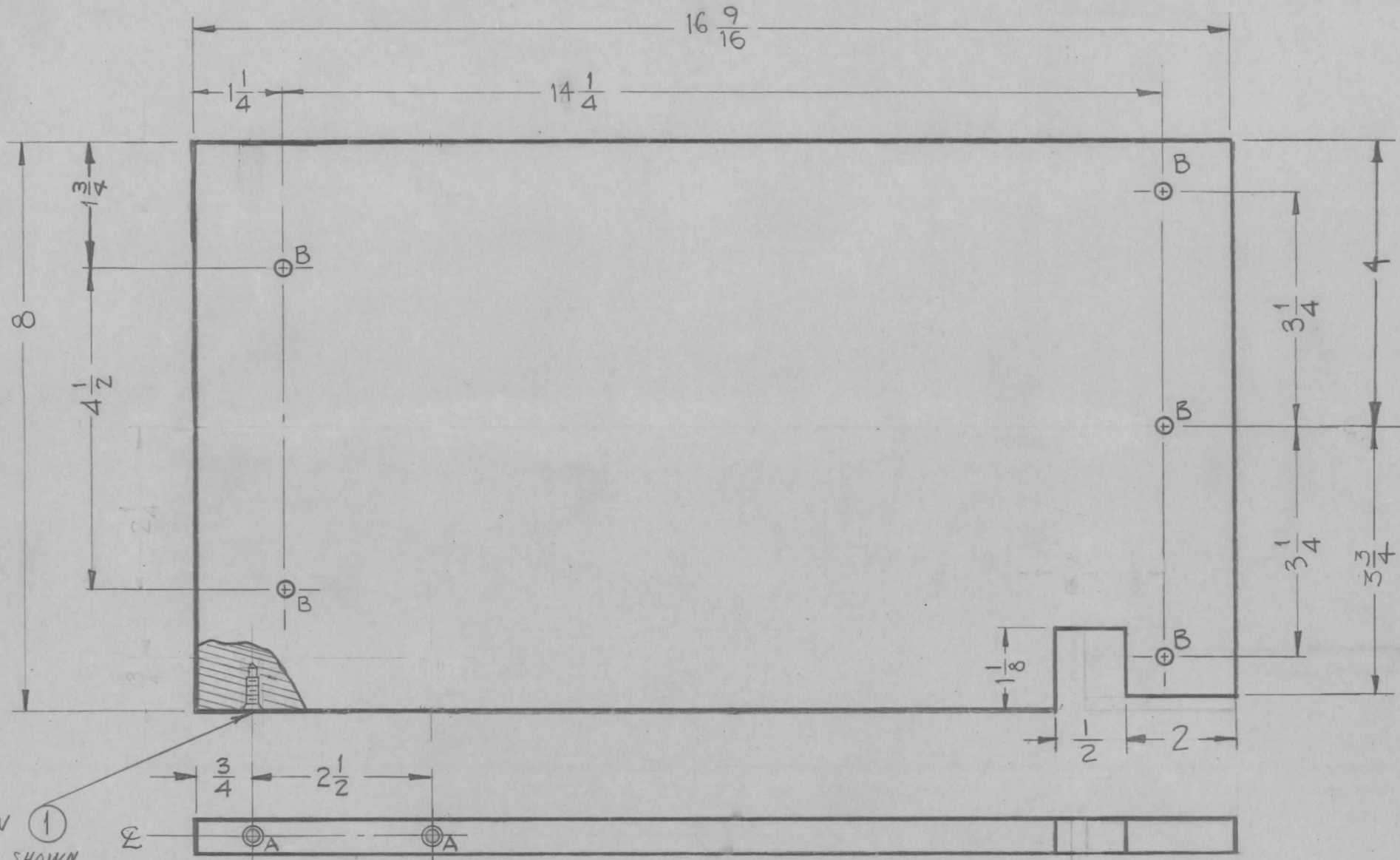


PX 503



- HOLE LEGEND**
- A ~ HOLES TO BE MACHINED AS FOLLOWS 2-REQ
 - 1- 13/64 DRILL (.203) TO .562 DP
 - 2- 120° C'SINK, .22-.25 DIA.
 - 3- TAP .410 MIN. DEPTH, USE HELI COIL TAP #3 FPB
 - 4- MOUNT ITEM (1) 3/4 TO 1-1/2 PITCH BELOW SURFACE.
 - 5- BREAK OFF DRIVING TANG
 - B ~ 7/32 (.218) DIA 5-REQ.

MOUNT ITEM 1 IN ALL 'A' HOLES AS SHOWN AFTER FINISHING.

F	2 AND 2-1/4 DIM DELETED 1-3/4" 4 ADD. 3 3/4" RELO	8/23/65	14653	LVV	JCB	MM	
E	1/2 CUTOUT WAS 3/16 DIM TO 2 OF CUTOUT WAS 2 7/16	3-8-63	8472		YWB	WFB	
D	2 'A' HOLES WERE 10-32 TAP	8-10-62	7008	GS	WFB	LB	
C	1 ITEM 1 ADDED						
C	2 'A' HOLES WERE 10-24 TAP	7-29-61	4971	RU	JCB	RB	
C	1 'A' HOLES DELETED						
B	1 3 3/4 DIM. ADDED	4-4-60	1994	cus	WFB	RB	
A	1 MATERIAL WAS EPOXY	3-28-60	1956	WFB	WFB	LB	
ISSUE	ITEM	CHANGED FROM	DATE	CH. NO.	DRAFTS	CHECKER	ENG. APP.
TOLERANCES		SCALE: $\frac{1}{16}$					
DEC. DIM. \pm		MAXIMUM ALLOWABLE TOLERANCES HAVE BEEN DETERMINED AND ANY DEVIATIONS WILL BE CAUSE FOR REJECTION.					
FRAC. DIM. \pm 1/64		REMOVE ALL BURRS AND SHARP EDGES					
ANGULAR DIM. \pm							

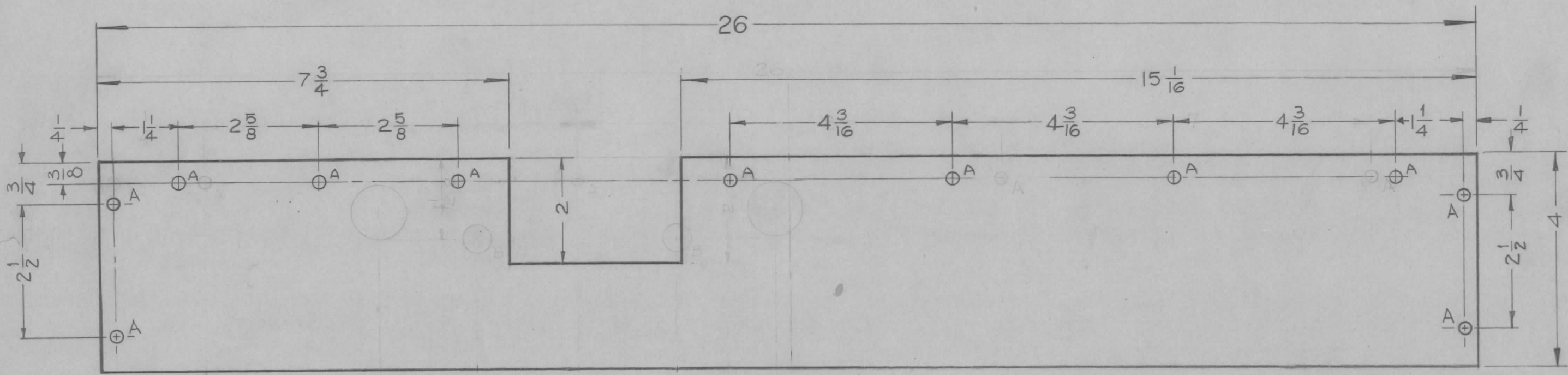
2	AX-209	GPT-40K		1-22-60
REQ. PER UNIT	MODEL	PROJECT NO.	ASS'Y. NO.	DATE
USED ON				

2	1	NT 139 SF1-20	INSERT, SCREW THREAD	
REQ. ITEM	PART NO.		DESCRIPTION	SYMBOL
1/2 THK.		THE TECHNICAL MATERIEL CORP.		
STOCK SIZE		MAMARONECK, NEW YORK		
SILICONE GLASS		SUPPORT, CAPACITOR, SIDE		
MATERIAL				
G7		DR. M...	WFB	RB
TYPE & TEMPER		HEAT TREAT. SPEC.	DRAWN	CHECKED
			WFB	RB
FINISH & SPEC. NO.		ELEC. DES. APP.	MECH. DES. APP.	PX 503 E

PX-504D

HOLES
A ~ 13/64 (.203) DIA.
B ~ 1/16 DIA.

REQ.
11
2



LD-979 2-28 Mc
LD-872 (2) for Spare Parts only

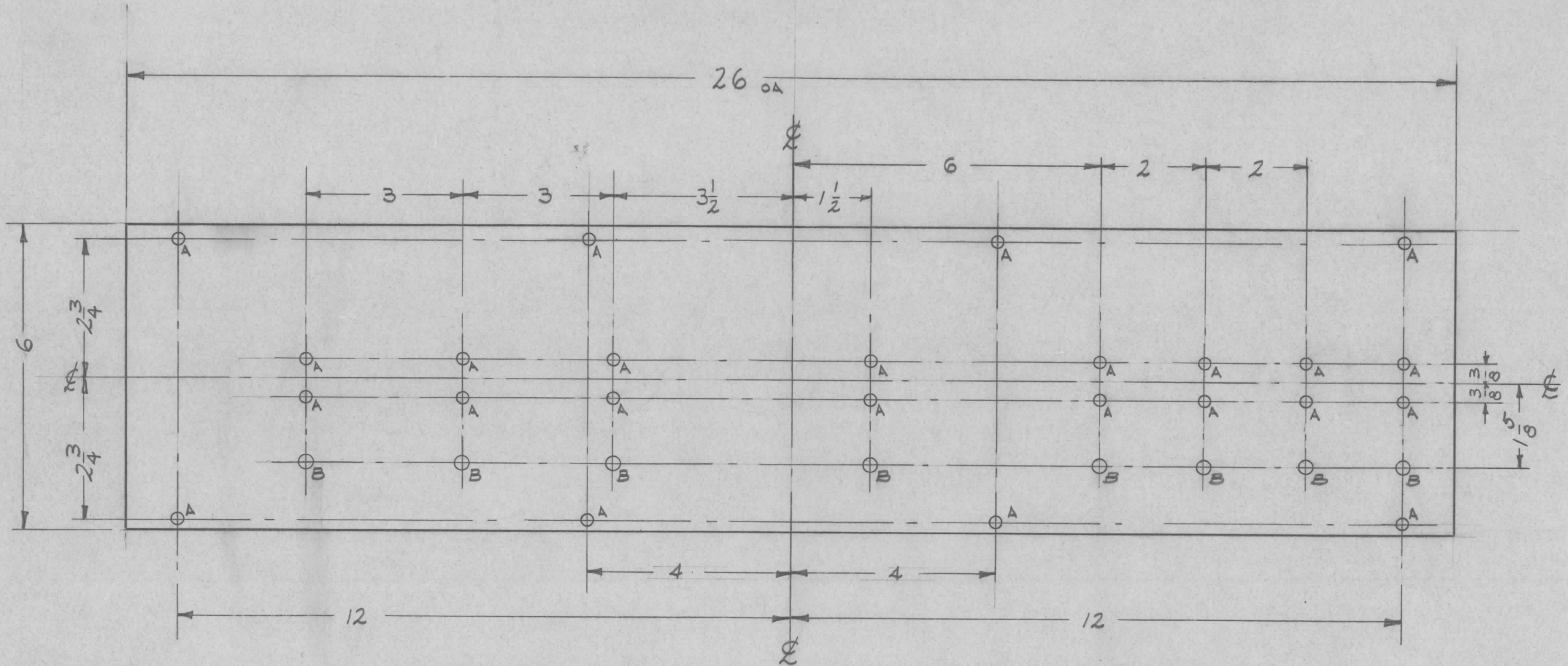
REF ~ TMC DWG NO. LD-791 (2) for Spare Parts Only

D	2	for Spare Parts Only Note Added to LD-791 (2)	1/28/60	3602	DM	JCB	QB
	1	LD-872 REF ADDED					
C	3	2" X 3-3/16 CUTOUT	6	25	Cy	file	QB
	2	(3) "A" HOLES ADDED	24	32			
	1	(2) "B" HOLES DELETED	60				
B		ADD TWO "B" HOLES	4-4-60	1993	Cy	file	QB
A	2	QUAN WAS 2 PER UNIT	3-29-60	1961	WJ	file	QB
	1	MAT WAS EPOXY					

ISSUE	ITEM	CHANGED FROM	DATE	CH. NO.	DRAFTS	CHECKER	ENG. APP.
TOLERANCES			SCALE: 1/2" = 1"				
DEC. DIM. ±			MAXIMUM ALLOWABLE TOLERANCES HAVE BEEN DETERMINED AND ANY DEVIATIONS WILL BE CAUSE FOR REJECTION. REMOVE ALL BURRS AND SHARP EDGES				
FRAC. DIM. ±							
ANGULAR DIM. ±							

1	AX-209	GPT-40K	1-23-60
REQ. PER UNIT	MODEL	PROJECT NO.	DATE
		ASS'Y. NO.	
		USED ON	

REQ. ITEM	PART NO.	DESCRIPTION	SYMBOL
	1/4" THK.	THE TECHNICAL MATERIEL CORP.	
	STOCK SIZE	MAMARONECK, NEW YORK	
	SILICONE GLASS	SUPPORT, CAPACITOR	
	MATERIAL	FRONT	
G7		DR M	QB
TYPE & TEMPER	HEAT TREAT. SPEC.	DRAWN	CHECKED
		QB	YLR
FINISH & SPEC. NO.	ELEC. DES. APP.	MECH. DES. APP.	PX-504 D



FRONT VIEW SHOWN

A - 7/32 (.218) D. 24 REQ'D,
 B - 1/4 (.250) D. 8 "

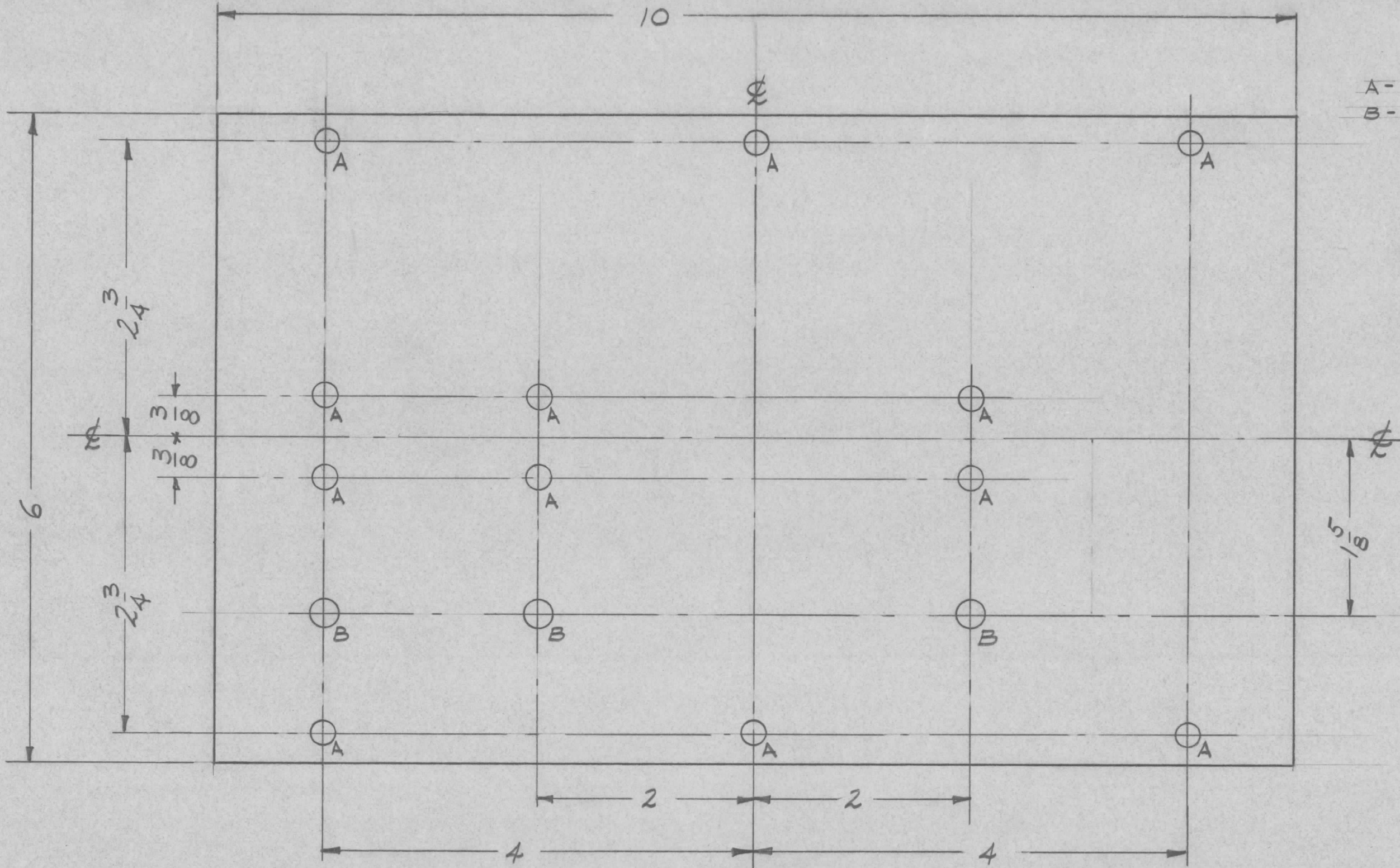
REF - TMC DWG. NO - LD-796 (2)

ISSUE ITEM	CHANGED FROM	DATE	CH. NO.	DRAFTS	CHECKER	ENG. APP.
TOLERANCES		SCALE: 1/2				
DEC. DIM. ±		MAXIMUM ALLOWABLE TOLERANCES HAVE BEEN DETERMINED AND ANY DEVIATIONS WILL BE CAUSE FOR REJECTION. REMOVE ALL BURRS AND SHARP EDGES				
FRAC. DIM. ±						
DEC. DIM. ±						

1	AP-103	GPT-40 K	A-1822	2-3-60
REQ. PER UNIT	MODEL	PROJECT NO.	ASS'Y. NO.	DATE
USED ON				

REQ. ITEM	PART NO.	DESCRIPTION	SYMBOL
1/2 TH'K STOCK SIZE		THE TECHNICAL MATERIEL CORP. MAMARONECK. NEW YORK	
PHENOLIC MATERIAL		BOARD, H.V. CONTACTS (HVR MATING)	
XXX P LAMINATE			
TYPE & TEMPER	HEAT TREAT. SPEC.	DRAWN	CHECKED
NATURAL		<i>[Signature]</i>	<i>[Signature]</i>
FINISH & SPEC. NO.	ELEC. DES. APP.	MECH. DES. APP.	PX-508

PX-509



A - 7/32 (.218) D. 12 REQD
 B - 1/4 (.250) D. 3 "

FRONT VIEW SHOWN

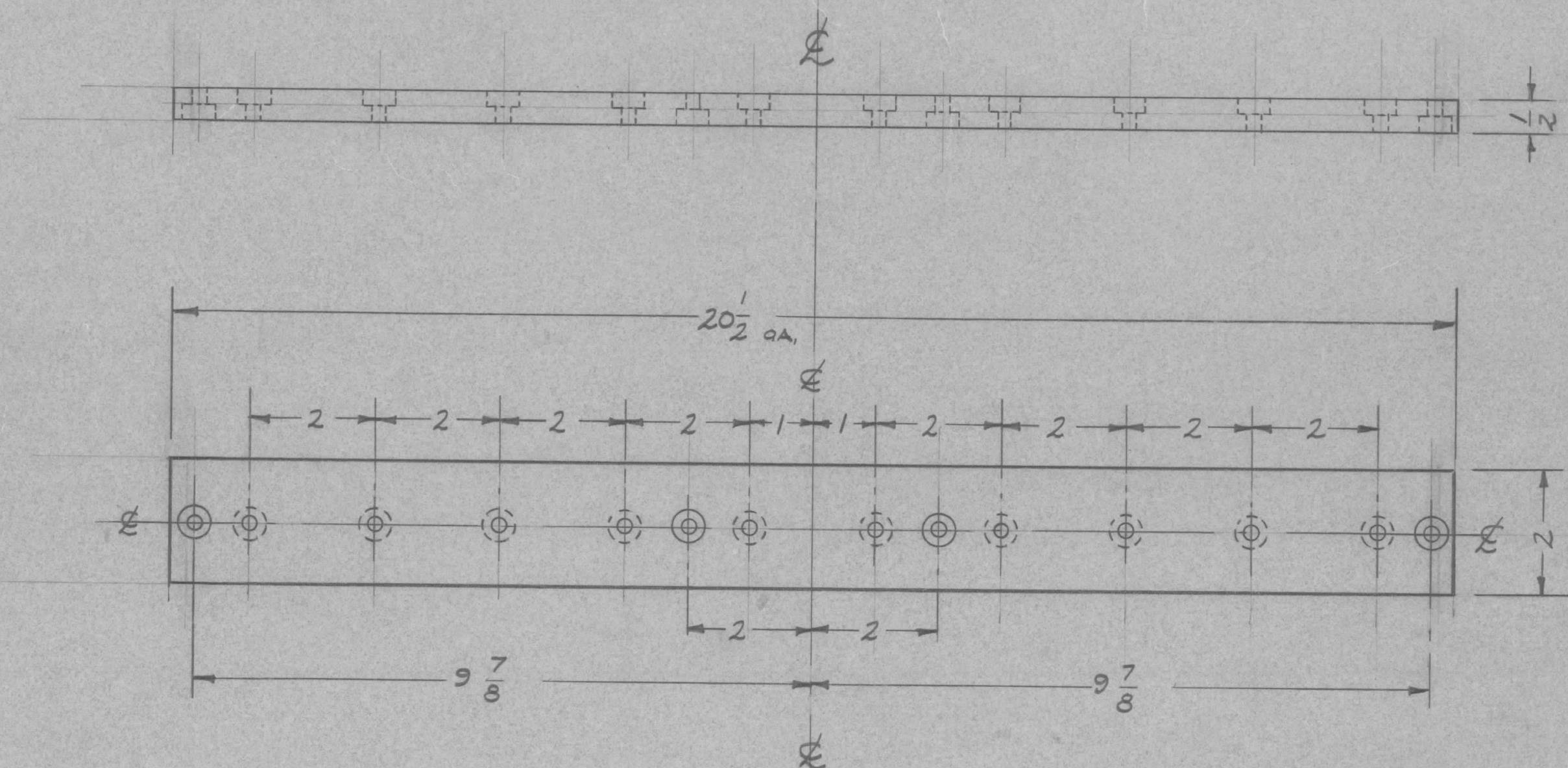
REF - TMC DWG NO. LD-797 (2)

ISSUE	ITEM	CHANGED FROM	DATE	CH. NO.	DRAFTS	CHECKER	ENG. APP.
TOLERANCES		SCALE: FULL					
DEC. DIM. ±		MAXIMUM ALLOWABLE TOLERANCES HAVE BEEN DETERMINED AND ANY DEVIATIONS WILL BE CAUSE FOR REJECTION.					
FRAC. DIM. ±		REMOVE ALL BURRS AND SHARP EDGES					
ANGULAR DIM. ±		1/64					

1	AP-103	GPT-40K	A-1822	2-3-60
REQ. PER UNIT	MODEL	PROJECT NO.	ASS'Y. NO.	DATE
USED ON				

REQ. ITEM	PART NO.	DESCRIPTION	SYMBOL
1/2 TH'K		THE TECHNICAL MATERIEL CORP. MAMARONECK, NEW YORK	DB
STOCK SIZE			
PHENOLIC		BOARD, H.V. CONTACTS, SMALL (CROWBAR MATING)	DB
MATERIAL			
XXX P LAMINATE		JORILLO	JORILLO
TYPE & TEMPER	HEAT TREAT. SPEC.	DRAWN	CHECKED
NATURAL		arc	PX-509
FINISH & SPEC. NO.		ELEC. DES. APP.	MECH. DES. APP.

PX-510



NOTICE TO PERSONS RECEIVING THIS DRAWING

THE TECHNICAL MATERIEL CORPORATION claims proprietary right in the material disclosed hereon. This drawing is issued in confidence for engineering information only and may not be reproduced or used to manufacture anything shown hereon without permission from THE TECHNICAL MATERIEL CORPORATION to the user. This drawing is loaned for mutual assistance and is subject to recall at any time.

Property of:
THE TECHNICAL MATERIEL CORPORATION
MAMARONECK, NEW YORK

A-7/32 (.218) D THRU- C'BORE 1/2 D X 1/4 DEEP - 14 REQ'D.
(ALL HOLES)

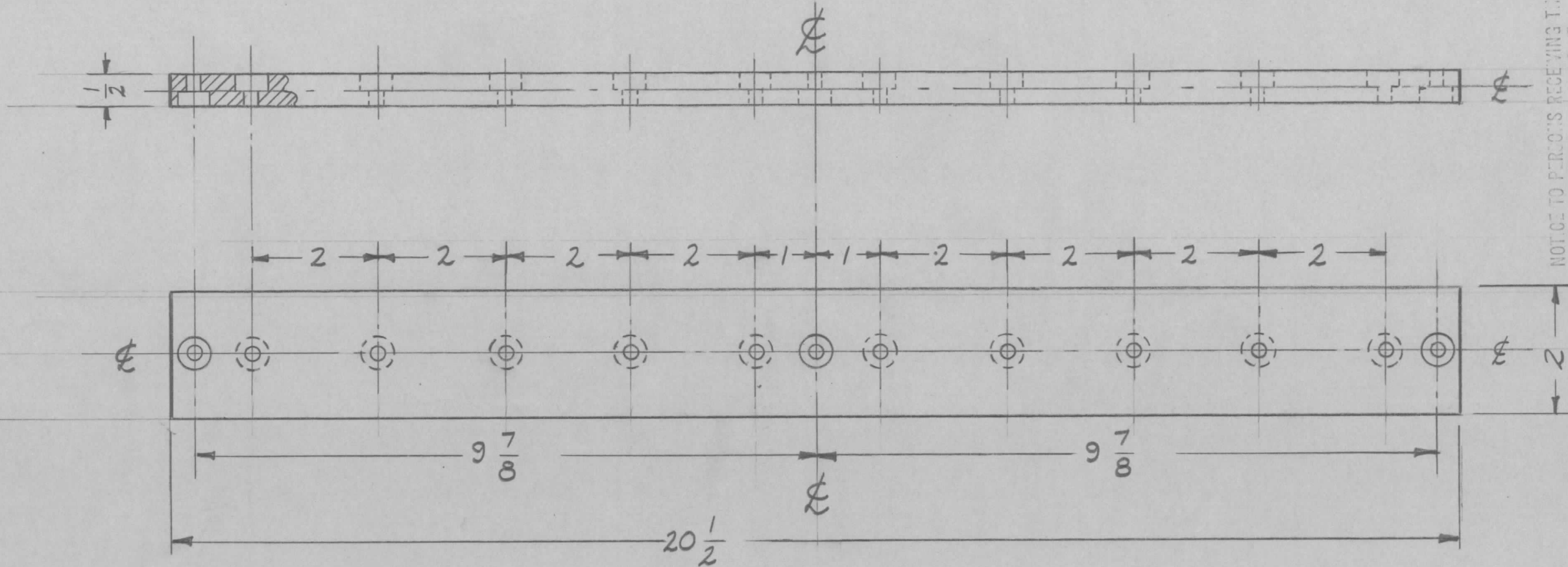
REF - TMC DWG NO. LD-798 (2)

ISSUE	ITEM	CHANGED FROM	DATE	CH. NO.	DRAFTS	CHECKER	ENG. APP.
TOLERANCES			SCALE: 1/2 scale				
DEC. DIM. ±			MAXIMUM ALLOWABLE TOLERANCES HAVE BEEN DETERMINED AND ANY DEVIATIONS WILL BE CAUSE FOR REJECTION; REMOVE ALL BURRS AND SHARP EDGES				
FRAC. DIM. ±							
ANGULAR DIM. ±							

1	AP-103	GPT-40K	A-1822	2-3-60
REQ. PER UNIT	MODEL	PROJECT NO.	ASSY. NO.	DATE
USED ON				

REQ.	ITEM	PART NO.	DESCRIPTION		SYMBOL
		1/2 TH'K.	THE TECHNICAL MATERIEL CORP.		
		STOCK SIZE	MAMARONECK, NEW YORK		
		PHENOLIC	BOARD, RESISTOR CLIP MTG.,		
		MATERIAL	TOP		
		XXXXP LAMINATE	TOBILLO 2-2-60	file	DB
		TYPE & TEMPER	DRAWN	CHECKED	FINAL APPROVAL
		NATURAL	file	file	PX-510
		FINISH & SPEC. NO.	ELEC. DES. APP	MECH. DES. APP	

PX-511



A-7/32 (.218)D. THRU, C'BORE 1/2^{D.} X 1/4 DEEP-13 REQ'D.

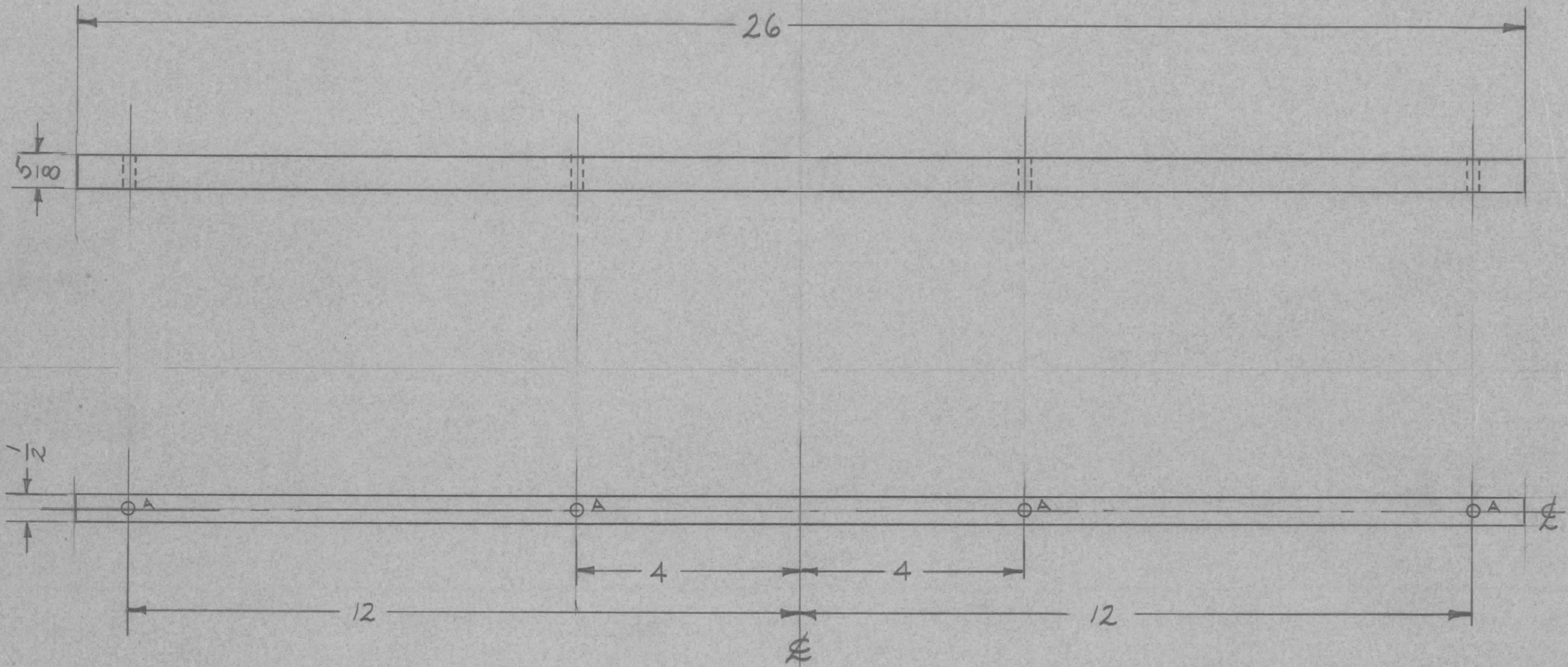
Property of:
 THE TECHNICAL MATERIEL CORPORATION
 MAMARONECK, NEW YORK

ISSUE	ITEM	CHANGED FROM	DATE	CH. NO.	DRAFTS	CHECKER	ENG. APP.
TOLERANCES		SCALE: 1/2					
DIM. ±		MAXIMUM ALLOWABLE TOLERANCES HAVE BEEN DETERMINED AND ANY DEVIATIONS WILL BE CAUSE FOR REJECTION.					
C. DIM. ±		REMOVE ALL BURRS AND SHARP EDGES					
ULAR DIM. ±		1/64					

REQ. PER UNIT	MODEL	PROJECT NO.	ASS'Y. NO.	DATE
1	AP-103	GPT-40 K	A-1822	2-4-60
USED ON				

REQ. ITEM	PART NO.	DESCRIPTION	SYMBOL
1/2 TH'K.		THE TECHNICAL MATERIEL CORP.	
STOCK SIZE		MAMARONECK, NEW YORK	
PHENOLIC		BOARD, RESISTOR CLIP MTG.,	
MATERIAL		BOTTOM	
XXXXP LAMINATE			
TYPE & TEMPER	HEAT TREAT. SPEC.	DRAWN	CHECKED
NATURAL		<i>[Signature]</i>	<i>[Signature]</i>
FINISH & SPEC. NO.	ELEC. DES. APP.	MECH. DES. APP.	PX-511

PX-513



A-7/32 (.218) D. 4-REQ'D.

ISSUE	ITEM	CHANGED FROM	DATE	CH. NO.	DRAFTS	CHECKER	ENG. APP.
TOLERANCES			SCALE: 1/2				
DEC. DIM. ±			MAXIMUM ALLOWABLE TOLERANCES HAVE BEEN DETERMINED AND ANY DEVIATIONS WILL BE CAUSE FOR REJECTION: REMOVE ALL BURRS AND SHARP EDGES				
FRAC. DIM. ±							
ANGULAR DIM. ±							

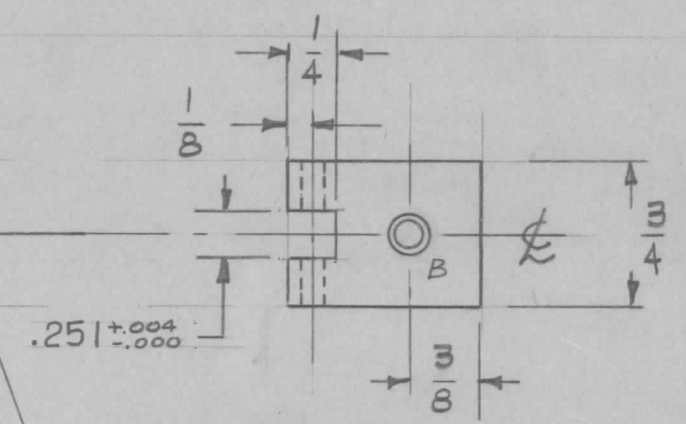
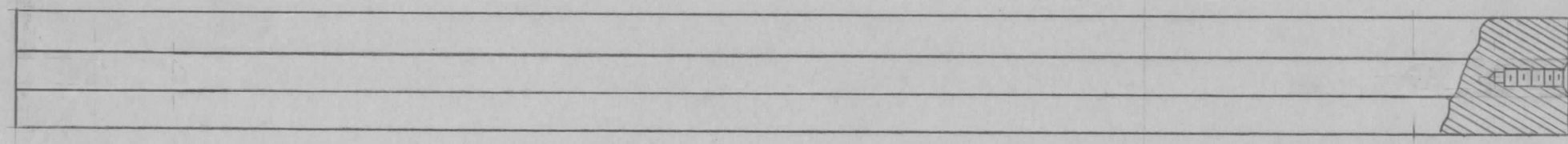
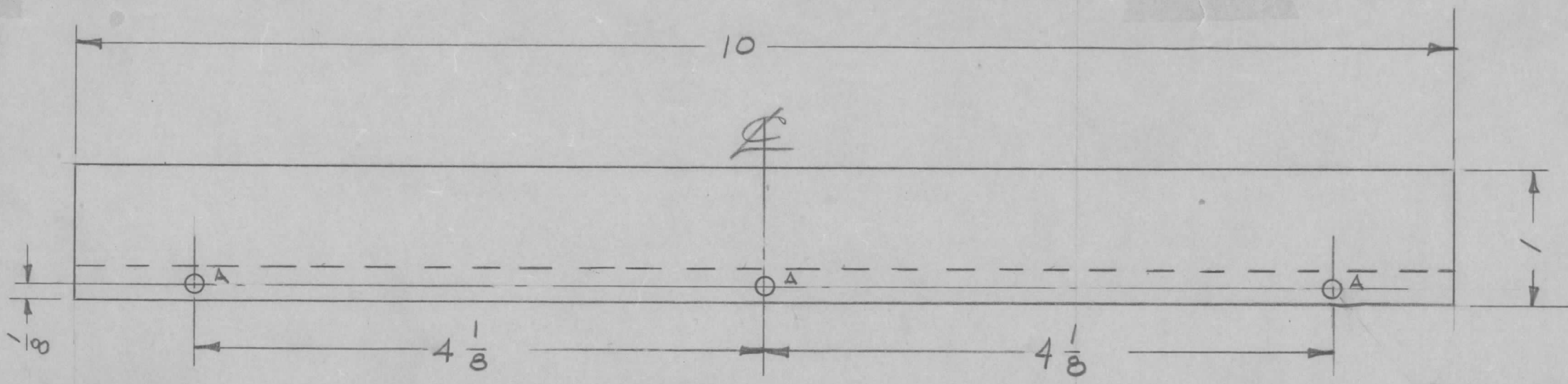
2	AP-103	GPT-40K	A-1B22	2-3-60
REQ. PER UNIT	MODEL	PROJECT NO.	ASSY. NO.	DATE
USED ON				

REQ.	ITEM	PART NO.	DESCRIPTION		SYMBOL
		1/2 TH'K.	THE TECHNICAL MATERIEL CORP.		
		STOCK SIZE	MAMARONECK, NEW YORK		
		PHENOLIC	SUPPORT, H.V. CONTACT		
		MATERIAL	BOARD		
		XXXXP LAMINATE	TOBILLO	JQ	DB
		NATURAL	DRAWN	CHECKED	FINAL APPROVAL
		FINISH & SPEC. NO.	ELEC. DES. APP	MECH. DES. APP	PX-513

PX-519 C

NOTES:

- A — .065 DIA. (FOR 3-REQ.)
- B — HOLES TO BE MACHINED AS FOLLOWS: 2 REQ.
 - 1- #16 DRILL (.174) TO .500 DP.
 - 2- 120° C'SINK, .20-.23 DIA.
 - 3- TAP. 360 MIN. DEPTH, USE HELI COIL TAP #2 CPA.
 - 4- MOUNT ITEM ① 3/4 TO 1-1/2 PITCH BELOW SURFACE
 - 5 BREAK OFF DRIVING TANG.



OPPOSITE END SAME

MOUNT ITEM 1 IN ALL "B" HOLES AS SHOWN AFTER FINISHING

A - (SEE 2) ...
B - DRILL #16 FOR #2 CPA TAP

ISSUE	ITEM	CHANGED FROM	DATE	CH. NO.	DRAFTS	CHECKER	ENG. APP.
C	1	.251 ± .004 WAS 1/4	7-12-63	9535	A.K.	J.P.	J.P.
B	2	ITEM 1 ADDED	8-9-62	6799	G.S.	J.W.	J.W.
A	1	MAT. WAS EPOXY	3-17-60	#	P.S.	J.W.	J.W.

TOLERANCES SCALE: FULL

DEC. DIM. ±
FRAC. DIM. ± 1/64
ANGULAR DIM. ±

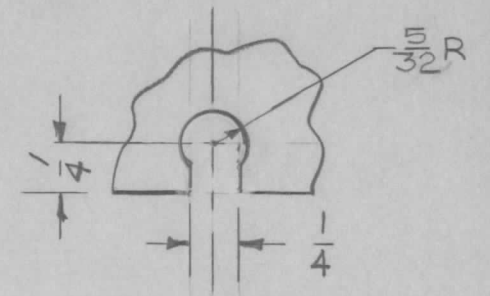
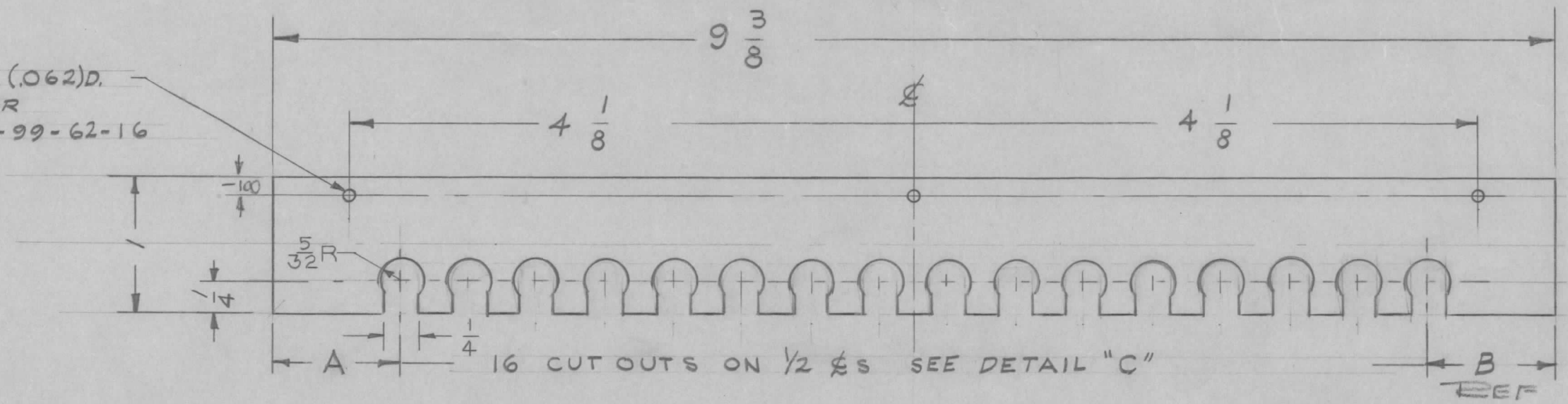
MAXIMUM ALLOWABLE TOLERANCES HAVE BEEN DETERMINED AND ANY DEVIATIONS WILL BE CAUSE FOR REJECTION. REMOVE ALL BURRS AND SHARP EDGES

4	GPT-40K	AT-101	2-17-60
REQ. PER UNIT	MODEL	PROJECT NO.	ASS'Y. NO.
USED ON			

2	1	NT-139-SC08-20	INSERT, SCREW THREAD
REQ. ITEM	PART NO.		DESCRIPTION
3/4 x 1			THE TECHNICAL MATERIEL CORP.
STOCK SIZE			MAMARONECK. NEW YORK
SUPRA MICA 500			SUPPORT, COIL
MATERIAL			ANT. TUNER
TYPE & TEMPER		HEAT TREAT. SPEC.	DRAWN
FINISH & SPEC. NO.		ELEC. DES. APP.	MECH. DES. APP.
J.P.			J.W.
J.P.			J.W.
PX-519			C

PX-520 A

3 HOLES (.062)D.
FOR
PIN - PN-99-62-16



DETAIL "C"
16 REQ. ON 1/2 £'S.

TMC PART No.	DIM A	DIM B REF.
PX-520-1	15/16	15/16
PX-520-2	1 1/16	13/16
PX-520-3	1 3/16	11/16
PX-520-4	1 5/16	9/16

ISSUE	ITEM	CHANGED FROM	DATE	CH. NO.	DRAFTS	CHECKER	ENG. APP.
A	1	ADD 5/32R & 1/4 ON "C" DETAIL	3/30/60			<i>CS</i>	<i>John</i>

TOLERANCES

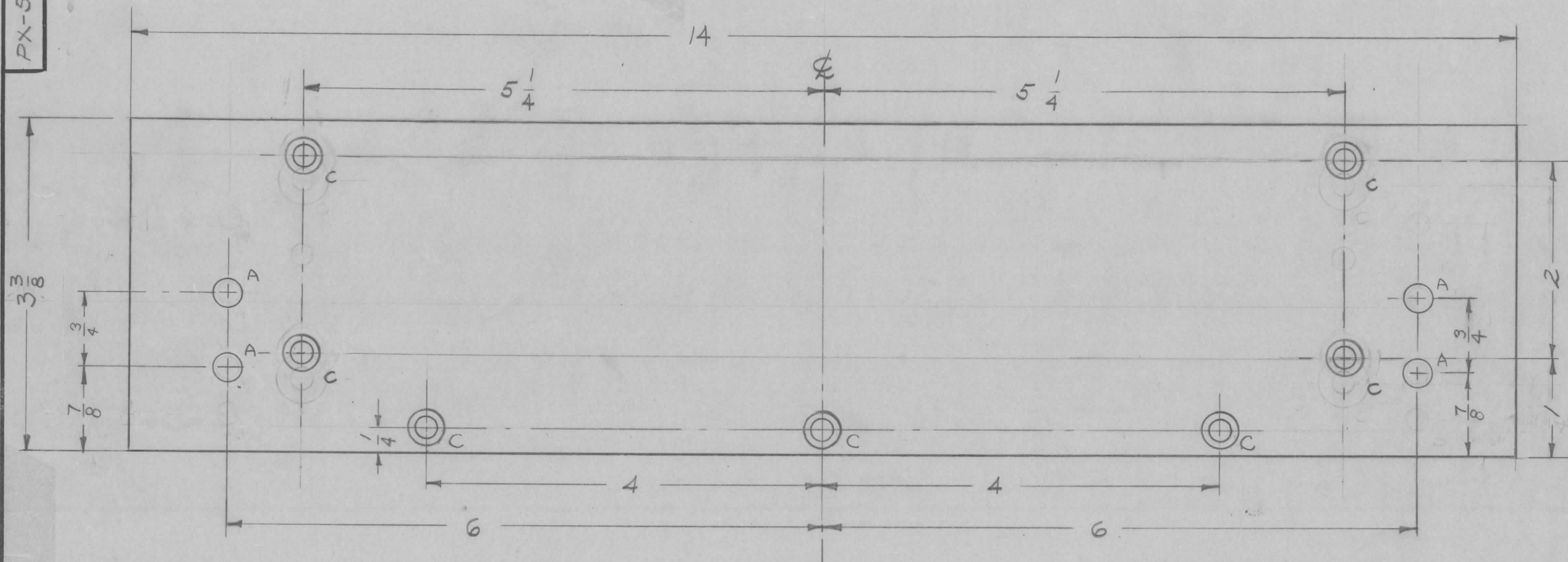
SCALE:

DEC. DIM. ±
FRAC. DIM. ±
ANGULAR DIM. ±

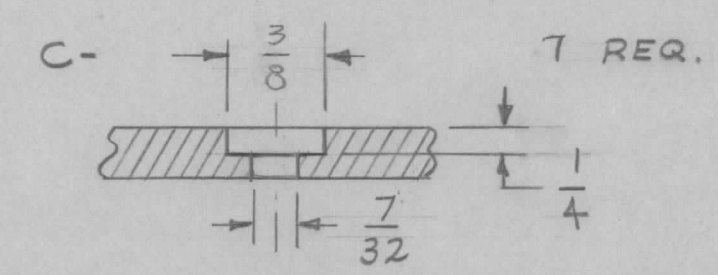
MAXIMUM ALLOWABLE TOLERANCES HAVE BEEN DETERMINED AND ANY DEVIATIONS WILL BE CAUSE FOR REJECTION.
REMOVE ALL BURRS AND SHARP EDGES

1 EACH	GPT-40K	AT-101		2-17-60
REQ. PER UNIT	MODEL	PROJECT NO.	ASS'Y. NO.	DATE
USED ON				

REQ. ITEM	PART NO.	DESCRIPTION	SYMBOL
1/4"		THE TECHNICAL MATERIEL CORP. MAMARONECK. NEW YORK	
STOCK SIZE		INSERT, COIL SUPPORT	
TEFLON		COIL ANT. TUNER	
MATERIAL			
		<i>Torillo</i>	<i>MR</i>
		<i>MR</i>	<i>JR</i>
		DRAWN	CHECKED
			FINAL APPROVAL
			PX-520 A
		FINISH & SPEC. NO.	ELEC. DES. APP. MECH. DES. APP.



A $\frac{9}{32}$ DIA. 4 REQ.



REF~ TMC DWG NO. LD-807(2)

ISSUE	ITEM	CHANGED FROM	DATE	CH. NO.	DRAFTS	CHECKER	ENG. APP.
D	1	"A" HOLES REPLACE "B" HOLES	1-22-60	2625	WJ	JW	DB
C	1	SUPRA - MICA - 500 WAS - EPOXY	3-17-60	~	WJ	JW	DB
B	2	TWO "B" HOLES ADDED	3-14-60	~	WJ	JW	DB
B	1	TWO "A" HOLES DELETED					
A	2	9/32 HOLE WAS 7/32	3/11/60	~	WJ	JW	DB
A	1	"C" HOLE WAS 1/2" C BORE					

TOLERANCES
 DEC. DIM. \pm
 FRAC. DIM. \pm
 ANGULAR DIM. \pm

SCALE:
 MAXIMUM ALLOWABLE TOLERANCES HAVE BEEN DETERMINED AND ANY DEVIATIONS WILL BE CAUSE FOR REJECTION.
 REMOVE ALL BURRS AND SHARP EDGES

1	GPT-40K	AT-101		2-17-60
REQ. PER UNIT	MODEL	PROJECT NO.	ASS'Y. NO.	DATE
USED ON				

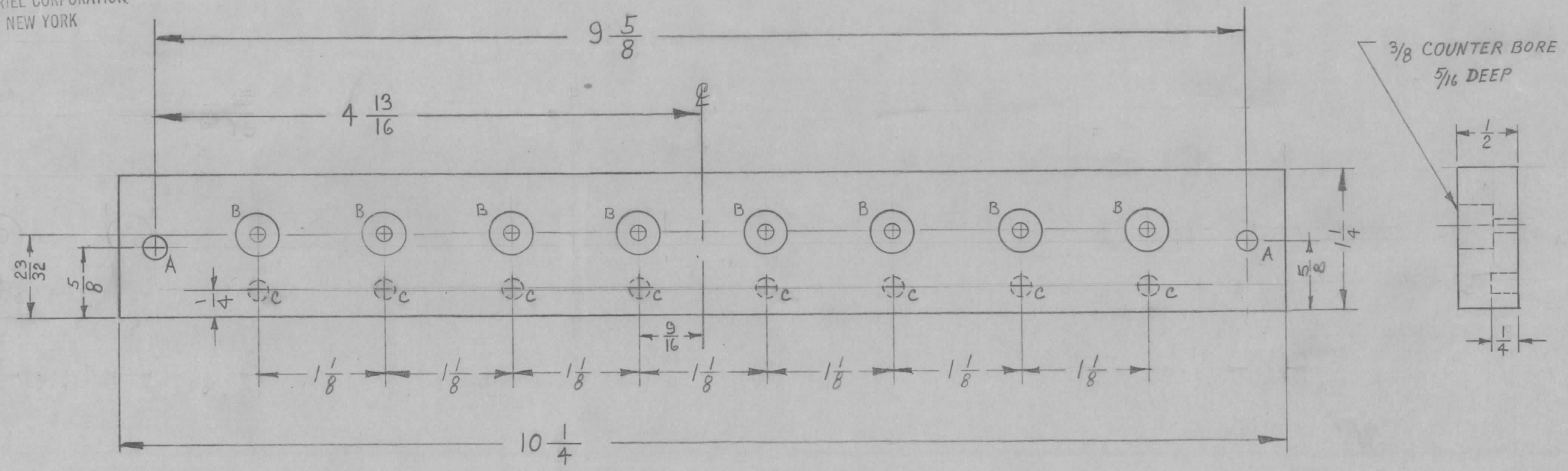
REQ. ITEM	PART NO.	DESCRIPTION	SYMBOL						
	1/2	THE TECHNICAL MATERIEL CORP. MAMARONECK. NEW YORK							
	STOCK SIZE								
	SUPRA MICA 500	BOARD, CONTACT SUPPORT ANT. TUNER							
	MATERIAL								
		<table border="1"> <tr> <td>DRAWN</td> <td>CHECKED</td> <td>FINAL APPROVAL</td> </tr> <tr> <td></td> <td></td> <td></td> </tr> </table>	DRAWN	CHECKED	FINAL APPROVAL				
DRAWN	CHECKED	FINAL APPROVAL							
		ELEC. DES. APP. MECH. DES. APP.	PX-521 D						

PX-527 A

NOTICE TO PERSONS RECEIVING THIS DRAWING

THE TECHNICAL MATERIEL CORPORATION claims proprietary right in the material disclosed hereon. This drawing is issued in confidence for engineering information only and may not be reproduced or used to manufacture anything shown hereon without permission from THE TECHNICAL MATERIEL CORPORATION to the user. This drawing is loaned for mutual assistance and is subject to recall at any time.

Property of:
THE TECHNICAL MATERIEL CORPORATION
MAMARONECK, NEW YORK



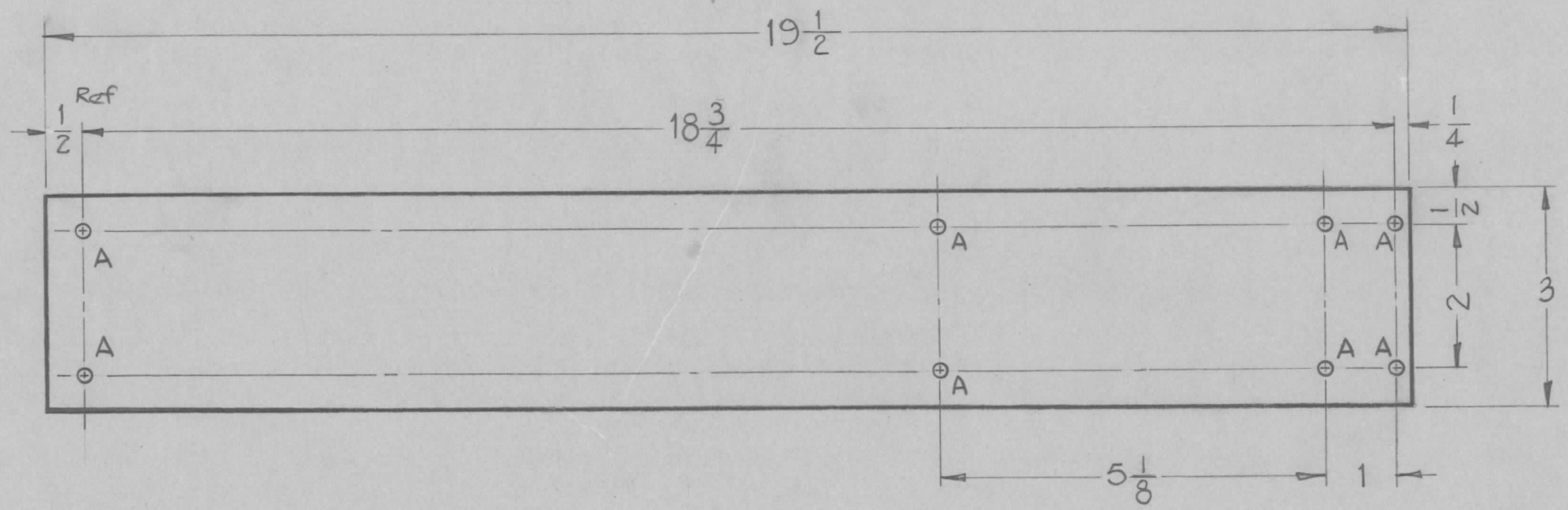
A ~ 13/64 D. 2 REQ.
B ~ 11/64 D. THRU, C' BORE 3/8 D. x 5/16 DP. 8 REQ.
C ~ 11/64 D. x 1/4 DP. 8 REQ.

A	1	DIM. COMPLETELY REVISED	3-3-60	~	MF	Hwe	DB
ISSUE	ITEM	CHANGED FROM	DATE	CH. NO.	DRAFTS	CHECKER	ENG. APP.
TOLERANCES		SCALE: FULL					
DEC. DIM. ±		MAXIMUM ALLOWABLE TOLERANCES HAVE BEEN DETERMINED AND ANY DEVIATIONS WILL BE CAUSE FOR REJECTION.					
FRAC. DIM. ± 1/64		REMOVE ALL BURRS AND SHARP EDGES					
ANGULAR DIM. ±							

2	GPT-4DK	AP-102		2-17-60
REQ. PER UNIT	MODEL	PROJECT NO.	ASS'Y. NO.	DATE
USED ON				

REQ. ITEM	PART NO.	DESCRIPTION		SYMBOL
	1/2 THK.	THE TECHNICAL MATERIEL CORP.		
	STOCK SIZE	MAMARONECK, NEW YORK		
	PHENOLIC	BOARD, TERMINAL		
	MATERIAL	INTERCONNECT FILTER		
XXXXP		MF	Hwe	DB
TYPE & TEMPER	HEAT TREAT. SPEC.	DRAWN	CHECKED	FINAL APPROVAL
		EM		
FINISH & SPEC. NO.	ELEC. DES. APP.	MECH. DES. APP.	PX-527	A

HOLES
A - $\frac{13}{64}$ DIA.
REQ'D.
8

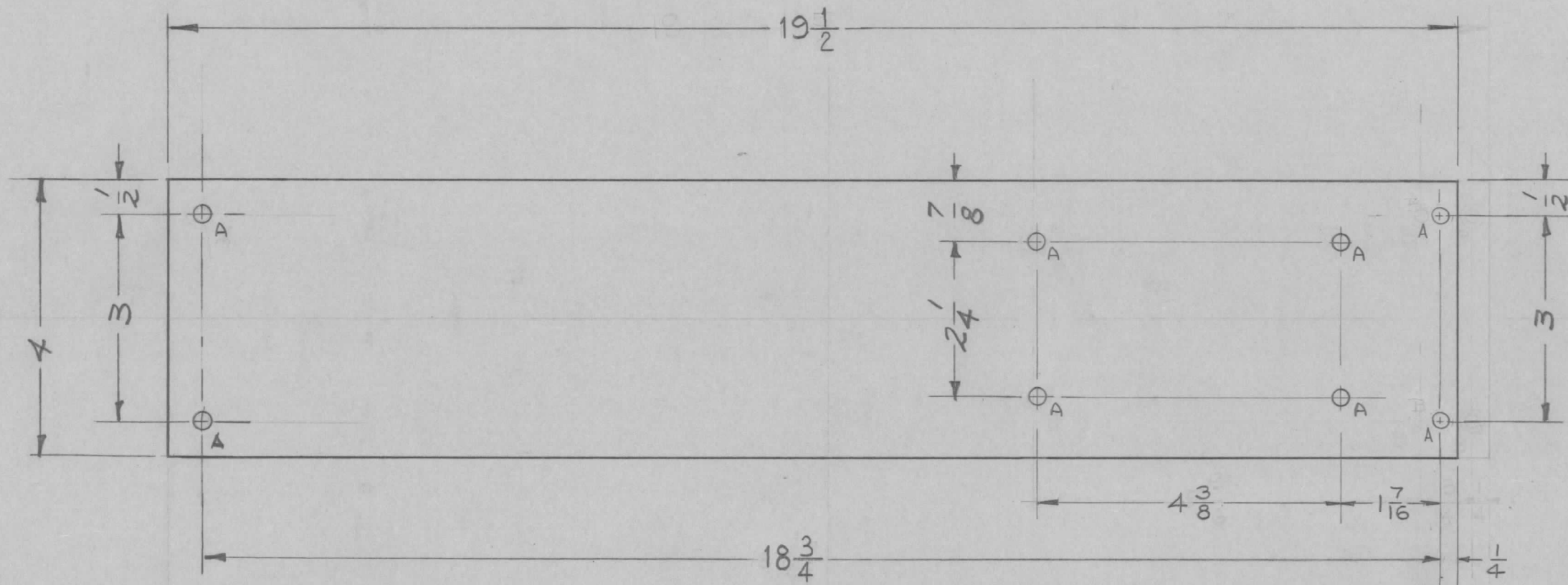


C	2	18 3/4 DIM WAS 17 7/8	3-24-61	4513	MAF	JCB	DB
	1	19 1/2 DIM WAS 18 5/8					
	3	8 'A' HOLES $\frac{13}{64}$ WERE $\frac{3}{16}$					
B	2	17 7/8 WAS 18 1/4	8-9-60	2735	RU	JCB	WR
	1	18 5/8 WAS 19"					
A	1	DIM 5 1/8 WAS 5 3/8	4-13-60	2132	MAF	JCB	DB
ISSUE	ITEM	CHANGED FROM	DATE	CH. NO.	DRAFTS	CHECKER	ENG. APP.
TOLERANCES			SCALE: DO NOT SCALE				
DEC. DIM. \pm			MAXIMUM ALLOWABLE TOLERANCES HAVE BEEN DETERMINED AND ANY DEVIATIONS WILL BE CAUSE FOR REJECTION.				
FRAC. DIM. \pm			REMOVE ALL BURRS AND SHARP EDGES				
ANGULAR DIM. \pm							

REF ~ TMC DWG. NO. LD-829(1)

REQ. ITEM	PART NO.	DESCRIPTION	SYMBOL
	1/4	THE TECHNICAL MATERIEL CORP. MAMARONECK, NEW YORK	
	STOCK SIZE	BRACE, FRONT	
	SILICONE GLASS	LOAD RESISTOR	
	MATERIAL		
67		DA Man	JCB
TYPE & TEMPER	HEAT TREAT. SPEC.	DRAWN	CHECKED
FINISH & SPEC. NO.	ELEC. DES. APP.	MECH. DES. APP.	PX-536 C

Z	GPT-40K	MOD KIT - 10K	3-17-60
REQ. PER UNIT	MODEL	PROJECT NO.	ASS'Y. NO.
			DATE
USED ON			



NOTICE TO PERSONS RECEIVING THIS DRAWING
 THE TECHNICAL MATERIEL CORPORATION claims proprietary right in the information disclosed hereon. This drawing is issued in confidence for engineering information only and may be reproduced or used to manufacture anything shown hereon without permission from THE TECHNICAL MATERIEL CORPORATION to the user. This drawing is loaned for mutual assistance and is subject to recall at any time.

Property of:
 THE TECHNICAL MATERIEL CORPORATION
 MAMARONECK, NEW YORK

HOLES REQ.
 AN 13/64 DIA. 8

D	2	(2) "A" HOLES ADDED	11-28-62	7737	<i>[Signature]</i>	<i>[Signature]</i>	<i>[Signature]</i>
C	1	(2) "B" HOLES WERE CSK FOR 10-32	4-11-62	6602	<i>[Signature]</i>	<i>[Signature]</i>	<i>[Signature]</i>
B	2	.390 WAS .284 ON B DETAIL	3-24-61	4513	<i>[Signature]</i>	<i>[Signature]</i>	<i>[Signature]</i>
A	5	18 3/4 DIM WAS 17 7/8					
	1	19 1/2 DIM WAS 18 5/8					
	5	DIMENSIONS REVISED	8	2	<i>[Signature]</i>	<i>[Signature]</i>	<i>[Signature]</i>
	4	(2) "A" HOLES WERE 3/16D	14	4	<i>[Signature]</i>	<i>[Signature]</i>	<i>[Signature]</i>
	3	(6) "A" HOLES 13/64 DIA ADDED	60	6	<i>[Signature]</i>	<i>[Signature]</i>	<i>[Signature]</i>
	2	(6) "B" HOLES 10-32 CSK DELETE					
	1	(2) "B" HOLES 10-32 CSK ADDED					

ISSUE	ITEM	CHANGED FROM	DATE	CH. NO.	DRAFTS	CHECKER	ENG. APP.
TOLERANCES			SCALE: HALF				
DEC. DIM. ±			MAXIMUM ALLOWABLE TOLERANCES HAVE BEEN DETERMINED AND ANY DEVIATIONS WILL BE CAUSE FOR REJECTION.				
FRAC. DIM. ±			REMOVE ALL BURRS AND SHARP EDGES				
ANGULAR DIM. ±			1/64				

1	GPT-40K	MODE SWITCH	3-17-60
REQ. PER UNIT	MODEL	PROJECT NO.	ASS'Y. NO.
USED ON			

REQ. ITEM	PART NO.	DESCRIPTION	SYMBOL
	V/4	THE TECHNICAL MATERIEL CORP. MAMARONECK, NEW YORK	
	SILICONE GLASS	BRACE, CENTER LOAD RESISTOR MT'G.	
	G7	<i>[Signature]</i> <i>[Signature]</i> <i>[Signature]</i>	
TYPE & TEMPER	HEAT TREAT. SPEC.	DRAWN	CHECKED
FINISH & SPEC. NO.	ELEC. DES. APP.	MECH. DES. APP.	PX-543 D

PX-548 A

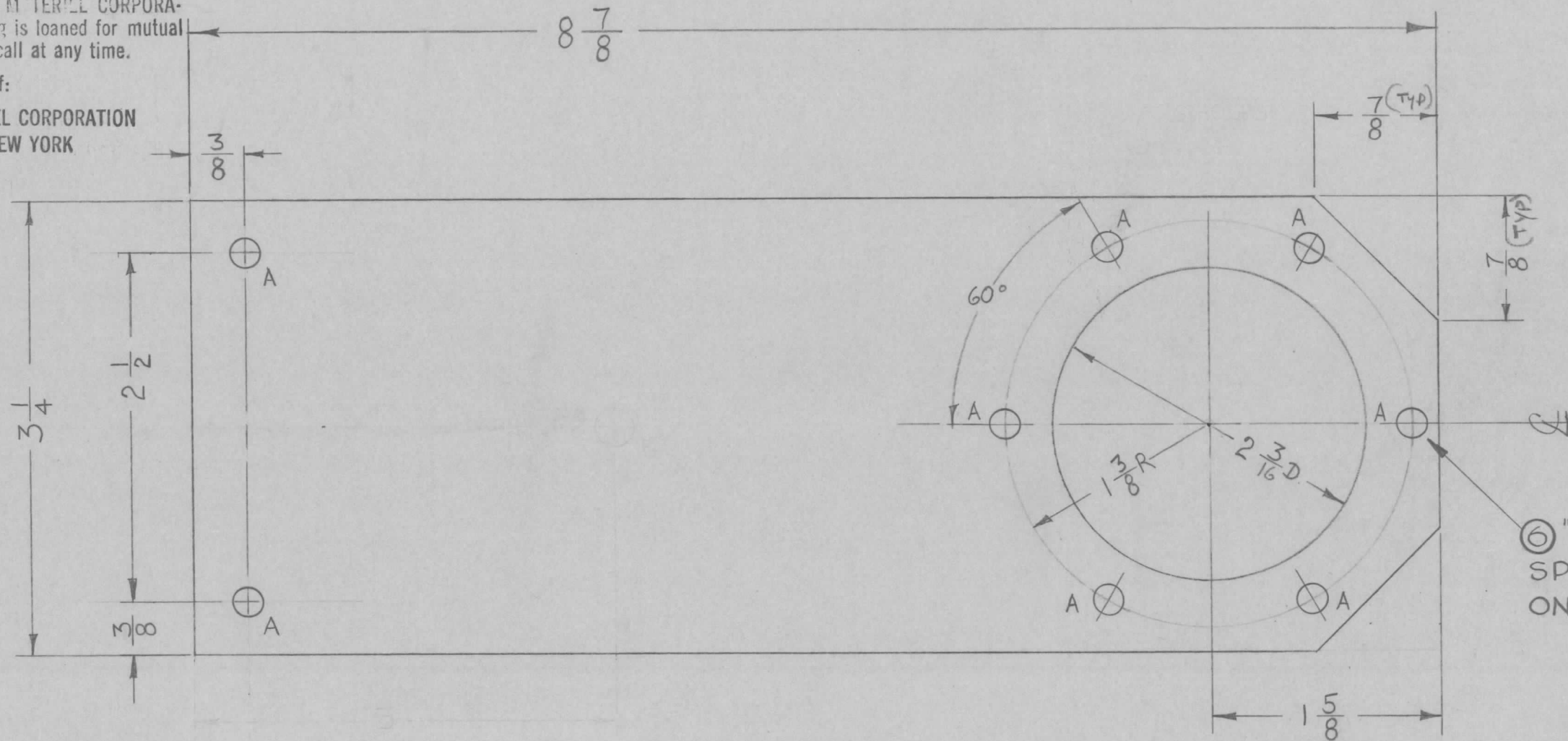
NOTICE TO PERSONS RECEIVING THIS DRAWING

THE TECHNICAL MATERIEL CORPORATION claims proprietary right in the material disclosed hereon. This drawing is issued in confidence for engineering information only and may not be reproduced or used to manufacture anything shown hereon without permission from THE TECHNICAL MATERIEL CORPORATION to the user. This drawing is loaned for mutual assistance and is subject to recall at any time.

Property of:
THE TECHNICAL MATERIEL CORPORATION
MAMARONECK, NEW YORK

A-13/64 (.203) D.

8 REQ



REF - TMC DWG NO. LD-806 (Z)

ISSUE	ITEM	CHANGED FROM	DATE	CH. NO.	DRAFTS	CHECKER	ENG. APP.
A	1	B" 1/64" DELETED	7-19-60	2602		file	AS

TOLERANCES: DEC. DIM. ±, FRAC. DIM. ± 1/64, ANGULAR DIM. ±

SCALE: MAXIMUM ALLOWABLE TOLERANCES HAVE BEEN DETERMINED AND ANY DEVIATIONS WILL BE CAUSE FOR REJECTION. REMOVE ALL BURRS AND SHARP EDGES

2	GPT-40K	AT-101		4-11-60
REQ. PER UNIT	MODEL	PROJECT NO.	ASS'Y. NO.	DATE

USED ON

REQ. ITEM	PART NO.	DESCRIPTION	SYMBOL
1/4		THE TECHNICAL MATERIEL CORP. MAMARONECK, NEW YORK	
		SUPPORT	
		FIXED CAPACITOR	
G7			
TYPE & TEMPER	HEAT TREAT. SPEC.	DRAWN	CHECKED
		FILE	AS
			FINAL APPROVAL
			PX-548 A
		ELEC. DES. APP.	MECH. DES. APP.

PX-589

NOTICE TO PERSONS RECEIVING THIS DRAWING

THE TECHNICAL MATERIEL CORPORATION claims proprietary right in the material disclosed hereon. This drawing is issued in confidence for engineering information only and may not be reproduced or used to manufacture anything shown hereon without permission from THE TECHNICAL MATERIEL CORPORATION to the user. This drawing is loaned for mutual assistance and is subject to recall at any time.

Property of:

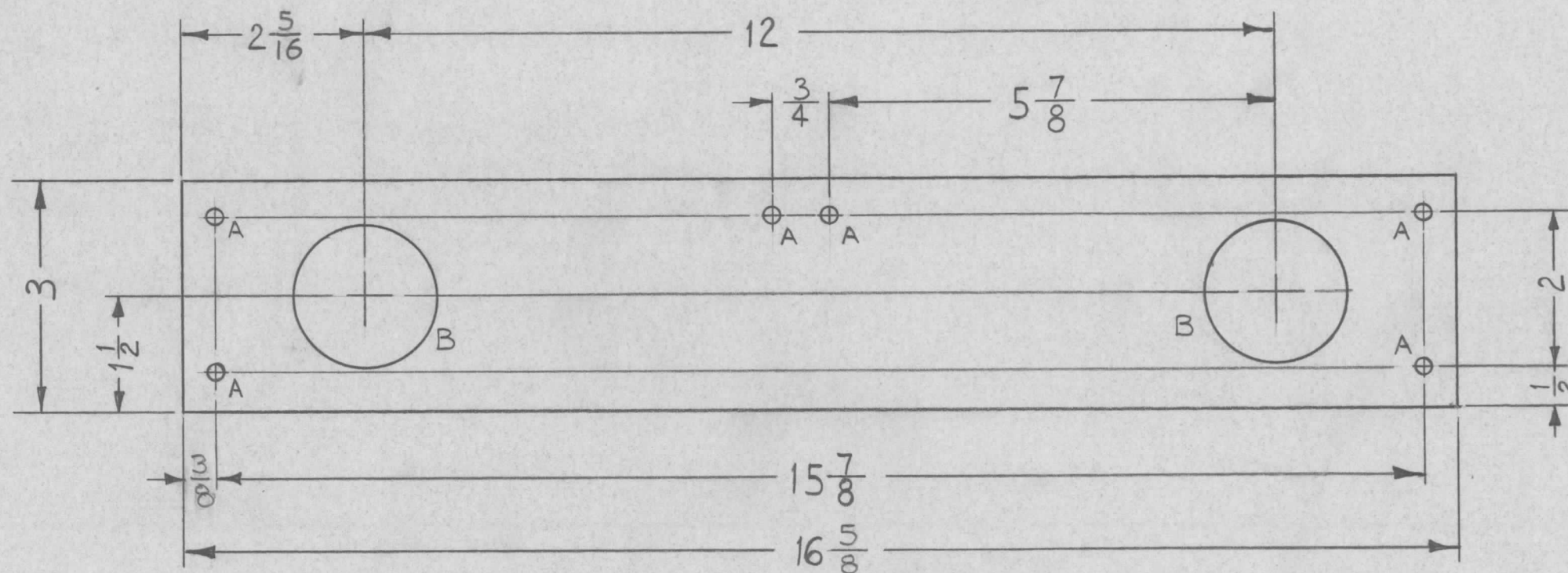
THE TECHNICAL MATERIEL CORPORATION
MAMARONECK, NEW YORK

A ~ $\frac{7}{32}$ DIA.

6 REQ

B ~ $1\frac{7}{8}$ DIA.

2 REQ.

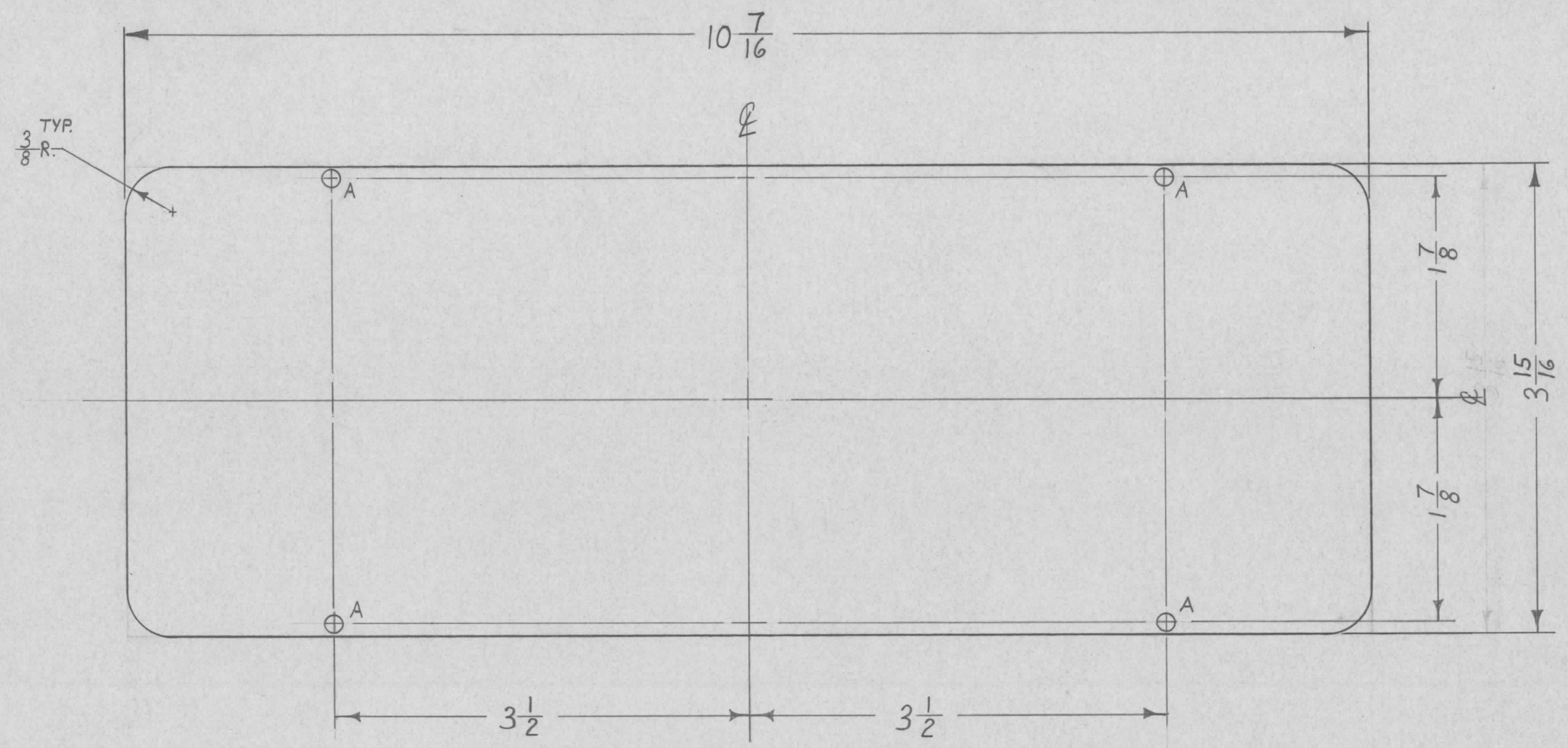


ISSUE	ITEM	CHANGED FROM	DATE	CH. NO.	DRAFTS	CHECKER	ENG. APP.
TOLERANCES			SCALE: 2:1 (DO NOT SCALE)				
DEC. DIM. ±			MAXIMUM ALLOWABLE TOLERANCES HAVE BEEN DETERMINED AND ANY DEVIATIONS WILL BE CAUSE FOR REJECTION.				
FRAC. DIM. ±			REMOVE ALL BURRS AND SHARP EDGES				
ANGULAR DIM. ±							

1	ACU			4-15-61
REQ. PER UNIT	MODEL	PROJECT NO.	ASSY. NO.	DATE
USED ON				

REQ. ITEM	PART NO.	DESCRIPTION		SYMBOL
1/4		THE TECHNICAL MATERIEL CORP. MAMARONECK, NEW YORK		
	STOCK SIZE	PLATE, BOWL MOUNTING		
	SILICONE GLASS			
	MATERIAL			
G7		W.A.F. <i>[Signature]</i>	<i>[Signature]</i>	
TYPE & TEMPER	HEAT TREAT. SPEC.	DRAWN	CHECKED	FINAL APPROVAL
		<i>[Signature]</i>	<i>[Signature]</i>	PX-589
FINISH & SPEC. NO.		ELEC. DES. APP.	MECH. DES. APP.	

PX-592



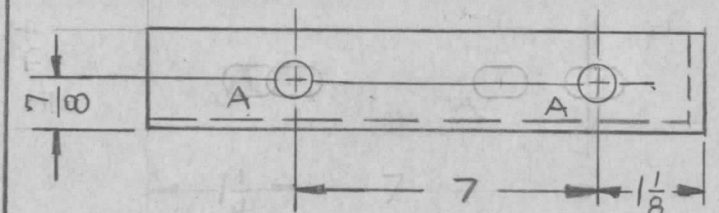
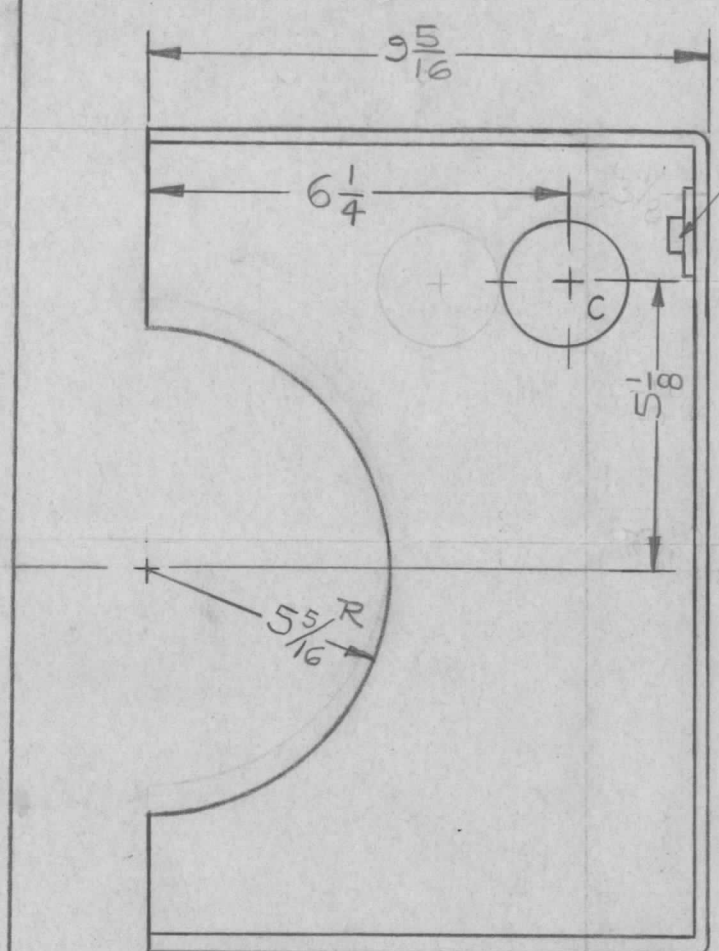
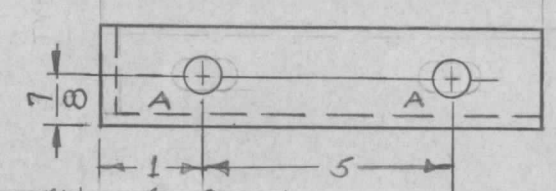
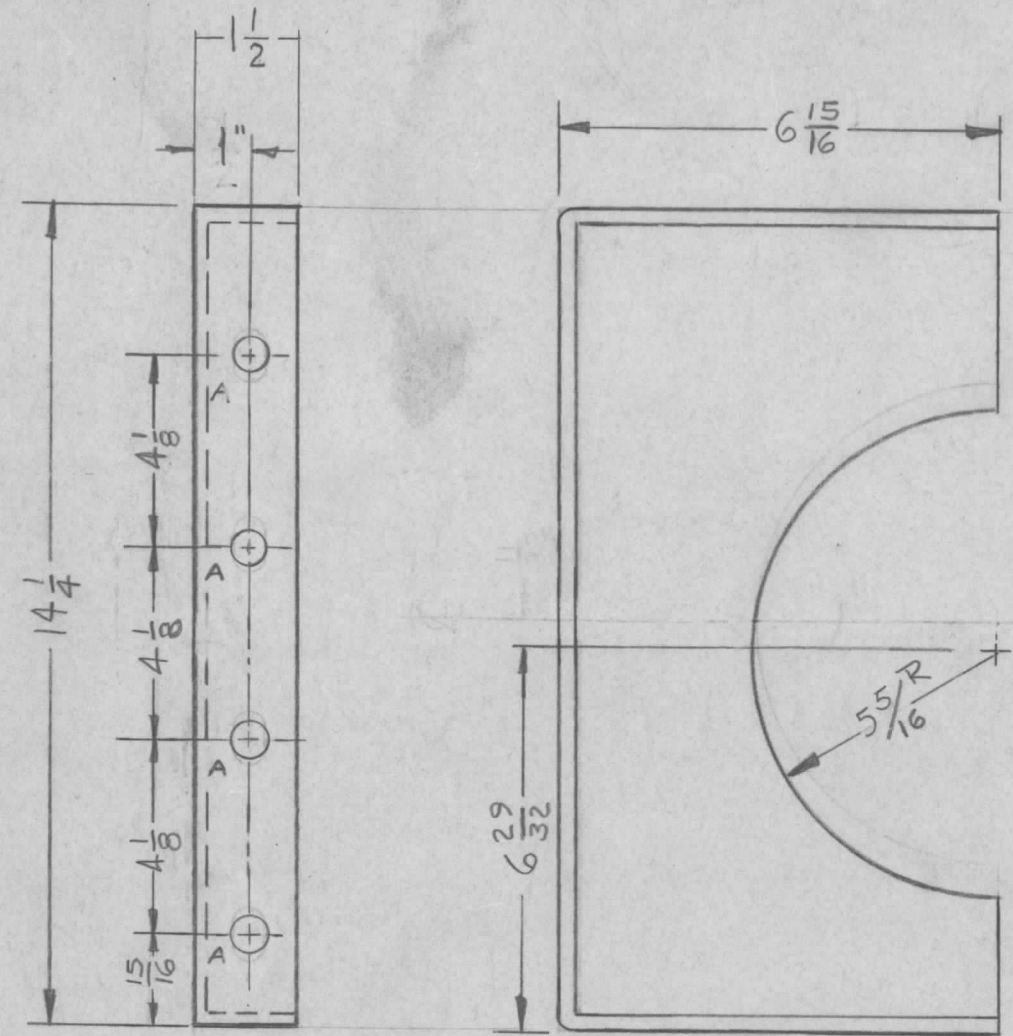
A ~ 1/8 DIA. 4 REQ.

ISSUE	ITEM	CHANGED FROM	DATE	CH. NO.	DRAFTS	CHECKER	ENG. APP.
TOLERANCES			SCALE: FULL				
DEC. DIM. ±			MAXIMUM ALLOWABLE TOLERANCES HAVE BEEN DETERMINED AND ANY DEVIATIONS WILL BE CAUSE FOR REJECTION. REMOVE ALL BURRS AND SHARP EDGES				
FRAC. DIM. ± 1/64							
ANGULAR DIM. ±							

1	ACU			10-4-60
REQ. PER UNIT	MODEL	PROJECT NO.	ASS'Y. NO.	DATE
USED ON				

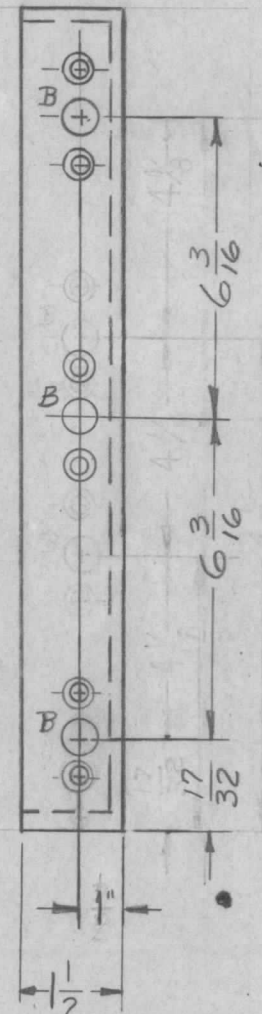
REQ. ITEM	PART NO.	DESCRIPTION	SYMBOL
1/8		THE TECHNICAL MATERIEL CORP. MAMARONECK. NEW YORK	
	STOCK SIZE		
	PLEXIGLASS	WINDOW, FRONT PANEL	
	MATERIAL		
		<i>[Signature]</i>	<i>[Signature]</i>
	TYPE & TEMPER	DRAWN	CHECKED
	HEAT TREAT. SPEC.	<i>[Signature]</i>	<i>[Signature]</i>
	FINISH & SPEC. NO.	ELEC. DES. APP.	MECH. DES. APP.
			PX-592

PX 594 G

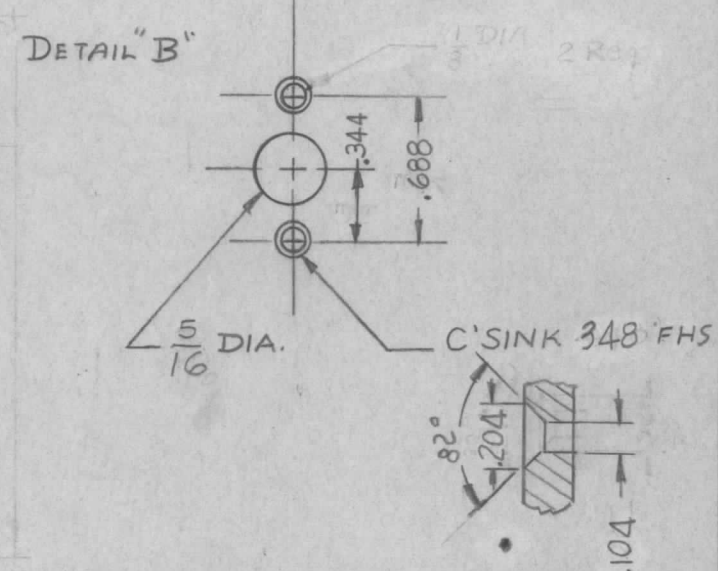


MOUNT ITEM (1, 2, 3 & 4) IN ALL "B" HOLES AS SHOWN AFTER FINISHING

- 1
- 2
- 3
- 4



A - 3/16 DIA. SLIT 12 REQ
 B - SEE DETAIL 3 REQ
 C - 2 5/8 DIA 1 REQ



NOTICE TO PERSONS RECEIVING THIS DRAWING

THE TECHNICAL MATERIEL CORPORATION claims proprietary right in the material disclosed herein. This drawing is issued in confidence for engineering information only and may not be reproduced or used to manufacture anything shown hereon without permission from THE TECHNICAL MATERIEL CORPORATION to the user. This drawing is loaned for mutual assistance and is subject to recall at any time.

G	IT. 1 TO 4 ADD, 1 IT. 1 DEL, 348 WAS 440	2-20-67	17829			
F	A HOLES WERE SLOTS	8-16-65	14676			
E	1 ON PX-594-2, "C" DIA. WAS 2 1/4.	2-15-65	13428			
D	4 ON PX-594-2, (1) "B" HOLE RELOCATED	2-28-63	8294			
	3 ON PX-594-2, (1) "B" HOLE DELETED					
	2 ON PX-594-2, 5 5/16 R. WAS 5 3/16					
C	1 ON PX-594-1, 5 3/16 R. WAS 5 3/16					
B	2 ON PX-594-1 & 2 DIMS. 1/8 WAS 3/8 TYP.; 1" WAS 1/2; 1 1/2 WAS 1" TYP.	2-7-63	8234			
	1 ITEM "1" ADDED DIM 1/2 WAS 3/8	11/29/60	3590			
A	2 DIM. .688 WAS 3/4, .344 WAS 3/8	11/4/60	3396			
	1 5/16 DIA WAS 3/8					
ISSUE ITEM	CHANGED FROM	DATE	CH. NO.	DRAFTS	CHECKER	ENG. APP.
TOLERANCES		SCALE: (DO NOT SCALE)				
DEC. DIM. ±		MAXIMUM ALLOWABLE TOLERANCES HAVE BEEN DETERMINED AND ANY DEVIATIONS WILL BE CAUSE FOR REJECTION. REMOVE ALL BURRS AND SHARP EDGES				
FRAC. DIM. ± 1/64						
ANGULAR DIM. ±						

PX-594-1

PX-594-2

* NOTE - USED ON PX594-2 ONLY.

* 6	4	NTH0348BNG	NUT, PLAIN, HEX	B
* 6	3	LW503MRN	LOCKWASHER, SPLIT	B
* 6	2	SCFP0348BN5	SCREW, MACHINE	B
* 3	1	NT-117-832-A	NUT, FLOATING ANCHOR	B
REQ. ITEM	PART NO.		DESCRIPTION	SYMBOL
3/32		THE TECHNICAL MATERIEL CORP.		
STOCK SIZE		MAMARONECK, NEW YORK		
FIBERGLASS		BOTTOM FLUE		
MATERIAL				
		RU220		OB
TYPE & TEMPER		HEAT TREAT. SPEC.	DRAWN	CHECKED
TMC GRAY			RB	me
FINISH & SPEC. NO.		ELEC. DES. APP. MECH. DES. APP.		
		PX-594 G		