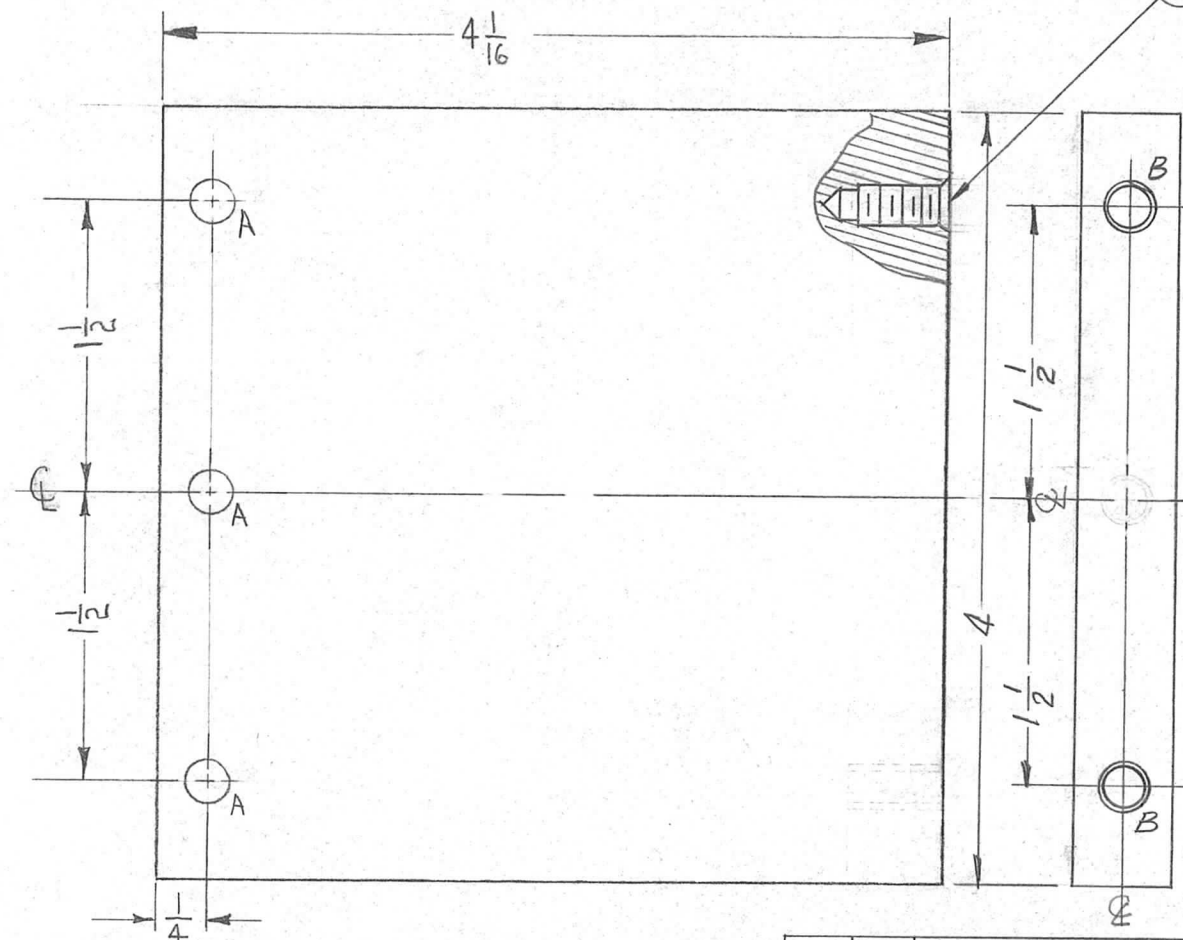


REQ. PER UNIT	USED ON			PX-500	B
	MODEL	ASSY. NO.	DATE		
1	AX-212	GPT-40K	11/12/60		

① MOUNT ITEM 1 IN ALL 'B' HOLES AS SHOWN AFTER FINISHING.



HOLE LEGEND

- A - 7/32 (.218) DIA. 3-REQ.
- B - HOLES TO BE MACHINED AS FOLLOWS: 2-REQ.
- 1- 13/64 DRILL (.203) TO .562 DP.
- 2- 120°C SINK .22-.25 DIA.
- 3- TAP .410 MIN. DEPTH, USE HELI COIL TAP # 3FPB
- 4- MOUNT ITEM (1) 3/4 TO 1-1/2 PITCH BELOW SURFACE.
- 5- BREAK OFF DRIVING TANG.

**FUNGUS PROOFING PER TMC SPECIFICATION S-113**

\* NOTE: APPLY S-113 BEFORE HARDWARE IS MOUNTED

								2	1	NT-139-SFI-20	INSERT, SCREW THREAD			
								REQ.	ITEM	PART NO.	DESCRIPTION	SYMBOL		
										1/2 THICK	THE TECHNICAL MATERIEL CORP. MAMARONECK, NEW YORK			
										STOCK SIZE				
										PHENOLIC	BOARD, SUPPORT			
										MATERIAL				
										XXXP LAMINATE				
										TYPE & TEMPER	HEATTREAT. SPEC.	DRAWN	CHECKED	FINAL APPROVAL
										* S-113		EM	RLN	PX-500 B
										FINISH & SPEC. NO.		ELEC. DES. APP	MECH. DES. APP	

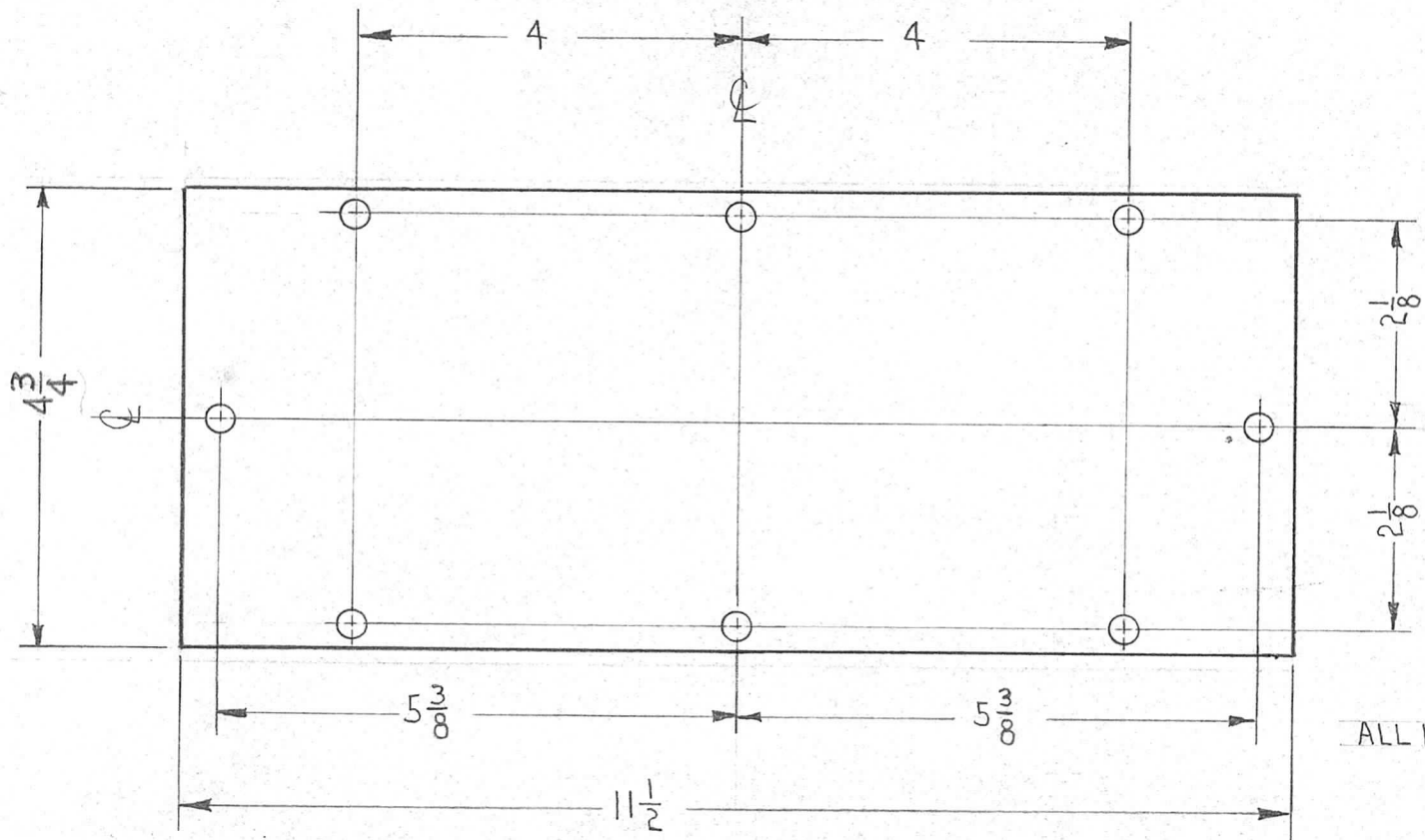
ISSUE	ITEM	CHANGED FROM	DATE	CH. NO.	DRAFTS	CHECKER	ENG. APP.
B	1	S-113 NOTE ADDED	4.13.64	11186	WB	WJ	WJ
A	2	'B' HOLES WERE DR & TAP 10-32	8-10-62	7008	GS	WJ	WJ
	1	ITEM 1 ADDED					

TOLERANCES		SCALE: FULL
DEC. DIM. ±		MAXIMUM ALLOWABLE TOLERANCES HAVE BEEN DETERMINED AND ANY DEVIATIONS WILL BE CAUSE FOR REJECTION. REMOVE ALL BURRS AND SHARP EDGES
FRAC. DIM. ±	1/64	
ANGULAR DIM. ±		

REQ. PER UNIT	USED ON		
	MODEL	ASS'Y. NO.	DATE
1	AX-212	GPT-40K	11/13/60
1	AX-398	GPT-200K	8-14-63

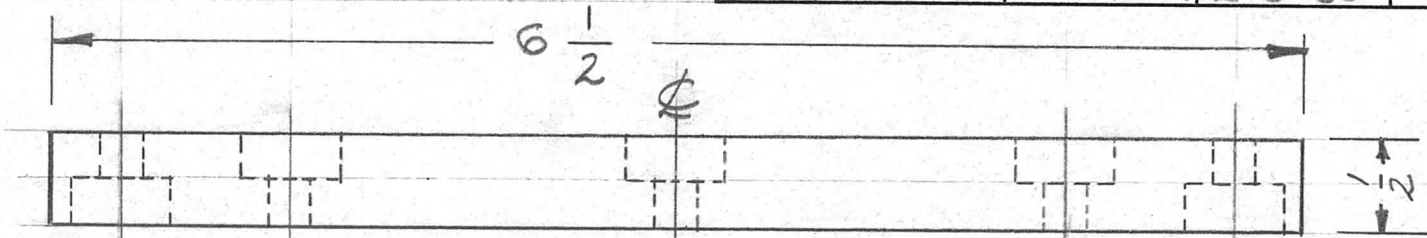
PX-501 A



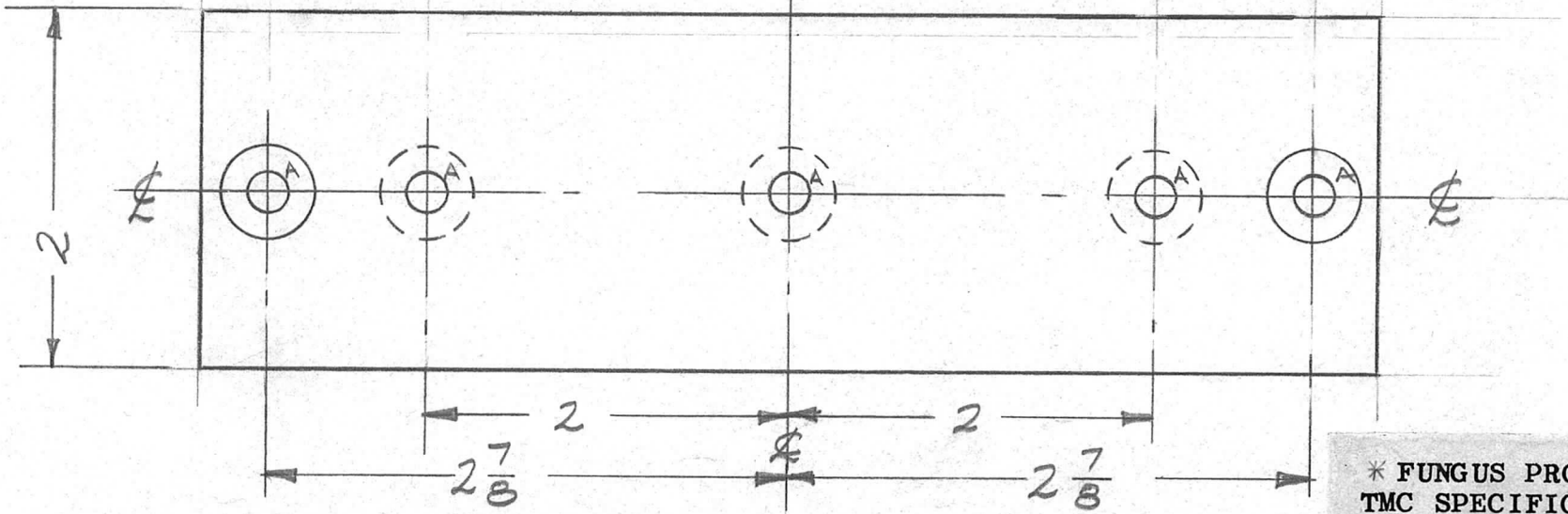
ALL HOLES - 9/64 (.140) D.

ISSUE	ITEM	CHANGED FROM	DATE	CH. NO.	DRAFTS	CHECKER	ENG. APP.	REQ. ITEM	PART NO.	DESCRIPTION	SYMBOL	
								3/16 THICK		THE TECHNICAL MATERIEL CORP. MAMARONECK, NEW YORK		
								STOCK SIZE				
A	1	4 3/4 DIM WAS 5" IN" USED ON AX-398 ADDED.	8-14-63	9754	AR	JWZ	16	PLEXIGLAS		WINDOW, FRONT PANEL (CROWBAR DRAWER)		
TOLERANCES			SCALE: 1/2									
DEC. DIM. ± FRAC. DIM. ± 1/64 ANGULAR DIM. ±			MAXIMUM ALLOWABLE TOLERANCES HAVE BEEN DETERMINED AND ANY DEVIATIONS WILL BE CAUSE FOR REJECTION. REMOVE ALL BURRS AND SHARP EDGES									
								TYPE & TEMPER	HEAT TREAT. SPEC.	DRAWN	CHECKED	FINAL APPROVAL
										Em	R.L.N.	PX-501 A
								FINISH & SPEC. NO.		ELEC. DES. APP	MECH. DES. APP	

REQ. PER UNIT	USED ON			PX-512	A
	MODEL	ASS'Y. NO.	DATE		
2	AP-103	GPT-40K	2-3-60		



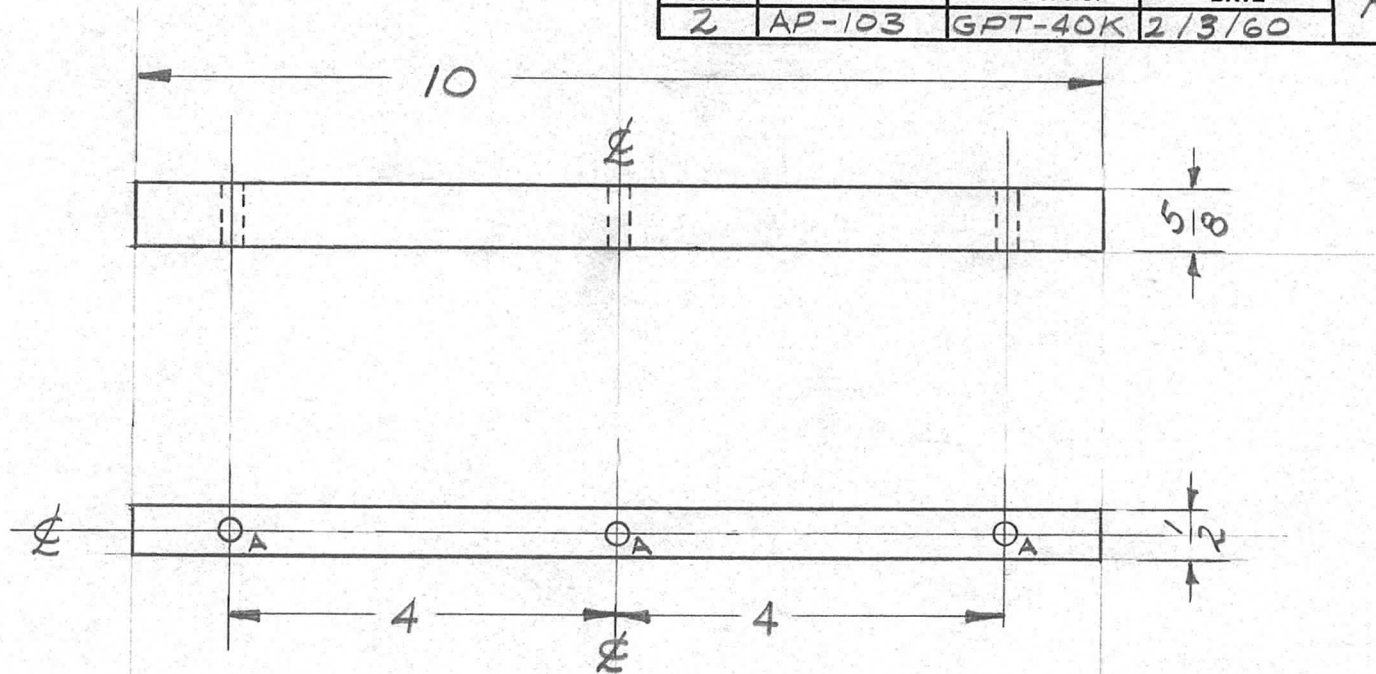
A-7/32(.218)D. THRU.  
 CBORE 1/2D. X 1/4DP.  
 5 REQ'D.



\* FUNGUS PROOFING PER  
 TMC SPECIFICATION S-113

ISSUE	ITEM	CHANGED FROM	DATE	CH. NO.	DRAFTS	CHECKER	ENG. APP.	REQ. ITEM	PART NO.	DESCRIPTION	SYMBOL				
								1/2 TH'K. STOCK SIZE		THE TECHNICAL MATERIEL CORP. MAMARONECK, NEW YORK					
A		S113 ADDED	4/13/64	11186	A.M.	<i>[Signature]</i>	<i>[Signature]</i>	PHENOLIC		BOARD, RESISTOR CLIP MT'G. SMALL					
TOLERANCES								MATERIAL		DRAWN		CHECKED		FINAL APPROVAL	
DEC. DIM. ±			SCALE: FULL			MAXIMUM ALLOWABLE TOLERANCES HAVE BEEN DETERMINED AND ANY DEVIATIONS WILL BE CAUSE FOR REJECTION. REMOVE ALL BURRS AND SHARP EDGES		XXXX P LAMINATE	HEAT TREAT. SPEC.	<i>[Signature]</i>	<i>[Signature]</i>	<i>[Signature]</i>			
FRAC. DIM. ±								NATURAL *		<i>[Signature]</i>	<i>[Signature]</i>	PX-512		A	
ANGULAR DIM. ±								FINISH & SPEC. NO.		ELEC. DES. APP	MECH. DES. APP				

REQ. PER UNIT	USED ON			PX-514	A
	MODEL	ASS'Y. NO.	DATE		
	2	AP-103	GPT-40K		

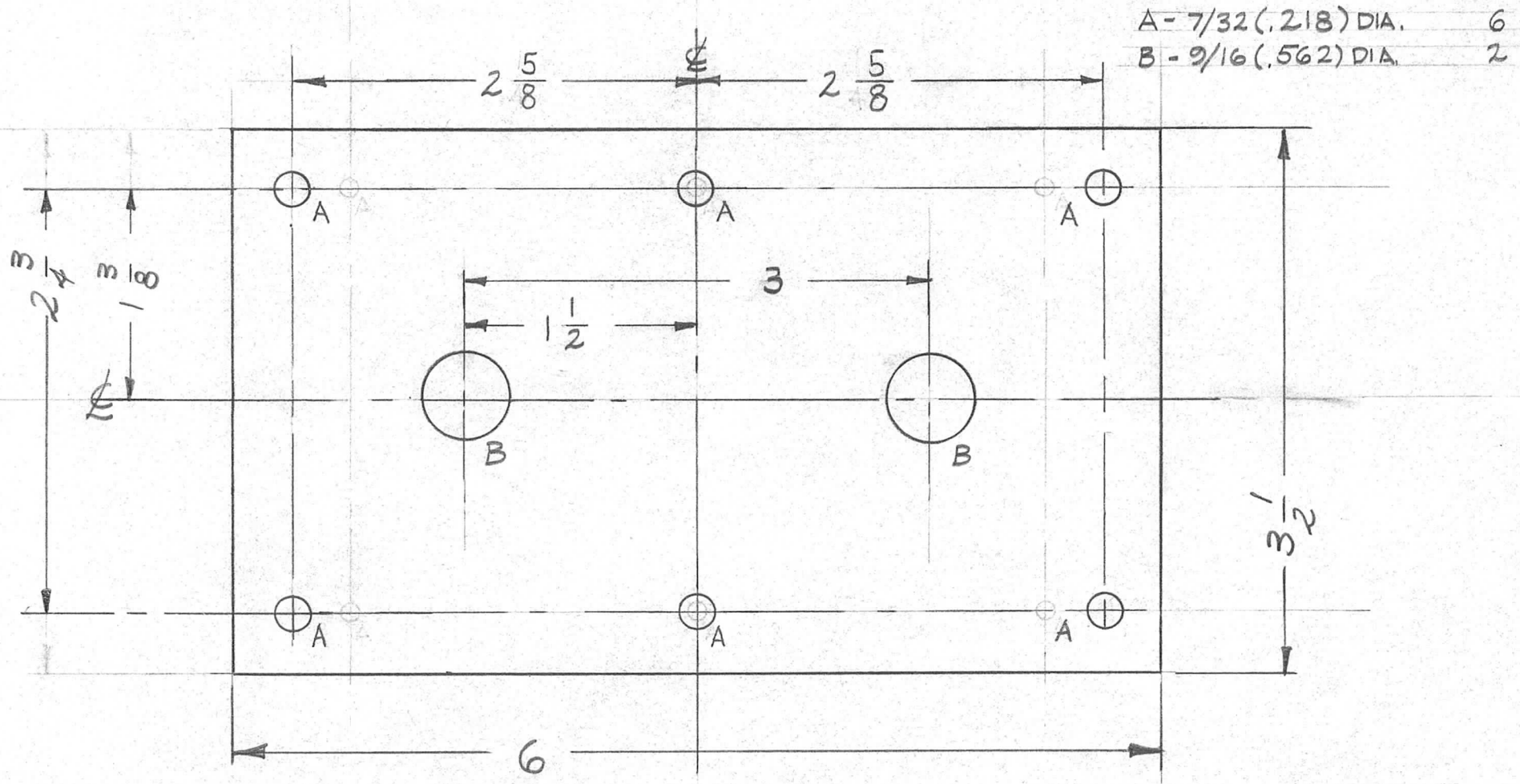


A-7/32 (.218) D 3 REQ'D.

\* FUNGUS PROOFING PER  
TMC SPECIFICATION S-113

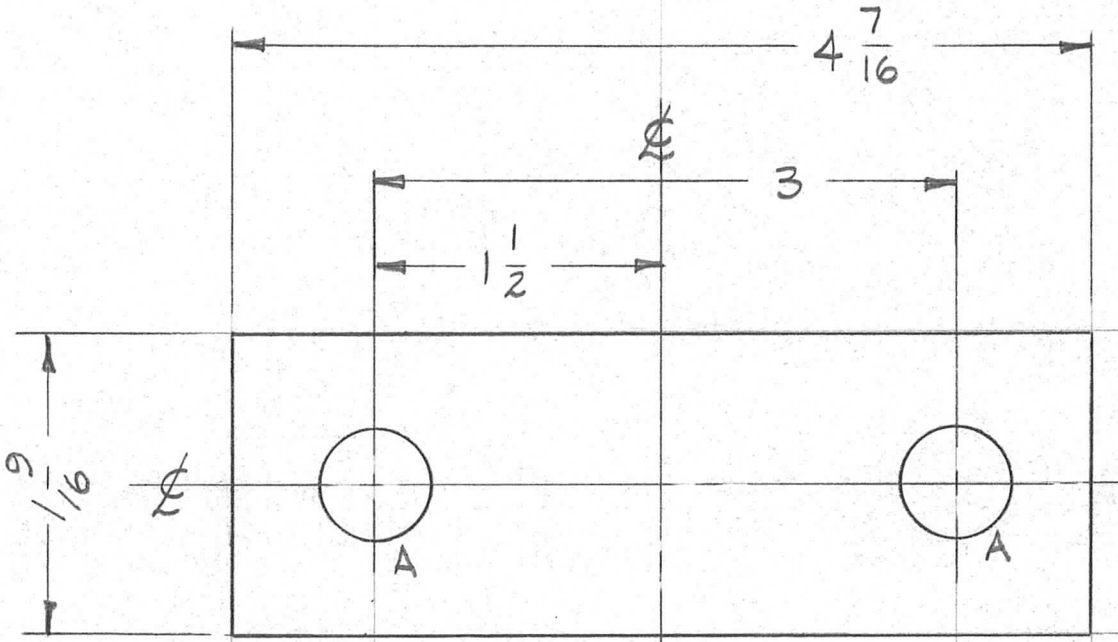
ISSUE	ITEM	CHANGED FROM	DATE	CH. NO.	DRAFTS	CHECKER	ENG. APP.	REQ.	ITEM	PART NO.	DESCRIPTION	SYMBOL	
										1/2 TH'K. STOCK SIZE	THE TECHNICAL MATERIEL CORP. MAMARONECK, NEW YORK		
A		S113 ADDED	4/13/64	11186	A.M.	<i>[Signature]</i>	<i>[Signature]</i>			PHENOLIC MATERIAL	SUPPORT, H.V. CONTACT BOARD (SMALL)		
TOLERANCES			SCALE:							xxxp LAMINATE	<i>[Signature]</i>	<i>[Signature]</i>	
DEC. DIM. ± FRAC. DIM. ± ANGULAR DIM. ±			MAXIMUM ALLOWABLE TOLERANCES HAVE BEEN DETERMINED AND ANY DEVIATIONS WILL BE CAUSE FOR REJECTION. REMOVE ALL BURRS AND SHARP EDGES							NATURAL *	DRAWN	CHECKED	FINAL APPROVAL
1/64										FINISH & SPEC. NO.	ELEC. DES. APP.	MECH. DES. APP.	PX-514 A

REQ. PER UNIT	USED ON			PX-515	B
	MODEL	ASS'Y. NO.	DATE		
1	GPT-40K	AX-209	2-12-60		



								REQ. ITEM	PART NO.	DESCRIPTION	SYMBOL			
								1/4 THICK		THE TECHNICAL MATERIEL CORP.				
								STOCK SIZE		MAMARONECK, NEW YORK				
								SILICONE GLASS		PLATE, FEED-THRU				
								MATERIAL		P.A. SECTION				
B	1	DIMS. 2 5/8 WAS 2 1/4	4-20-60	2150	<i>mg</i>	<i>HO</i>								
A	1	MAT. WAS EPOXY	3-28-60	1952	<i>mg</i>	<i>HO</i>								
ISSUE	ITEM	CHANGED FROM	DATE	CH. NO.	DRAFTS	CHECKER	ENG. APP.							
TOLERANCES			SCALE: <i>H</i>											
DEC. DIM. ±			MAXIMUM ALLOWABLE TOLERANCES HAVE BEEN DETERMINED AND ANY DEVIATIONS WILL BE CAUSE FOR REJECTION. REMOVE ALL BURRS AND SHARP EDGES											
FRAC. DIM. ± <i>1/64</i>														
ANGULAR DIM. ±														
								GT		<i>JORILLIS</i> 2-11-60	<i>203</i>			
								TYPE & TEMPER	HEATTREAT. SPEC.	DRAWN	CHECKED	FINAL APPROVAL		
								FINISH & SPEC. NO.	ELEC. DES. APP.	MECH. DES. APP.	PX-515	B		

REQ. PER. UNIT	USED ON			PX-516	A
	MODEL	ASS'Y. NO.	DATE		
1	GPT-40K	AX-209	2-12-60		

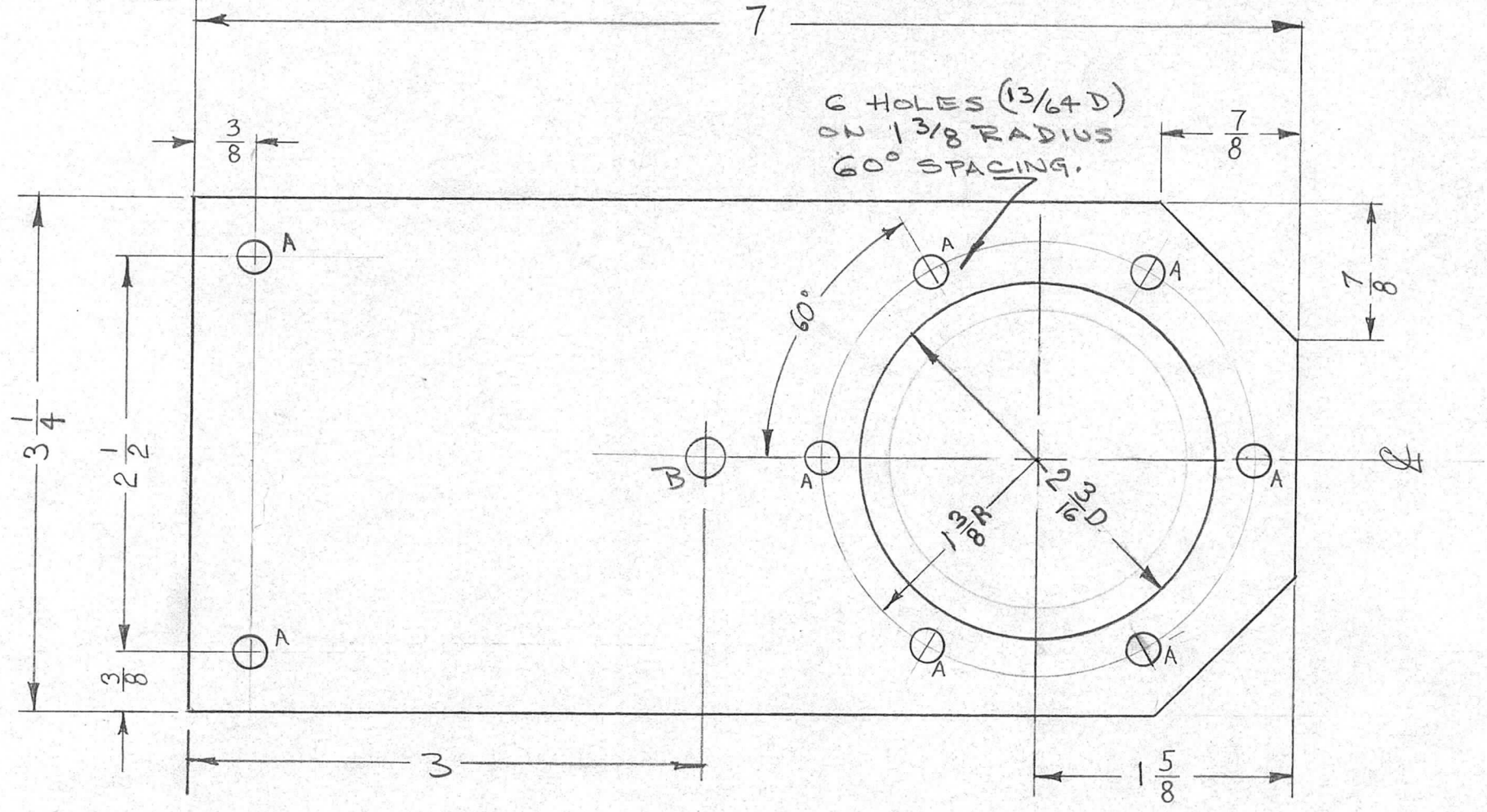


A - 9/16 (.562) DIA. 2 REQ'D.

								REQ. ITEM	PART NO.	DESCRIPTION	SYMBOL	
								1/4 THICK		THE TECHNICAL MATERIEL CORP.		
								STOCK SIZE		MAMARONECK, NEW YORK		
								SILICONE GLASS		SUB PLATE, FEED THRU		
								MATERIAL		PA - SECTION		
A	1	MAT. WAS EPOXY	3-28-60	1951	918	ma	16	G7	<del>TORILLO</del>	file	DOB	
ISSUE	ITEM	CHANGED FROM	DATE	CH. NO.	DRAFTS	CHECKER	ENG. APP.	TYPE & TEMPER	HEAT TREAT. SPEC.	DRAWN	CHECKED	FINAL APPROVAL
TOLERANCES			SCALE: #									
DEC. DIM. ±			MAXIMUM ALLOWABLE TOLERANCES HAVE BEEN DETERMINED AND ANY DEVIATIONS WILL BE CAUSE FOR REJECTION.									
FRAC. DIM. ± 1/64			REMOVE ALL BURRS AND SHARP EDGES									
ANGULAR DIM. ±								FINISH & SPEC. NO.		ELEC. DES. APP MECH. DES. APP		PX-516 A

A - 13/64 (.203) D 8 REQ.  
 B - 17/64 DIA 1 REQ

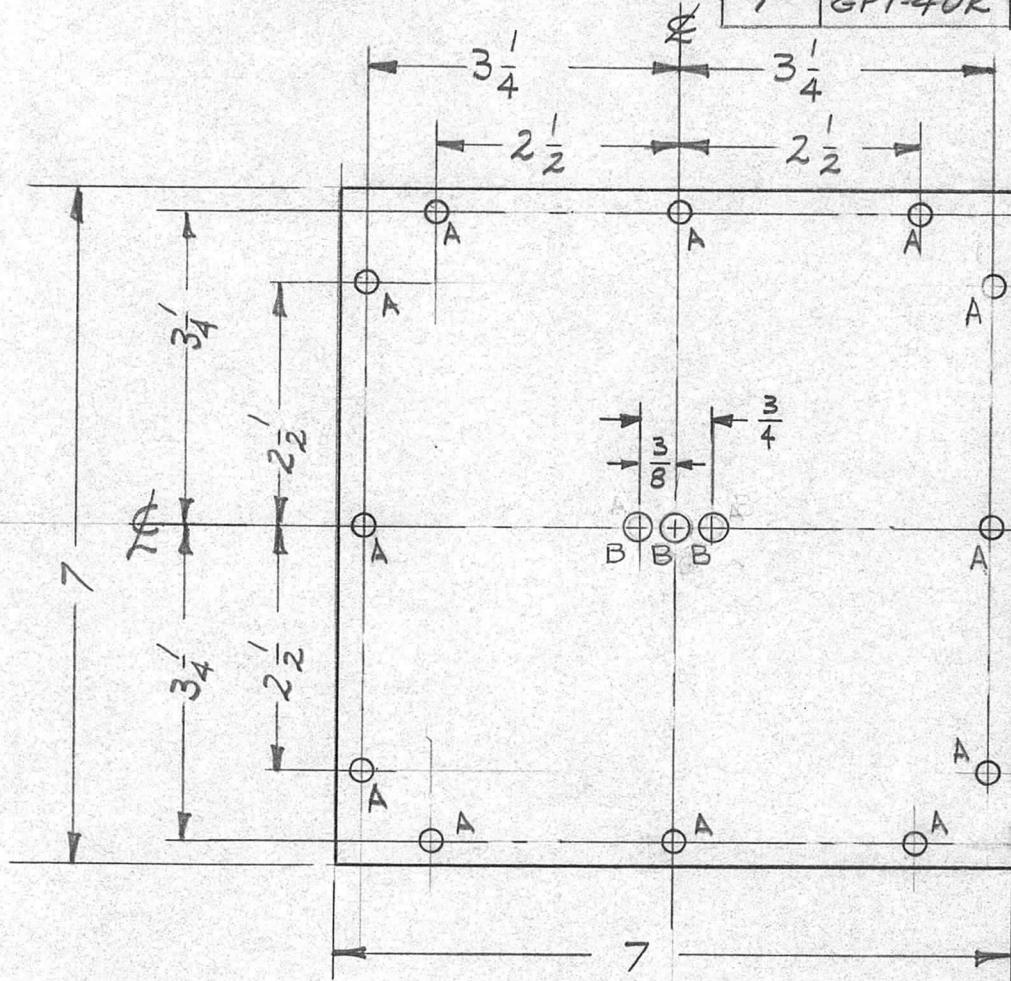
REQ. PER UNIT	USED ON			PX-517	B
	MODEL	ASSY. NO.	DATE		
2	AX-209	GPT-40K	2-8-60		



ISSUE	ITEM	CHANGED FROM	DATE	CH. NO.	DRAFTS	CHECKER	ENG. APP.	REQ. ITEM	PART NO.	DESCRIPTION	SYMBOL		
									1/4 THK.	THE TECHNICAL MATERIEL CORP. MAMARONECK, NEW YORK			
									STOCK SIZE				
									SILICONE GLASS		SUPPORT		
									MATERIAL	FIXED CAPACITOR			
									G7				
									TYPE & TEMPER	HEAT TREAT. SPEC.	DRAWN	CHECKED	FINAL APPROVAL
									FINISH & SPEC. NO.	ELEC. DES. APP	MECH. DES. APP	PX-517	B

REQ. PER UNIT	USED ON		
	MODEL	ASSY. NO.	DATE
1	GPT-40K	AT-101	2-17-60
1	GPT-40K	AP-103	

PX-518 C



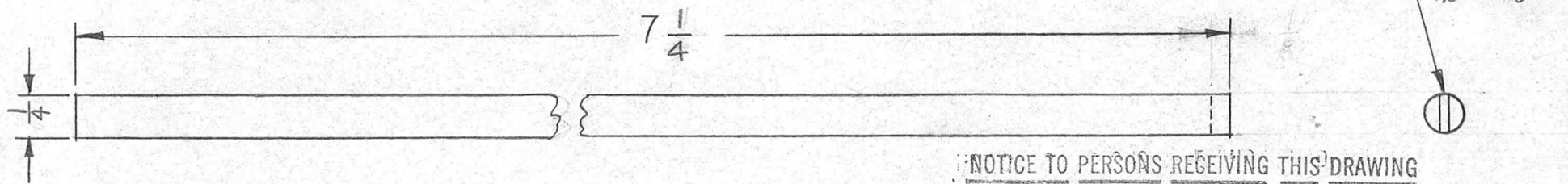
HOLES	REQ.
A- 7/32 (.218) DIA.	12
B- 9/32 DIA.	3

LD-822(1) (for AP-103)  
REF- TMC DWG NO. LD-808(1) (for AT-101)

ISSUE	ITEM	CHANGED FROM	DATE	CH. NO.	DRAFTS	CHECKER	ENG. APP.	REQ. ITEM	PART NO.	DESCRIPTION	SYMBOL		
C	2	"B" WAS 5/16 DIA.	7-22-60	26									
	1	(2) "B" HOLES REPLACED (2) "A" HOLES		22									
B	1	MAT. WAS EPOXY	4-1-60	1973									
A	1	1 Per AP-103 Added	7/12/60										
TOLERANCES								SCALE: 1/2					
DEC. DIM. ±								MAXIMUM ALLOWABLE TOLERANCES HAVE BEEN DETERMINED AND ANY DEVIATIONS WILL BE CAUSE FOR REJECTION. REMOVE ALL BURRS AND SHARP EDGES					
FRAC. DIM. ±													
ANGULAR DIM. ±													
								67		TOL 1/50		JNe	
								TYPE & TEMPER		HEAT TREAT. SPEC.		DRAWN	
												CHECKED	
												R2N	
								FINISH & SPEC. NO.		ELEC. DES. APP.		MECH. DES. APP.	
												PX-518 C	



REQ. PER UNIT	USED ON			PX-524	D
	MODEL	ASS'Y. NO.	DATE		
1	RFB-1		2-18-60		
1	RFD-1		2-18-60		



NOTE  
REMOVE SHARP EDGES

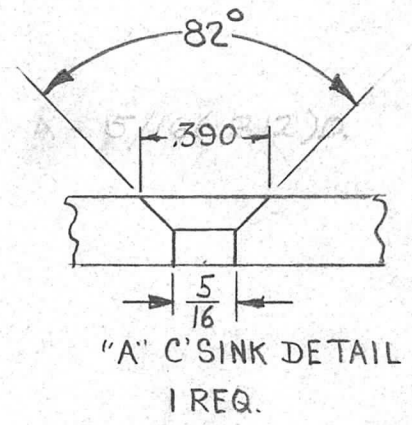
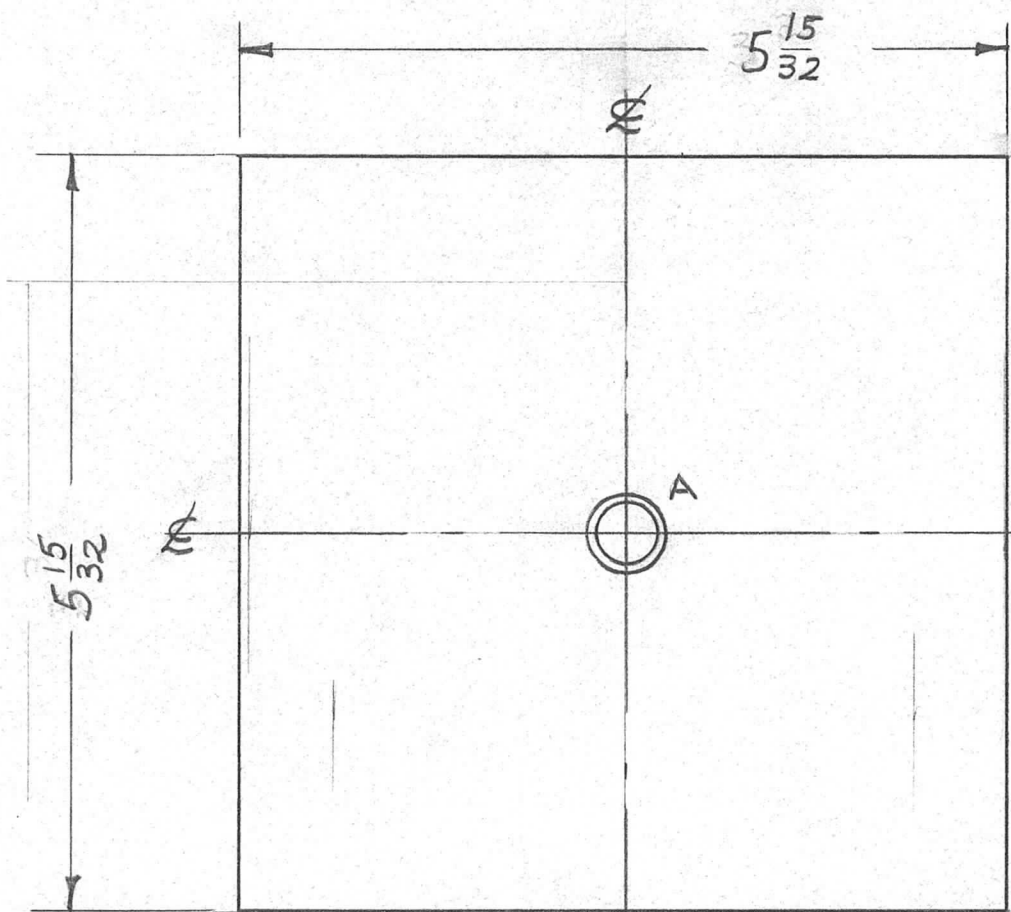
NOTICE TO PERSONS RECEIVING THIS DRAWING

THE TECHNICAL MATERIEL CORPORATION claims proprietary right in the material disclosed hereon. This drawing is issued in confidence for engineering information only and may not be reproduced or used to manufacture anything shown hereon without permission from THE TECHNICAL MATERIEL CORPORATION to the user. This drawing is loaned for mutual assistance and is subject to recall at any time.

Property of:  
THE TECHNICAL MATERIEL CORPORATION  
MAMARONECK, NEW YORK

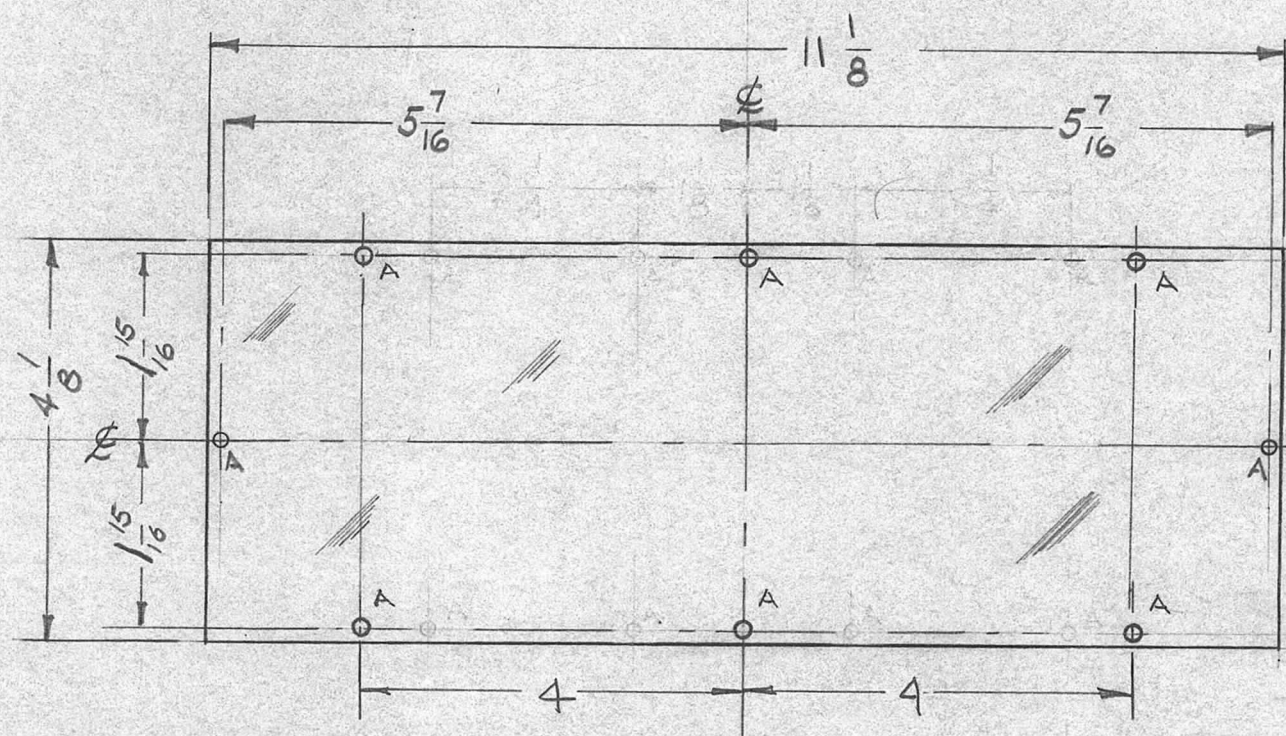
ISSUE	ITEM	CHANGED FROM	DATE	CH. NO.	DRAFTS	CHECKER	ENG. APP.	REQ.	ITEM	PART NO.	DESCRIPTION	SYMBOL					
D	1	DIM 7/4 WAS 7	8.6.64	12071	LSB	@	203				THE TECHNICAL MATERIEL CORP. MAMARONECK, NEW YORK NEUTRALIZER SHAFT	D					
C	1	TYPE & TEMPER WAS XXXP	4.15.64	11222	LSB	file	203			1/4 THK.							
B	1	7" DIM. WAS 7 1/4	9/27/63	10090	LSB	file	203			STOCK SIZE							
A	1	DELETED 1/8 DIM, 7/4 DIM WAS TO BOTTOM OF SLOT	4-16-63	8806	LSB	file	203			PHENOLIC							
TOLERANCES			SCALE: FULL					XXX									
DEC. DIM. ± FRAC. DIM. ± 1/64 ANGULAR DIM. ±			MAXIMUM ALLOWABLE TOLERANCES HAVE BEEN DETERMINED AND ANY DEVIATIONS WILL BE CAUSE FOR REJECTION: REMOVE ALL BURRS AND SHARP EDGES					TYPE & TEMPER		HEAT TREAT. SPEC.		DRAWN		CHECKED		FINAL APPROVAL	
								FINISH & SPEC. NO.		ELEC. DES. APP		MECH. DES. APP		PX-524		D	

REQ. PER. UNIT	USED ON			PX-525	C
	MODEL	ASS'Y. NO.	DATE		
1	GPT-40K	AT-101	2-19-60		



ISSUE	ITEM	CHANGED FROM	DATE	CH. NO.	DRAFTS	CHECKER	ENG. APP.	REQ. ITEM	PART NO.	DESCRIPTION	SYMBOL	
C	1	ON DETAIL "A" 82° ADD.	10.21.64	12684	lrb	JCS	[Signature]			THE TECHNICAL MATERIEL CORP. MAMARONECK, NEW YORK PLATE CONTACT BUTTON FEED THRU	C	
B	2	MAT. WAS EPOXY						1/4 TH'K.				
B	1	5 15/32 WAS 3 31/32	4-4-60	1972	ms	JLD		STOCK SIZE				
A	2	C'SINK DETAIL ADDED						SILICONE GLASS				
A	1	"A" WAS 5/16 D.	3-11-60			MS	VO					
TOLERANCES			SCALE:									
DEC. DIM. ±			MAXIMUM ALLOWABLE TOLERANCES HAVE BEEN DETERMINED AND ANY DEVIATIONS WILL BE CAUSE FOR REJECTION.									
FRAC. DIM. ±			REMOVE ALL BURRS AND SHARP EDGES									
ANGULAR DIM. ±												
								G7		JLD	QB	
								TYPE & TEMPER	HEATTREAT. SPEC.	DRAWN	CHECKED	FINAL APPROVAL
											RLN	PX-525
								FINISH & SPEC. NO.	ELEC. DES. APP	MECH. DES. APP		

REQ. PER UNIT	USED ON			PX-530	A
	MODEL	ASSY. NO.	DATE		
1	AT-101	GPT-40K	3-3-60		

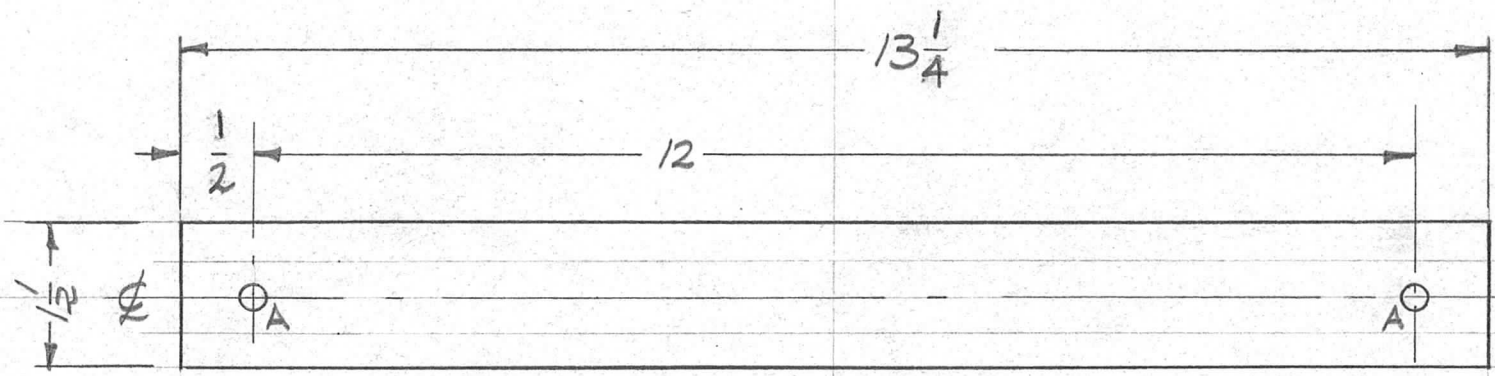


A - 1/8 (.125) D. 8 REQ.

ISSUE	ITEM	CHANGED FROM	DATE	CH. NO.	DRAFTS	CHECKER	ENG. APP.	REQ.	ITEM	PART NO.	DESCRIPTION	SYMBOL			
										3/16 TH'K	THE TECHNICAL MATERIEL CORP. MAMARONECK, NEW YORK				
										STOCK SIZE					
A	1	"A" HOLES RELOCATED	3/17/60	#	PI	<i>me</i>	<i>DR</i>			PLEXIGLASS	WINDOW FRONT PANEL (ANTENNA TUNER)				
										MATERIAL					
TOLERANCES			SCALE: 1/2								<i>Topillo</i>	<i>me</i>	<i>DR</i>		
DEC. DIM. ± FRAC. DIM. ± 1/64 ANGULAR DIM. ±			MAXIMUM ALLOWABLE TOLERANCES HAVE BEEN DETERMINED AND ANY DEVIATIONS WILL BE CAUSE FOR REJECTION. REMOVE ALL BURRS AND SHARP EDGES								TYPE & TEMPER	HEAT TREAT. SPEC.	DRAWN	CHECKED	FINAL APPROVAL
											FINISH & SPEC. NO.	ELEC. DES. APP	MECH. DES. APP		

PX-530 A

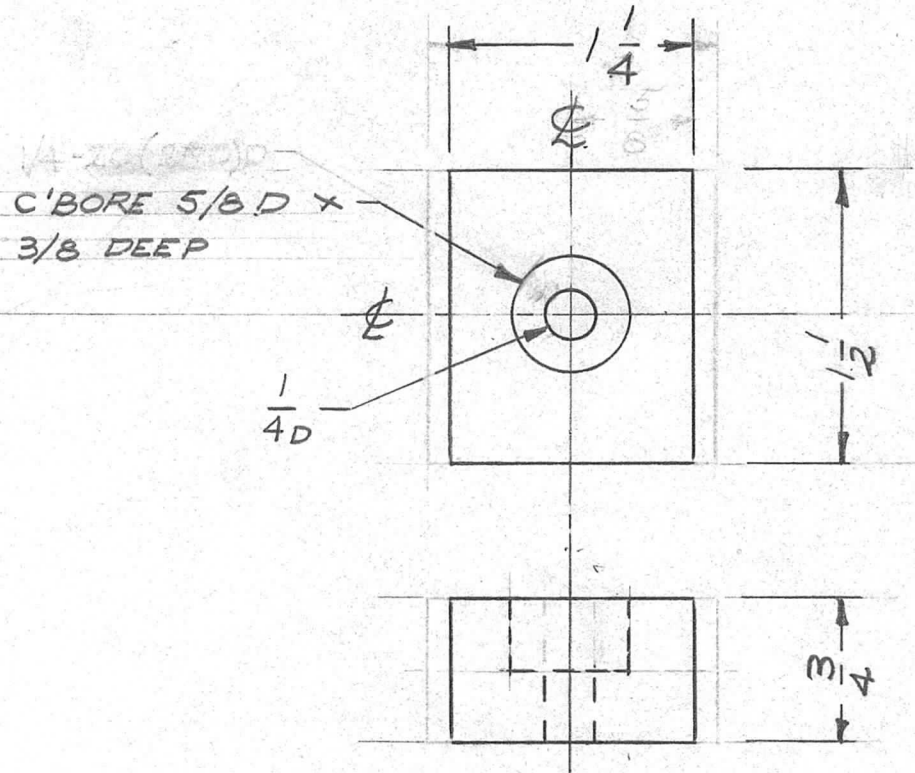
REQ. PER. UNIT	USED ON			PX-531	B
	MODEL	ASS'Y. NO.	DATE		
2	AP-102	GPT-40K	3-3-60		



A-1/4-20 (.250)D. 2 REQ.

								REQ.	ITEM	PART NO.	DESCRIPTION			SYMBOL				
										1/2	THE TECHNICAL MATERIEL CORP.							
										STOCK SIZE	MAMARONECK, NEW YORK							
										SILICONE GLASS	COIL SUPPORT							
										MATERIAL								
B	1	13 1/4 WAS 13 1/2 1/2 WAS 3/4	7-19 60	2597	P	Jde	OR											
A	1	MAT. WAS EPOXY	3-29-60	1960	M.F.	Jde	LG											
ISSUE	ITEM	CHANGED FROM	DATE	CH. NO.	DRAFTS	CHECKER	ENG. APP.											
TOLERANCES			SCALE: 1/2															
DEC. DIM. ±			MAXIMUM ALLOWABLE TOLERANCES HAVE BEEN DETERMINED AND ANY DEVIATIONS WILL BE CAUSE FOR REJECTION. REMOVE ALL BURRS AND SHARP EDGES															
FRAC. DIM. ±																		
ANGULAR DIM. ±																		
								G-7										
								TYPE & TEMPER	HEATTREAT. SPEC.	DRAWN	CHECKED	FINAL APPROVAL						
												PX-531 B						
								FINISH & SPEC. NO.	ELEC. DES. APP	MECH. DES. APP								

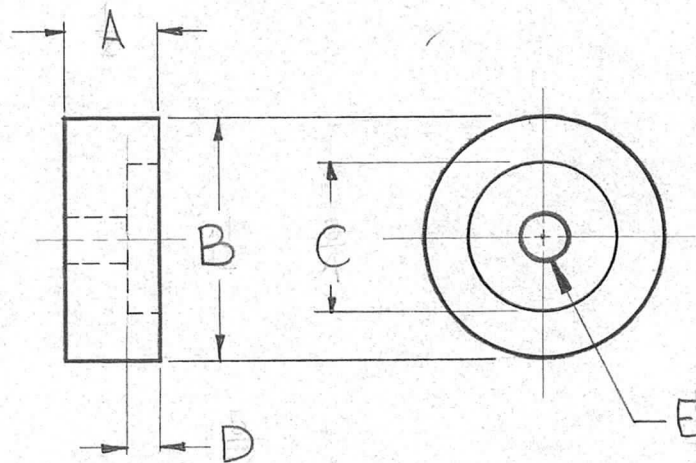
REQ. PER. UNIT	USED ON			PX-532	B
	MODEL	ASS'Y. NO.	DATE		
2	AX-244	GPT-40K	3-3-60		
2	AX-275	GPT-40K	11-7-61		



REQ.	ITEM	PART NO.	DESCRIPTION				SYMBOL
		1/2 x 1/2 x 3/4	THE TECHNICAL MATERIEL CORP.				
		STOCK SIZE	MAMARONECK, NEW YORK				
		SILICONE GLASS	COIL, SUPPORT, SPACER				
		MATERIAL					
		G7					
		TYPE & TEMPER	HEATTREAT. SPEC.	DRAWN	CHECKED	FINAL APPROVAL	
		FINISH & SPEC. NO.	ELEC. DES. APP	MECH. DES. APP			
					PX-532	B	

TMC PT/No	A	B	C	D	E
PX533	1/2	1-1/4	3/4	5/32	1/4
PX533-2	5/8	1-1/4	3/4	3/8	1/4
PX533-3	1/4	1-1/4	3/4	5/32	1/4

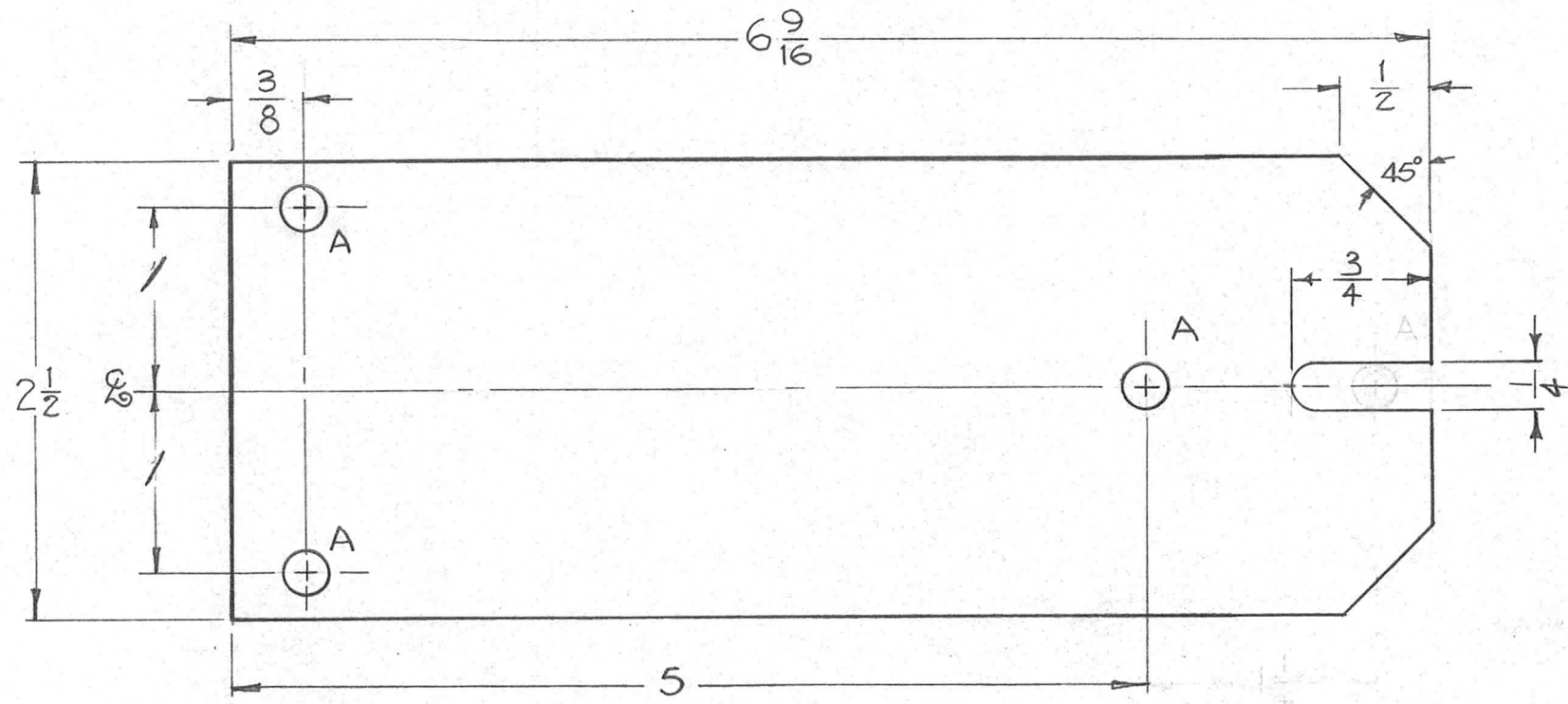
REQ. PER UNIT	USED ON			PX-533	D
	MODEL	ASS'Y. NO.	DATE		
1	GPT-40K	AX-ZZO	3-7-60		



ISSUE	ITEM	CHANGED FROM	DATE	CH. NO.	DRAFTS	CHECKER	ENG. APP.	REQ. ITEM	PART NO.	DESCRIPTION	SYMBOL						
D		-2D DIM 7/32 TO 3/8	8-18-70	19949	GE	W	W										
C		ADD PX533-3	9-22-66	16862	RME	JCS	RS		1/4" DIA. ROD 1/2" THK.	THE TECHNICAL MATERIEL CORP. MAMARONECK, NEW YORK							
B		PT/No CH ADDED	6-27-66	16461	WHD	JCS	JCS		STOCK SIZE								
A	1	5/32 & 3/4 ADDED	6-29-62	6859	R.T.	JHD	JCS		EPOXY	DISK, INSULATOR							
TOLERANCES								MATERIAL									
SCALE:								G 11		D. J. Mann		JCS					
DEC. DIM. ± FRAC. DIM. ± ANGULAR DIM. ±								TYPE & TEMPER		HEAT TREAT. SPEC.		DRAWN		CHECKED		FINAL APPROVAL	
MAXIMUM ALLOWABLE TOLERANCES HAVE BEEN DETERMINED AND ANY DEVIATIONS WILL BE CAUSE FOR REJECTION: REMOVE ALL BURRS AND SHARP EDGES												JCS		PX-533		D	
								FINISH & SPEC. NO.		ELEC. DES. APP		MECH. DES. APP					

REQ. PER UNIT	USED ON			PX-534	B
	MODEL	ASS'Y. NO.	DATE		
1	GPT-40K		3-7-60		

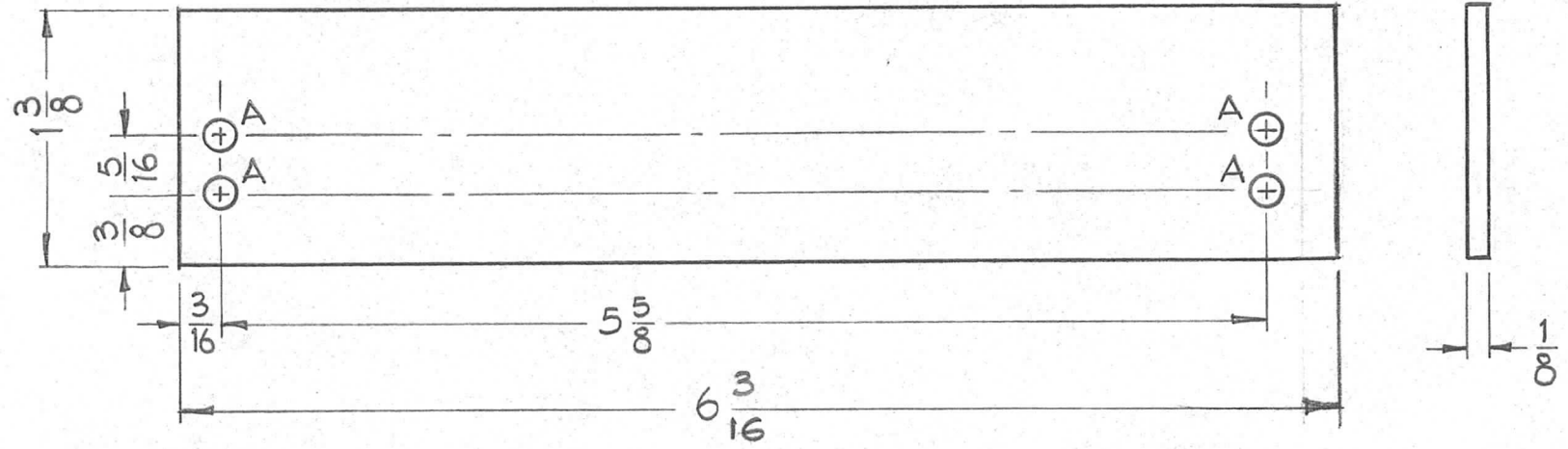
HOLES REQ.  
A ~ 15/64 (.234) DIA. 3



ISSUE	ITEM	CHANGED FROM	DATE	CH. NO.	DRAFTS	CHECKER	ENG. APP.	REQ.	ITEM	PART NO.	DESCRIPTION	SYMBOL	
										1/4" THK	THE TECHNICAL MATERIEL CORP. MAMARONECK, NEW YORK	MOUNT, CAPACITOR (P.A. DECK)	
										STOCK SIZE			
B	1	ØA Hole changed to 1/4 X 3/4 SLOT.	1-4-61	3856	mf	JCS	QB			SILICONE GLASS			
A	1	MAT. WAS EPOXY	3-28-60	1953	mf	JCS	QB			MATERIAL			
TOLERANCES			SCALE:					G7					
DEC. DIM. ± FRAC. DIM. ± ANGULAR DIM. ±			MAXIMUM ALLOWABLE TOLERANCES HAVE BEEN DETERMINED AND ANY DEVIATIONS WILL BE CAUSE FOR REJECTION: REMOVE ALL BURRS AND SHARP EDGES					TYPE & TEMPER	HEAT TREAT. SPEC.	DRAWN	CHECKED	FINAL APPROVAL	
												PX-534	B
								FINISH & SPEC. NO.	ELEC. DES. APP	MECH. DES. APP			

REQ. PER UNIT	USED ON			PX-535	A
	MODEL	ASS'Y. NO.	DATE		
1	GPT-40K	AP-102	3-15-60		

HOLES  
A ~ 11/64 (.171") D.      REQ'D  
4



**FUNGUS PROOFING PER  
TMC SPECIFICATION S-113**

\* NOTE:

S-113 APPLIED AFTER LETTERING

Ref: LD-713(1)

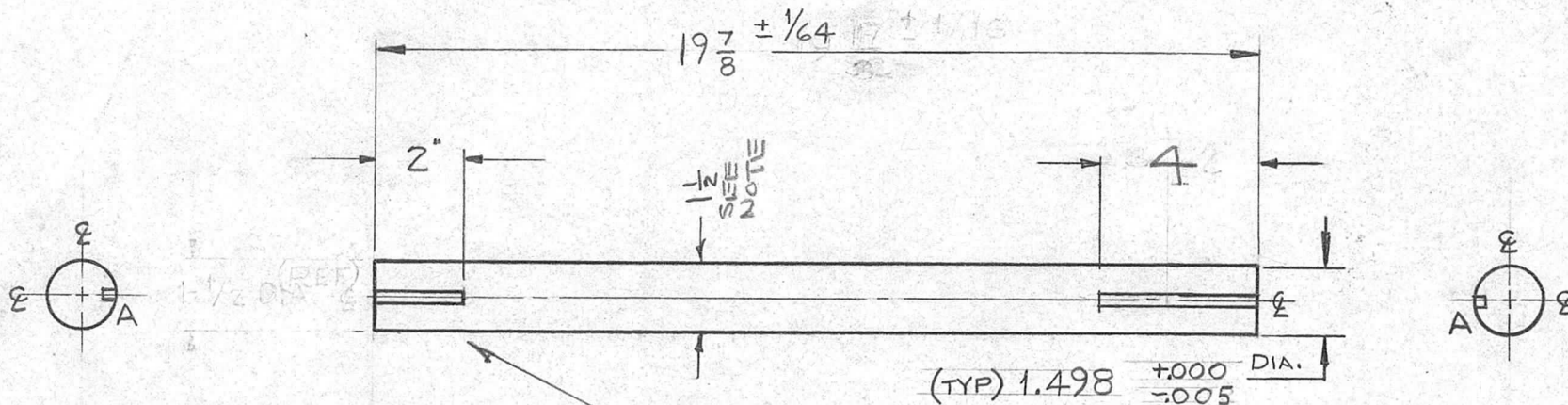
REQ.	ITEM	PART NO.	DESCRIPTION				SYMBOL
		1/8 THK.	THE TECHNICAL MATERIEL CORP.				
		STOCK SIZE	MAMARONECK, NEW YORK				
A	1	S-113 NOTE ADDED	INSULATOR, TERMINAL STRIP,				
		PHENOLIC	METER BOX CABLE				
		MATERIAL					
		XXXX	<i>D. J. Man</i>	<i>file</i>	<i>OB</i>		
ISSUE ITEM		CHANGED FROM	DATE	CH. NO.	DRAFTS	CHECKER	ENG. APP.
TOLERANCES			SCALE:				
DEC. DIM. ±			MAXIMUM ALLOWABLE TOLERANCES HAVE BEEN DETERMINED AND ANY DEVIATIONS WILL BE CAUSE FOR REJECTION: REMOVE ALL BURRS AND SHARP EDGES				
FRAC. DIM. ±							
ANGULAR DIM. ±							
		TYPE & TEMPER	HEAT TREAT. SPEC.	DRAWN	CHECKED	FINAL APPROVAL	
		NATURAL			<i>16</i>	PX-535	A
		FINISH & SPEC. NO.	ELEC. DES. APP	MECH. DES. APP			



A-.252 <sup>+0.002</sup> <sub>-0.000</sub> WIDE X .279 DEEP KEYWAY  
2 REQ.

REQ. PER UNIT	USED ON		
	MODEL	ASS'Y. NO.	DATE
1	GPT40K	AX-209	3-18-60

PX-538 G



NOTE

1.498 D. TO BE MACHINED FOR

LENGTH OF KEYWAYS. REMAINDER OF SHAFT TO BE STANDARD DIA. OF PURCHASED ITEM. BOTH KEYS TO BE IN LINE TO WITHIN ± 0.2°

G	1	KEYWAY WAS .281 DP TOL CHG ON DIA.	11.1.67	18582	HE	JLB	JLB
F	3	1/64 FRAC DIM. DELETED	10/26/60	3274	HE	JLB	JLB
F	2	(BOTH KEYS) NOTE ADDED					
F	1	DIM. 19 7/8 ± 1/64 WAS 19 17/32					
E	3	DIM 1.498 ± 0.002 ADDED	10/14/60	3058	HE	JLB	JLB
E	2	KEY WAY DIM. WAS 1/4 X 7/32					
E	1	NOTE ADDED					

D	1	19 17/32 WAS 19 1/8 4 WAS 3 1/2	8-2-60	2677	CS	JLB	JLB
C	1	19 1/8 DIA WAS 19 13/32	6-22-60	-	JLB	JLB	JLB
B	1	3 1/2 WAS 2"	4-19-60	2143	CS	JLB	JLB
A	1	MAT. WAS EPOXY	3-28-60	1954	JLB	JLB	JLB

ISSUE	ITEM	CHANGED FROM	DATE	CH. NO.	DRAFTS	CHECKER	ENG. APP.
TOLERANCES			SCALE: 1/4 (DO NOT SCALE)				
DEC. DIM. ±			MAXIMUM ALLOWABLE TOLERANCES HAVE BEEN DETERMINED AND ANY DEVIATIONS WILL BE CAUSE FOR REJECTION. REMOVE ALL BURRS AND SHARP EDGES				
FRAC. DIM. ±							
ANGULAR DIM. ±							

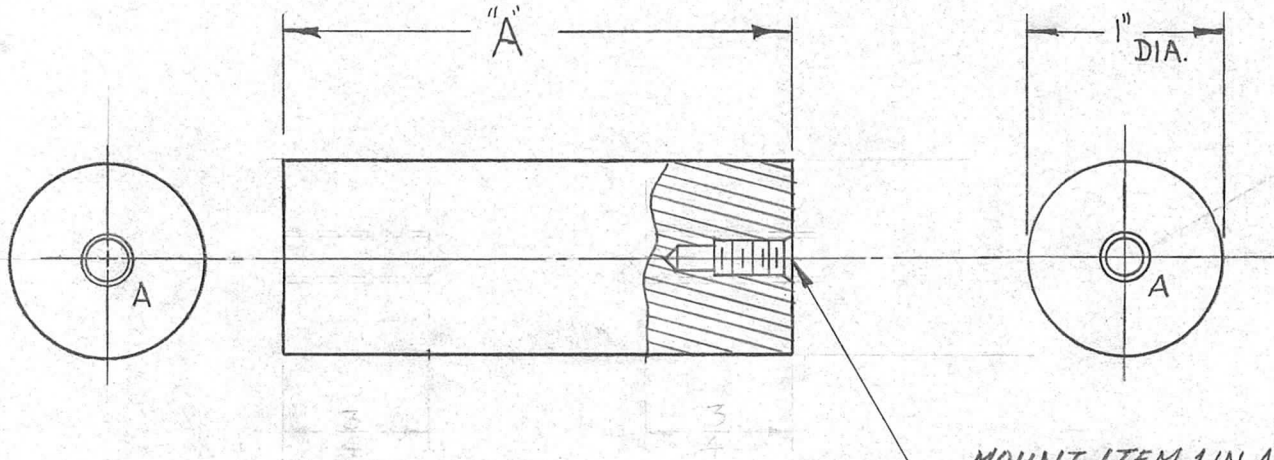
REQ.	ITEM	PART NO.	DESCRIPTION	SYMBOL
			1-1/2 DIA.	
			STOCK SIZE	
			SILICONE GLASS	
			MATERIAL	
			G-7	
			J.C. Biele	
			DRAWN	
			CHECKED	
			FINAL APPROVAL	
			PX-538	G
			FINISH & SPEC. NO.	
			ELEC. DES. APP	MECH. DES. APP

TMC PART NO.	LENGTH "A"	REQ. PER UNIT
PX 540 - 1	2 5/8	3
- 2	3	3
- 3	3 5/8	3

REQ. PER UNIT	USED ON			PX-540	B
	MODEL	ASS'Y. NO.	DATE		
3	GPT-40K	10K-MOD	3-28-60		

**HOLE LEGEND**

- A - HOLES TO BE MACHINED AS FOLLOWS: 2-REQ.
- 1- #5 (.203) DRILL TO .625 DP.
  - 2- 120° C SINK .24-.27 DIA.
  - 3- TAP .420 MIN. DEPTH, USE HELI COIL TAP #3 CPB
  - 4- MOUNT ITEM (1) 3/4 TO 1-1/2 PITCH BELOW SURFACE.
  - 5- BREAK OFF DRIVING TANG.



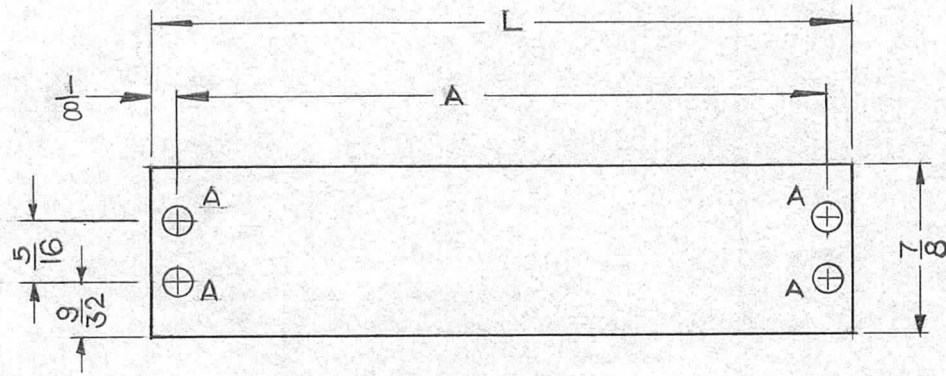
MOUNT ITEM 1 IN ALL "A" HOLES AS SHOWN AFTER FINISHING. ("A" DETAIL TYP.)

ISSUE	ITEM	CHANGED FROM	DATE	CH. NO.	DRAFTS	CHECKER	ENG. APP.	REQ.	ITEM	PART NO.	DESCRIPTION	SYMBOL			
								2	1	NT-139-SCI-20	INSERT, SCREW TYPE				
B	2	"A" HOLES WERE DR#TAP 10-24	8-14-62	7015	GS.	JW	16	1" THK.					THE TECHNICAL MATERIEL CORP. MAMARONECK, NEW YORK RF BAND SWITCH SPACERS		
	1	ITEM 1 ADDED						STOCK SIZE							
A	1	REINSTATED - WAS OBS. BY TE102AGR41R	9/3/60	-	16		16	EPOXY							
								MATERIAL							
TOLERANCES								SCALE:							
DEC. DIM. ±								MAXIMUM ALLOWABLE TOLERANCES HAVE BEEN DETERMINED AND ANY DEVIATIONS WILL BE CAUSE FOR REJECTION. REMOVE ALL BURRS AND SHARP EDGES							
FRAC. DIM. ± 1/64															
ANGULAR DIM. ±															
								G-10		DRAWN		CHECKED		FINAL APPROVAL	
								TYPE & TEMPER		HEATTREAT. SPEC.		MECH. DES. APP		PX-540 B	
								FINISH & SPEC. NO.		ELEC. DES. APP					

REQ. PER UNIT	USED ON		
	MODEL	ASS'Y. NO.	DATE
			3-30-60

PX-544 A

A ~ 9/64 D. HOLES 4 REQ.

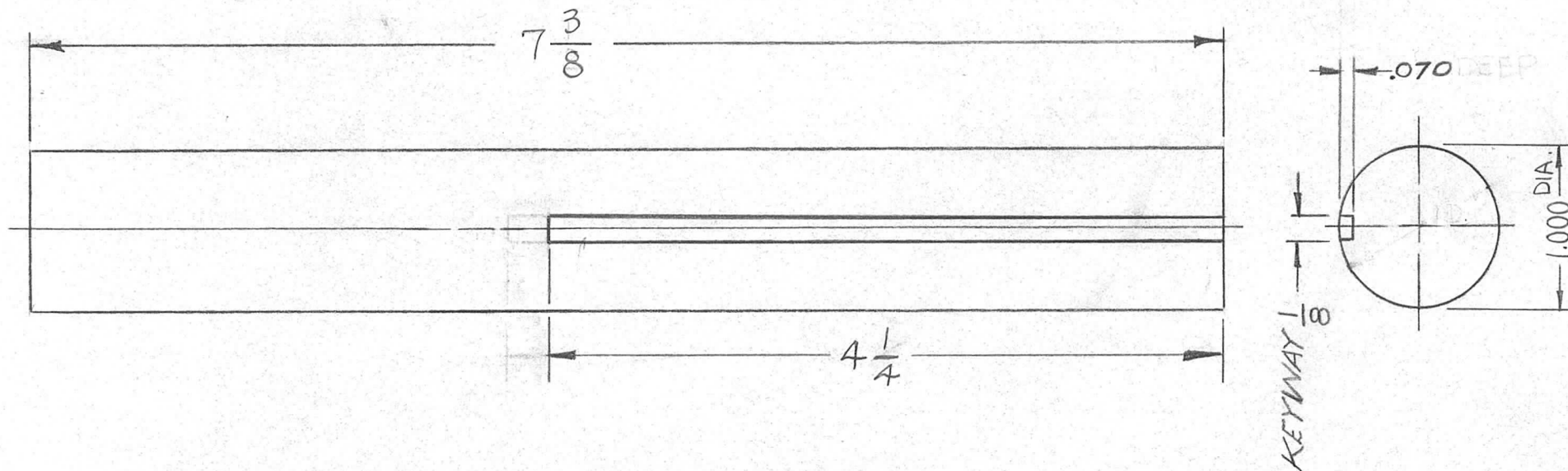


TMC #	"A"	"L"
PX-544-1	3/4	1
PX-544-2	1 1/8	1 3/8
PX -3	1 1/2	1 3/4
PX -4	1 7/8	2 1/8
PX 5	2 1/4	2 1/2
PX 6	2 5/8	2 7/8
PX 7	3	3 1/4
PX 8	3 3/8	3 5/8
PX 9	3 3/4	4
PX 10	4 1/8	4 3/8
PX 11	4 1/2	4 3/4
PX 12	4 7/8	5 1/8
PX 13	5 1/4	5 1/2
PX 14	5 5/8	5 7/8
PX 15	6	6 1/4
PX 16	6 3/8	6 5/8
PX 17	6 3/4	7
PX 18	7 1/8	7 3/8
PX 19	7 1/2	7 3/4
PX 20	7 7/8	8 1/8
PX 21	8 1/4	8 1/2

For TM-102

REQ.	ITEM	PART NO.	DESCRIPTION	SYMBOL
		1/8	THE TECHNICAL MATERIEL CORP.	
		STOCK SIZE	MAMARONECK, NEW YORK	
A	1	-1 NOS, REVISED	INSULATOR, TERMINAL, 1/8	
		PHENOLIC	STRIP BARRIER	
		MATERIAL		
		XXXXP		
		TYPE & TEMPER	DRAWN	CHECKED
		HEATTREAT. SPEC.		
		BLACK		
		FINISH & SPEC. NO.	ELEC. DES. APP	MECH. DES. APP
TOLERANCES		SCALE:	FINAL APPROVAL	
DEC. DIM. ±		MAXIMUM ALLOWABLE TOLERANCES HAVE BEEN DETERMINED AND ANY DEVIATIONS WILL BE CAUSE FOR REJECTION. REMOVE ALL BURRS AND SHARP EDGES		
FRAC. DIM. ± 1/64				
ANGULAR DIM. ±				
				PX-544 A

REQ. PER UNIT	USED ON			PX 545	C
	MODEL	ASS'Y. NO.	DATE		
1	GPT-40K	MODE SWITCH	3-30-60		



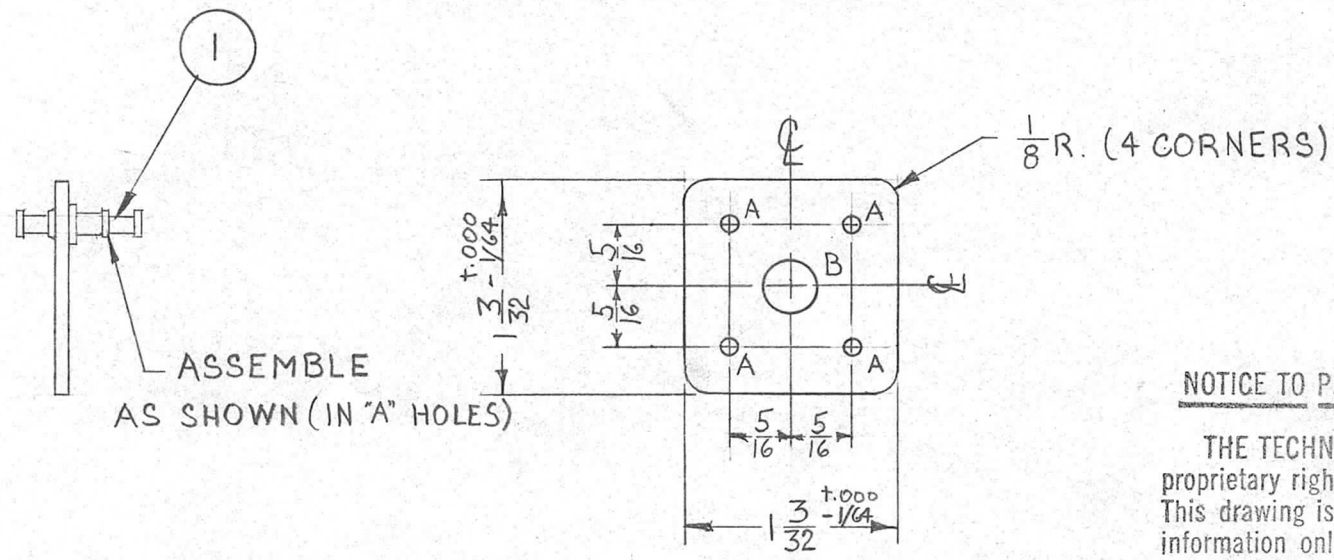
ISSUE	ITEM	CHANGED FROM	DATE	CH. NO.	DRAFTS	CHECKER	ENG. APP.	REQ. ITEM	PART NO.	DESCRIPTION	SYMBOL		
								AS NOTED		THE TECHNICAL MATERIEL CORP.			
								STOCK SIZE		MAMARONECK, NEW YORK			
C		1.000 WAS 1, TOL ±.005 ADDED	2-20-67	17830	NOA	OCB	OCB	EPOXY		SHAFT			
B	1	7-3/8 Dim. Was 7-1/2	3-7-61	4341	Dam	OCB	OCB						
A	1	1/8 x .070 KEYWAY ADDED	8-11-60	2744	FEU	OCB	OCB						
TOLERANCES								SCALE:					
DEC. DIM. ± .005								MAXIMUM ALLOWABLE TOLERANCES HAVE BEEN DETERMINED AND ANY DEVIATIONS WILL BE CAUSE FOR REJECTION.					
FRAC. DIM. ± 1/64								REMOVE ALL BURRS AND SHARP EDGES					
ANGULAR DIM. ±													
								G10		M.F.	OCB		
								TYPE & TEMPER	HEATTREAT. SPEC.	DRAWN	CHECKED	FINAL APPROVAL	
										ME		PX 545	C
								FINISH & SPEC. NO.	ELEC. DES. APP	MECH. DES. APP			

REQ. PER UNIT	USED ON		
	MODEL	ASS'Y. NO.	DATE
	CHL-1		4-7-60
4	GPR-92		10-29-62

PX-547

A ~ 5/64 (.078) D.  
 B ~ 17/64 (.265) D.

4 REQ  
 1 REQ.



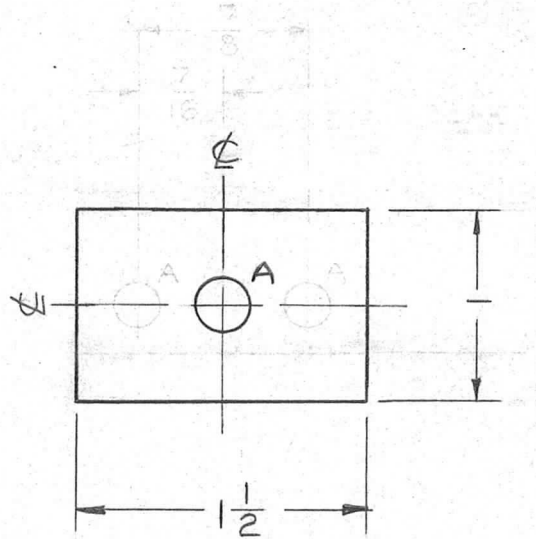
**NOTICE TO PERSONS RECEIVING THIS DRAWING**

THE TECHNICAL MATERIEL CORPORATION claims proprietary right in the material disclosed hereon. This drawing is issued in confidence for engineering information only and may not be reproduced or used to manufacture anything shown hereon without permission from THE TECHNICAL MATERIEL CORPORATION to the user. This drawing is loaned for mutual assistance and is subject to recall at any time.

Property of:  
 THE TECHNICAL MATERIEL CORPORATION  
 MAMARONECK, NEW YORK

REQ.	ITEM	PART NO.	DESCRIPTION	SYMBOL					
4	1	TE-168-4-B	TERM. MINIATURE						
		1/16	THE TECHNICAL MATERIEL CORP. MAMARONECK, NEW YORK						
		STOCK SIZE							
		PHENOLIC		TERM. BD. XFMR, 4 LUG					
		MATERIAL							
ISSUE	ITEM	CHANGED FROM	DATE	CH. NO.	DRAFTS	CHECKER	ENG. APP.		
TOLERANCES			SCALE:						
DEC. DIM. ±			MAXIMUM ALLOWABLE TOLERANCES HAVE BEEN DETERMINED AND ANY DEVIATIONS WILL BE CAUSE FOR REJECTION. REMOVE ALL BURRS AND SHARP EDGES						
FRAC. DIM. ± 1/64									
ANGULAR DIM. ±									
TYPE & TEMPER		HEATTREAT. SPEC.		DRAWN		CHECKED		FINAL APPROVAL	
XXXXP #		#		[Signature]		[Signature]		[Signature]	
FINISH & SPEC. NO.		ELEC. DES. APP		MECH. DES. APP		PX-547			

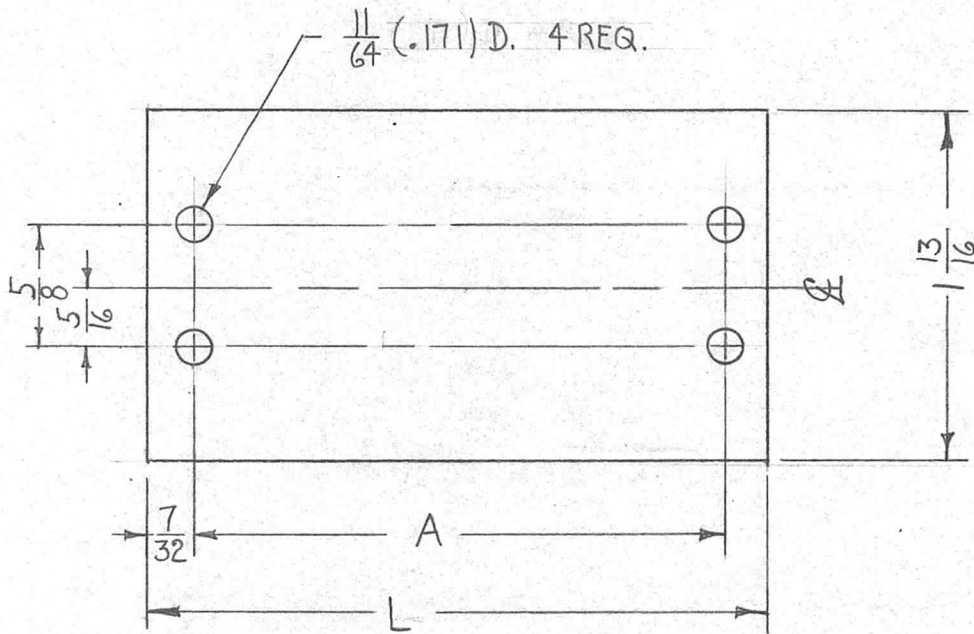
REQ. PER UNIT	USED ON			PX-550	B
	MODEL	ASS'Y. NO.	DATE		
15	GPT 40K	AS-120	4-22-60		



A ≈ 9/32 D. 1 REQ.

ISSUE	ITEM	CHANGED FROM	DATE	CH. NO.	DRAFTS	CHECKER	ENG. APP.	REQ.	ITEM	PART NO.	DESCRIPTION	SYMBOL					
										1/16 THK	THE TECHNICAL MATERIEL CORP. MAMARONECK, NEW YORK						
B	1	1/16 STOCK SIZE WAS 1/4	10-10-60	3043	REN					STOCK SIZE							
A	2	(2) "A" HOLES DELETED	8-3-60	2684	CY	JCB	DB			TEFLON	SPACER, WAFER SW.						
	1	(1) "A" HOLE 9/32 D. ADDED								MATERIAL	SUPPORT ROD						
TOLERANCES			SCALE: FULL														
DEC. DIM. ±			MAXIMUM ALLOWABLE TOLERANCES HAVE BEEN DETERMINED AND ANY DEVIATIONS WILL BE CAUSE FOR REJECTION: REMOVE ALL BURRS AND SHARP EDGES					TYPE & TEMPER		HEATTREAT. SPEC.		DRAWN		CHECKED		FINAL APPROVAL	
FRAC. DIM. ± 1/64								FINISH & SPEC. NO.		ELEC. DES. APP		MECH. DES. APP		PX-550		B	
ANGULAR DIM. ±																	

REQ. PER UNIT	USED ON			PX-553	A
	MODEL	ASS'Y. NO.	DATE		
	GPT-40K				



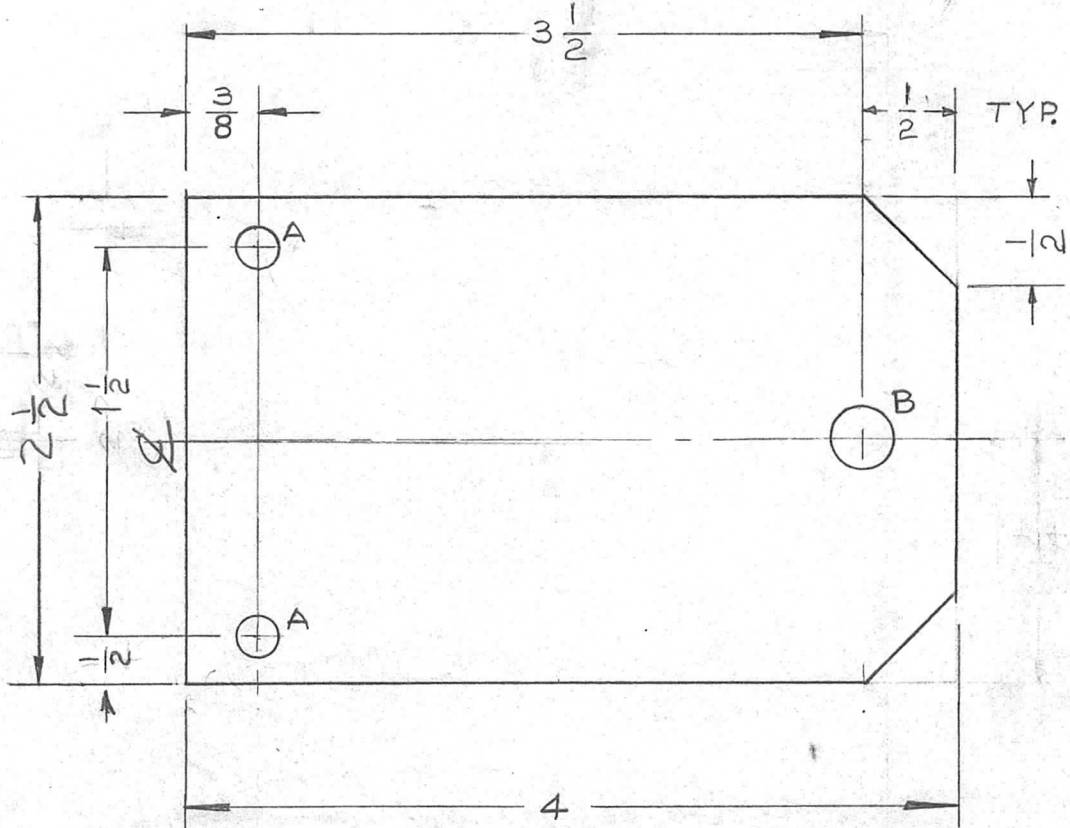
TMC #	DIM. A	DIM. L
PX-553-1	1 3/8	1 13/16
-2	2 1/16	2 1/2
-3	2 3/4	3 3/16
-4	3 7/16	3 7/8
-5	4 1/8	4 9/16
-6	4 13/16	5 1/4
-7	5 1/2	5 15/16
-8	6 3/16	6 5/8
-9	6 7/8	7 5/16
-10	7 9/16	8

FOR - TM-118

\* FUNGUS PROOFING PER  
TMC SPECIFICATION S-113

REQ.	ITEM	PART NO.	DESCRIPTION	SYMBOL							
		1/8	THE TECHNICAL MATERIEL CORP.								
		STOCK SIZE	MAMARONECK, NEW YORK								
A	SI13 ADDED	PHENOLIC	INSULATOR, TERMINAL STRIP								
ISSUE	ITEM	CHANGED FROM	DATE	CH. NO.	DRAFTS	CHECKER	ENG. APP.				
			4/13/64	11186	AM	JL	PP				
TOLERANCES			SCALE:								
DEC. DIM. ±			MAXIMUM ALLOWABLE TOLERANCES HAVE BEEN DETERMINED AND ANY DEVIATIONS WILL BE CAUSE FOR REJECTION. REMOVE ALL BURRS AND SHARP EDGES								
FRAC. DIM. ± 1/64											
ANGULAR DIM. ±											
XXXP		TYPE & TEMPER		HEAT TREAT. SPEC.		DRAWN		CHECKED		FINAL APPROVAL	
BLACK *						ME		PP		PX-553	
FINISH & SPEC. NO.		ELEC. DES. APP		MECH. DES. APP						A	

REQ. PER UNIT	USED ON			PX-551	A
	MODEL	ASS'Y. NO.	DATE		
1	GPT-40K	AX-209	4-22-60		



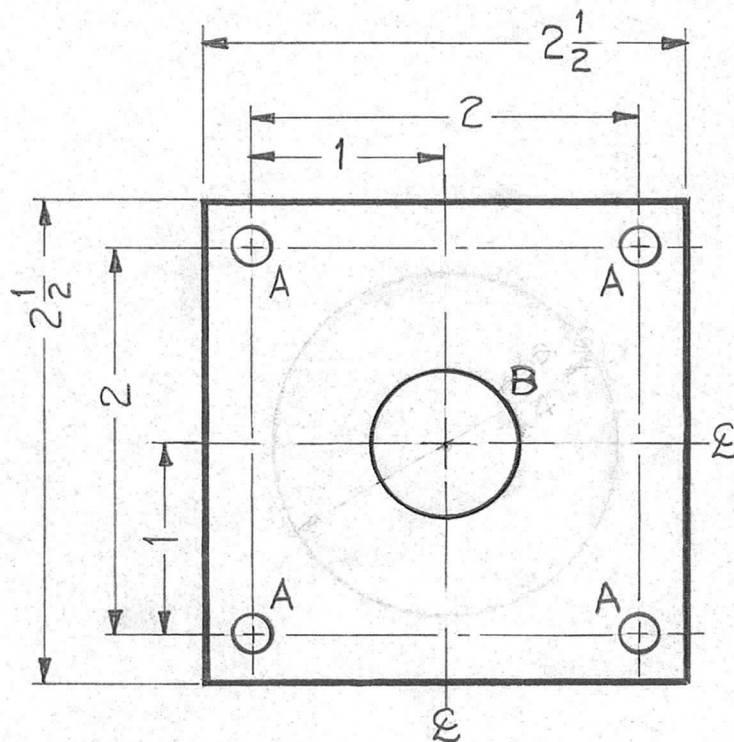
A ✓ 13/64 D. 2 REQ.  
 B ✓ 5/16 D. 1 REQ.

REF. LD-790(1)

REQ.	ITEM	PART NO.	DESCRIPTION				SYMBOL		
		1/4 THICK	THE TECHNICAL MATERIEL CORP.						
		STOCK SIZE	MAMARONECK, NEW YORK						
A	1	SILICONE GLASS	SUPPORT, COIL CAPACITOR						
		MATERIAL	BOTTOM P.A. DECK						
ISSUE	ITEM	CHANGED FROM	DATE	CH. NO.	DRAFTS	CHECKER	ENG. APP.		
			10-7-60	3041	RUU				
TOLERANCES			SCALE: FULL						
DEC. DIM. ±			MAXIMUM ALLOWABLE TOLERANCES HAVE BEEN DETERMINED AND ANY DEVIATIONS WILL BE CAUSE FOR REJECTION. REMOVE ALL BURRS AND SHARP EDGES						
FRAC. DIM. ± 1/64									
ANGULAR DIM. ±									
		GT	TYPE & TEMPER		HEATTREAT. SPEC.		DRAWN	CHECKED	FINAL APPROVAL
			FINISH & SPEC. NO.		ELEC. DES. APP		MECH. DES. APP		PX-551 A



REQ. PER UNIT	USED ON			PX-555	A
	MODEL	ASS'Y. NO.	DATE		
2	GPT-40K	AX-209	4-26-60		



HOLES

A ~ 13/64 (.203) DIA.

B ~ 3/4 (.750) DIA.

REQ'D

4

1

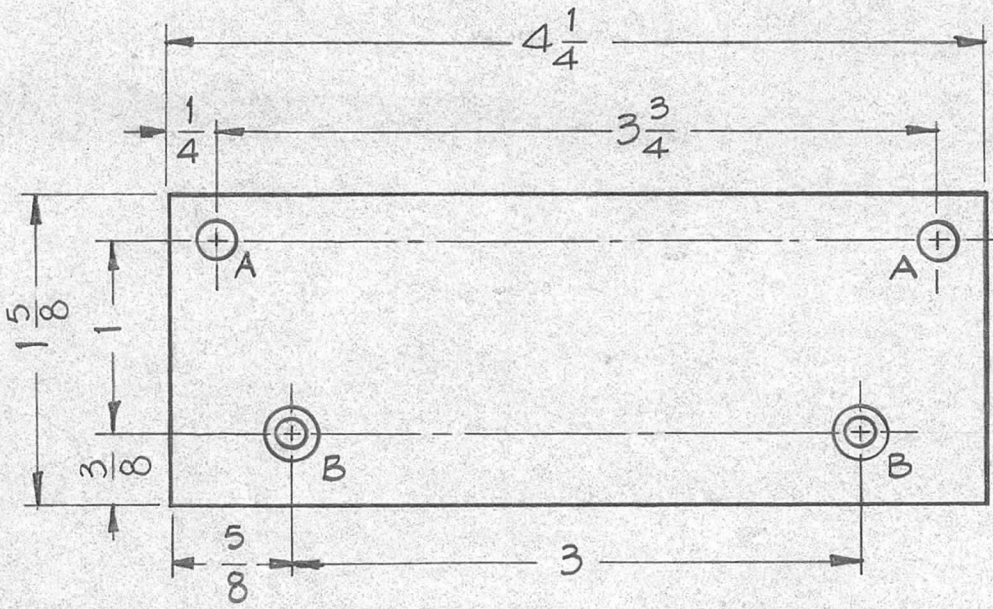
REF ~ TMC DWG NO. LD-792 (1)

ISSUE	ITEM	CHANGED FROM	DATE	CH. NO.	DRAFTS	CHECKER	ENG. APP.	REQ.	ITEM	PART NO.	DESCRIPTION	SYMBOL
											THE TECHNICAL MATERIEL CORP. MAMARONECK, NEW YORK	
										1/4 STOCK SIZE	BOARD, CAPACITOR MOUNT (PA DECK)	
A	1	"B" HOLE WAS 13/4 D.	6-21-60	2527	CS	JCB	DB			SILICONE GLASS		
										MATERIAL		
										G7		
										TYPE & TEMPER	DRAWN	CHECKED
										HEAT TREAT. SPEC.		FINAL APPROVAL
										FINISH & SPEC. NO.	ELEC. DES. APP	MECH. DES. APP
												PX-555
												A

DEC. DIM. ±  
FRAC. DIM. ± 1/64  
ANGULAR DIM. ±

SCALE:  
MAXIMUM ALLOWABLE TOLERANCES HAVE BEEN DETERMINED AND ANY DEVIATIONS WILL BE CAUSE FOR REJECTION. REMOVE ALL BURRS AND SHARP EDGES

REQ. PER UNIT	USED ON			PX-556	B
	MODEL	ASS'Y. NO.	DATE		
1	GPT-40K	AX-209	4-26-60		



HOLES REQ'D

A ~ 13/64 (.203) DIA. 2

B ~ C5ink for 8-32 F.H.S. 2

\* FUNGUS PROOFING PER TMC SPECIFICATION S-113

ISSUE	ITEM	CHANGED FROM	DATE	CH. NO.	DRAFTS	CHECKER	ENG. APP.	REQ.	ITEM	PART NO.	DESCRIPTION	SYMBOL	
									1/8		THE TECHNICAL MATERIEL CORP.		
									STOCK SIZE		MAMARONECK, NEW YORK		
B		SI13 ADDED	4/13/64	11186	AM	Jde	DD				CAPACITOR MOUNT		
A	1	MAT. WAS SILICONE GLASS TYPE 6 TEMPER 67	10-17-60	3203	RN		DD		PHENOLIC		(WRAP-A-ROUND)		
									MATERIAL				
									XXXXP		DJ Mar JCSiele	DD	
									TYPE & TEMPER	HEAT TREAT. SPEC.	DRAWN	CHECKED	FINAL APPROVAL
									*				PX-556 B
									FINISH & SPEC. NO.		ELEC. DES. APP	MECH. DES. APP	

DEC. DIM. ±  
 FRAC. DIM. ±  
 ANGULAR DIM. ±

SCALE:  
 MAXIMUM ALLOWABLE TOLERANCES HAVE BEEN DETERMINED AND ANY DEVIATIONS WILL BE CAUSE FOR REJECTION. REMOVE ALL BURRS AND SHARP EDGES

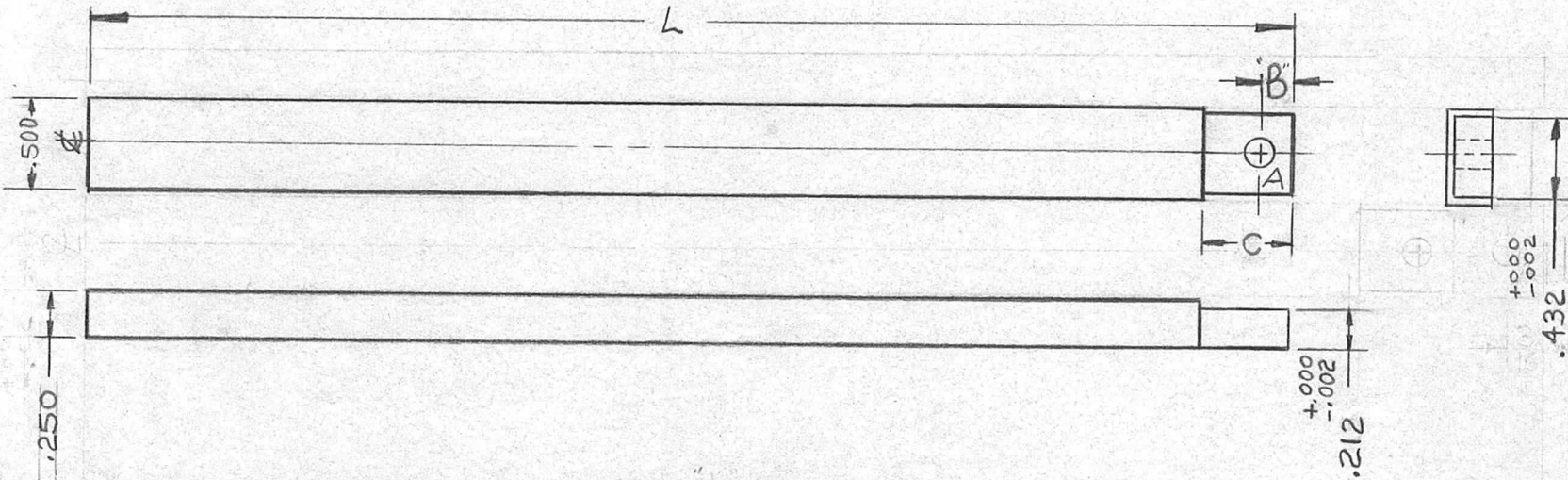
REQ. PER UNIT	USED ON		
	MODEL	ASS'Y. NO.	DATE
	CHG-1		5-6-60
	CHG-2		5-23-61

PX-557

H

TMC PART #	"L"	"B"	"C"	USED ON	AMOUNT REQ
PX-557-1	5 3/4	3/16	9/16	CHG-1	1
PX-557-2	1 1/2	1/8	9/32	CHG-1,2	1
PX-557-3	5 1/4	3/16	9/16	CHG-2	1

A- 9/64 (.140) D. 1 REQ.

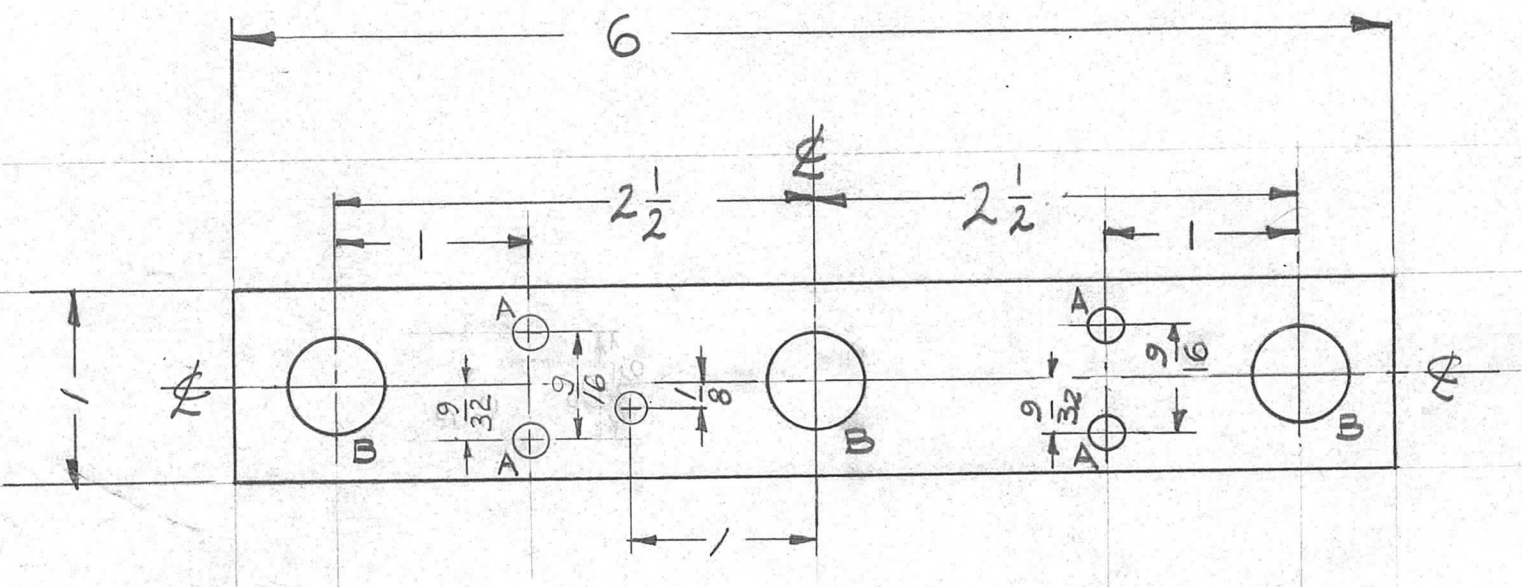


H	1	-2" B was 1 3/2" C was 5/16"	11-30-65	15250	H.V.V.	QCB	
G		CLERICAL CHANGE	8-24-64		LSB	@	
F	2	COLUMN "C" ADDED	4-15-64	11233	LSB	Wde	T.K.
	1	9/16 DELETED					
E	1	Added PX-557-2	5/23/61	4947	DOM	QCB	S.S.
D	3	9/16 DIM. WAS 1/2"					
	2	.212 DIM. WAS .215	3-2-61	4316	W.A.F.	QCB	
	1	.432 DIM. WAS .437					
C	2	DIM "B" WAS 3/16"	11-28/60	3599	DOM	QCB	
	1	DIM 1/2 WAS 2 1/2" (Chart "L")					
B	1	"L" DIM WAS 5" (PX-571-1)	11-16-60	3456	RU	QCB	
A	1	SHOULDER ADDED	9-13-60	~	Rizzo	QCB	

REQ.	ITEM	PART NO.	DESCRIPTION	SYMBOL
		1/4 X 1/2 X 1/2	THE TECHNICAL MATERIEL CORP.	
		STOCK SIZE	MAMARONECK, NEW YORK	
		SILICONE GLASS	SWITCH SHAFT	
		MATERIAL		
		G7		
		TYPE & TEMPER	DRAWN	CHECKED
		HEATTREAT. SPEC.		FINAL APPROVAL
		FINISH & SPEC. NO.	ELEC. DES. APP	MECH. DES. APP

ISSUE	ITEM	CHANGED FROM	DATE	CH. NO.	DRAFTS	CHECKER	ENG. APP.
TOLERANCES		SCALE:					
DEC. DIM. ± .005		MAXIMUM ALLOWABLE TOLERANCES HAVE BEEN DETERMINED AND ANY DEVIATIONS WILL BE CAUSE FOR REJECTION.					
FRAC. DIM. ± 1/64		REMOVE ALL BURRS AND SHARP EDGES					
ANGULAR DIM. ±							

REQ. PER UNIT	USED ON			PX-559	C
	MODEL	ASSY. NO.	DATE		
1	GPT-40K	AR-116	5-16-60		

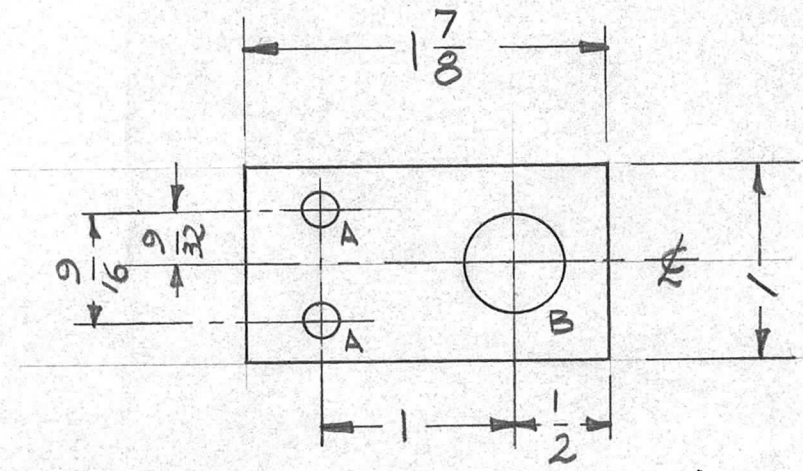


A ~ 11/64 (171) D. 5  
 B ~ 13/32 DIA. 3

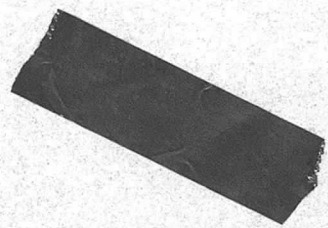
\* FUNGUS PROOFING PER TMC SPECIFICATION S-113

ISSUE	ITEM	CHANGED FROM	DATE	CH. NO.	DRAFTS	CHECKER	ENG. APP.	REQ.	ITEM	PART NO.	DESCRIPTION	SYMBOL							
C		ADD "A" HOLE (1)	3-6-67	17917	L.A.K.	<i>JLB</i>	<i>29</i>			3/16	THE TECHNICAL MATERIEL CORP. MAMARONECK, NEW YORK								
B		S113 ADDED	4/13/64	11186	AM	<i>file</i>	<i>28</i>			STOCK SIZE	INSULATOR, POTENTIOMETER								
A	2	MAT. WAS SILICONE RESIN	9-9-60	2929	CS	<i>file</i>	<i>file</i>			PHENOLIC XXXP	RELAY PANEL								
	1	9/16 DIM. WAS 9/64								MATERIAL									
TOLERANCES			SCALE: FULL					XXXP		<i>JOBILLO</i>		<i>ARB</i>							
DEC. DIM. ±			MAXIMUM ALLOWABLE TOLERANCES HAVE BEEN DETERMINED AND ANY DEVIATIONS WILL BE CAUSE FOR REJECTION. REMOVE ALL BURRS AND SHARP EDGES					TYPE & TEMPER		HEAT TREAT. SPEC.		DRAWN		CHECKED		FINAL APPROVAL			
FRAC. DIM. ±								NATURAL*											
ANGULAR DIM. ±								1/64		FINISH & SPEC. NO.		ELEC. DES. APP		MECH. DES. APP		PX-559		C	

REQ. PER UNIT	USED ON			PX-560	B
	MODEL	ASS'Y. NO.	DATE		
1	GPT-40K	AR-116	5-16-60		



A - 11/64 (.171) D 2  
 B - 13/32 DIA. 1



\* FUNGUS PROOFING PER TMC SPECIFICATION S-113

REQ.	ITEM	PART NO.	DESCRIPTION				SYMBOL		
		3/16	THE TECHNICAL MATERIEL CORP.						
		STOCK SIZE	MAMARONECK, NEW YORK						
B		PHENOLIC	INSULATOR, POTENTIOMETER						
A	1	MATERIAL	RELAY PANEL						
ISSUE	ITEM	CHANGED FROM	DATE	CH. NO.	DRAFTS	CHECKER	ENG. APP.		
		S113 ADDED	4/13/64	11186	AM	JDE	WR		
		MATERIAL WAS SILICONE RESIN, G7	10/11/60	3054					
TOLERANCES			SCALE: FULL						
DEC. DIM. ±			MAXIMUM ALLOWABLE TOLERANCES HAVE BEEN DETERMINED AND ANY DEVIATIONS WILL BE CAUSE FOR REJECTION. REMOVE ALL BURRS AND SHARP EDGES						
FRAC. DIM. ±									
ANGULAR DIM. ±									
			TYPE & TEMPER		HEAT TREAT. SPEC.		DRAWN	CHECKED	FINAL APPROVAL
			* FINISH & SPEC. NO.		ELEC. DES. APP		MECH. DES. APP		
					JORBILLO		JDE	WR	PX-560
									B

REQ. PER UNIT	USED ON		
	MODEL	ASS'Y. NO.	DATE
6	GPT-40K	AX-228	6-9-60

PX-562 B

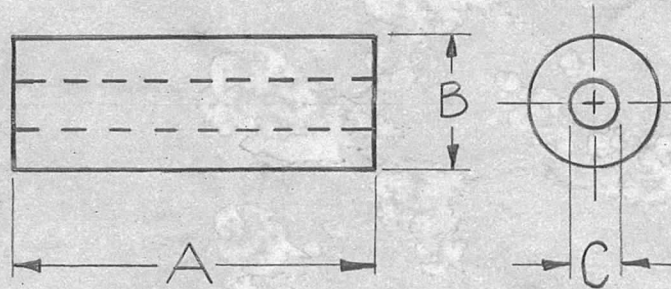
TMC PARTNUMBER	A	B	C
PX-562-1	1 7/8	45/64	1/4
PX-562-2	1 3/8	45/64	1/4

NOTICE TO PERSONS RECEIVING THIS DRAWING

THE TECHNICAL MATERIEL CORPORATION claims proprietary right in the material disclosed hereon. This drawing is issued in confidence for engineering information only and may not be reproduced or used to manufacture anything shown hereon without permission from THE TECHNICAL MATERIEL CORPORATION to the user. This drawing is loaned for mutual assistance and is subject to recall at any time.

Property of:

THE TECHNICAL MATERIEL CORPORATION  
MAMARONECK, NEW YORK

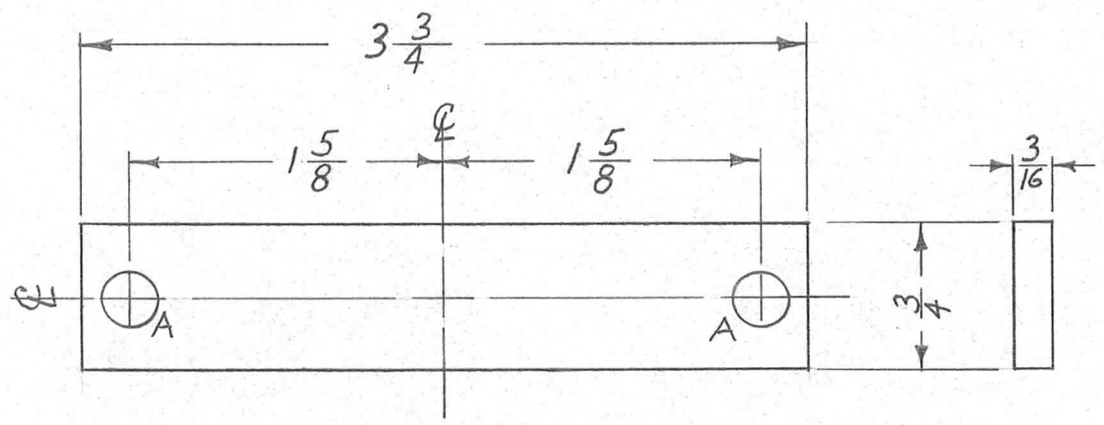


ISSUE	ITEM	CHANGED FROM	DATE	CH. NO.	DRAFTS	CHECKER	ENG. APP.	REQ.	ITEM	PART NO.	DESCRIPTION	SYMBOL					
											THE TECHNICAL MATERIEL CORP. MAMARONECK, NEW YORK BUSHING, TEFLON	B					
B	1	ON PX-562-1 #2 DIM "B" WAS 11/16	3-7-63	8425	<i>[Signature]</i>	<i>[Signature]</i>	<i>[Signature]</i>										
A	1	PX562-2 Added	8-9-60	*	<i>[Signature]</i>	<i>[Signature]</i>	<i>[Signature]</i>										
TOLERANCES			SCALE:					TYPE & TEMPER		HEATTREAT. SPEC.		DRAWN		CHECKED		FINAL APPROVAL	
DEC. DIM. ±			MAXIMUM ALLOWABLE TOLERANCES HAVE BEEN DETERMINED AND ANY DEVIATIONS WILL BE CAUSE FOR REJECTION. REMOVE ALL BURRS AND SHARP EDGES									<i>[Signature]</i>		PX-562		B	
FRAC. DIM. ±																	
ANGULAR DIM. ±																	
								FINISH & SPEC. NO.		ELEC. DES. APP		MECH. DES. APP					

REQ. PER UNIT	USED ON			PX-566	B.
	MODEL	ASS'Y. NO.	DATE		
1	GPT-40K	AP-103	6-29-60		

A -  $\frac{9}{32}$  D.

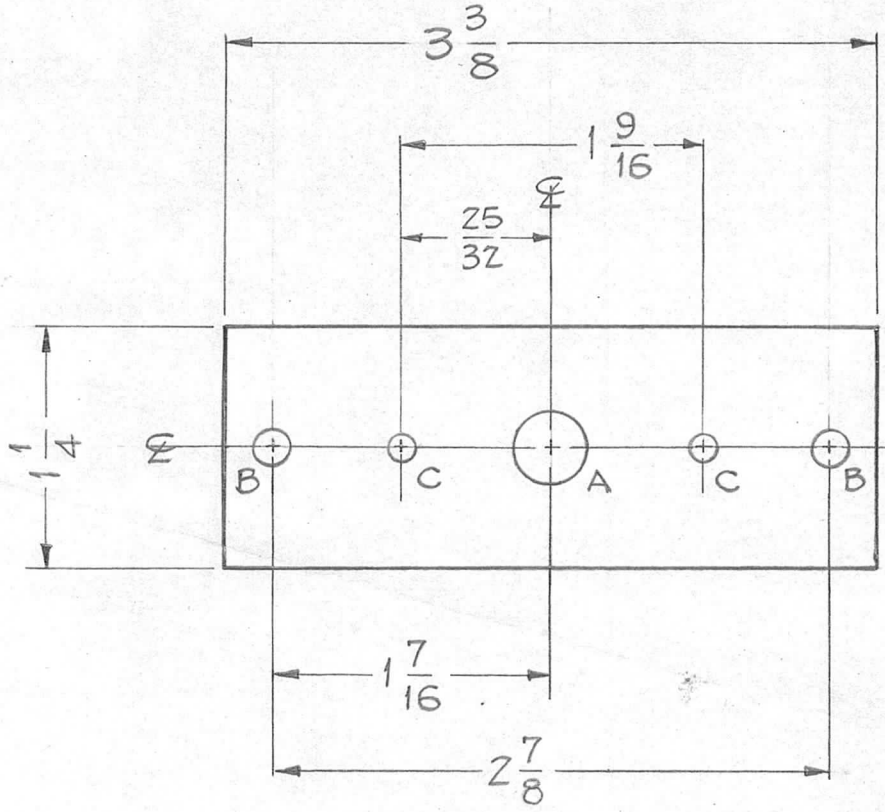
2 REQ.



\* FUNGUS PROOFING PER TMC SPECIFICATION S-113

REQ.	ITEM	PART NO.	DESCRIPTION				SYMBOL
		$\frac{3}{16}$ THK.	THE TECHNICAL MATERIEL CORP.				
		STOCK SIZE	MAMARONECK, NEW YORK				
B	ON FINISH BLOCK XXXPwgs 67	6-23-65 14318	RV.V.	JCB	DB		
A	SI13 ADDED	4/13/64 11186	A.M.	JCB	DB		
ISSUE	ITEM	CHANGED FROM	DATE	CH. NO.	DRAFTS	CHECKER	ENG. APP.
TOLERANCES			SCALE: FULL				
DEC. DIM. $\pm$			MAXIMUM ALLOWABLE TOLERANCES HAVE BEEN DETERMINED AND ANY DEVIATIONS WILL BE CAUSE FOR REJECTION. REMOVE ALL BURRS AND SHARP EDGES				
FRAC. DIM. $\pm$ 1/64							
ANGULAR DIM. $\pm$							
TYPE & TEMPER		HEAT TREAT. SPEC.	DRAWN	CHECKED	FINAL APPROVAL		
XXXP		*	JCB	JCB	DB		
FINISH & SPEC. NO.		ELEC. DES. APP	MECH. DES. APP	PX-566			
				B			

REQ. PER. UNIT	USED ON			PX-567	A
	MODEL	ASSY. NO.	DATE		
1	GPT-40K	MODE SW.	7-1-60		



HOLES ~

A -  $\frac{3}{8}$  DIA. 1 REQ.

B -  $\frac{3}{16}$  DIA. 2 REQ.

C -  $\frac{9}{64}$  DIA. 2 REQ.

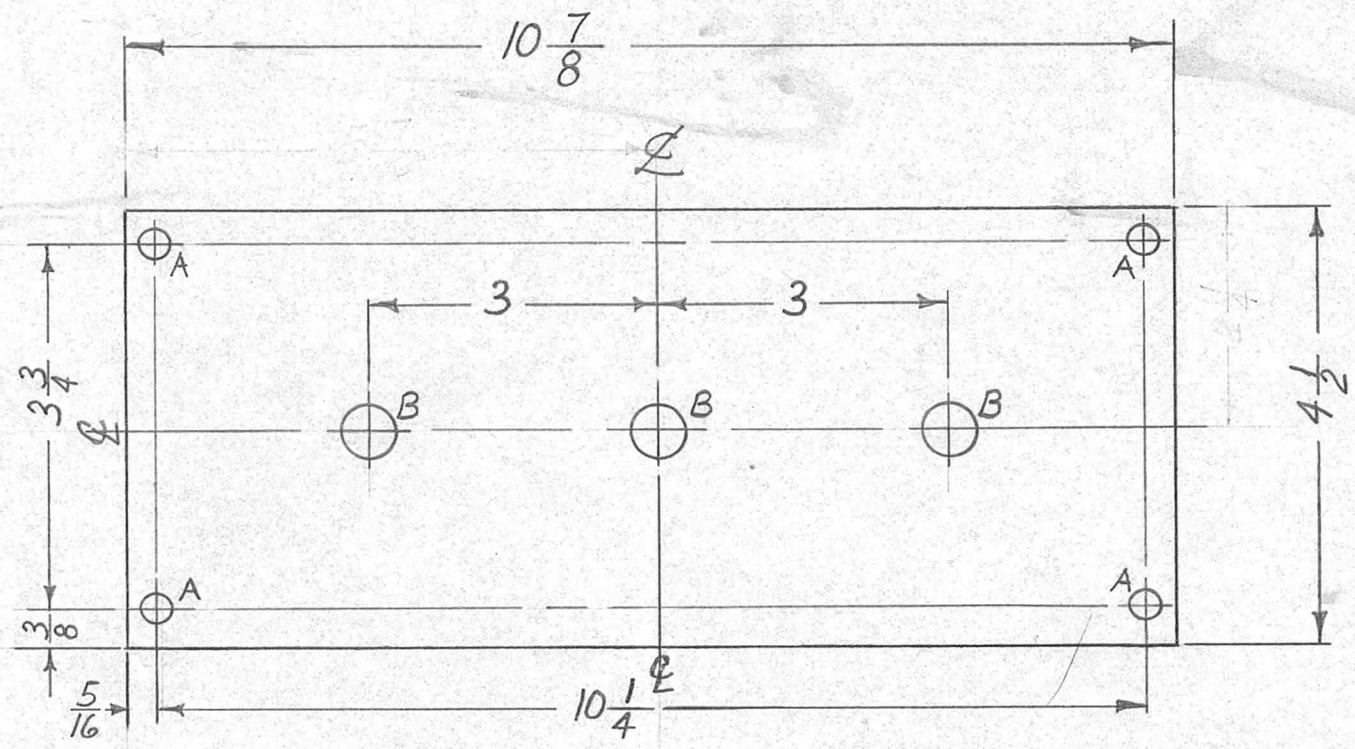
\* FUNGUS PROOFING PER TMC SPECIFICATION S-113

REQ.	ITEM	PART NO.	DESCRIPTION		SYMBOL							
		1/8" THICK	THE TECHNICAL MATERIEL CORP.									
		STOCK SIZE	MAMARONECK, NEW YORK									
A	SI13 ADDED	PHENOLIC	INSULATOR,									
		MATERIAL	WAFER SWITCH									
ISSUE	ITEM	CHANGED FROM	DATE	CH. NO.	DRAFTS	CHECKER	ENG. APP.	XXXP	J.C. Biele			
TOLERANCES			SCALE: FULL-DO NOT SCALE-									
DEC. DIM. ±			MAXIMUM ALLOWABLE TOLERANCES HAVE BEEN DETERMINED AND ANY DEVIATIONS WILL BE CAUSE FOR REJECTION.									
FRAC. DIM. ± 1/64			REMOVE ALL BURRS AND SHARP EDGES									
ANGULAR DIM. ±												
		NATURAL *	TYPE & TEMPER		HEAT TREAT. SPEC.		DRAWN		CHECKED		FINAL APPROVAL	
		FINISH & SPEC. NO.	ELEC. DES. APP		MECH. DES. APP						PX-567 A	



REQ. PER UNIT	USED ON			PX-568	B
	MODEL	ASS'Y. NO.	DATE		
1	GPT-40K	AP-102	6-30-60		

A -  $\frac{5}{16}$  D. 4 REQ.  
 B -  $\frac{9}{16}$  D. 3 REQ.



REF: LD1200

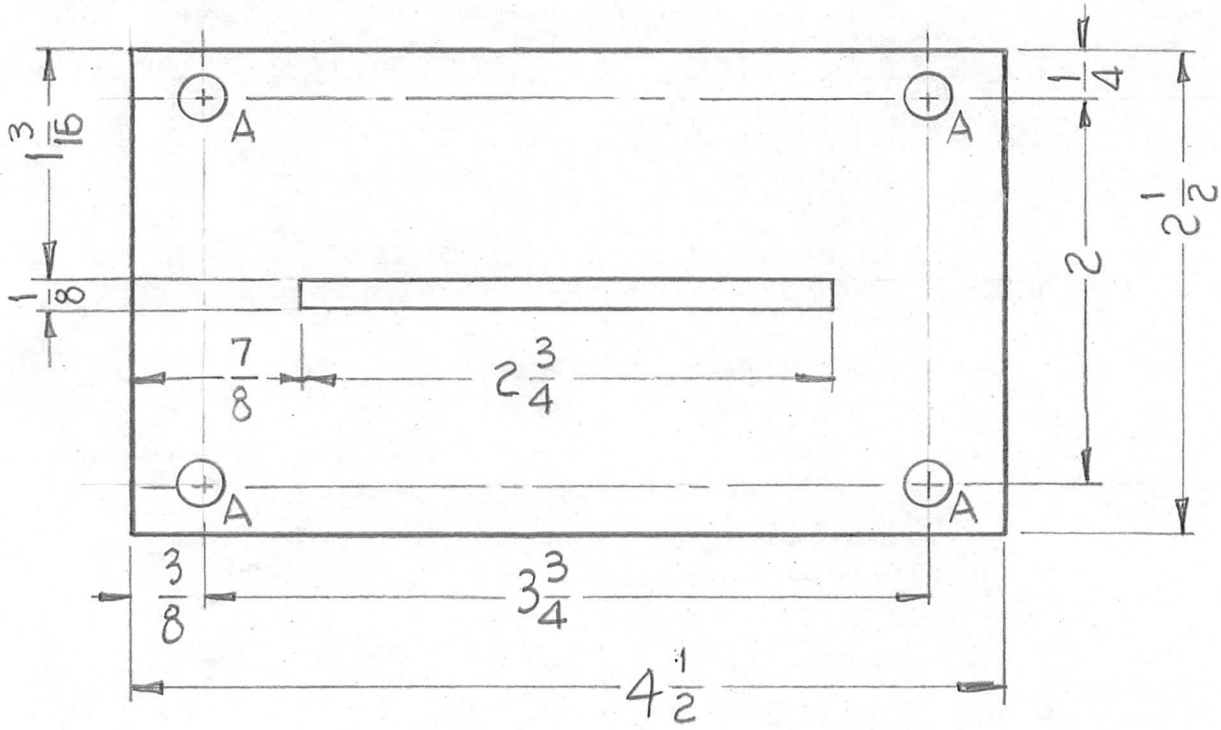
\* FUNGUS PROOFING PER TMC SPECIFICATION S-113

REQ.	ITEM	PART NO.	DESCRIPTION				SYMBOL
		$\frac{1}{2}$	THE TECHNICAL MATERIEL CORP.				
		STOCK SIZE	MAMARONECK, NEW YORK				
B	1	REF: # ADDED	BOARD, LINE FEED BASE				
A		S113 ADDED					
ISSUE	ITEM	CHANGED FROM	DATE	CH. NO.	DRAFTS	CHECKER	ENG. APP.
			7.17.64	111867	MB	@	203
			4/13/64	11186	AM	file	208
TOLERANCES			SCALE: $\frac{1}{2}$				
DEC. DIM. $\pm$			MAXIMUM ALLOWABLE TOLERANCES HAVE BEEN DETERMINED AND ANY DEVIATIONS WILL BE CAUSE FOR REJECTION. REMOVE ALL BURRS AND SHARP EDGES				
FRAC. DIM. $\pm$ $\frac{1}{64}$							
ANGULAR DIM. $\pm$							
TYPE & TEMPER		HEAT TREAT. SPEC.	DRAWN	CHECKED	FINAL APPROVAL		
NATURAL *					PX-568 B		
FINISH & SPEC. NO.		ELEC. DES. APP	MECH. DES. APP				

REQ. PER. UNIT	USED ON			PX-570
	MODEL	ASSY. NO.	DATE	
1	GPT-40K	AX-209	6-30-60	

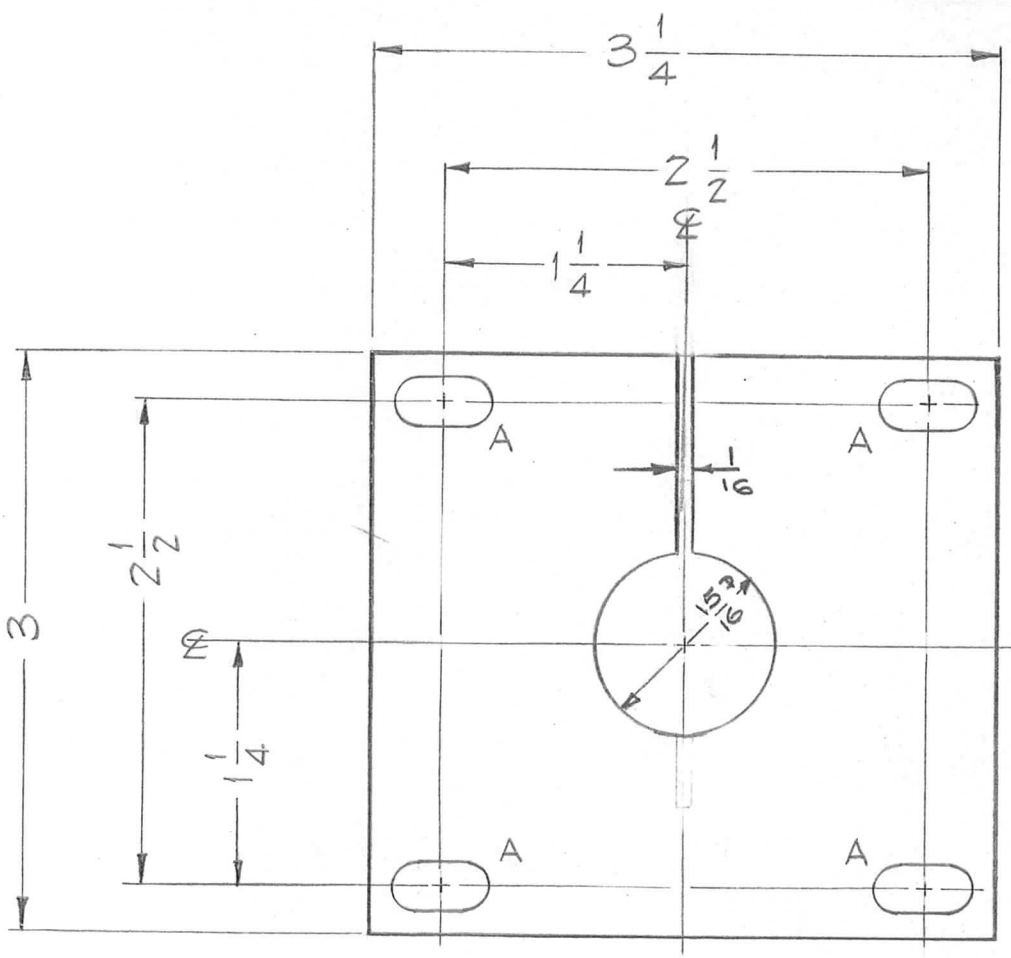
HOLES  
A ~ 1/4D.

REQ'D  
4



REQ.	ITEM	PART NO.	DESCRIPTION			SYMBOL								
		3/16	THE TECHNICAL MATERIEL CORP.											
		STOCK SIZE	MAMARONECK, NEW YORK											
		TEFLON	INSULATOR CONNECTOR											
		MATERIAL	CAP & TUBE											
ISSUE	ITEM	CHANGED FROM	DATE	CH. NO.	DRAFTS	CHECKER	ENG. APP.							
TOLERANCES			SCALE:											
DEC. DIM. ±			MAXIMUM ALLOWABLE TOLERANCES HAVE BEEN DETERMINED AND ANY DEVIATIONS WILL BE CAUSE FOR REJECTION.											
FRAC. DIM. ±			REMOVE ALL BURRS AND SHARP EDGES											
ANGULAR DIM. ±			TYPE & TEMPER			HEAT TREAT. SPEC.			DRAWN		CHECKED		FINAL APPROVAL	
			FINISH & SPEC. NO.			ELEC. DES. APP		MECH. DES. APP		PX-570				

REQ. PER. UNIT	USED ON			PX-571	A
	MODEL	ASSY. NO.	DATE		
1	GPT40K	AX-209	7-1-60		

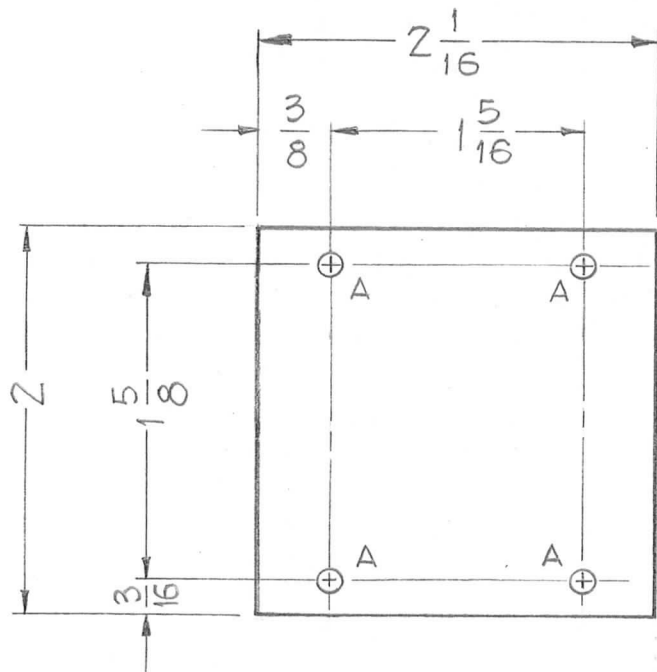


A -  $\frac{11}{64} \times \frac{11}{32}$  SLOTS 4 REQ.

B DETAIL - 1 REQ.

REQ.	ITEM	PART NO.	DESCRIPTION				SYMBOL
		.081 THICK	THE TECHNICAL MATERIEL CORP.				
		STOCK SIZE	MAMARONECK, NEW YORK				
A	1	TEFLON	INSULATOR, BANDSWITCH				
		MATERIAL	TOTAL TUBE MOTOR				
ISSUE ITEM			DATE	CH. NO.	DRAFTS	CHECKER	ENG. APP.
A 1 "A" SLOTS WERE 1/4 X 1/2			8-18-60	2798	PELL	JCB	DR
TOLERANCES			SCALE: FULL-DO NOT SCALE-				
DEC. DIM. ±			MAXIMUM ALLOWABLE TOLERANCES HAVE BEEN DETERMINED AND ANY DEVIATIONS WILL BE CAUSE FOR REJECTION. REMOVE ALL BURRS AND SHARP EDGES				
FRAC. DIM. ± 1/64							
ANGULAR DIM. ±							
		TYPE & TEMPER	HEAT TREAT. SPEC.		DRAWN	CHECKED	FINAL APPROVAL
					J.C. Biele	Alde	DRB
		FINISH & SPEC. NO.	ELEC. DES. APP		MECH. DES. APP		PX-571 A

REQ. PER. UNIT	USED ON			PX-572	A
	MODEL	ASS'Y. NO.	DATE		
1	GPT-40K	AR-116	7-1-60		



A ~ 1/8 DIA.

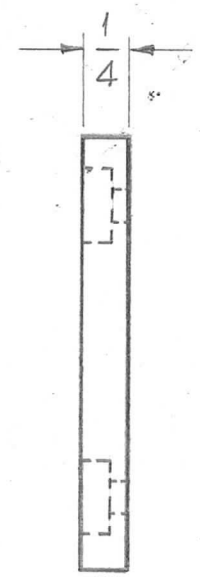
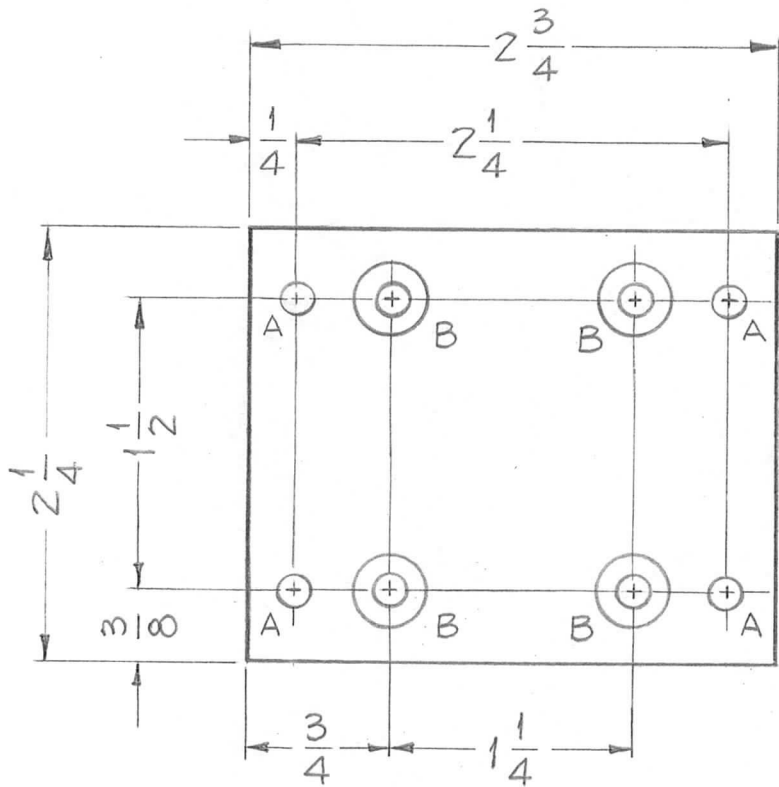
4 REQ.

\* FUNGUS PROOFING PER  
TMC SPECIFICATION S-113

REF~ AR-124

REQ.	ITEM	PART NO.	DESCRIPTION				SYMBOL
		1/16 THICK	THE TECHNICAL MATERIEL CORP.				
		STOCK SIZE	MAMARONECK, NEW YORK				
		PHENOLIC	INSULATOR, TUBE PROTECT				
		MATERIAL	RELAY				
A	S113 ADDED	4/13/64	11186	A.M.	<i>[Signature]</i>	<i>[Signature]</i>	
ISSUE	ITEM	CHANGED FROM	DATE	CH. NO.	DRAFTS	CHECKER	ENG. APP.
TOLERANCES			SCALE: FULL-DO NOT SCALE-				
DEC. DIM. ±			MAXIMUM ALLOWABLE TOLERANCES HAVE BEEN DETERMINED AND ANY DEVIATIONS WILL BE CAUSE FOR REJECTION.				
FRAC. DIM. ± 1/64			REMOVE ALL BURRS' AND SHARP EDGES				
ANGULAR DIM. ±							
XXXXP		J.C. Biele		<i>[Signature]</i>		<i>[Signature]</i>	
TYPE & TEMPER		HEAT TREAT. SPEC.		DRAWN		CHECKED	
NATURAL *				<i>[Signature]</i>		PX-572	
FINISH & SPEC. NO.		ELEC. DES. APP		MECH. DES. APP		A	

REQ. PER. UNIT	USED ON			PX-573	A
	MODEL	ASS'Y. NO.	DATE		
2	GPT-40K	AR-116	7-1-60		



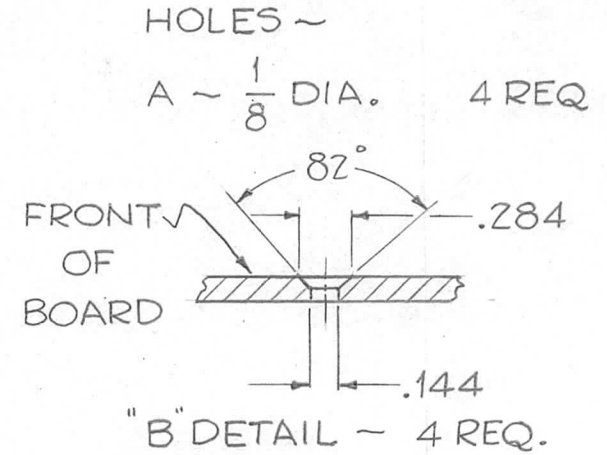
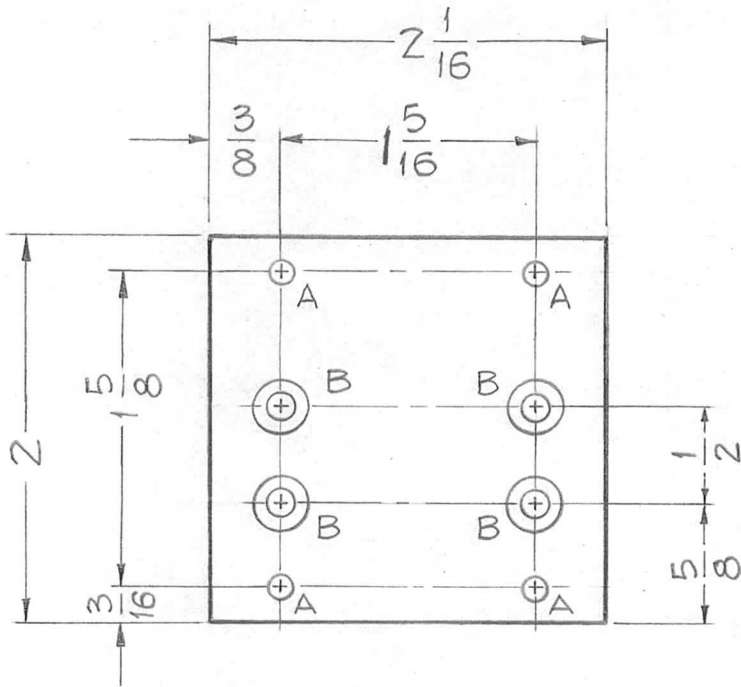
HOLES ~  
 A -  $\frac{11}{64}$  DIA. 4 REQ.  
 B -  $\frac{3}{8}$  DIA. 4 REQ.  
 B - DETAIL 4 REQ.

\* FUNGUS PROOFING PER  
 TMC SPECIFICATION S-113

REF - AR-117

ISSUE	ITEM	CHANGED FROM	DATE	CH. NO.	DRAFTS	CHECKER	ENG. APP.	REQ. ITEM	PART NO.	DESCRIPTION	SYMBOL				
								1/4" THICK		THE TECHNICAL MATERIEL CORP.					
								STOCK SIZE		MAMARONECK, NEW YORK					
A		5113 ADDED	4/13/64	11186	AM	<i>Jde</i>	<i>JB</i>	PHENOLIC		INSULATOR, PLATE OVL D					
								MATERIAL		RELAY MOUNTING					
TOLERANCES			SCALE: FULL-DO NOT SCALE-					XXXXP		J.C. Biele	<i>Jde</i>	<i>JB</i>			
DEC. DIM. ±			MAXIMUM ALLOWABLE TOLERANCES HAVE BEEN DETERMINED AND ANY DEVIATIONS WILL BE CAUSE FOR REJECTION. REMOVE ALL BURRS AND SHARP EDGES					TYPE & TEMPER	HEAT TREAT. SPEC.	DRAWN	CHECKED	FINAL APPROVAL			
FRAC. DIM. ± 1/64								NATURAL *							
ANGULAR DIM. ±															
								FINISH & SPEC. NO.	ELEC. DES. APP	MECH. DES. APP	PX-573	A			

REQ. PER UNIT	USED ON			PX-574	A
	MODEL	ASS'Y. NO.	DATE		
1	GPT40K	AR-116	7-1-60		



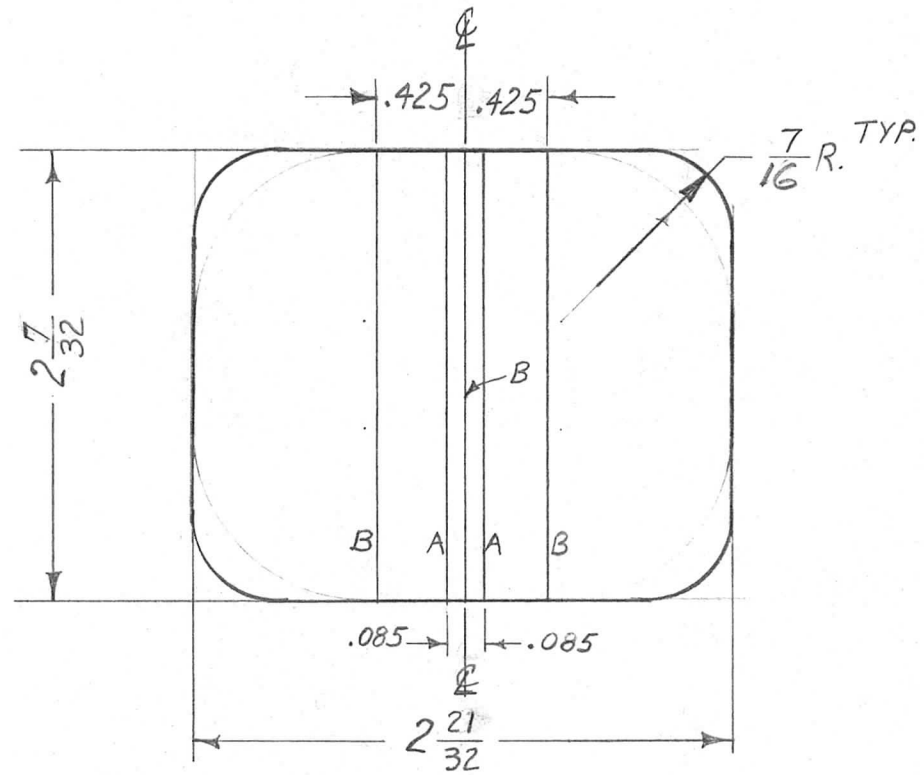
\* FUNGUS PROOFING PER TMC SPECIFICATION S-113

REF ~ AR-124

							REQ.	ITEM	PART NO.	DESCRIPTION	SYMBOL	
									1/8 THICK	THE TECHNICAL MATERIEL CORP.		
									STOCK SIZE	MAMARONECK, NEW YORK		
									PHENOLIC	INSULATOR, TUBE PROTECT		
									MATERIAL	RELAY MOUNTING		
A		S113 ADDED	4/13/64	11186	AM	<i>Jude</i>			J.C. Biele	<i>Jude</i>	<i>23</i>	
ISSUE	ITEM	CHANGED FROM	DATE	CH. NO.	DRAFTS	CHECKER	ENG. APP.					
TOLERANCES			SCALE: FULL ~ DO NOT SCALE-									
DEC. DIM. ±			MAXIMUM ALLOWABLE TOLERANCES HAVE BEEN DETERMINED AND ANY DEVIATIONS WILL BE CAUSE FOR REJECTION.									
FRAC. DIM. ± 1/64			REMOVE ALL BURRS AND SHARP EDGES									
ANGULAR DIM. ±			XXXXP			TYPE & TEMPER			DRAWN			
			NATURAL *			HEAT TREAT. SPEC.			CHECKED			
			FINISH & SPEC. NO.			ELEC. DES. APP			MECH. DES. APP			
									PX-574 A			

REQ. PER UNIT	USED ON		
	MODEL	ASS'Y. NO.	DATE
1	DVM-2		7-27-60
1	DVM-4		2-6-62

PX-575 B



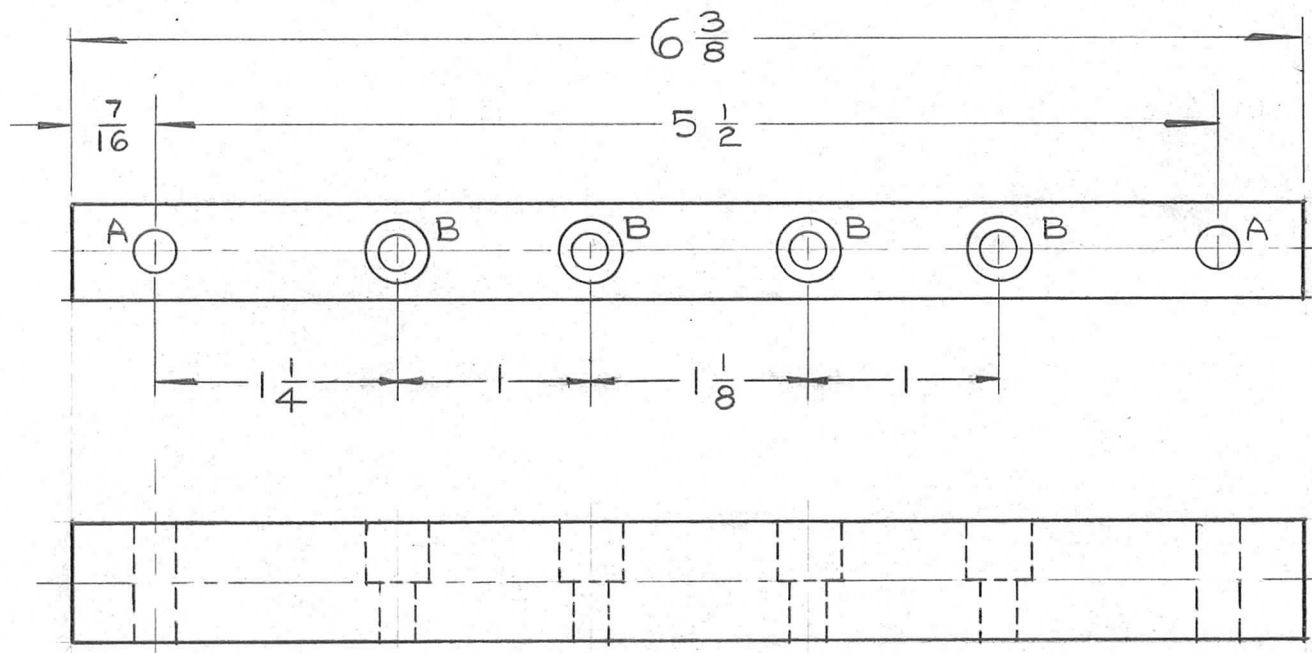
NOTE:  
 "A" LINES - SCRIBE, & FILL WITH RED, 2 REQ.  
 "B" LINES - SCRIBE, & FILL WITH WHITE, 3 REQ.

REQ.	ITEM	PART NO.	DESCRIPTION				SYMBOL										
		.040	THE TECHNICAL MATERIEL CORP.														
		STOCK SIZE	MAMARONECK, NEW YORK														
B	1		PLEXIGLASS				BEZEL, CALIBRATION										
A	2		MATERIAL														
A	1		CLEAR														
ISSUE		ITEM	CHANGED FROM	DATE	CH. NO.	DRAFTS	CHECKER	ENG. APP.	TYPE & TEMPER	HEAT TREAT. SPEC.	DRAWN	CHECKED	FINAL APPROVAL				
TOLERANCES				SCALE: $\frac{1}{4}$				CLEAR									
DEC. DIM. $\pm$				MAXIMUM ALLOWABLE TOLERANCES HAVE BEEN DETERMINED AND ANY DEVIATIONS WILL BE CAUSE FOR REJECTION. REMOVE ALL BURRS AND SHARP EDGES				TYPE & TEMPER		HEAT TREAT. SPEC.		DRAWN		CHECKED			
FRAC. DIM. $\pm \frac{1}{64}$								FINISH & SPEC. NO.		ELEC. DES. APP		MECH. DES. APP		PX-575		B	
ANGULAR DIM. $\pm$																	

REQ. PER UNIT	USED ON			PX-576	A
	MODEL	ASS'Y. NO.	DATE		
1	GPT 40K	AP-103	8-8-60		

A ~  $\frac{13}{64}$  DIA. HOLE (2) REQ.

B ~ SEE DETAIL



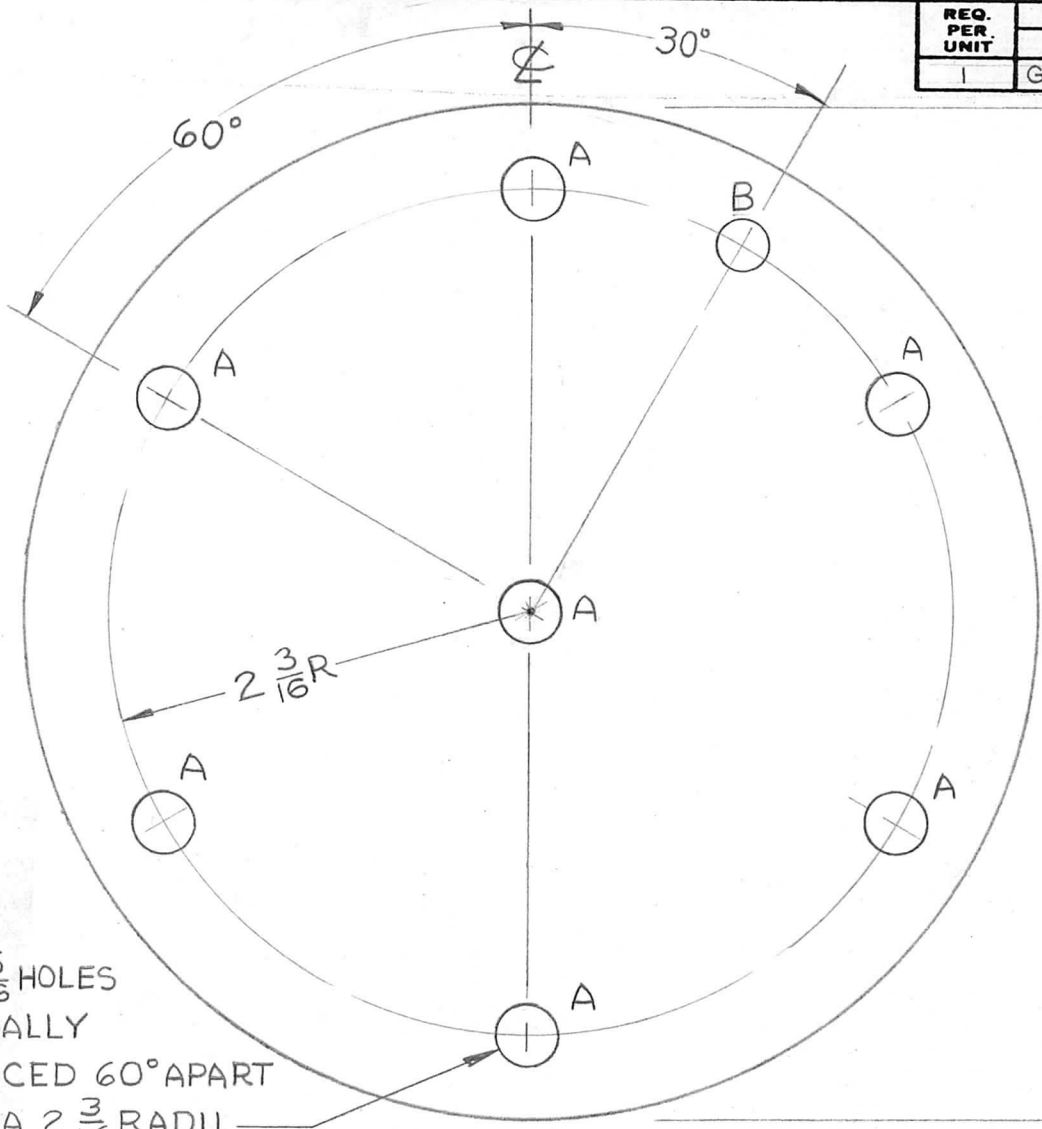
\* FUNGUS PROOFING PER TMC SPECIFICATION S-113

REQ.	ITEM	PART NO.	DESCRIPTION				SYMBOL	
			THE TECHNICAL MATERIEL CORP.					
			MAMARONECK, NEW YORK					
			BRACKET, SWITCH					
			SHORTING RELAY					
A	SI13 ADDED	4/13/64 11186 AM	file	DB				
ISSUE	ITEM	CHANGED FROM	DATE	CH. NO.	DRAFTS	CHECKER	ENG. APP.	
TOLERANCES			SCALE: FULL					
DEC. DIM. ±			MAXIMUM ALLOWABLE TOLERANCES HAVE BEEN DETERMINED AND ANY DEVIATIONS WILL BE CAUSE FOR REJECTION.					
FRAC. DIM. ± 1/64			REMOVE ALL BURRS AND SHARP EDGES					
ANGULAR DIM. ±								
MATERIAL		XXXXP	TYPE & TEMPER		HEATTREAT. SPEC.	DRAWN	CHECKED	FINAL APPROVAL
PHENOLIC			NATURAL*					
FINISH & SPEC. NO.		ELEC. DES. APP.		MECH. DES. APP.		PX-576		A



REQ. PER UNIT	USED ON		
	MODEL	ASS'Y. NO.	DATE
1	GPT-40K	DC-100	8-9-60

PX-577



A ~ 5/16 DIA. 7 REQ.  
 B ~ 1/4 DIA. 1 REQ.

(6) 5/16 HOLES  
 EQUALLY  
 SPACED 60° APART  
 ON A 2 3/16 RADII.

REQ.	ITEM	PART NO.	DESCRIPTION		SYMBOL								
		1/4 THK	THE TECHNICAL MATERIEL CORP.										
		STOCK SIZE	MAMARONECK, NEW YORK										
		TEFLON	PLATE CONNECTOR,										
		MATERIAL	INNER CONDUCTOR										
ISSUE	ITEM	CHANGED FROM	DATE	CH. NO.	DRAFTS	CHECKER	ENG. APP.	DRAWN	CHECKED	FINAL APPROVAL			
TOLERANCES			SCALE: FULL										
DEC. DIM. ±			MAXIMUM ALLOWABLE TOLERANCES HAVE BEEN DETERMINED AND ANY DEVIATIONS WILL BE CAUSE FOR REJECTION. REMOVE ALL BURRS AND SHARP EDGES			TYPE & TEMPER		HEATTREAT. SPEC.		ELEC. DES. APP			
FRAC. DIM. ± 1/64						FINISH & SPEC. NO.		MECH. DES. APP		PX-577			
ANGULAR DIM. ±													

NOTICE TO PERSONS RECEIVING THIS DRAWING

THE TECHNICAL MATERIEL CORPORATION claims proprietary right in the material disclosed hereon. This drawing is issued in confidence for engineering information only and may not be reproduced or used to manufacture anything shown hereon without permission from THE TECHNICAL MATERIEL CORPORATION to the user. This drawing is loaned for mutual assistance and is subject to recall at any time.

Property of:

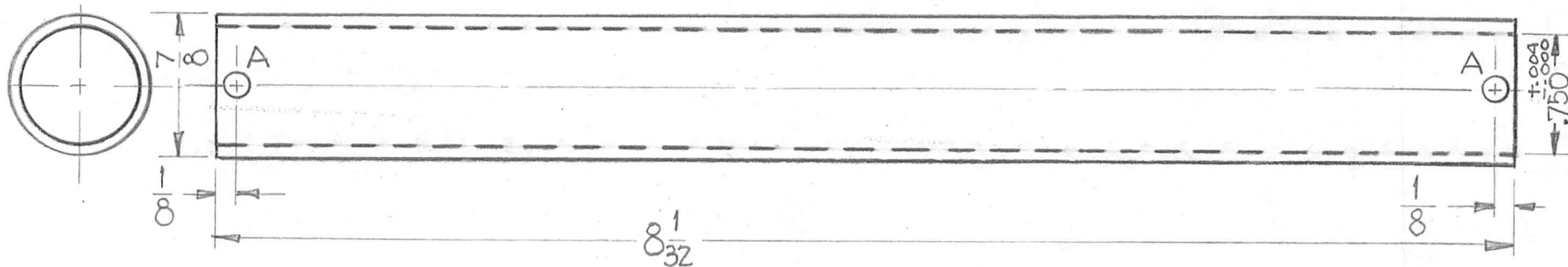
THE TECHNICAL MATERIEL CORPORATION  
MAMARONECK, NEW YORK

REQ. PER UNIT	USED ON			PX-578	B
	MODEL	ASS'Y. NO.	DATE		
1	SPT-10KP		8-5-60		

HOLES

A - 9/64 DIA  
B -

Req'd.  
2



\* FUNGUS PROOFING PER  
TMC SPECIFICATION S-113

REQ.	ITEM	PART NO.	DESCRIPTION				SYMBOL
B		7/8 TUBING	THE TECHNICAL MATERIEL CORP.				
		STOCK SIZE	MAMARONECK, NEW YORK				
A	1	DIM. .750 <sup>+.004</sup> / <sub>-.000</sub> WAS 3/4	FORM, CORE				
		PHENOLIC					
		MATERIAL					
		XXXXP					
		TYPE & TEMPER					
		HEAT TREAT. SPEC.					
		NATURAL*					
		FINISH & SPEC. NO.					
ISSUE		CHANGED FROM	DATE	CH. NO.	DRAFTS	CHECKER	ENG. APP.
TOLERANCES		SCALE:					
DEC. DIM. ±		MAXIMUM ALLOWABLE TOLERANCES HAVE BEEN DETERMINED AND ANY DEVIATIONS WILL BE CAUSE FOR REJECTION.					
FRAC. DIM. ± 1/64		REMOVE ALL BURRS AND SHARP EDGES					
ANGULAR DIM. ±							
DRAWN			CHECKED		FINAL APPROVAL		
D.A. Man			J.W.		C.M.B.		
ELEC. DES. APP			MECH. DES. APP		PX-578		
					B		

NOTICE TO PERSONS RECEIVING THIS DRAWING

THE TECHNICAL MATERIEL CORPORATION claims proprietary right in the material disclosed hereon. This drawing is issued in confidence for engineering information only and may not be reproduced or used to manufacture anything shown hereon without permission from THE TECHNICAL MATERIEL CORPORATION to the user. This drawing is loaned for mutual assistance and is subject to recall at any time.

Property of:

THE TECHNICAL MATERIEL CORPORATION  
MAMARONECK, NEW YORK

REQ. PER. UNIT	USED ON			PX-579	A
	MODEL	ASS'Y. NO.	DATE		
1	GPT-10KP		8-5-60		

HOLE

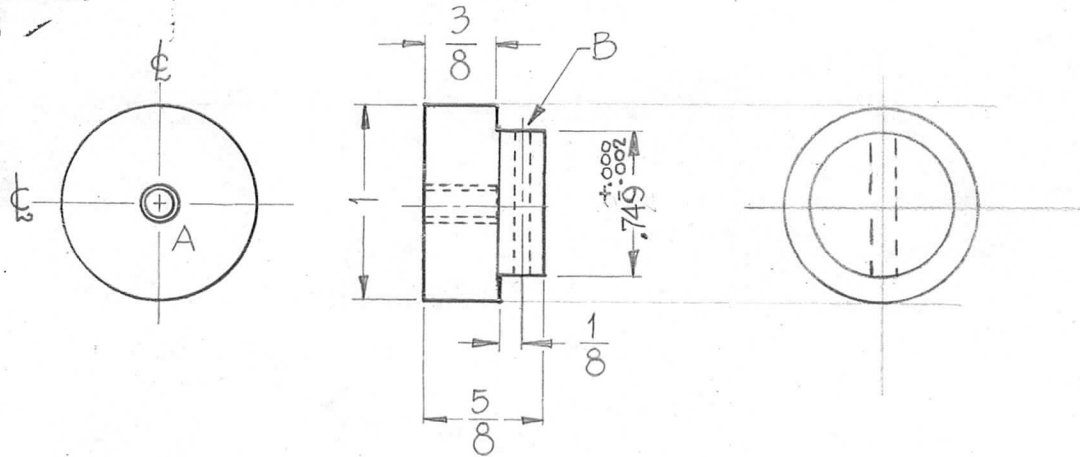
A ~ Dr. & Tap for 8-32 (3/8" deep)

B ~ Dr. for 4-40 Self Tap Screw

Rec'd.

1

1

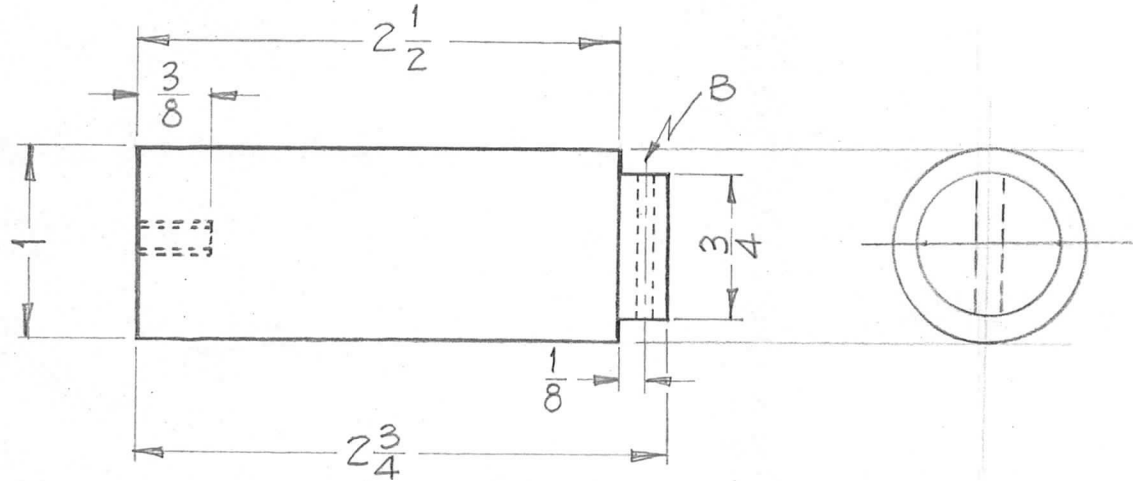
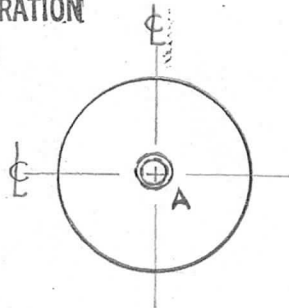


								REQ. ITEM	PART NO.	DESCRIPTION			SYMBOL				
								THE TECHNICAL MATERIEL CORP. MAMARONECK, NEW YORK									
								STOCK SIZE									
								EPOXY			CAP, END, CORE FORM						
								MATERIAL									
ISSUE	ITEM	CHANGED FROM	DATE	CH. NO.	DRAFTS	CHECKER	ENG. APP.	G11		D.S. 8-5-60	the	AMB					
TOLERANCES			SCALE: H					TYPE & TEMPER		HEAT TREAT. SPEC.		DRAWN		CHECKED		FINAL APPROVAL	
DEC. DIM.			MAXIMUM ALLOWABLE TOLERANCES HAVE BEEN DETERMINED AND ANY DEVIATIONS WILL BE CAUSE FOR REJECTION. REMOVE ALL BURRS AND SHARP EDGES									Flow		PX-579		A	
FRAC. DIM. ± 1/64																	
ANGULAR DIM. ±								FINISH & SPEC. NO.		ELEC. DES. APP		MECH. DES. APP					

**NOTICE TO PERSONS RECEIVING THIS DRAWING**

THE TECHNICAL MATERIEL CORPORATION claims proprietary right in the material disclosed hereon. This drawing is issued in confidence for engineering information only and may not be reproduced or used to manufacture anything shown hereon without permission from THE TECHNICAL MATERIEL CORPORATION to the user. This drawing is loaned for mutual assistance and is subject to recall at any time.

Property of:  
**THE TECHNICAL MATERIEL CORPORATION**  
 MAMARONECK, NEW YORK



**HOLES**

- |                                   |        |   |
|-----------------------------------|--------|---|
| A ~ Dr. & Tap for 8-32 (3/8 Deep) | Req'd. | 1 |
| B ~ Dr. for 4-40 Self Tap Screw   |        | 1 |

REQ. PER. UNIT	USED ON		
	MODEL	ASS'Y. NO.	DATE
1	GPT-10KP		8-5-60

PX-580

REQ.	ITEM	PART NO.	DESCRIPTION		SYMBOL		
			THE TECHNICAL MATERIEL CORP.				
			MAMARONECK, NEW YORK				
			CAP, END, CORE FORM, LONG				
			EPOXY				
			MATERIAL				
			G11				
			TYPE & TEMPER	HEAT TREAT. SPEC.			
			FINISH & SPEC. NO.	ELEC. DES. APP	MECH. DES. APP		
ISSUE ITEM CHANGED FROM			DATE	CH. NO.	DRAFTS	CHECKER	ENG. APP.
TOLERANCES			SCALE: <i>1</i>				
DEC. DIM. ±			MAXIMUM ALLOWABLE TOLERANCES HAVE BEEN DETERMINED AND ANY DEVIATIONS WILL BE CAUSE FOR REJECTION. REMOVE ALL BURRS AND SHARP EDGES				
FRAC. DIM. ± <i>1/64</i>							
ANGULAR DIM. ±							
			DRAWN <i>D. Miller 8-5-60</i>		CHECKED <i>file</i>	FINAL APPROVAL <i>AKB</i>	
					PX-580		

REQ. PER. UNIT	USED ON		
	MODEL	ASS'Y. NO.	DATE
	CHG-1		8-23-60

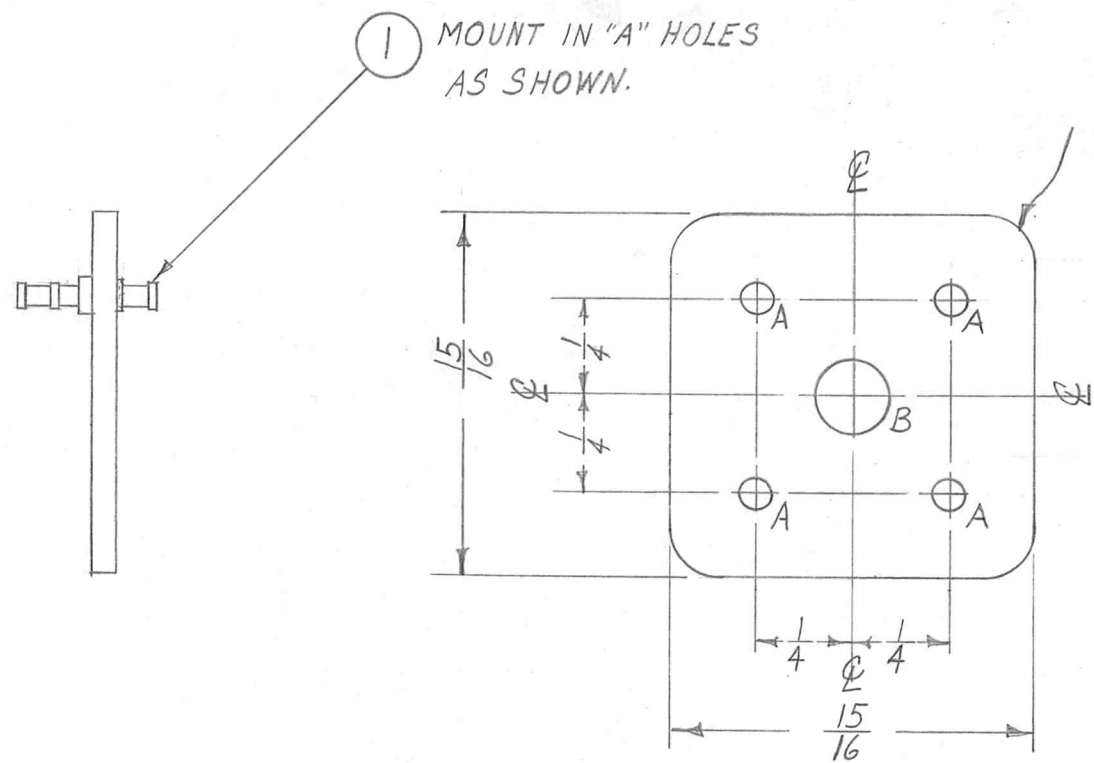
PX-585

A ~  $\frac{5}{64}$  DIA.

4 REQ.

B ~ SEE CHART

1 "

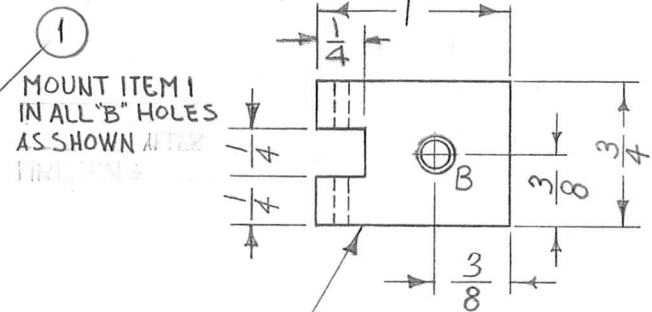
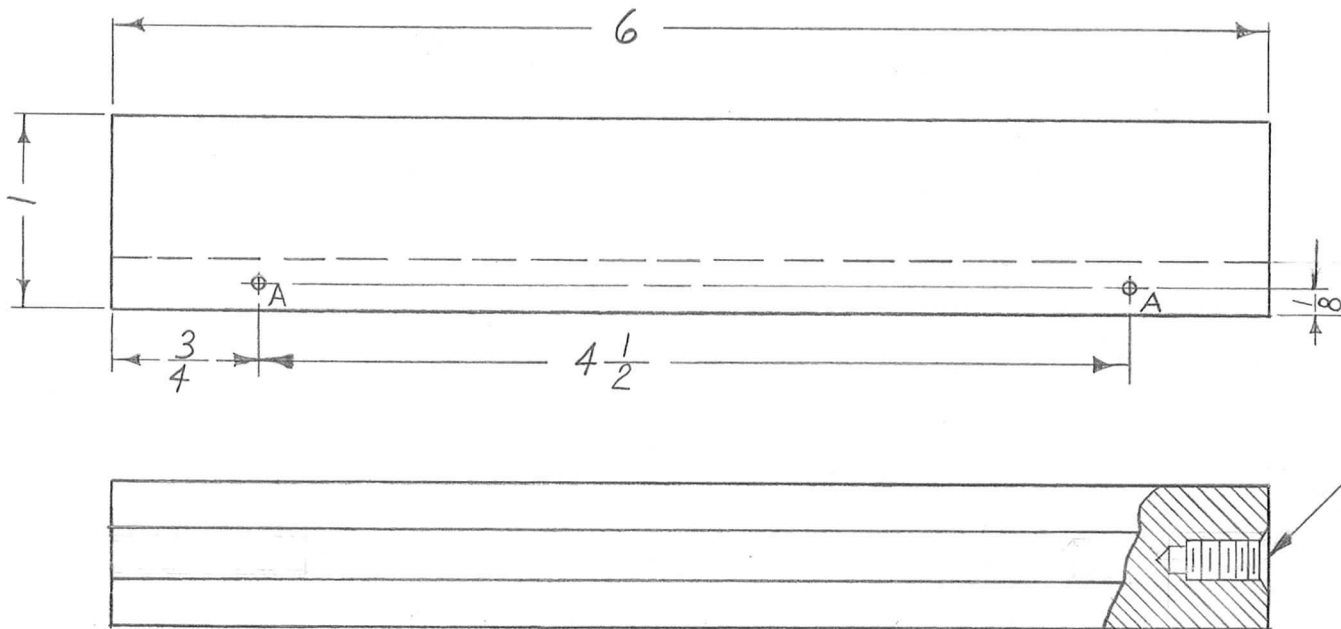


$\frac{1}{8}$  R.  
4 CORNERS

TMC PART NO.	"B" HOLE DIA.
PX-585-1	3/16
PX-585-2	1/4

4 1 TE-168-4B								TERMINAL, MINIATURE		
REQ. ITEM PART NO.								DESCRIPTION SYMBOL		
1/6 STOCK SIZE								THE TECHNICAL MATERIEL CORP.		
PHENOLIC MATERIAL								MAMARONECK, NEW YORK		
LAMINATE XXXP								TERMINAL BOARD, TRANSFORMER, 4 LUG.		
TYPE & TEMPER HEAT TREAT. SPEC.								DRAWN CHECKED FINAL APPROVAL		
NATURAL								[Signatures]		
FINISH & SPEC. NO.								PX-585		
ELEC. DES. APP MECH. DES. APP										
ISSUE	ITEM	CHANGED FROM	DATE	CH. NO.	DRAFTS	CHECKER	ENG. APP.			
TOLERANCES			SCALE: 2X							
DEC. DIM. ±			MAXIMUM ALLOWABLE TOLERANCES HAVE BEEN DETERMINED AND ANY DEVIATIONS WILL BE CAUSE FOR REJECTION. REMOVE ALL BURRS AND SHARP EDGES							
FRAC. DIM. ± 1/64										
ANGULAR DIM. ±										

REQ. PER. UNIT	USED ON			PX-587	A
	MODEL	ASS'Y. NO.	DATE		
	2	ACU	9-16-60		

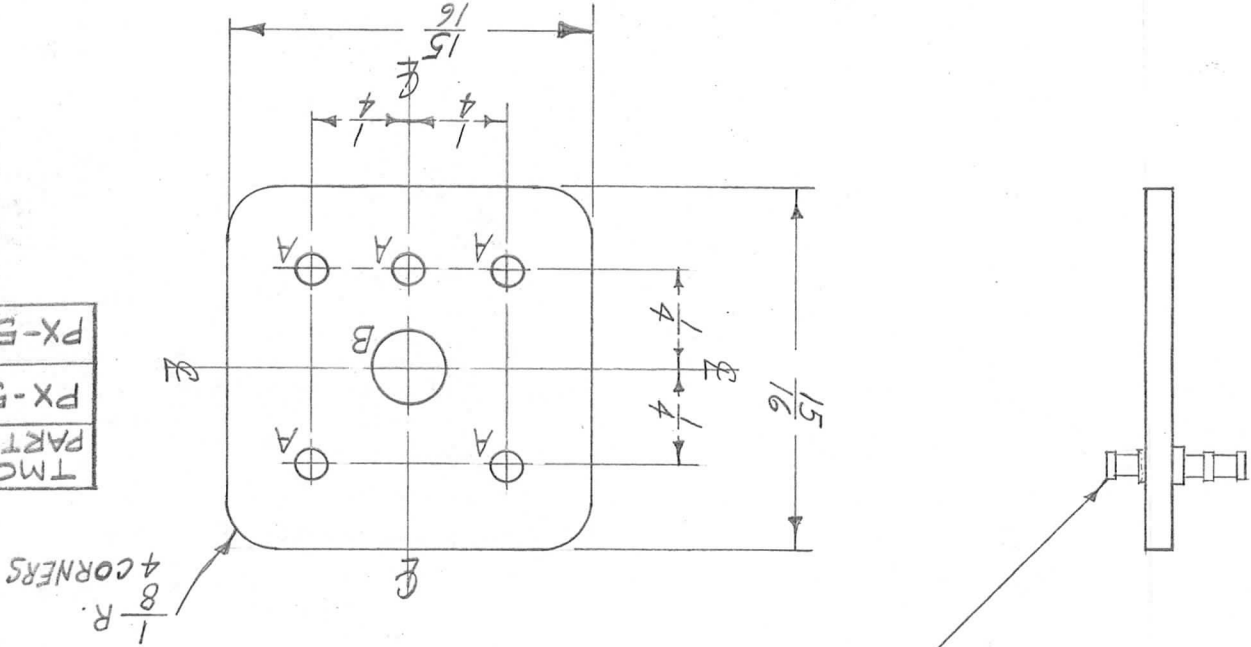


- A — .065 D. (FOR PIN 99-062-16). 2 REQ.
- B — HOLES TO BE MACHINED AS FOLLOWS: 2 REQ.
- 1- #16 DRILL (.174) TO .500 DP.
  - 2- 120° C'SINK, .20-.23 DIA.
  - 3- TAP .360 MIN. DEPTH, USE HELI COIL TAP #2 CPA
  - 4- MOUNT ITEM (1) 3/4 TO 1-1/2 PITCH BELOW SURFACE
  - 5- BREAK OFF DRIVING TANG,

	2	1	NT-139-SC08-20	INSERT, SCREW THREAD			
	REQ.	ITEM	PART NO.	DESCRIPTION			SYMBOL
			3/4 X 1"	THE TECHNICAL MATERIEL CORP.			
			STOCK SIZE	MAMARONECK, NEW YORK			
A	2	1	SUPRA MICA 500	SUPPORT, COIL			
			MATERIAL				
ISSUE	ITEM	CHANGED FROM	DATE	CH. NO.	DRAFTS	CHECKER	ENG. APP.
			8-9-62	6799	GS.	WDE	16
TOLERANCES			SCALE: FULL				
DEC. DIM. ±			MAXIMUM ALLOWABLE TOLERANCES HAVE BEEN DETERMINED AND ANY DEVIATIONS WILL BE CAUSE FOR REJECTION.				
FRAC. DIM. ± 1/64			REMOVE ALL BURRS AND SHARP EDGES				
ANGULAR DIM. ±			TYPE & TEMPER	HEAT TREAT. SPEC.	DRAWN	CHECKED	FINAL APPROVAL
							PX-587
			FINISH & SPEC. NO.	ELEC. DES. APP	MECH. DES. APP		A

DEC. DIM. $\pm$ FRAC. DIM. $\pm$ 1/64 ANGULAR DIM. $\pm$		MAXIMUM ALLOWABLE TOLERANCES HAVE BEEN DETERMINED AND ANY DEVIATIONS WILL BE CAUSE FOR REJECTION REMOVE ALL BURRS AND SHARP EDGES		FINISH & SPEC. NO.		ELEC. DES. APP. MECH. DES. APP.		PX-586	
TOLERANCES		SCALE: 2X		NATURAL		CHECKED		FINAL APPROVAL	
ISSUE	ITEM	CHANGED FROM	DATE	CH. NO.	DRAFTS	CHECKER	ENG. APP.	DRAWN	
								CHECKED	
								MATERIAL	
								LAMINATE XXXP	
								PHENOLIC	
								STOCK SIZE	
								76	
								PART NO.	
								TE-168-4B	
REQ. PER UNIT	MODEL	ASSY. NO.	DATE	DESCRIPTION		SYMBOL		TERMINAL, MINIATURE	
5	1	5	1	THE TECHNICAL MATERIEL CORP. MAMARONECK, NEW YORK				TERMINAL BOARD, TRANSFORMER, 5 LUG	

TMC PART NO.	PX-586-1	3/16	"B" HOLE DIA.
	PX-586-2	1/4	



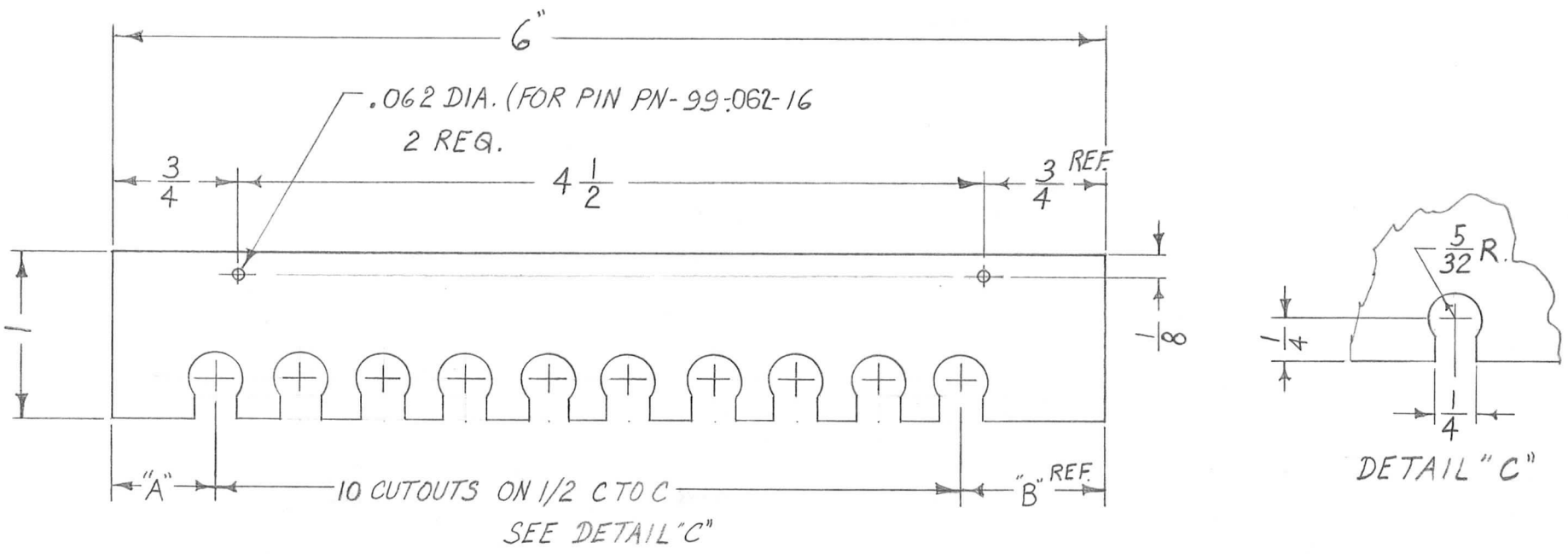
A ~ 5/64 DIA.  
B ~ SEE CHART  
5 REQ. 1 "

REQ. PER UNIT	MODEL	ASSY. NO.	DATE	USED ON	CHG. 1	PX-586
			8-23-60			

REQ. PER. UNIT	USED ON		
	MODEL	ASS'Y. NO.	DATE
	ACU		9-16-60

PX-588

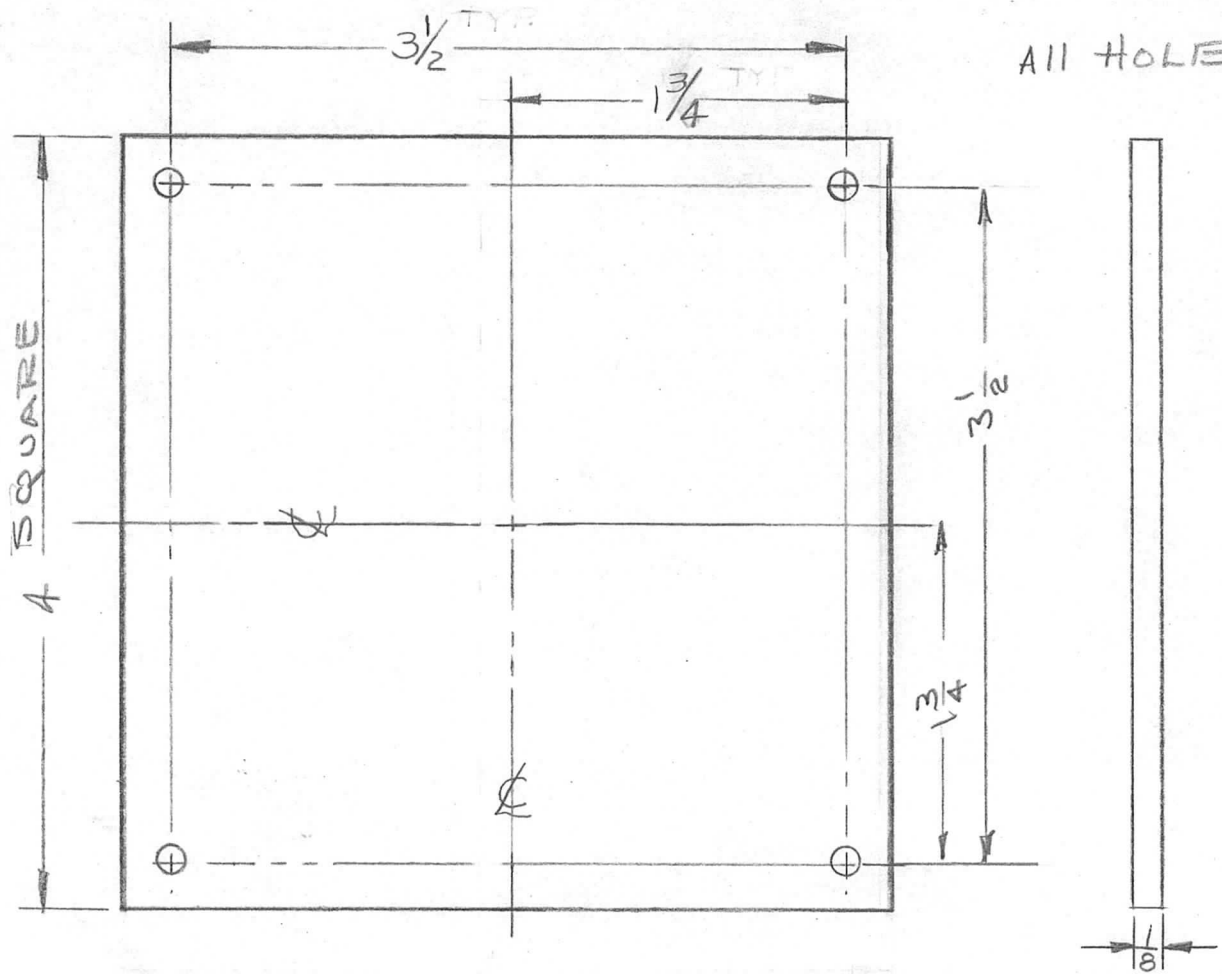
TMC PART #	DIM. "A"	DIM. "B" REF.	REQ. PER UNIT
PX-588 -1	5/8	7/8	2
PX-588 -2	3/4	3/4	1



ISSUE	ITEM	CHANGED FROM	DATE	CH. NO.	DRAFTS	CHECKER	ENG. APP.	REQ. ITEM	PART NO.	DESCRIPTION	SYMBOL				
								1/4		THE TECHNICAL MATERIEL CORP.					
								STOCK SIZE		MAMARONECK, NEW YORK					
								TEFLON		INSERT, COIL SUPPORT					
								MATERIAL							
TOLERANCES			SCALE: FULL												
DEC. DIM. ±			MAXIMUM ALLOWABLE TOLERANCES HAVE BEEN DETERMINED AND ANY DEVIATIONS WILL BE CAUSE FOR REJECTION. REMOVE ALL BURRS AND SHARP EDGES					TYPE & TEMPER	HEAT TREAT. SPEC.	DRAWN	CHECKED	FINAL APPROVAL			
FRAC. DIM. ± 1/64															PX-588
ANGULAR DIM. ±															
								FINISH & SPEC. NO.	ELEC. DES. APP	MECH. DES. APP					



REQ. PER. UNIT	USED ON			PX593	A
	MODEL	ASSY. NO.	DATE		
1	AX209.	GPT-40K	9-22-60		



ALL HOLES  $\frac{13}{64}$  DIA

REF PX-569

ISSUE	ITEM	CHANGED FROM	DATE	CH. NO.	DRAFTS	CHECKER	ENG. APP.	REQ. ITEM	PART NO.	DESCRIPTION	SYMBOL					
								$\frac{1}{8}$		THE TECHNICAL MATERIEL CORP.						
								STOCK SIZE		MAMARONECK, NEW YORK						
A	1	TITLE CHANGED	11/28/60	3591	DAM	gcb	DR	PLEXIGLAS		WINDOW, FLUE, REAR						
								MATERIAL								
TOLERANCES			SCALE (DO NOT SCALE)							R0220	gcb	DR				
DEC. DIM. $\pm$			MAXIMUM ALLOWABLE TOLERANCES HAVE BEEN DETERMINED AND ANY DEVIATIONS WILL BE CAUSE FOR REJECTION. REMOVE ALL BURRS AND SHARP EDGES					TYPE & TEMPER	HEAT TREAT. SPEC.	DRAWN	CHECKED	FINAL APPROVAL				
FRAC. DIM. $\pm$ $\frac{1}{64}$													gcb	gcb	PX593	A
ANGULAR DIM. $\pm$																
								FINISH & SPEC. NO.		ELEC. DES. APP	MECH. DES. APP					

REQ. PER. UNIT	USED ON		
	MODEL	ASS'Y. NO.	DATE
1	CHC-1	A-1965	10-6-60

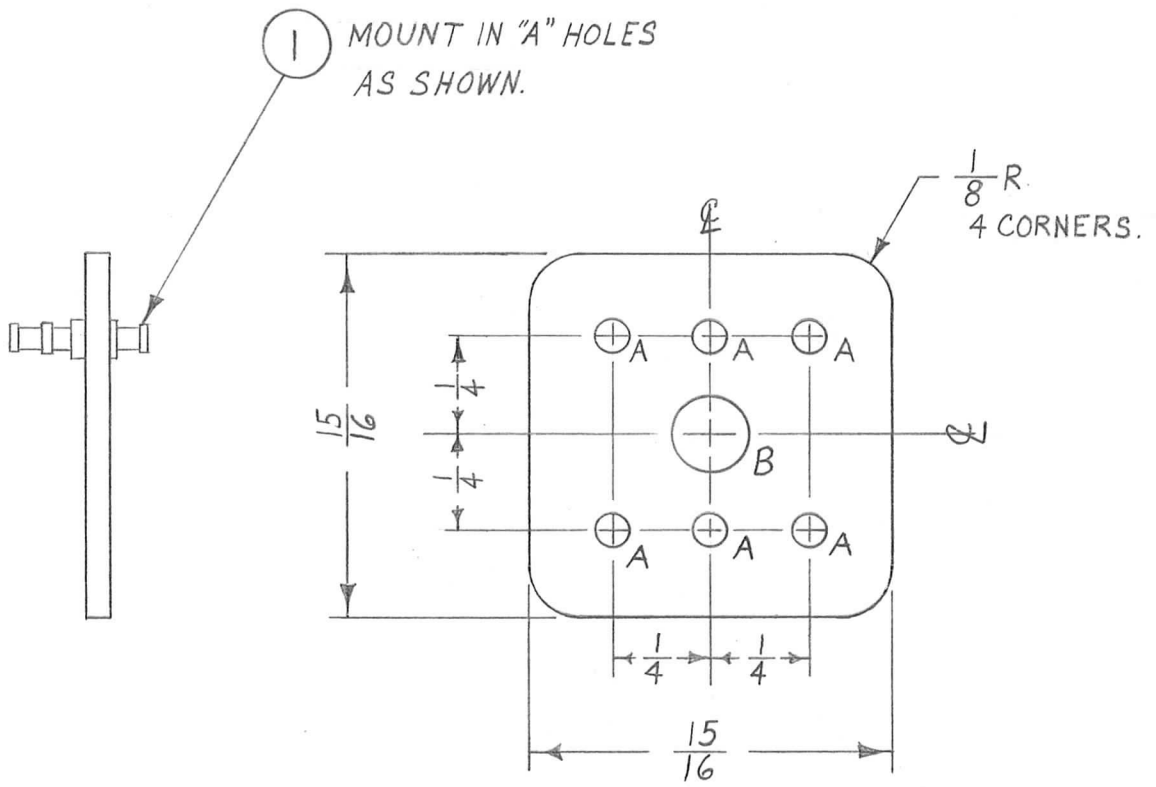
PX-595

A ~  $\frac{5}{64}$  DIA.

6 REQ.

B ~ SEE CHART

1 "

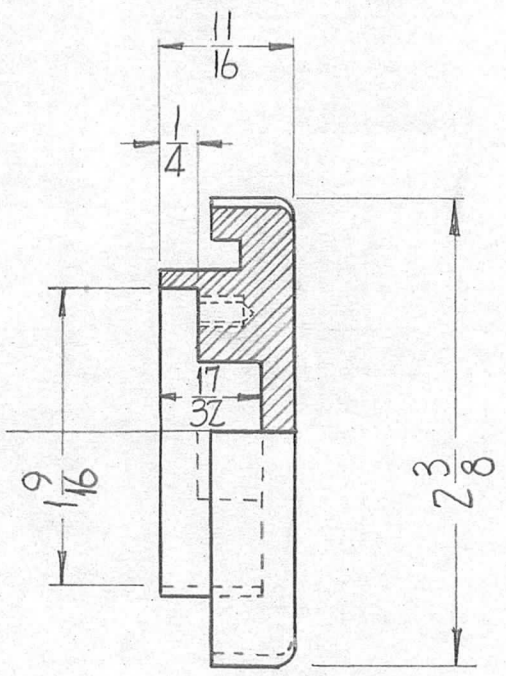
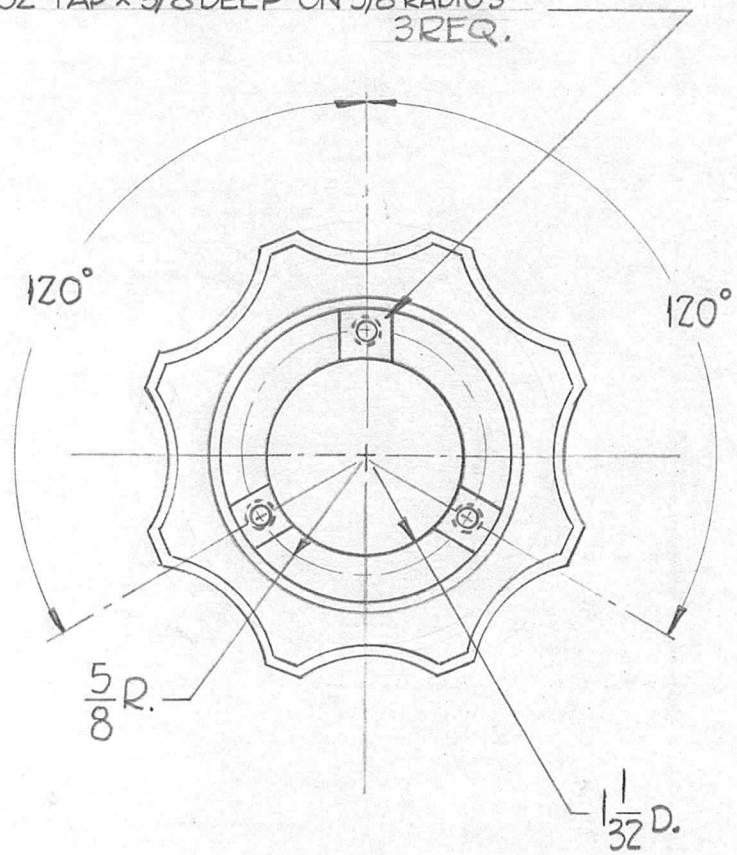


TMC PART NO.	"B" HOLE DIA.
PX-595-1	3/16
PX-595-2	1/4

6		1		TE-168-4B			TERMINAL, MINIATURE						
REQ.	ITEM	PART NO.					DESCRIPTION			SYMBOL			
		1/16					THE TECHNICAL MATERIEL CORP.						
		STOCK SIZE					MAMARONECK, NEW YORK						
		PHENOLIC					TERMINAL BOARD, TRANSFORMER, 6 LUGS						
		MATERIAL											
ISSUE	ITEM	CHANGED FROM	DATE	CH. NO.	DRAFTS	CHECKER	ENG. APP.	LAMINATE XXXP					
TOLERANCES			SCALE: 1:2										
DEC. DIM. ±			MAXIMUM ALLOWABLE TOLERANCES HAVE BEEN DETERMINED AND ANY DEVIATIONS WILL BE CAUSE FOR REJECTION.										
FRAC. DIM. ± 1/64			REMOVE ALL BURRS AND SHARP EDGES										
ANGULAR DIM. ±													
								DRAWN		CHECKED		FINAL APPROVAL	
								NATURAL		PX-595			
								FINISH & SPEC. NO.		ELEC. DES. APP		MECH. DES. APP	

REQ. PER. UNIT	USED ON			PX-599
	MODEL	ASSY. NO.	DATE	
1	CHG-1		11-21-60	

6-32 TAP x 3/8 DEEP ON 5/8 RADIUS  
3 REQ.



REF. MP-110 (MODIFIED AS SHOWN)

								REQ. ITEM	PART NO.	DESCRIPTION		SYMBOL	
										THE TECHNICAL MATERIEL CORP.			
										MAMARONECK, NEW YORK			
										KNOB, MODIFICATION			
ISSUE	ITEM	CHANGED FROM	DATE	CH. NO.	DRAFTS	CHECKER	ENG. APP.	MATERIAL					
TOLERANCES			SCALE:							 DRAWN	 CHECKED	 FINAL APPROVAL	
DEC. DIM. ±			MAXIMUM ALLOWABLE TOLERANCES HAVE BEEN DETERMINED AND ANY DEVIATIONS WILL BE CAUSE FOR REJECTION. REMOVE ALL BURRS AND SHARP EDGES					TYPE & TEMPER	HEAT TREAT. SPEC.			PX-599	
FRAC. DIM. ±								FINISH & SPEC. NO.	ELEC. DES. APP.	MECH. DES. APP.			
ANGULAR DIM. ±													