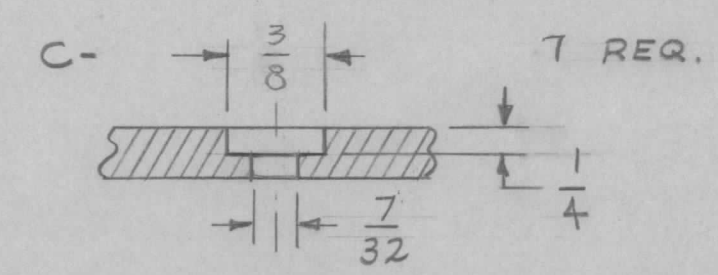


A $\frac{9}{32}$ DIA. 4 REQ.



REF~ TMC DWG NO. LD-807(2)

ISSUE	ITEM	CHANGED FROM	DATE	CH. NO.	DRAFTS	CHECKER	ENG. APP.
D	1	"A" HOLES REPLACE "B" HOLES	1-22-60	2625	WJ	JW	DB
C	1	SUPRA - MICA - 500 WAS - EPOXY	3-17-60	~	WJ	JW	DB
B	2	TWO "B" HOLES ADDED	3-14-60	~	WJ	JW	DB
A	1	TWO "A" HOLES DELETED	3-11-60	~	WJ	JW	DB
A	2	9/32 HOLE WAS 7/32					
A	1	2" Hole was 1/2" C Bore					

TOLERANCES: DEC. DIM. \pm , FRAC. DIM. \pm , ANGULAR DIM. \pm

SCALE: MAXIMUM ALLOWABLE TOLERANCES HAVE BEEN DETERMINED AND ANY DEVIATIONS WILL BE CAUSE FOR REJECTION. REMOVE ALL BURRS AND SHARP EDGES

1	GPT-40K	AT-101		2-17-60
REQ. PER UNIT	MODEL	PROJECT NO.	ASS'Y. NO.	DATE
USED ON				

REQ. ITEM	PART NO.	DESCRIPTION	SYMBOL						
	1/2	THE TECHNICAL MATERIEL CORP. MAMARONECK. NEW YORK							
	STOCK SIZE	BOARD, CONTACT SUPPORT							
	SUPRA MICA 500	ANT. TUNER							
	MATERIAL								
		<table border="1"> <tr> <td>DRAWN</td> <td>CHECKED</td> <td>FINAL APPROVAL</td> </tr> <tr> <td></td> <td></td> <td>DB</td> </tr> </table>	DRAWN	CHECKED	FINAL APPROVAL			DB	
DRAWN	CHECKED	FINAL APPROVAL							
		DB							
		ELEC. DES. APP. MECH. DES. APP.							
		PX-521	D						