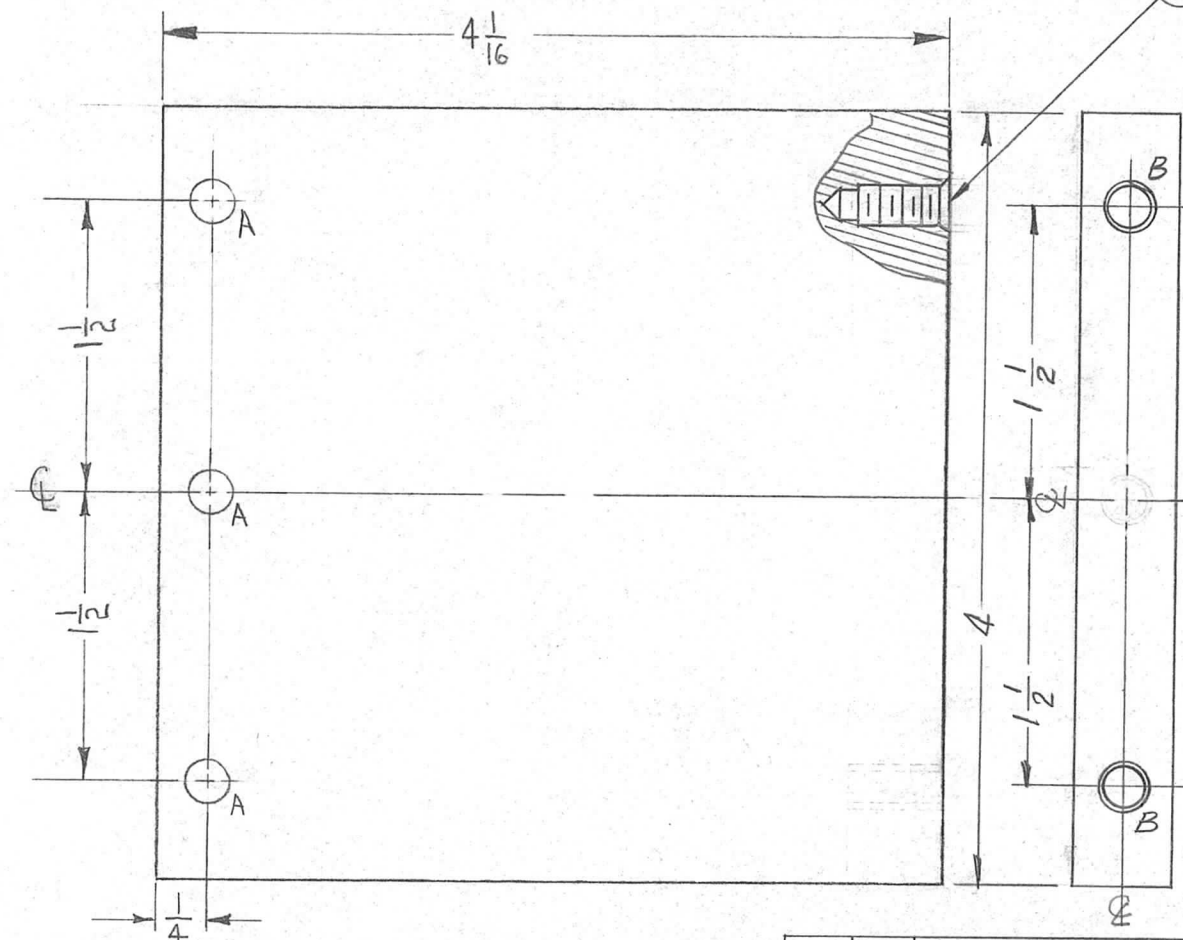


REQ. PER UNIT	USED ON			PX-500	B
	MODEL	ASSY. NO.	DATE		
1	AX-212	GPT-40K	11/12/60		



① MOUNT ITEM 1 IN ALL 'B' HOLES AS SHOWN AFTER FINISHING.

HOLE LEGEND

- A - 7/32 (.218) DIA. 3-REQ.
- B - HOLES TO BE MACHINED AS FOLLOWS: 2-REQ.
  - 1- 13/64 DRILL (.203) TO .562 DP.
  - 2- 120°C SINK .22-.25 DIA.
  - 3- TAP .410 MIN. DEPTH., USE HELI COIL TAP # 3FPB
  - 4- MOUNT ITEM (1) 3/4 TO 1-1/2 PITCH BELOW SURFACE.
  - 5- BREAK OFF DRIVING TANG.

**FUNGUS PROOFING PER TMC SPECIFICATION S-113**

\* NOTE: APPLY S-113 BEFORE HARDWARE IS MOUNTED

								2	1	NT-139-SFI-20	INSERT, SCREW THREAD			
								REQ.	ITEM	PART NO.	DESCRIPTION	SYMBOL		
										1/2 THICK	THE TECHNICAL MATERIEL CORP. MAMARONECK, NEW YORK			
										STOCK SIZE				
										PHENOLIC	BOARD, SUPPORT			
										MATERIAL				
										XXXP LAMINATE				
										TYPE & TEMPER	HEATTREAT. SPEC.	DRAWN	CHECKED	FINAL APPROVAL
										* S-113		EM	RLN	PX-500 B
										FINISH & SPEC. NO.		ELEC. DES. APP	MECH. DES. APP	

ISSUE	ITEM	CHANGED FROM	DATE	CH. NO.	DRAFTS	CHECKER	ENG. APP.
B	1	S-113 NOTE ADDED	4.13.64	11186	WB	<i>[Signature]</i>	<i>[Signature]</i>
A	2	'B' HOLES WERE DR & TAP 10-32	8-10-62	7008	GS	<i>[Signature]</i>	<i>[Signature]</i>
	1	ITEM 1 ADDED					

TOLERANCES		SCALE: FULL
DEC. DIM. ±		MAXIMUM ALLOWABLE TOLERANCES HAVE BEEN DETERMINED AND ANY DEVIATIONS WILL BE CAUSE FOR REJECTION. REMOVE ALL BURRS AND SHARP EDGES
FRAC. DIM. ±	1/64	
ANGULAR DIM. ±		