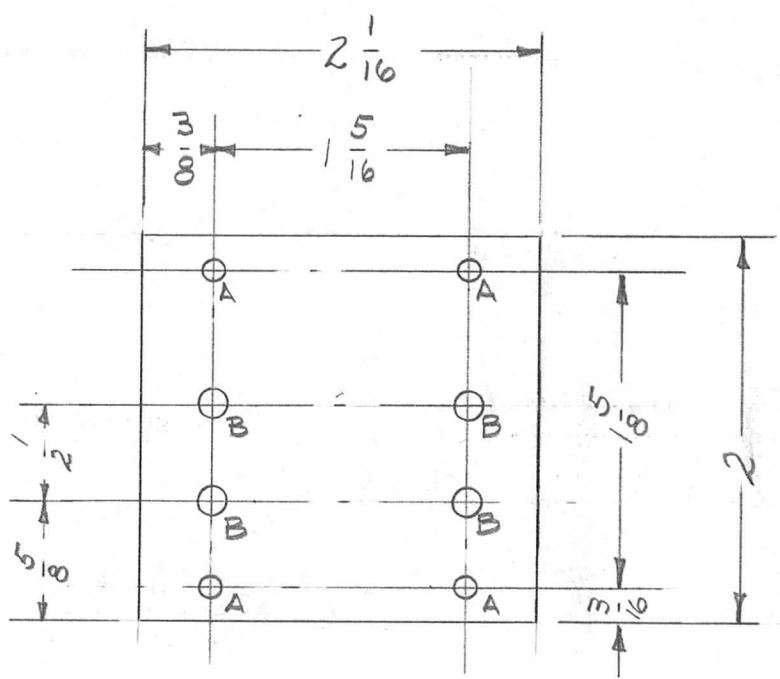


REQ. PER. UNIT	USED ON			PX-463	A
	MODEL	ASS'Y. NO.	DATE		
2	GPT-10K		3/6/59		



A- #33 DR (.113) 4 REQ'D,  
 B- 9/64 DIA. 4 "

NOTICE TO PERSONS RECEIVING THIS DRAWING

THE TECHNICAL MATERIEL CORPORATION claims proprietary right in the material disclosed hereon. This drawing is issued in confidence for engineering information only and may not be reproduced or used to manufacture anything shown hereon without permission from THE TECHNICAL MATERIEL CORPORATION to the user. This drawing is loaned for mutual assistance and is subject to recall at any time.

Property of:  
 THE TECHNICAL MATERIEL CORPORATION  
 MAMARONECK, NEW YORK

\* FUNGUS PROOFING PER  
 TMC SPECIFICATION S-113

REQ.	ITEM	PART NO.	DESCRIPTION				SYMBOL
		1/8 THICK	THE TECHNICAL MATERIEL CORP.				
		STOCK SIZE	MAMARONECK, NEW YORK				
		PHENOLIC	PLATE, RELAY MOUNTING				
		MATERIAL	PA SCREEN ON-OFF & TUNE OPERATOR				
A	S113 ADDED	4-13-64 11186 A.M. <i>file</i>	<i>file</i>	<i>file</i>	<i>file</i>	<i>ARB</i>	
ISSUE	ITEM	CHANGED FROM	DATE	CH. NO.	DRAFTS	CHECKER	ENG. APP.
TOLERANCES			SCALE:				
DEC. DIM. ±			MAXIMUM ALLOWABLE TOLERANCES HAVE BEEN DETERMINED AND ANY DEVIATIONS WILL BE CAUSE FOR REJECTION.				
FRAC. DIM. ±			REMOVE ALL BURRS AND SHARP EDGES				
ANGULAR DIM. ±							
TYPE & TEMPER		HEAT TREAT. SPEC.	DRAWN	CHECKED	FINAL APPROVAL		
XXXXP			<i>file</i>	<i>file</i>	<i>ARB</i>		
NATURAL *					PX-463 A		
FINISH & SPEC. NO.		ELEC. DES. APP	MECH. DES. APP				