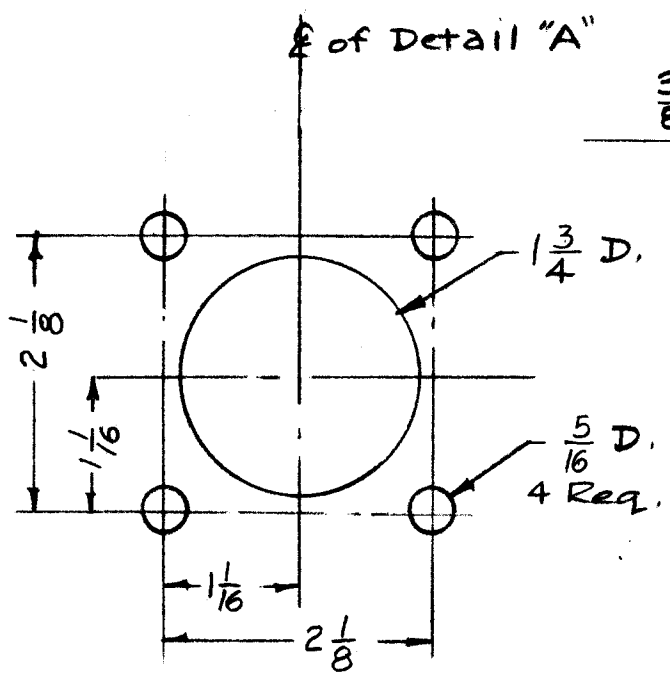
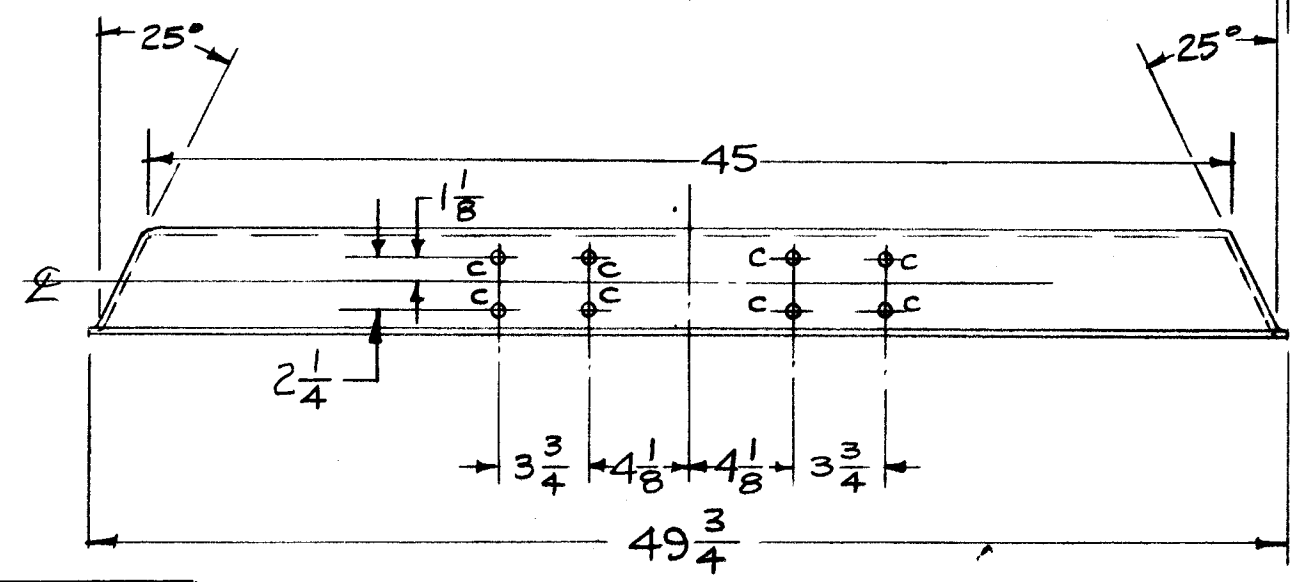
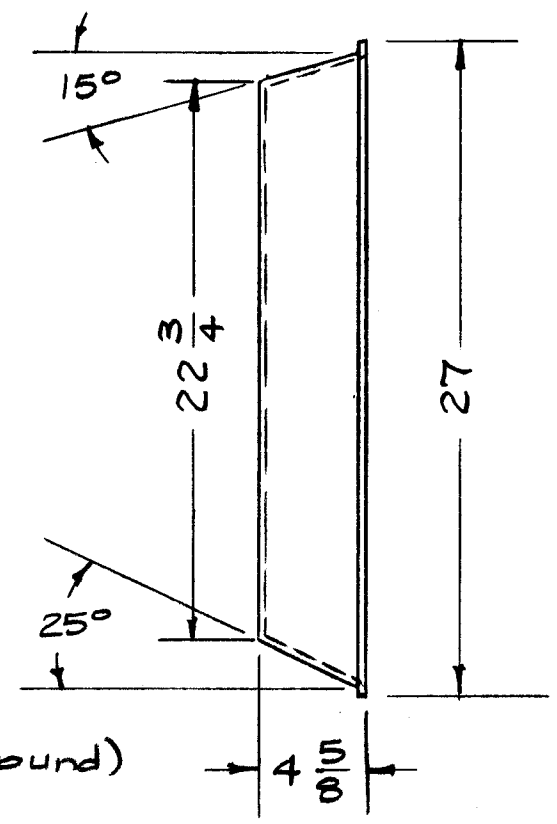
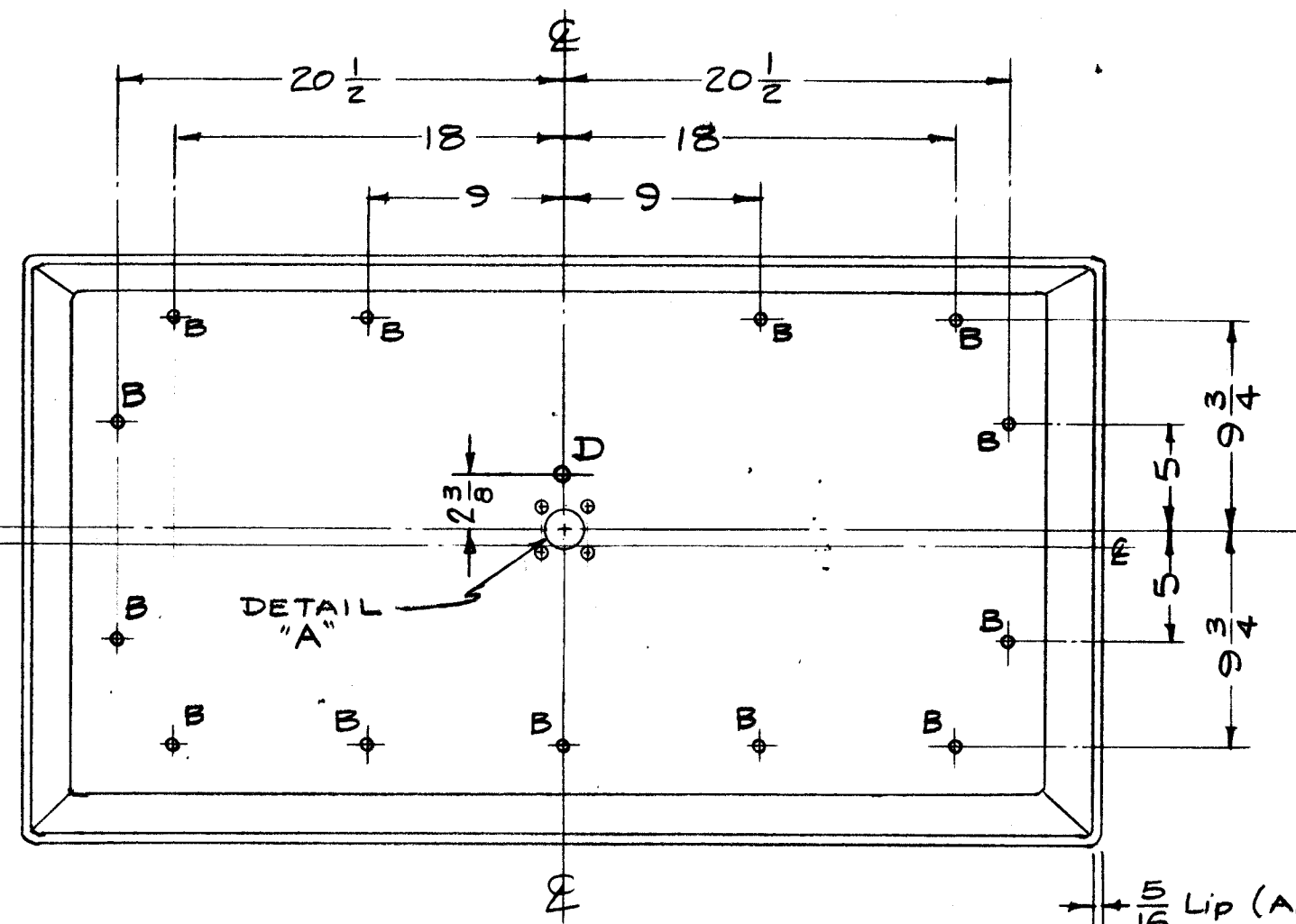


PX-442 B



- B - 1/4 (.250) D - 13 Req.
- C - #43 Dr. (.089) 8 Req.
- D - 5/16 (.312) D - 1 Req.



1/16 Lip (All Around)

2	DIM: 1 3/4 WAS 1/4 - 5/16 WAS 2/8	82-61	5369	G.D.V.	JCB		
B 1	2 1/8 WAS 1 7/16 - 1 1/16 WAS 23/32 REF. & DELETED ON DETAIL A PATTERN RELOCATED						
A 1	DIM. 2 3/8 Added	5-15-61	4884	RU	JCB	810	
ISSUE	ITEM	CHANGED FROM	DATE	CH. NO.	DRAFTS	CHECKER	ENG. APP.
TOLERANCES		SCALE:					
DEC. DIM. ±		MAXIMUM ALLOWABLE TOLERANCES HAVE BEEN DETERMINED AND ANY DEVIATIONS WILL BE CAUSE FOR REJECTION.					
FRAC. DIM. ±		REMOVE ALL BURRS AND SHARP EDGES					
ANGULAR DIM. ±							

REQ. PER UNIT	TER-5000-70	MODEL	PROJECT NO.	A-	ASS'Y. NO.	1-30-59	DATE
USED ON							

REQ. ITEM	PART NO.	DESCRIPTION		SYMBOL
1/8 Thk.		THE TECHNICAL MATERIEL CORP. MAMARONECK, NEW YORK		
STOCK SIZE		COVER, TOP		
Fiberglass				
MATERIAL		16/30/59	JCB	AKB
TYPE & TEMPER	HEAT TREAT. SPEC.	DRAWN	CHECKED	FINAL APPROVAL
		S.G.		PX-442 B
FINISH & SPEC. NO.		ELEC. DES. APP. MECH. DES. APP.		