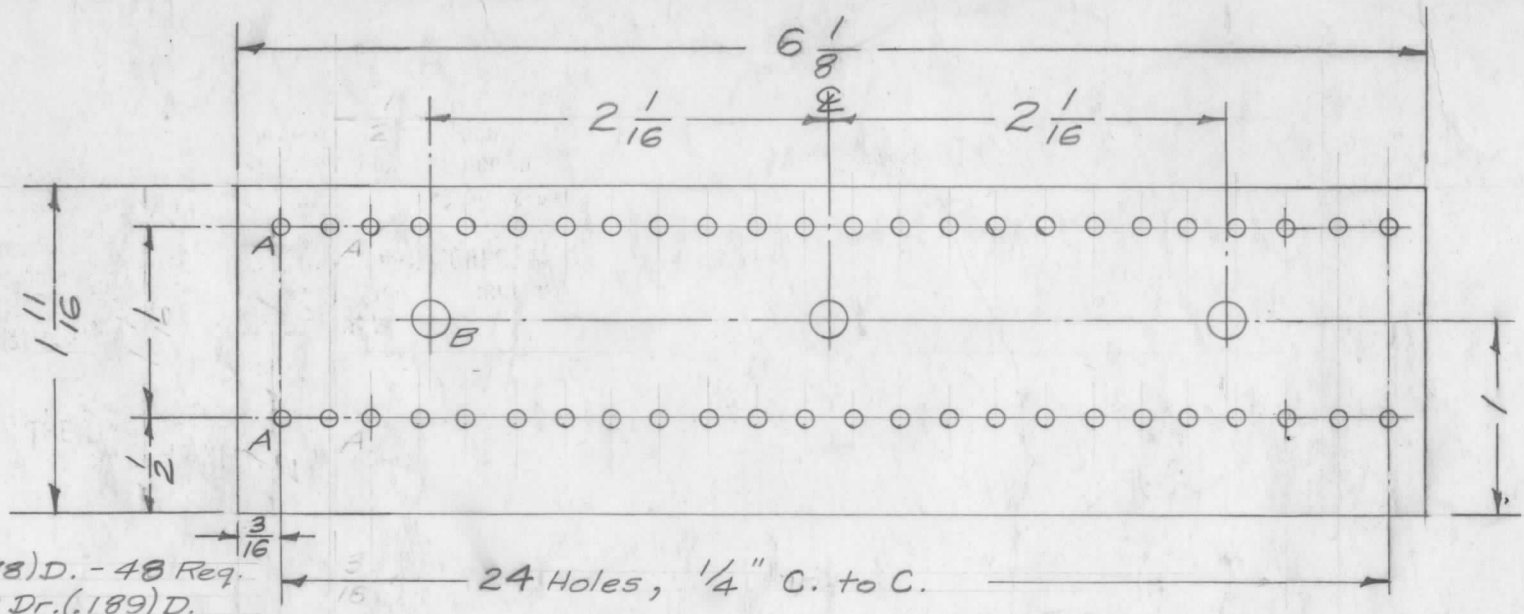
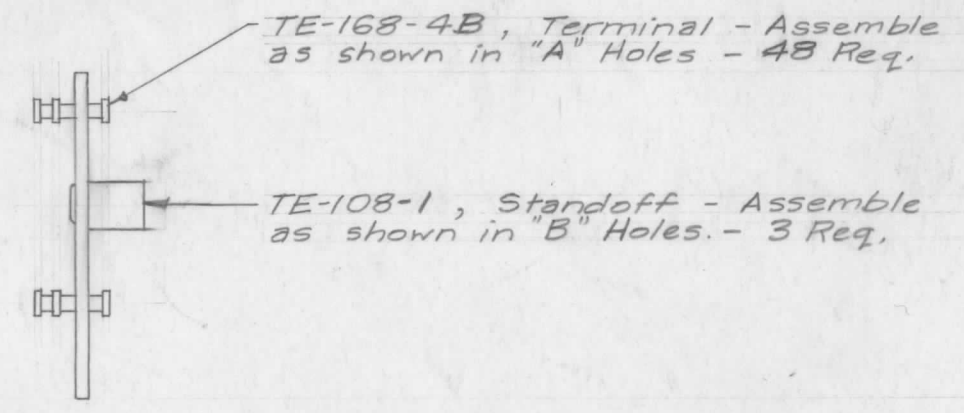


PX-381 A



A- $\frac{5}{64}$ (.078) D. - 48 Req.
 B- No. 12 Dr. (.189) D. - 3 Req.

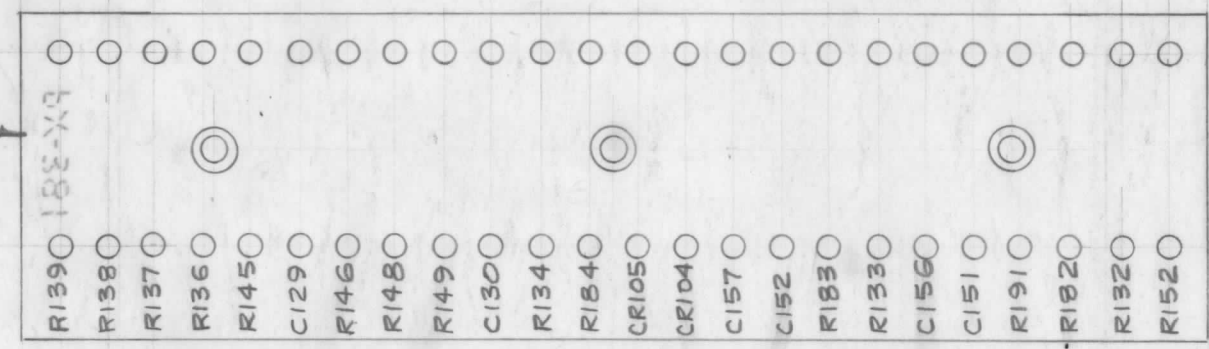
Machining, Terminal Bd.



TE-168-4B, Terminal - Assemble as shown in "A" Holes - 48 Req.
 TE-108-1, Standoff - Assemble as shown in "B" Holes. - 3 Req.

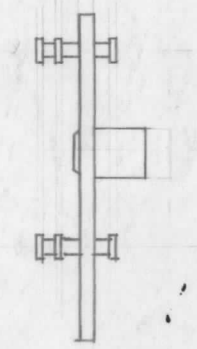
Assembly

STAMP "PX-381" on Rear



Stamp as shown, 1/2 high black Gothic

Stamping



A	1	B "A" Holes Added Stamping Added	10/29/57	1	16	23 MB
ISSUE	ITEM	CHANGED FROM	DATE	CH. NO.	DRAFTS	CHECKER
TOLERANCES		SCALE: 2-10+1				
DEC. DIM. ±	FRAC. DIM. ±	MAXIMUM ALLOWABLE TOLERANCES HAVE BEEN DETERMINED AND ANY DEVIATIONS WILL BE CAUSE FOR REJECTION. REMOVE ALL BURRS AND SHARP EDGES				
ANGULAR DIM. ±						

1	A-1516	SBE-2	A-1521 (2)	3/28/58
1	A-1396	SBE-1	A-1455 (2)	9/3/57
REQ. PER UNIT	MODEL	PROJECT NO.	ASS'Y. NO.	DATE
USED ON				

REQ. ITEM	PART NO.	DESCRIPTION		SYMBOL
1/16 Thk.		THE TECHNICAL MATERIEL CORP.		
STOCK SIZE		MAMARONECK, NEW YORK		
Phenolic		TERMINAL BOARD,		
MATERIAL		SQUELCH & VOX (SBE-1)		
xxxp Laminate	16 9/3/57	MD	APB	APB
TYPE & TEMPER	HEAT TREAT. SPEC.	DRAWN	CHECKED	FINAL APPROVAL
Natural		2B		PX-381 A
FINISH & SPEC. NO.	ELEC. DES. APP.	MECH. DES. APP.		