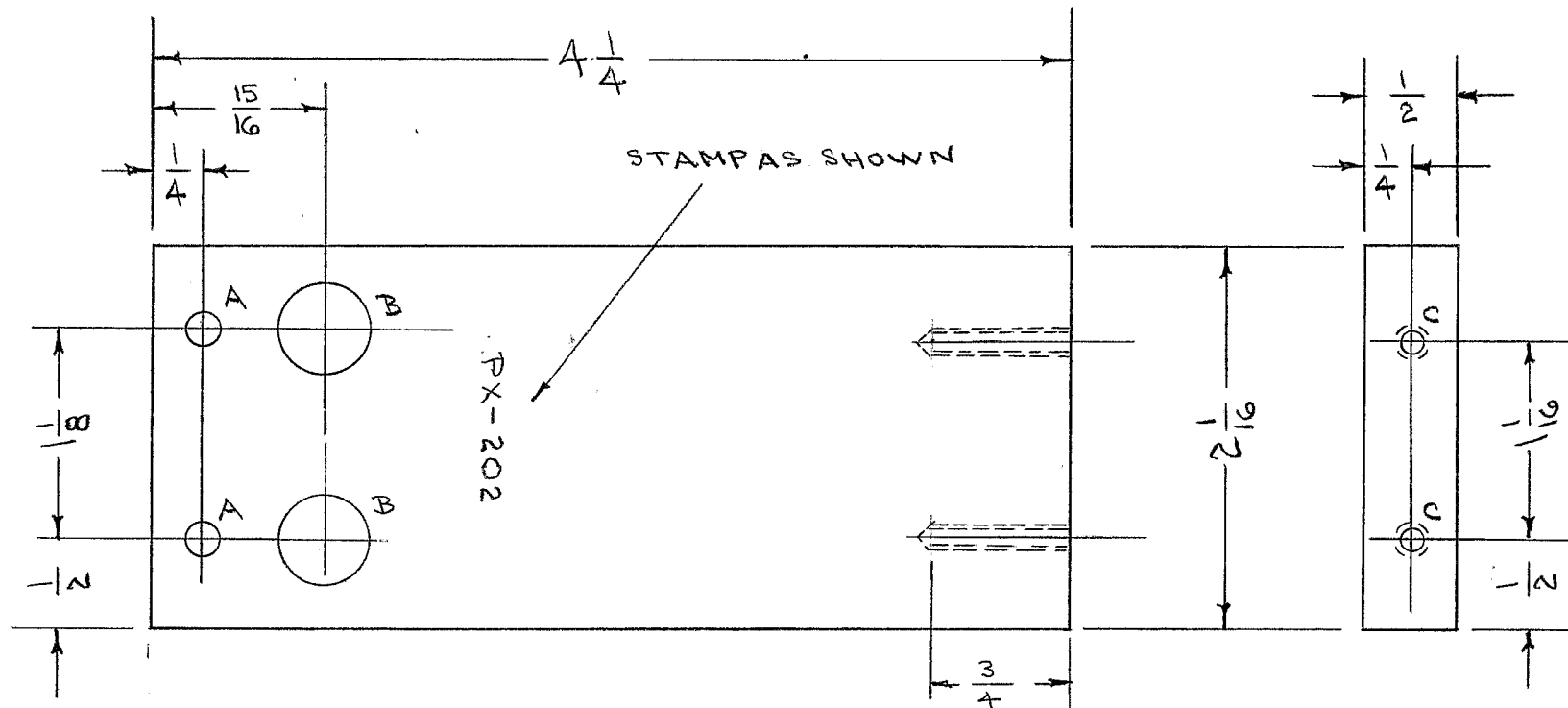


IF IT IS FOUND DESIRABLE TO CHANGE ANY TOLERANCE OR OTHER DETAIL SPECIFIED ON THIS DRAWING NOTIFY THE PURCHASER PROMPTLY.

PX-202

MAXIMUM ALLOWABLE TOLERANCES HAVE BEEN DETERMINED AND DEVIATIONS WILL BE CAUSE FOR REJECTION. REMOVE ALL BURRS AND SHARP EDGES

REQ PER UNIT	USED ON			
	MODEL	PROJECT NO.	ASS'Y. NO.	DATE
2	TAC-1	132	A-723	1-25-54



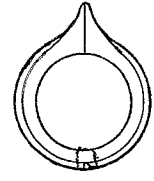
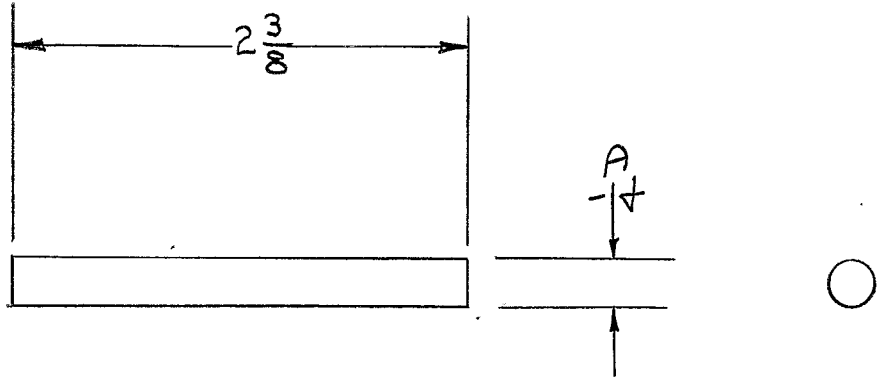
A- 3/16 (.187) D. 2 HOLES REQ.
 B- 1/2 (.500) D. 2 " " " " " "
 C- DRILL & TAP 10-24X3/4 DEEP 2 REQ.

REQ.	ITEM	PART NO.	DESCRIPTION	SYMBOL
		1/2 THK.	THE TECHNICAL MATERIEL CORP. MAMARONECK, NEW YORK	
		STOCK SIZE		
	PHENOLIC	---	TOP SUPPORT, RF. SWITCHES	
	MATERIAL	WEIGHT PER PC.	TAC-1	
	XXX LAMINATE		CDD.	ARB WDC
	TYPE & TEMPER		DRAWN	ELEC. DES. APP. MECH. DES. APP.
			FADE	ARB WDC
	HEAT TREAT. SPEC.		CHECKED	FINAL APPROVAL
	NATURAL		20	PX-202
	FINISH & SPEC. NO.			

ISSUE	ITEM	CHANGED FROM	DATE	CN. NO.	DRAFTS	CHECKER	ENG. APP.
A	1	4/4 WAS A5/16	3/17/54	1	CDD	JAL	WDC

ALL OTHERS	DEC. DIM. ± FRAC. DIM. ± 1/64 ANGULAR DIM. ±	SCALE	DRILL, PUNCH, COMMERCIAL STOCK SIZES AND MANUFACTURERS TOLERANCES ARE NOT INCLUDED.
------------	--	-------	---

PX-203



Bill Of Material

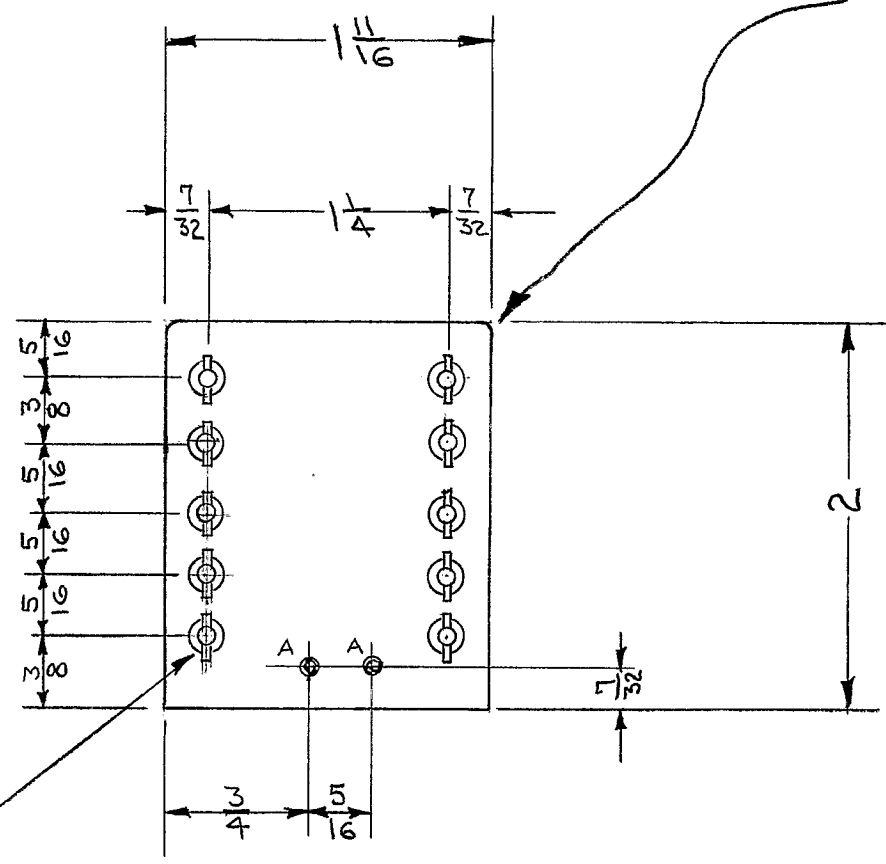
1/4 dia. x 2 3/8 Long phenolic rod	1 ea.
Harry Davies black knob # 1400 with pointer; 11/16 dia. x 13/32 height; 8-32 set screw.	1 ea.

REF S-194
Sheet 2 of 2

DATE <u>11/17/52</u>	Threshold Control Knob Kit Serial # 101 - 162 Model GFA Freq. Shift Conv.	THE TECHNICAL MATERIEL CORPORATION MAMARONECK, NEW YORK	
DRN. JAD			
CHKD.		SHEET 1	OF 1
APPD. PJB		NO <u>PX-203</u>	

10 x - 2004

Round off 2 Top corners Slightly



33 Drill - 10 Holes Req.
 Mount CTC-X1784D
 Terminals As Shown
 TE-109-3

Legend
 A = 4-40 Tap - 2 Holes Req.

REF: A-648

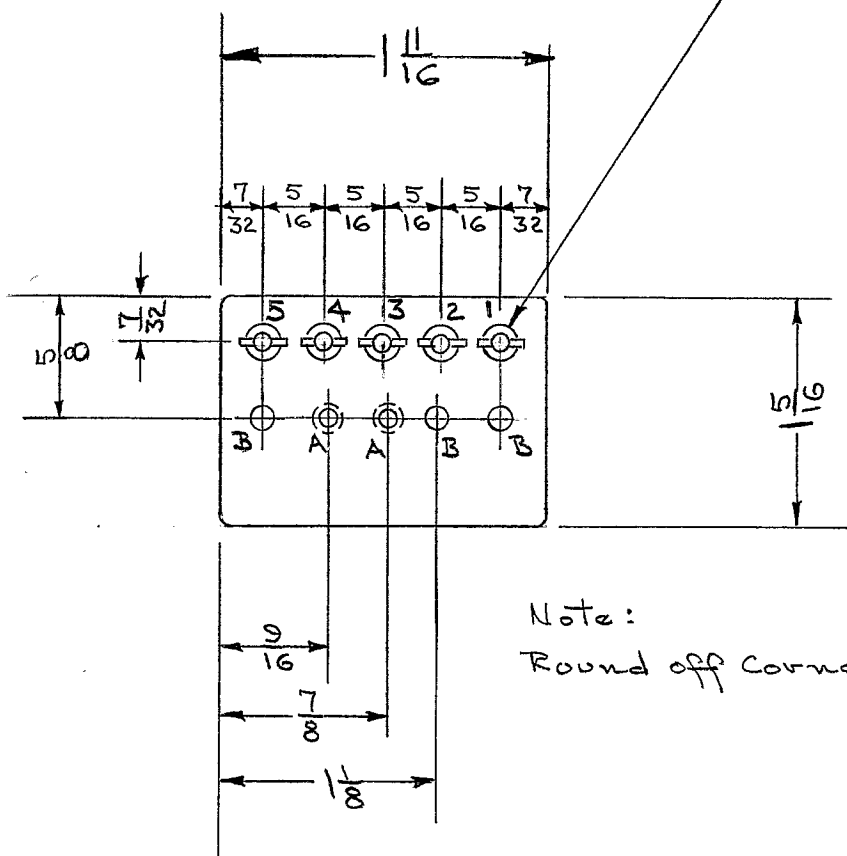
Required: One Per Unit
 Material: NEMA Grade XXXP Laminated Phenolic - 1/8 Thick

DATE 4-11-52	TERMINAL BD. # 1	THE TECHNICAL MATERIEL CORPORATION MAMARONECK, NEW YORK	
DRN. JAD	OSC. Modification Kit		
CHKD. W.D.C.	First Run Serial #101-162	SHEET OF NO. PX-204	
APPD. PJK	Model CFA		

502-XA

33 Drill - 5 Holes Req.
Mount CTC-X1784D
Terminals As Shown.

TE-109-3



Note:
Round off corners slightly.

Legend

- A = Drill + Tap - 4-40 - 2 Holes
- B = # 30 Drill - 3 Holes

Stamp Numbers On Terminals
5-4-3-2-1

REF: A-648

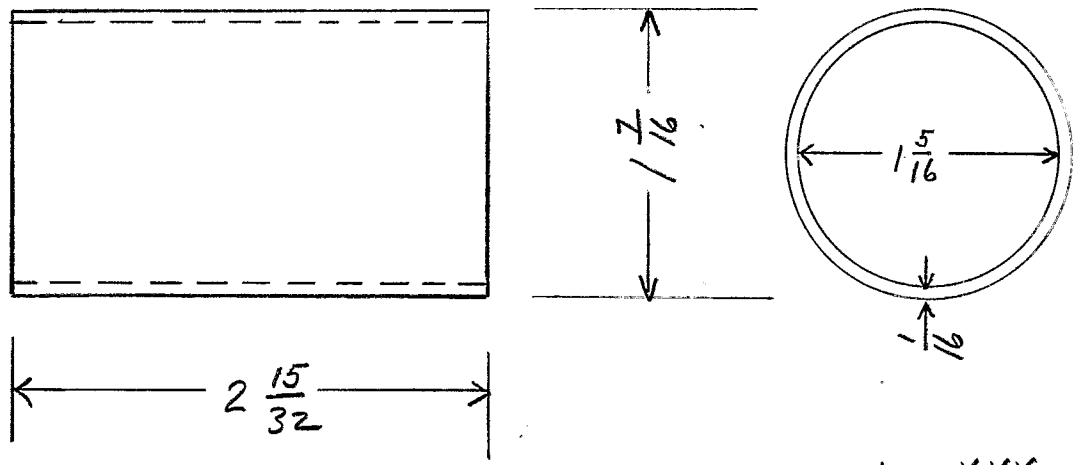
Required: One Per Unit

Material: NEMA, Grade XXXP, Laminated Phenolic - 1/8 Thick

DATE 4-11-52	TERMINAL BD # 2	THE TECHNICAL MATERIEL CORPORATION MAMARONECK, NEW YORK	
DRN. JAD	OSC. Modification Kit		
CHKD. WDE	First Run Serial #101-162	SHEET	OF
APPD. PAB	Model CFA		

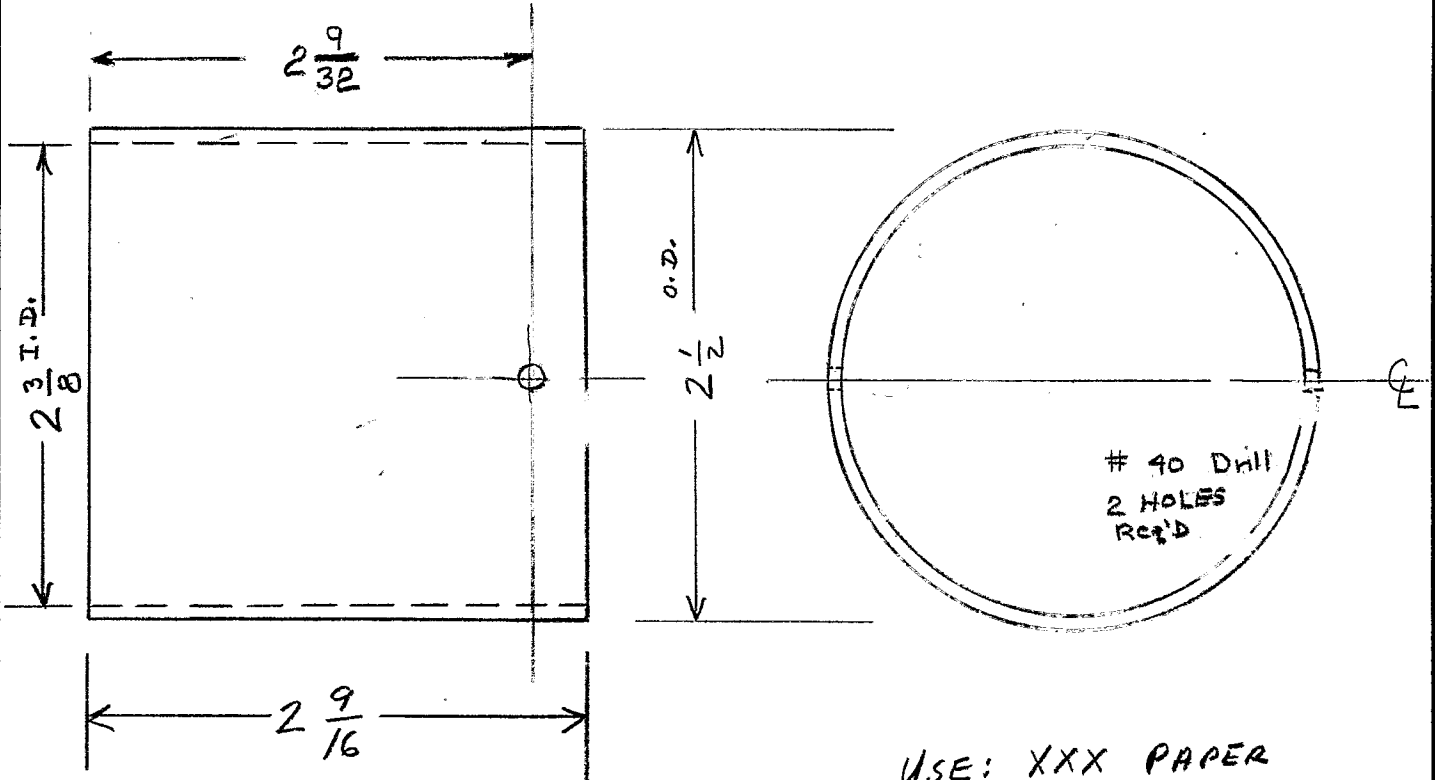
PX-208

PART C



USE: XXX PAPER
BASE PHENOLIC
ONE PER UNIT

PART D



40 Drill
2 HOLES
REQ'D

WAS AMS061
1/26/54

USE: XXX PAPER
BASE PHENOLIC
ONE PER UNIT

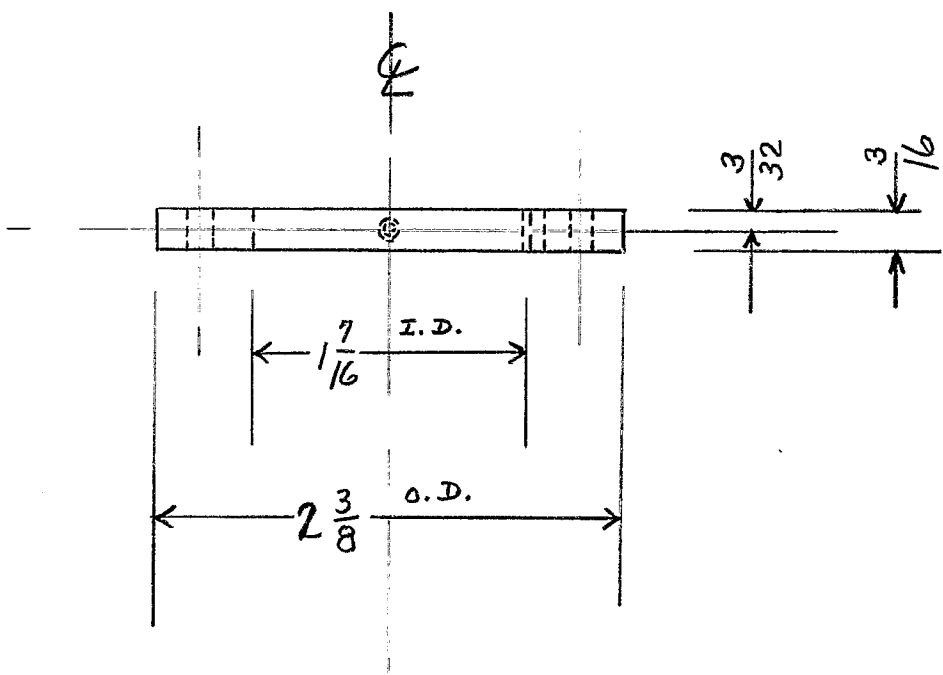
DATE JAN 24, 1951
 DRN. P.B.
 CHKD. H.B.B.
 APPD. *ha*

INNER AND OUTER YOKES.
 MAGNETIC DIODE COIL
 TAK-1

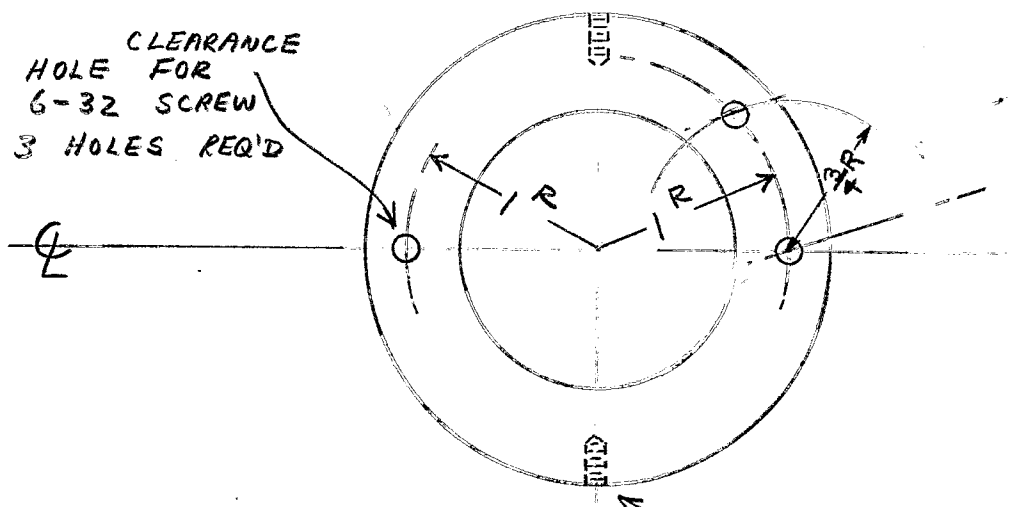
THE TECHNICAL MATERIEL
 CORPORATION
 MAMARONECK, NEW YORK

PART E

PX-209



CLEARANCE
HOLE FOR
6-32 SCREW
3 HOLES REQ'D

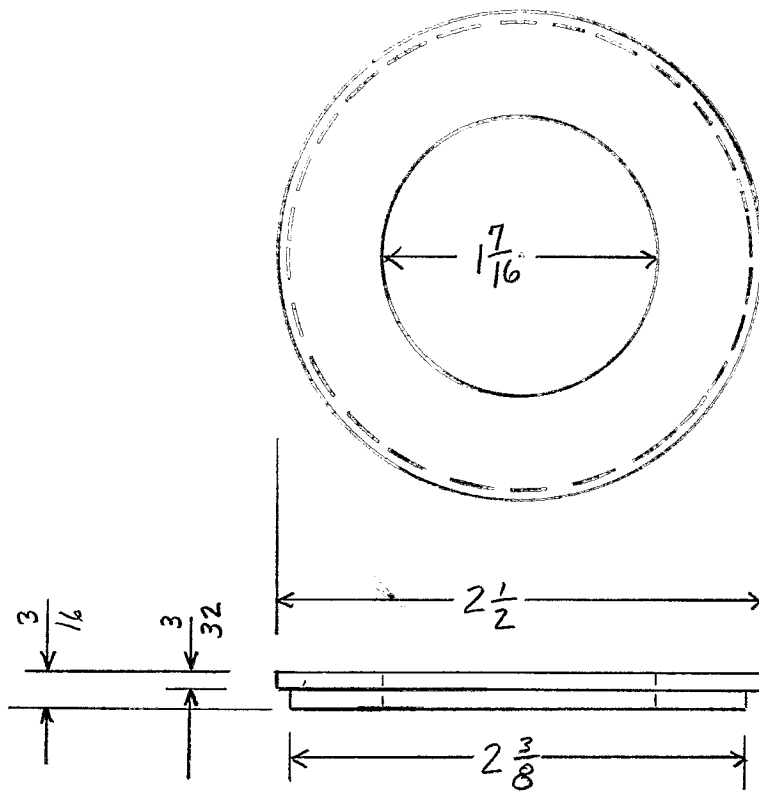


DRILL & TAP $\frac{1}{4}$ DEEP
FOR 2-56 SCREW
2 TAPPED HOLES REQ'D

USE: XXX PAPER BASE
PHENOLIC
ONE PER UNIT
WAS AMS060
1/26/54

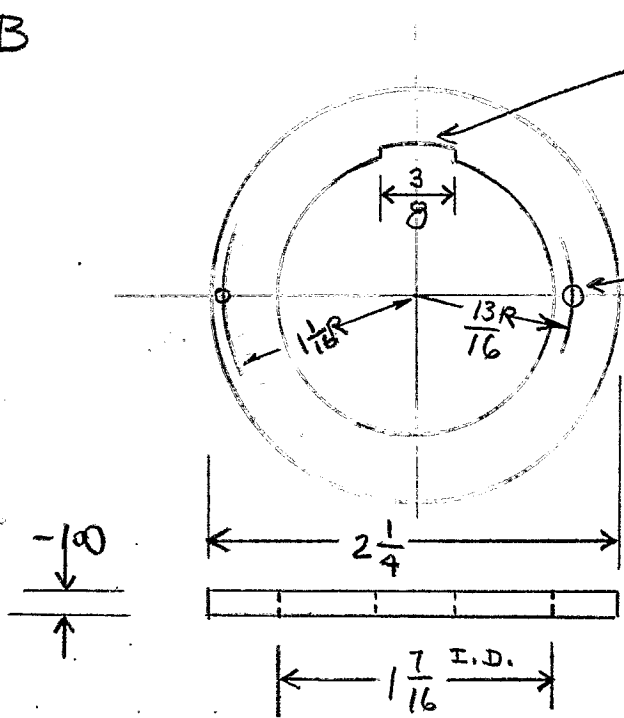
DATE JAN. 24, 1951	BOTTOM FLANGE MAGNETIC DIODE COIL TAK-1	THE TECHNICAL MATERIEL CORPORATION MAMARONECK, NEW YORK		
DRN. P. B.				
CHKD. H. R. C.				
APPD. <i>hu</i>				
		SHEET /	OF /	NO. PX-209

PART A



USE: XXX PAPER
BASE PHENOLIC
ONE PER UNIT

PART B



FILE SLOT $\frac{1}{16}$ " SO BRASS SHIM SHIELD CAN BE CONNECTED TO GROUND TERMINAL POST

#53 DRILL
2 HOLES REQ'D

USE: XXX PAPER
BASE PHENOLIC
ONE PER UNIT

WAS AMS059
1/26/54

DATE JAN 24, 1951
DRN. P.B.
CHKD. H.R.B.
APPD. *hm*

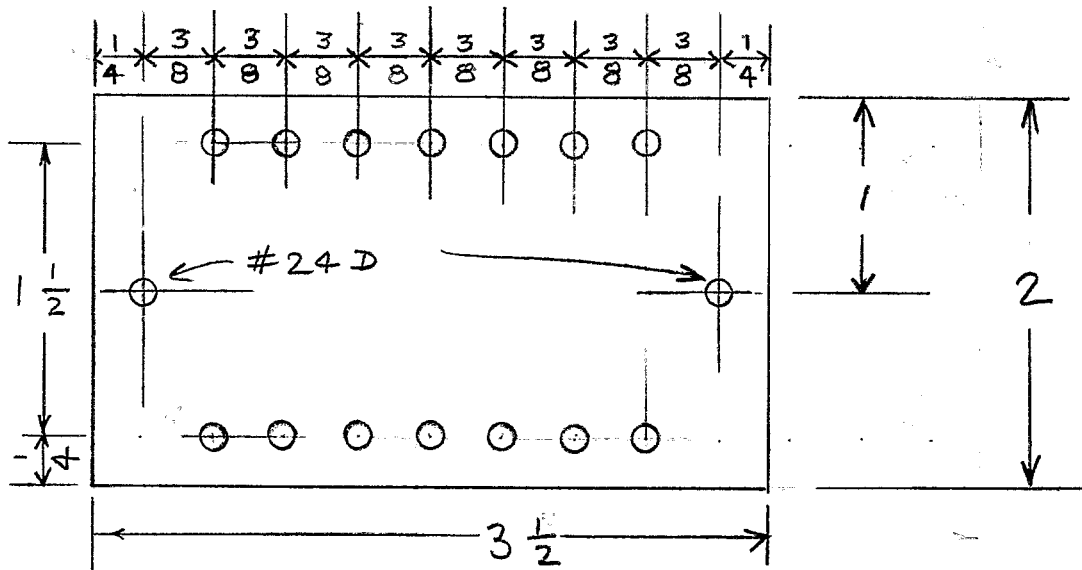
TOP AND CENTER FLANGES
MAGNETIC DIODE COIL
TAK-1

THE TECHNICAL MATERIEL
CORPORATION
MAMARONECK, NEW YORK

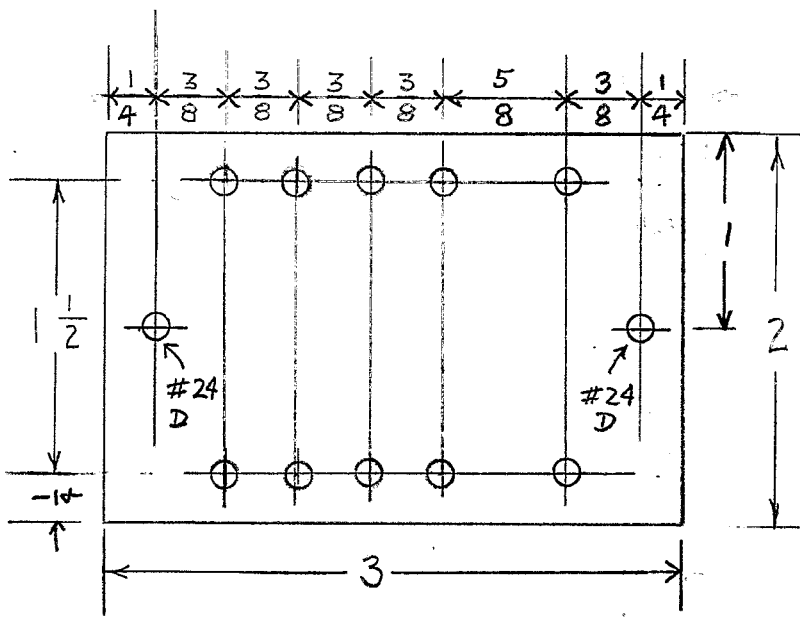
SHEET 1 OF 1 NO. PX-210

PX-211

15



Terminal Board #1



Terminal Board #2

Material xxx Natural
 Bakelite $\frac{1}{8}$ " Thick
 Terminals CTC-S1245D
 Terminal Mtg holes
 #33 Drill
 one each per unit

WAS AMS040
 1/26/54

DATE	1/4/51
DRN.	CMH
CHKD.	
APPD.	<i>hm</i>

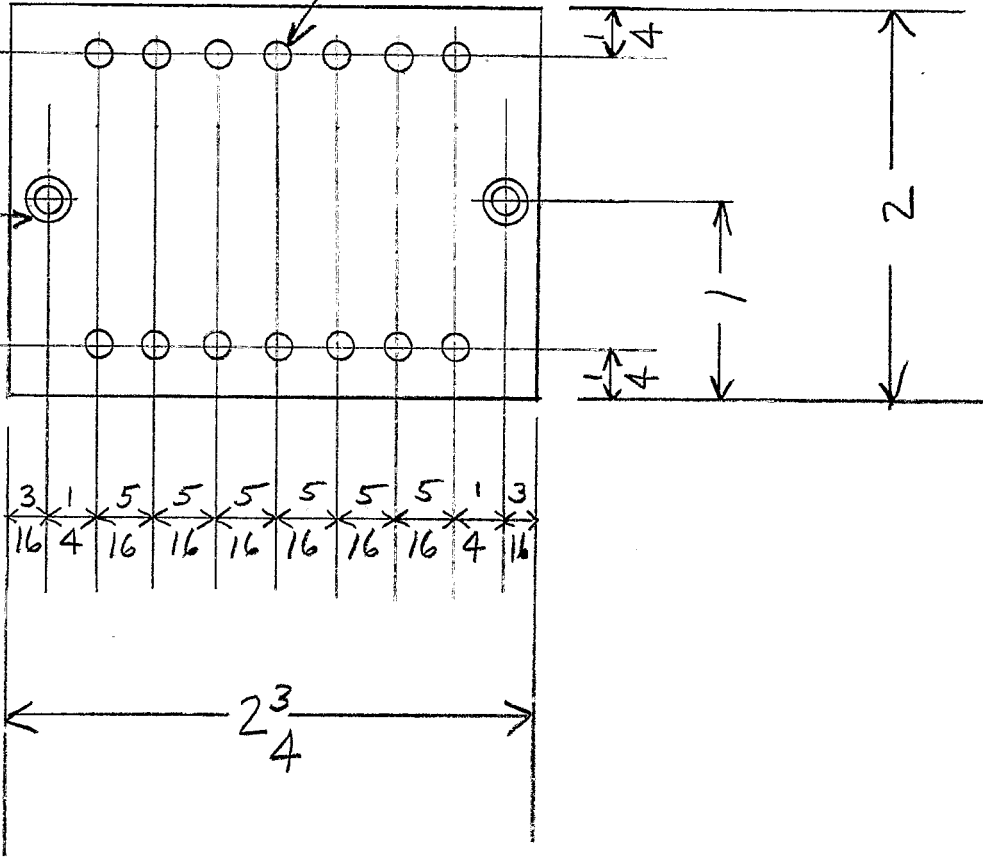
Terminal Boards
 Model TAK-1

THE TECHNICAL MATERIEL
 CORPORATION
 MAMARONECK, NEW YORK

PX-212

33 DRILL
14 HOLES

DRILL & CTSK
FOR
6-32
FLAT HEAD
2 HOLES



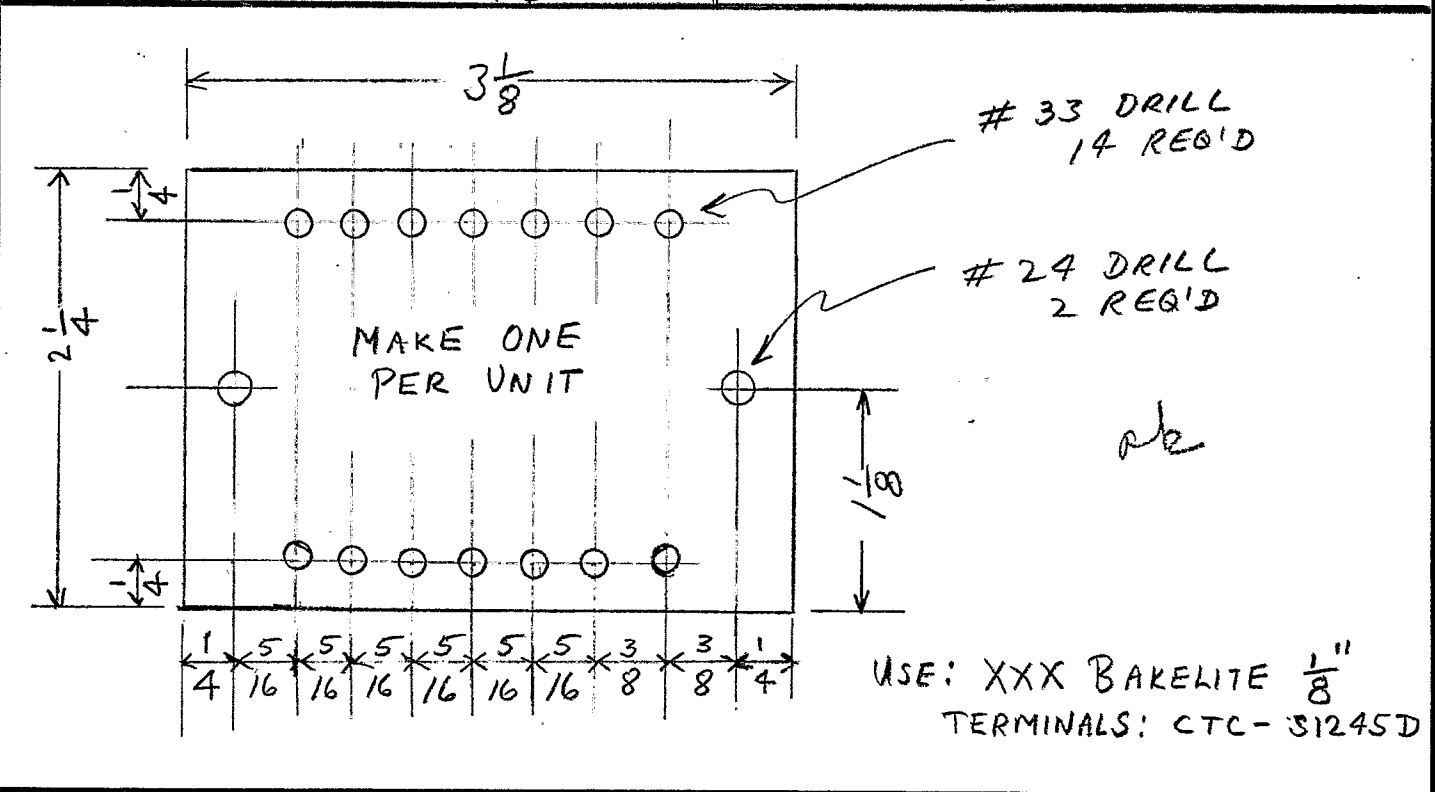
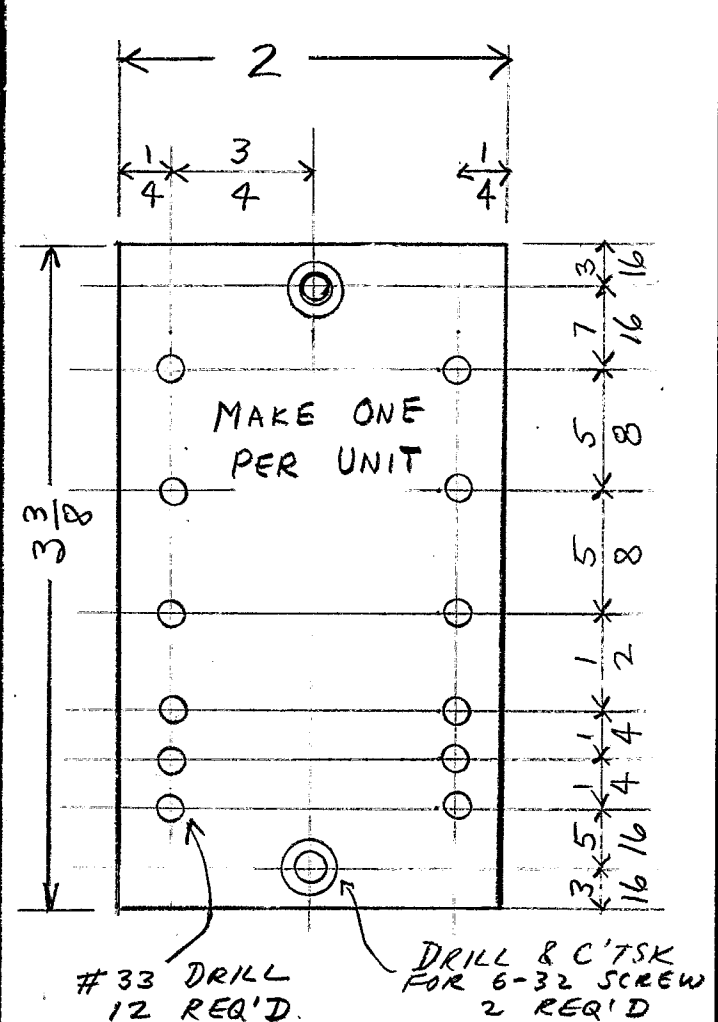
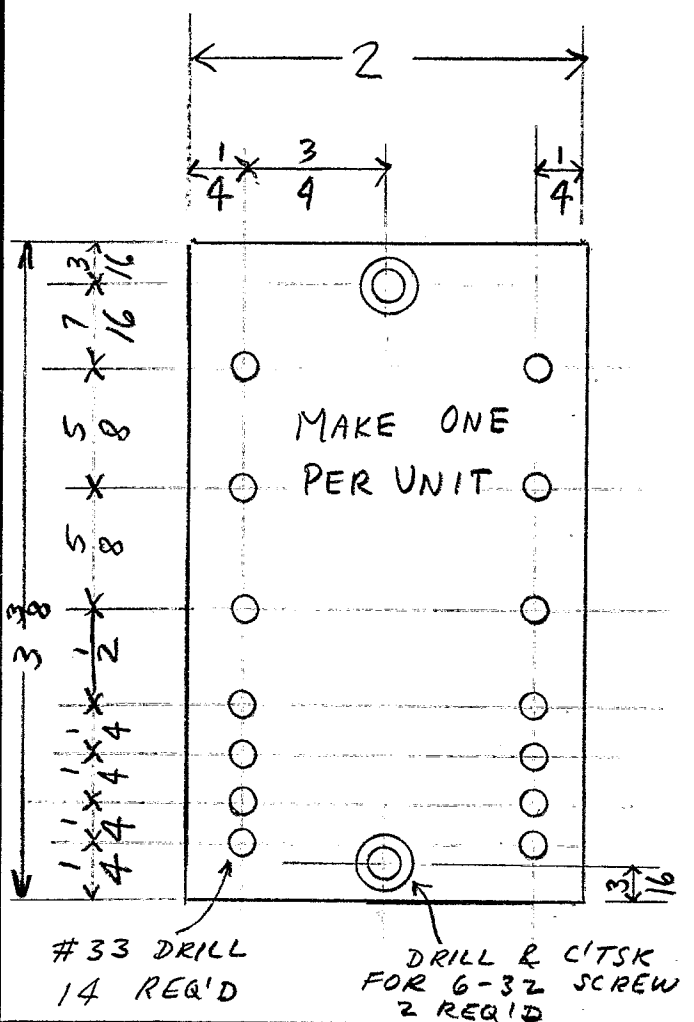
USE: XXX BAKELITE $\frac{1}{8}$ " THICK

TERMINALS: CTC - S1245D

MAKE ONE PIECE PER UNIT

DATE 3-1-51	RESISTOR TERMINAL BOARD	THE TECHNICAL MATERIEL CORPORATION	
DRN. P.B.	TONE TERMINAL RECEIVE	MAMARONECK, NEW YORK	
CHKD. L.B.	TKM - RC - 4	SHEET	OF
APPD. <i>hu</i>		NO. PX-212	

PX-213

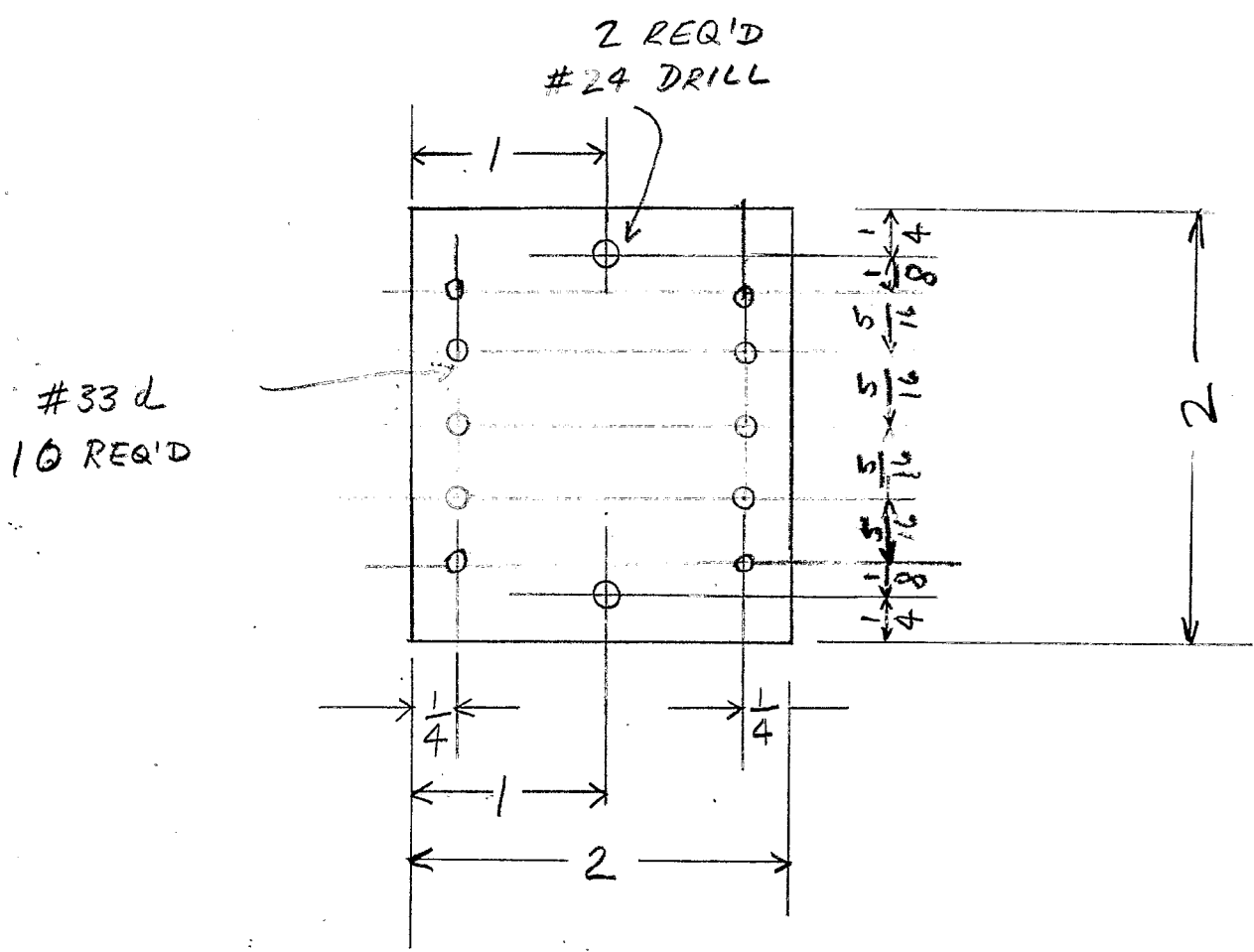


DATE JAN. 19, 1951
 DRN. P. B.
 CHKD. R. B.
 APPD. *AM*

TERMINAL BOARDS
 TONE TERMINAL
 TRANSMIT
 TKM-TC

THE TECHNICAL MATERIEL
 CORPORATION
 MAMARONECK, NEW YORK
 SHEET OF NO. PX-213

PX-214



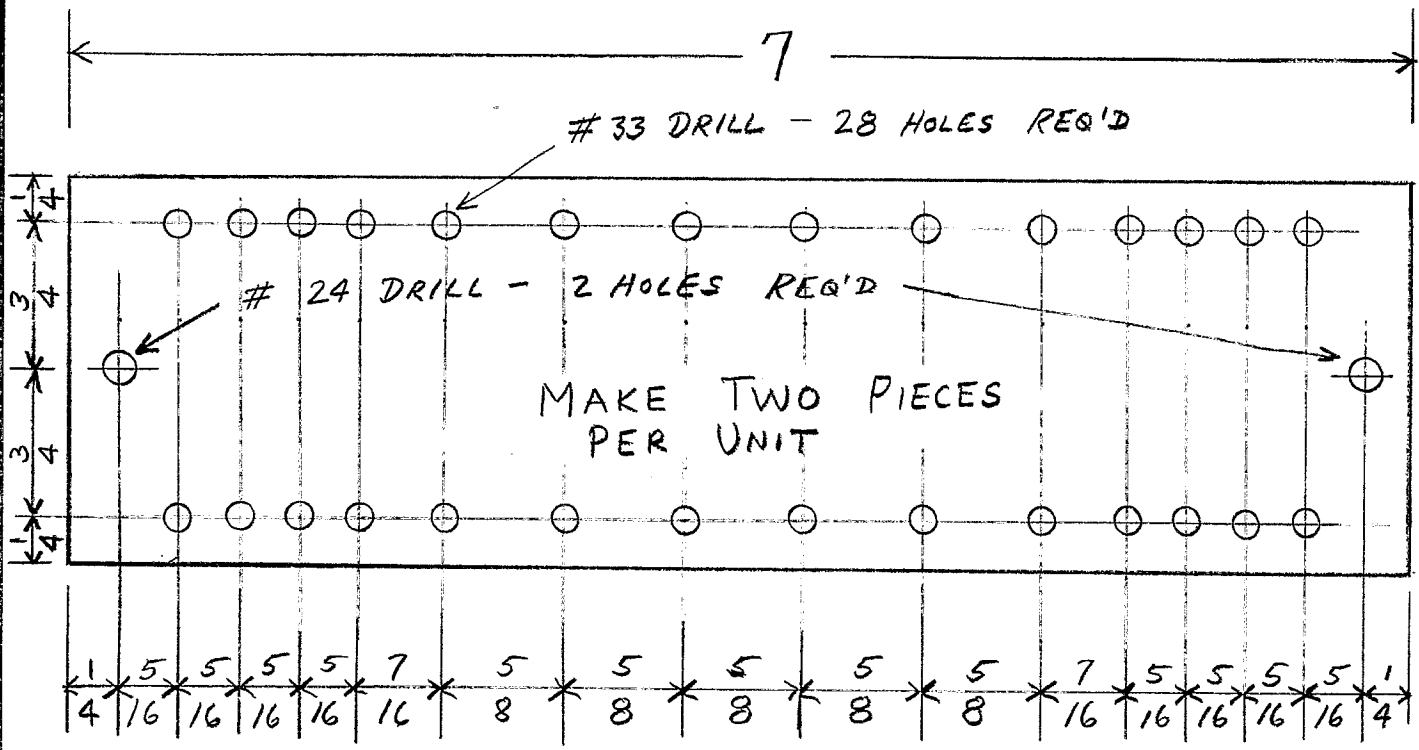
USE: XXX BAKELITE $\frac{1}{8}$ " THICK
 TERMINALS CTC - S1245 D

ONE PER UNIT

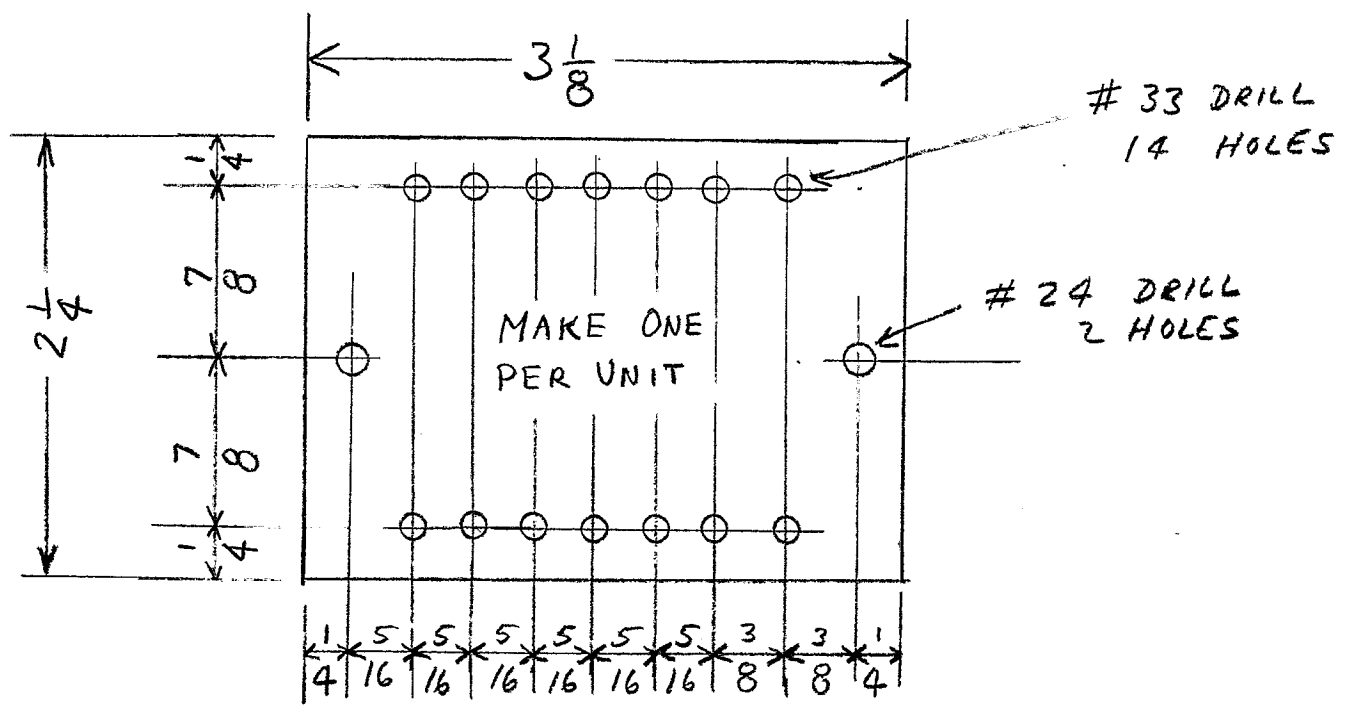
WAS AMS055
 1/27/54

DATE JAN 15, 1951	RECEIVING COMBINING UNIT TKM- RC RESISTOR TERMINAL BOARD	THE TECHNICAL MATERIEL CORPORATION MAMARONECK, NEW YORK	
DRN. P. B.			
CHKD. R. B.			
APPD. <i>[Signature]</i>			

PX-215



1/4 * 5/16 * 5/16 * 5/16 * 5/16 * 7/16 * 5/8 * 5/8 * 5/8 * 5/8 * 5/8 * 7/16 * 5/16 * 5/16 * 5/16 * 5/16 * 1/4



1/4 * 5/16 * 5/16 * 5/16 * 5/16 * 5/16 * 3/8 * 3/8 * 1/4

was AMS041
2/1/54

USE: XXX BAKELITE 1/8"
TERMINALS: CTC-31245 D

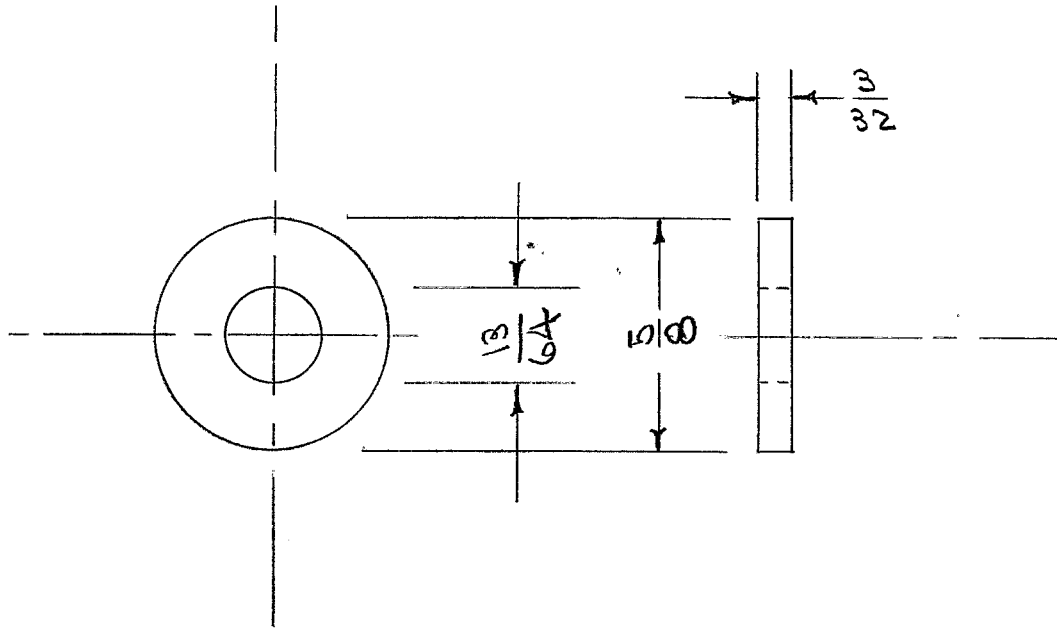
DATE	2-27-51	TERMINAL BOARDS TONE TERMINAL TRANSMIT TKM-TC-4	THE TECHNICAL MATERIEL CORPORATION MAMARONECK, NEW YORK	
DRN.	P.B.			
CHKD.	L.B.		NO. PX-215	
APPD.	<i>AM</i>			

IF IT IS FOUND DESIRABLE TO CHANGE ANY TOLERANCE OR OTHER DETAIL SPECIFIED ON THIS DRAWING NOTIFY THE PURCHASER PROMPTLY.

PX-222 C

MAXIMUM ALLOWABLE TOLERANCES HAVE BEEN DETERMINED AND DEVIATIONS WILL BE CAUSE FOR REJECTION. REMOVE ALL BURRS AND SHARP EDGES

REQ. PER UNIT	USED ON			
	MODEL	PROJECT NO.	ASS'Y. NO.	DATE
3	TAC-1	132	A-720 A-722	1-14-54



ISSUE	ITEM	CHANGED FROM	DATE	CN. NO.	DRAFTS	CHECKER	ENG. APP.
C	3	5/8 WAS 1/2	8/4/54	3	EOD	Hilde	WDE
	2	13/64 WAS 1/4					
	1	3/32 " .003 ±.005					
B	1	WAS G PER UNIT	7/23/54	2	EOD	Hilde	WDE
A	1	±.005 WAS ±.002	5-12-54	1	EOD	Hilde	WDE

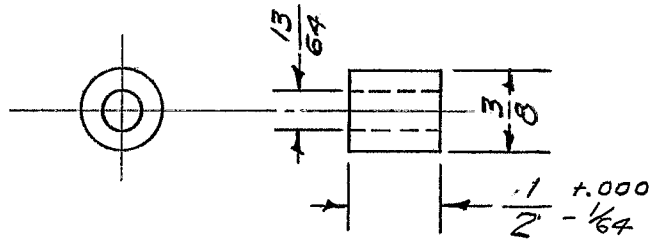
REQ.	ITEM	PART NO.	DESCRIPTION	SYMBOL
			5/8 D. ROD.	
STOCK SIZE			THE TECHNICAL MATERIEL CORP. MAMARONECK, NEW YORK	
		TEFLON	WASHER, TEFLON	
MATERIAL		WEIGHT PER PC.	TAC-1	
TYPE & TEMPER			EOD.	WDE
HEAT TREAT. SPEC.			DRAWN	ELEC. DES. APP. MECH. DES. APP.
FINISH & SPEC. NO.			Hilde	WDE
			CHECKED	FINAL APPROVAL
			PX-222 C	

IF IT IS FOUND DESIRABLE TO CHANGE ANY TOLERANCE OR OTHER DETAIL SPECIFIED ON THIS DRAWING NOTIFY THE PURCHASER PROMPTLY.

PX-223 B

MAXIMUM ALLOWABLE TOLERANCES HAVE BEEN DETERMINED AND DEVIATIONS WILL BE CAUSE FOR REJECTION. REMOVE ALL BURRS AND SHARP EDGES

AMT PER UNIT	MODEL	USED ON		
		PROJECT NO.	ASS'Y. NO.	DATE
3	TAC-1	132	A-120	1-14-54



REQ.	ITEM	PART NO.	DESCRIPTION	SYMBOL
		$\frac{7}{16}$ DIA.	THE TECHNICAL MATERIEL CORP.	
		STOCK SIZE	MAMARONECK, NEW YORK	
		TEFLON	BUSHING, TEFLON	
		MATERIAL	TAC-1	
		WEIGHT PER PC.	16	
		TYPE & TEMPER	ARB	
			DRAWN	ELEC. DES. APP.
			MECH. DES. APP.	
		HEAT TREAT. SPEC.	ARB	
			CHECKED	FINAL APPROVAL
		FINISH & SPEC. NO.	PX-223	B

ISSUE	ITEM	CHANGED FROM	DATE	CN. NO.	DRAFTS	CHECKER	ENG. APP.
B	1	Completely Revised	8/25/57	2	Fe.	WLO	WLO
A	1	Y4 WAS 13/64	9/15/54	1	CD	WLO	WLO

TOLERANCES		SCALE
ALL OTHERS	DEC. DIM. \pm FRAC. DIM. \pm ANGULAR DIM. \pm	FULL
DRILL, PUNCH, COMMERCIAL STOCK SIZES AND MANUFACTURERS TOLERANCES ARE NOT INCLUDED.		

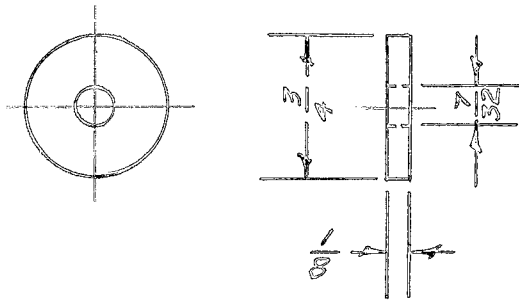
IF IT IS FOUND DESIRABLE TO CHANGE ANY TOLERANCE OR OTHER DETAIL SPECIFIED ON THIS DRAWING NOTIFY THE PURCHASER PROMPTLY.

PX-224 A

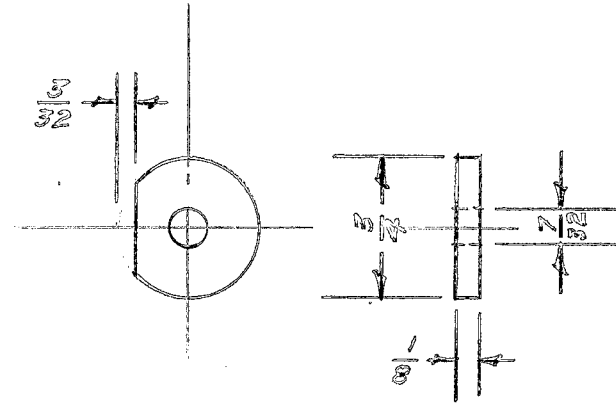
MAXIMUM ALLOWABLE TOLERANCES HAVE BEEN DETERMINED AND DEVIATIONS WILL BE CAUSE FOR REJECTION. REMOVE ALL BURRS AND SHARP EDGES

USED ON

AMT. PER UNIT	MODEL	PROJECT NO.	ASSY. NO.	DATE
SEE NOTE	TAC-1	132	A-787	1-28-54



PX-224-1
4 PER UNIT



PX-224-2
4 PER UNIT

REQ.	ITEM	PART NO.	DESCRIPTION	SYMBOL
		5/16" D.	THE TECHNICAL MATERIEL CORP. MAMARONECK, NEW YORK	
		STOCK SIZE		
		TEFLON	WASHER, CONDENSOR SUPPORT	
		MATERIAL	WEIGHT PER PC.	
			TAC-1	
		TYPE & TEMPER	16	amb
			DRAWN	W.E.T.
			ELEC. DES. APP.	
			MECH. DES. APP.	
		HEAT TREAT. SPEC.	checked	
			CHECKED	
		FINISH & SPEC. NO.	FINAL APPROVAL	
			PX-224 A	

A	1	PX-224-2 ADDED	1/15/54	1	15	J.A.D.	W.D.E.
ISSUE	ITEM	CHANGED FROM	DATE	CN. NO.	DRAFTS	CHECKER	ENG. APP.

TOLERANCES

SCALE FULL

ALL OTHERS

DEC. DIM. ±
FRAC. DIM. ±
ANGULAR DIM. ±

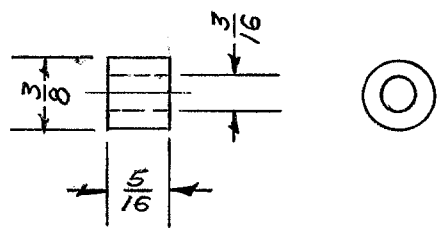
DRILL, PUNCH, COMMERCIAL STOCK
SIZES AND MANUFACTURERS
TOLERANCES ARE NOT INCLUDED.

IF IT IS FOUND DESIRABLE TO CHANGE ANY TOLERANCE OR OTHER DETAIL SPECIFIED ON THIS DRAWING NOTIFY THE PURCHASER PROMPTLY.

PX-225

MAXIMUM ALLOWABLE TOLERANCES HAVE BEEN DETERMINED AND DEVIATIONS WILL BE CAUSE FOR REJECTION. REMOVE ALL BURRS AND SHARP EDGES

AMT. PER UNIT	MODEL	USED ON		
		PROJECT NO.	ASS'Y. NO.	DATE
4	TAC-1	132	A-787	1-28-54



REQ.	ITEM	PART NO.	DESCRIPTION	SYMBOL
		3/8" D. STOCK SIZE	THE TECHNICAL MATERIEL CORP. MAMARONECK. NEW YORK	
		TEFLON	BUSHING, CONDENSOR SUPPORT	
		MATERIAL	TAC-1	
		WEIGHT PER PC.	16	
		TYPE & TEMPER	ARB	
		HEAT TREAT. SPEC.	ARB	
		FINISH & SPEC. NO.	ARB	

ISSUE	ITEM	CHANGED FROM	DATE	CN. NO.	DRAFTS	CHECKER	ENG. APP.
TOLERANCES			SCALE FULL				
ALL OTHERS	DEC. DIM. ±	DRILL, PUNCH, COMMERCIAL STOCK SIZES AND MANUFACTURERS TOLERANCES ARE NOT INCLUDED.					
	FRAC. DIM. ±						
	ANGULAR DIM. ±						

IF IT IS FOUND DESIRABLE TO CHANGE ANY TOLERANCE OR OTHER DETAIL SPECIFIED ON THIS DRAWING NOTIFY THE PURCHASER PROMPTLY.

PX-228

A

MAXIMUM ALLOWABLE TOLERANCES HAVE BEEN DETERMINED AND DEVIATIONS WILL BE CAUSE FOR REJECTION. REMOVE ALL BURRS AND SHARP EDGES

REQ. PER UNIT

USED ON

MODEL

PROJECT NO.

ASS'Y. NO.

DATE

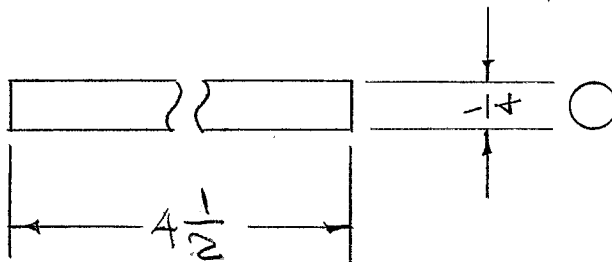
1

TAC-1

132

SW-145

12-21-54



REQ.	ITEM	PART NO.	DESCRIPTION	SYMBOL
		1/4 DIA.	THE TECHNICAL MATERIEL CORP. MAMARONECK. NEW YORK	
		STOCK SIZE		
		MELEMIN	SHAFT, BAND SWITCH	
		MATERIAL WEIGHT PER PC.	TAC-1	
			C.I.D.D.	
		TYPE & TEMPER	APB	WDC
			DRAWN	ELEC. DES. APP. MECH. DES. APP.
			APB	WDC
		HEAT TREAT. SPEC.	CHECKED	FINAL APPROVAL
		FINISH & SPEC. NO.	PX-228	A

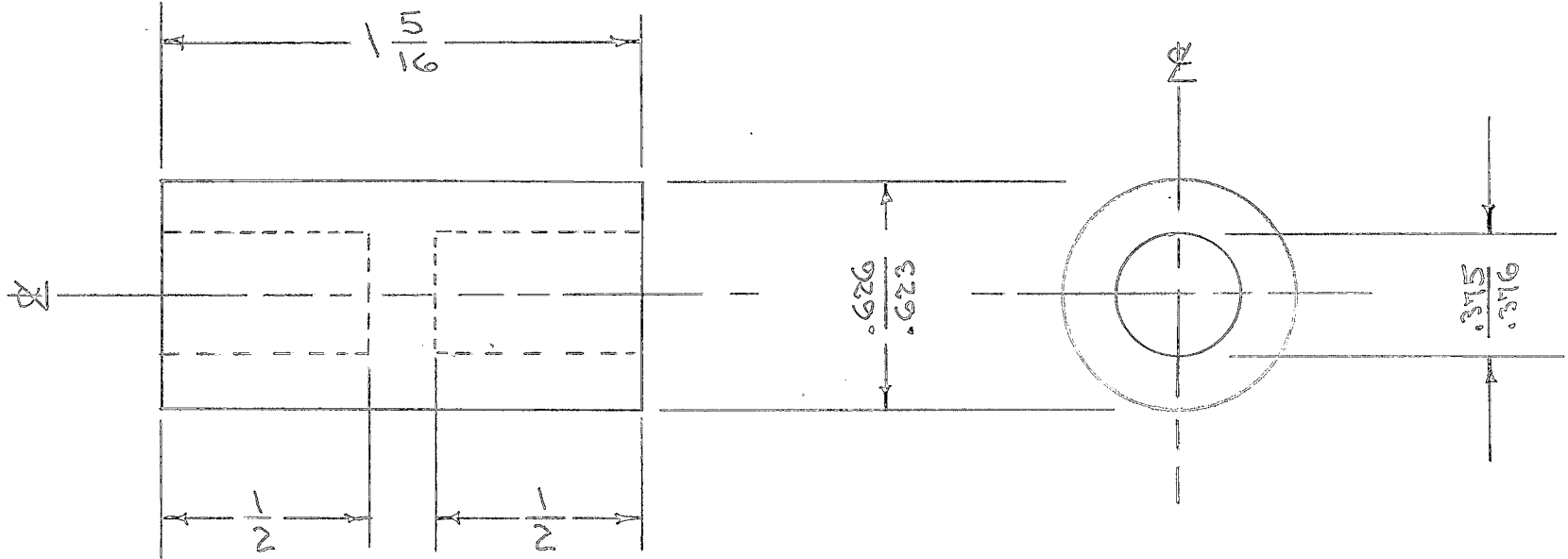
ISSUE	ITEM	CHANGED FROM	DATE	CN. NO.	DRAFTS	CHECKER	ENG. APP.
A	1	4 1/2 WAS 4 1/4	3/18/54	1	ADD.	WDC	
TOLERANCES			SCALE				
ALL OTHERS	DEC. DIM. ± FRAC. DIM. ± 1/32 ANGULAR DIM. ±		DRILL, PUNCH, COMMERCIAL STOCK SIZES AND MANUFACTURERS TOLERANCES ARE NOT INCLUDED.				

IF IT IS FOUND DESIRABLE TO CHANGE ANY TOLERANCE OR OTHER DETAIL SPECIFIED ON THIS DRAWING NOTIFY THE PURCHASER PROMPTLY.

PX-230 B

MAXIMUM ALLOWABLE TOLERANCES HAVE BEEN DETERMINED AND DEVIATIONS WILL BE CAUSE FOR REJECTION. REMOVE ALL BURRS AND SHARP EDGES

REQ. PER UNIT	USED ON			
	MODEL	PROJECT NO.	ASS'Y. NO.	DATE
1	TAC-1	132	A-716	1-4-54



B	1	375/376 WAS 376/378	3/1/54	2	C.D.D.	WAB	WDE
A	1	1/2 WAS 3/16	3/10/54	1	CDD	WAB	WDE

ISSUE	ITEM	CHANGED FROM	DATE	CN. NO.	DRAFTS	CHECKER	ENG. APP.
TOLERANCES		SCALE $\frac{1}{1}$					
ALL OTHERS	DEC. DIM. \pm $\frac{1}{64}$ FRAC. DIM. \pm ANGULAR DIM. \pm	DRILL, PUNCH, COMMERCIAL STOCK SIZES AND MANUFACTURERS TOLERANCES ARE NOT INCLUDED.					

REQ.	ITEM	PART NO.	DESCRIPTION	SYMBOL
		5/8 D	THE TECHNICAL MATERIEL CORP.	
		STOCK SIZE	MAMARONECK, NEW YORK	
		TEFLON	INSULATOR, CONNECTING BUSHING	
		MATERIAL	WEIGHT PER PC.	
			TAC-1	
		TYPE & TEMPER	C.D.D.	WDE
			DRAWN	ELEC. DES. APP. MECH. DES. APP.
			CHECKED	FINAL APPROVAL
		HEAT TREAT. SPEC.		
		FINISH & SPEC. NO.		

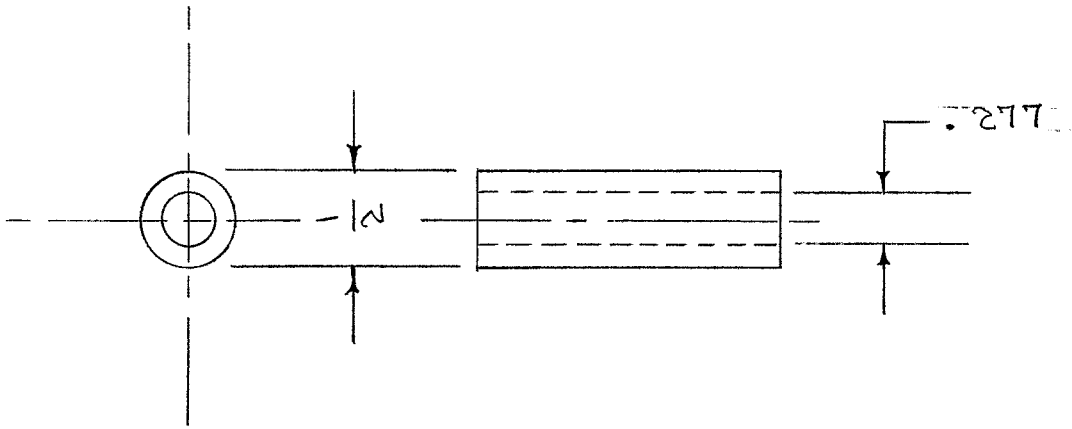
PX-230 B

IF IT IS FOUND DESIRABLE TO CHANGE ANY TOLERANCE OR OTHER DETAIL SPECIFIED ON THIS DRAWING NOTIFY THE PURCHASER PROMPTLY.

PX-231

MAXIMUM ALLOWABLE TOLERANCES HAVE BEEN DETERMINED AND DEVIATIONS WILL BE CAUSE FOR REJECTION. REMOVE ALL BURRS AND SHARP EDGES

REQ. PER UNIT	USED ON			
	MODEL	PROJECT NO.	ASS'Y. NO.	DATE
2	KS-85-X	J-277	A-500	4-26-54



REQ.	ITEM	PART NO.	DESCRIPTION	SYMBOL
		1/2 DIA.	THE TECHNICAL MATERIEL CORP. MAMARONECK, NEW YORK	
		STOCK SIZE		
		PHENOLIC	ROLLER, SPLICING JIG	
		MATERIAL		
		LINEN BASE		
		TYPE & TEMPER	CDD. 4-26-54	
			DRAWN	ELEC. DES. APP. MECH. DES. APP.
		HEAT TREAT. SPEC.	HECKED	FINAL APPROVAL
		NATURAL		PX-231
		FINISH & SPEC. NO.		

ISSUE	ITEM	CHANGED FROM	DATE	CN. NO.	DRAFTS	CHECKER	ENG. APP.

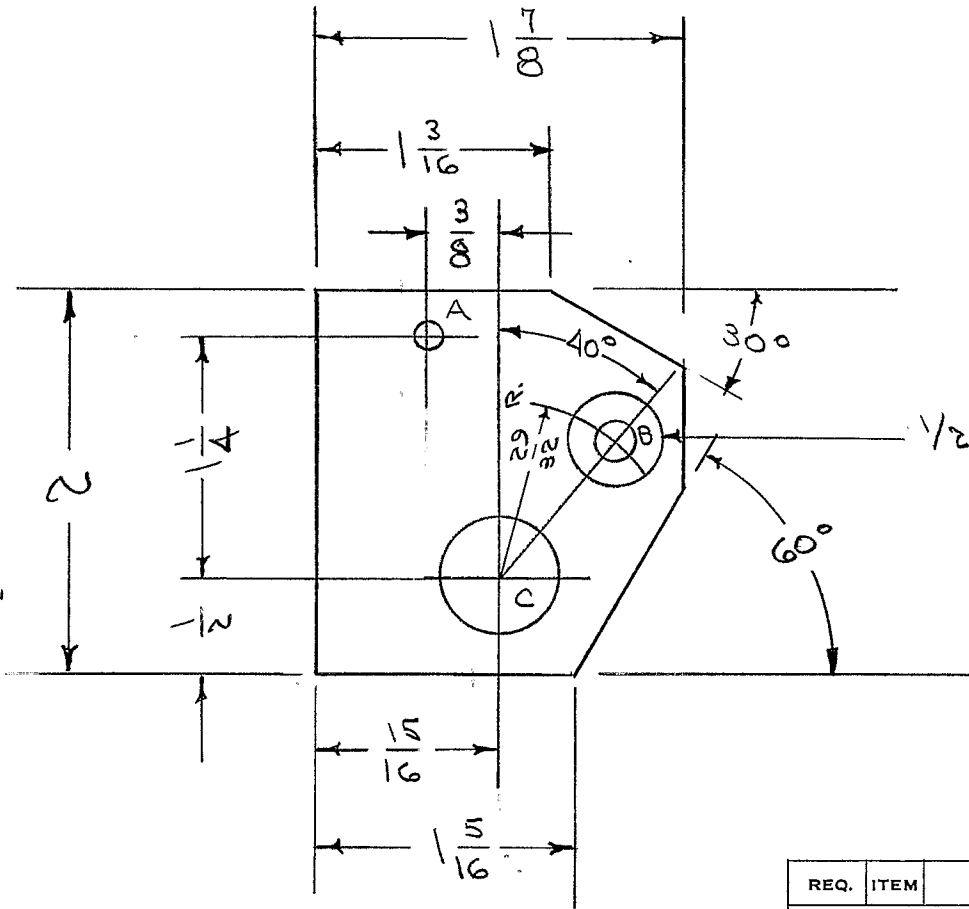
TOLERANCES	SCALE
ALL OTHERS DEC. DIM. ± FRAC. DIM. ± 1/64 ANGULAR DIM. ±	DRILL, PUNCH, COMMERCIAL STOCK SIZES AND MANUFACTURERS TOLERANCES ARE NOT INCLUDED.

IF IT IS FOUND DESIRABLE TO CHANGE ANY TOLERANCE OR OTHER DETAIL SPECIFIED ON THIS DRAWING NOTIFY THE PURCHASER PROMPTLY.

PX-236 B

MAXIMUM ALLOWABLE TOLERANCES HAVE BEEN DETERMINED AND DEVIATIONS WILL BE CAUSE FOR REJECTION. REMOVE ALL BURRS AND SHARP EDGES

REQ. PER. UNIT	USED ON			
	MODEL	PROJECT NO.	ASSY. NO.	DATE
1	TAC-1	132	A-722	7-30-54



A- 5/32 (.156) D. 1 HOLE REQ.
 B- NO. 13 (.185) Drill 1 " " "
 C 1/16 (.687) D. 1 " " "

1/2 C BORE X .109 DEEP

REQ.	ITEM	PART NO.	DESCRIPTION	SYMBOL
		1/4 THK.	THE TECHNICAL MATERIEL CORP.	
		STOCK SIZE	MAMARONECK, NEW YORK	
		TEFLON	SPACER PLATE,	
		MATERIAL	ROTOR SWITCH	TAC-1
		WEIGHT PER PC.	COD. 7-30-54	
		TYPE & TEMPER	DRAWN	ELEC. DES. APP.
		HEAT TREAT. SPEC.	CHECKED	MECH. DES. APP.
		FINISH & SPEC. NO.	FINAL APPROVAL	

B	2	#13 WAS 7/32	9/14	2	COO.	FAIR	WZ
	1	1/16 WAS 21/32					
A	1	21/32 WAS 5/8	8/14	1	COO.	FAIR	WZ
ISSUE	ITEM	CHANGED FROM	DATE	CN. NO.	DRAFTS	CHECKER	ENG. APP.

TOLERANCES		SCALE
ALL OTHERS	DEC. DIM. ± FRAC. DIM. ± 1/64 ANGULAR DIM. ±	DRILL, PUNCH, COMMERCIAL STOCK SIZES AND MANUFACTURERS TOLERANCES ARE NOT INCLUDED.

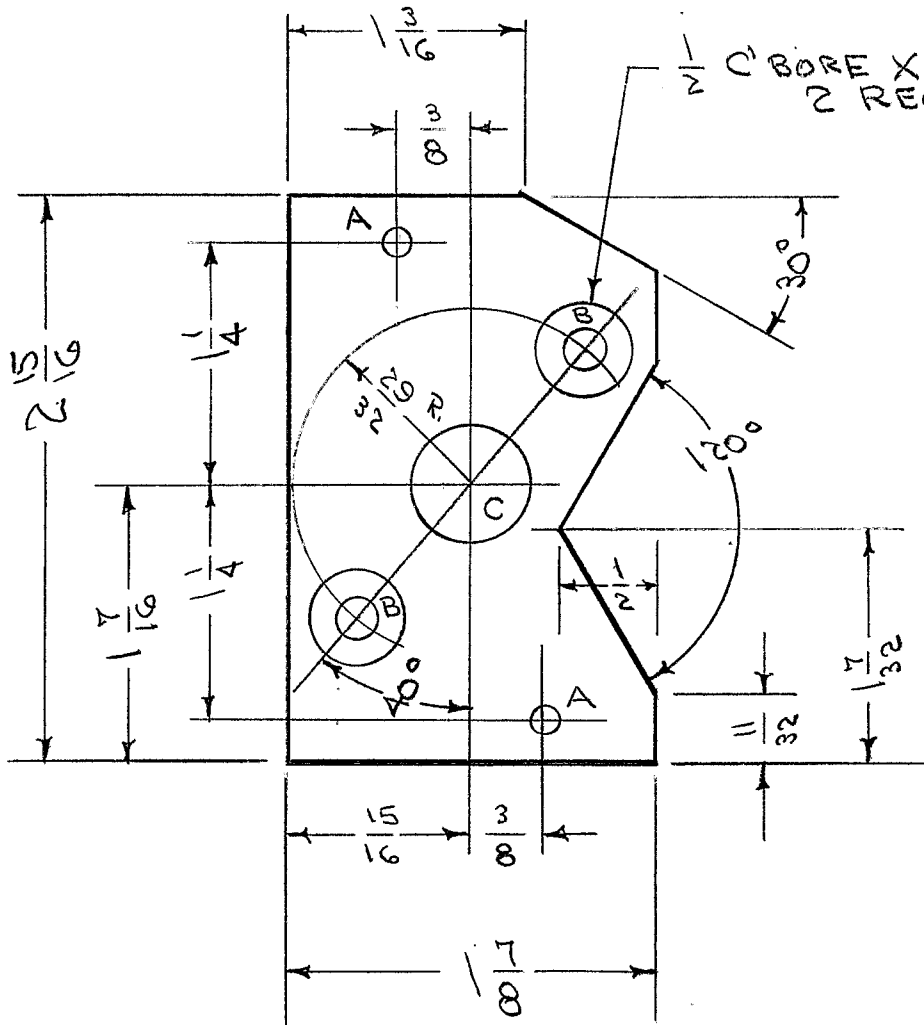
PX-236 B

IF IT IS FOUND DESIRABLE TO CHANGE ANY TOLERANCE OR OTHER DETAIL SPECIFIED ON THIS DRAWING NOTIFY THE PURCHASER PROMPTLY.

PX-237 A

MAXIMUM ALLOWABLE TOLERANCES HAVE BEEN DETERMINED AND DEVIATIONS WILL BE CAUSE FOR REJECTION. REMOVE ALL BURRS AND SHARP EDGES

REQ. PER UNIT	USED ON			
	MODEL	PROJECT NO.	ASS'Y. NO.	DATE
1	TAC-1	132	A-720	7-30-54



A - 5/32 (.156) DIA. 2 HOLES REQ.
 B - 7/32 (.218) DIA. 2 " "
 C - 2 1/32 (.656) DIA. 1 " "

REQ.	ITEM	PART NO.	DESCRIPTION	SYMBOL
		1/4 THK.	THE TECHNICAL MATERIEL CORP.	
		STOCK SIZE	MAMARONECK. NEW YORK	
	TEFLON	— # —	SPACER PLATE	
	MATERIAL	WEIGHT PER PC.	LOAD SWITCH	TAC-1
			CDD. 7-30-54	
		TYPE & TEMPER	DRAWN	ELEC. DES. APP. MECH. DES. APP.
			HEAT TREAT. SPEC.	
			FINISH & SPEC. NO.	
			CHECKED	FINAL APPROVAL
			PX-237	A

A	1	2 1/32 WAS 5/8	8/4/54	1	CDD	AWB	WJC
ISSUE	ITEM	CHANGED FROM	DATE	CN. NO.	DRAFTS	CHECKER	ENG. APP.

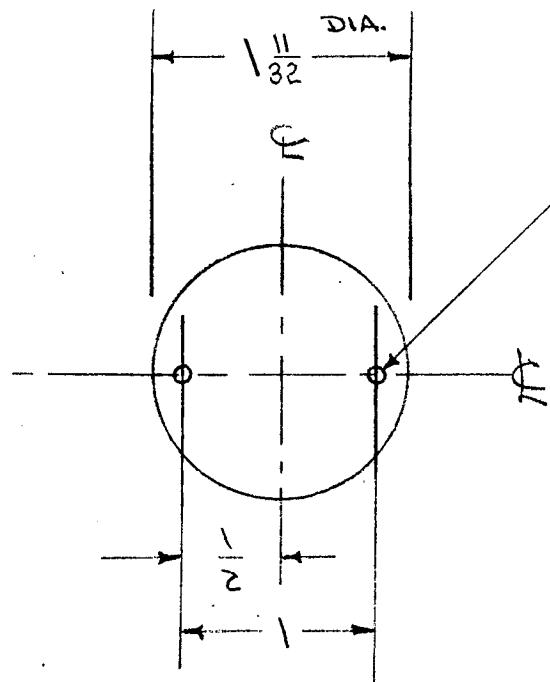
TOLERANCES		SCALE
ALL OTHERS	DEC. DIM. ± FRAC. DIM. ± 1/64 ANGULAR DIM. ± 2°	DRILL, PUNCH, COMMERCIAL STOCK SIZES AND MANUFACTURERS TOLERANCES ARE NOT INCLUDED.

IF IT IS FOUND DESIRABLE TO CHANGE ANY TOLERANCE OR OTHER DETAIL SPECIFIED ON THIS DRAWING NOTIFY THE PURCHASER PROMPTLY.

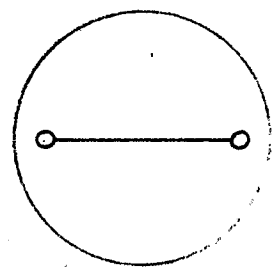
PX-240 B

MAXIMUM ALLOWABLE TOLERANCES HAVE BEEN DETERMINED AND DEVIATIONS WILL BE CAUSE FOR REJECTION. REMOVE ALL BURRS AND SHARP EDGES

REQ. PER UNIT	USED ON			
	MODEL	PROJECT NO.	ASS'Y. NO.	DATE
1	PMO-1	285		9-15-54
1	PMO-2	285		9-15-54
1	VOX-1, 2	291		1-12-55
1	RTF			2-1-56
1	RTF-2	F/P		11/4/58



NO. 50 (.070) 2 HOLES REQ.



SCRIBE LINE - RED FILLED AS ABOVE (.005 WIDE).

CUT & DRILL AS ABOVE

(See PX-377 for Plain Lens)

ISSUE	ITEM	CHANGED FROM	DATE	CN. NO.	DRAFTS	CHECKER	ENG. APP.
B	1	Stock Size Tol. Added	12/8/58	2	JAD		
A	1	1 11/32 WAS 15/16	10-15-54	1	P.B.		

TOLERANCES

SCALE

ALL OTHERS

DEC. DIM. \pm
 FRAC. DIM. $\pm \frac{1}{64}$
 ANGULAR DIM. \pm

DRILL, PUNCH, COMMERCIAL STOCK SIZES AND MANUFACTURERS TOLERANCES ARE NOT INCLUDED.

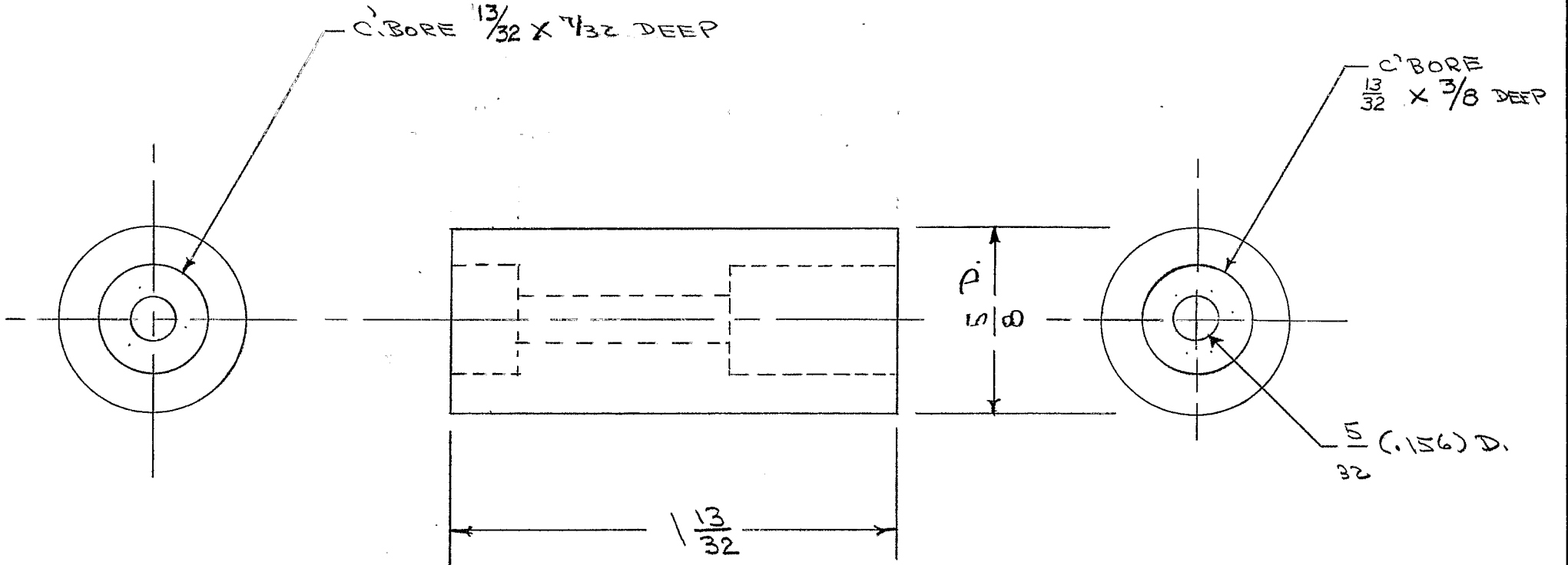
REQ.	ITEM	PART NO.	DESCRIPTION	SYMBOL
		.040 \pm .015	THE TECHNICAL MATERIEL CORP.	
		STOCK SIZE	MAMARONECK, NEW YORK	
		PLEXIGLAS	DIAL LENS	
		MATERIAL	(FRONT PANEL)	
		WEIGHT PER PC.	C.O.D. 9/15/54	
		TYPE & TEMPER	DRAWN	ELEC. DES. APP.
			CHECKED	MECH. DES. APP.
		HEAT TREAT. SPEC.	FINAL APPROVAL	
		FINISH & SPEC. NO.	PX-240 B	

IF IT IS FOUND DESIRABLE TO CHANGE ANY TOLERANCE OR OTHER DETAIL SPECIFIED ON THIS DRAWING NOTIFY THE PURCHASER PROMPTLY.

PX-241 D

MAXIMUM ALLOWABLE TOLERANCES HAVE BEEN DETERMINED AND DEVIATIONS WILL BE CAUSE FOR REJECTION. REMOVE ALL BURRS AND SHARP EDGES

REQ. PER UNIT	USED ON			
	MODEL	PROJECT NO.	ASS'Y. NO.	DATE
1	PMO-1	285		9-20-54
1	PMO-2	285		9-20-54



REF: FRANKLIN FIBER CO. TYPE P.B.E.

ISSUE	ITEM	CHANGED FROM	DATE	CN. NO.	DRAFTS	CHECKER	ENG. APP.
D	2	C'BORE 13/32 WAS 3/8	7/17/57	4	SC.	FAIR	ALL
C	5	C'BORE - 3/8 DEEP WAS 1/2	2-11-57	3	SC.	FAIR	ALL
B	4	MAT. WAS FIBER	11-17-54	2	P.B.	FAIR	ALL
A	3	1/2 WAS 9/16	10/29/54	1	FAIR	P.B.	ALL
	2	15/32 WAS 9/16					
	1	13/32 WAS 1/2					

REQ.	ITEM	PART NO.	DESCRIPTION	SYMBOL
		5/8 ROD	THE TECHNICAL MATERIEL CORP.	
		STOCK SIZE	MAMARONECK, NEW YORK	
		PHENOLIC	CLAMP, RELAY	
		MATERIAL	P.M.O.	
		WEIGHT PER PC.		
		LINEN BASE		
		TYPE & TEMPER	c.d.d. 9/20/54	
		HEAT TREAT. SPEC.	DRAWN	ELEC. DES. APP. MECH. DES. APP.
		FINISH & SPEC. NO.	FAIR	WOL
			CHECKED	FINAL APPROVAL
				PX-241 D

TOLERANCES

SCALE

ALL OTHERS
DEC. DIM. ±
FRAC. DIM. ± 1/64
ANGULAR DIM. ±

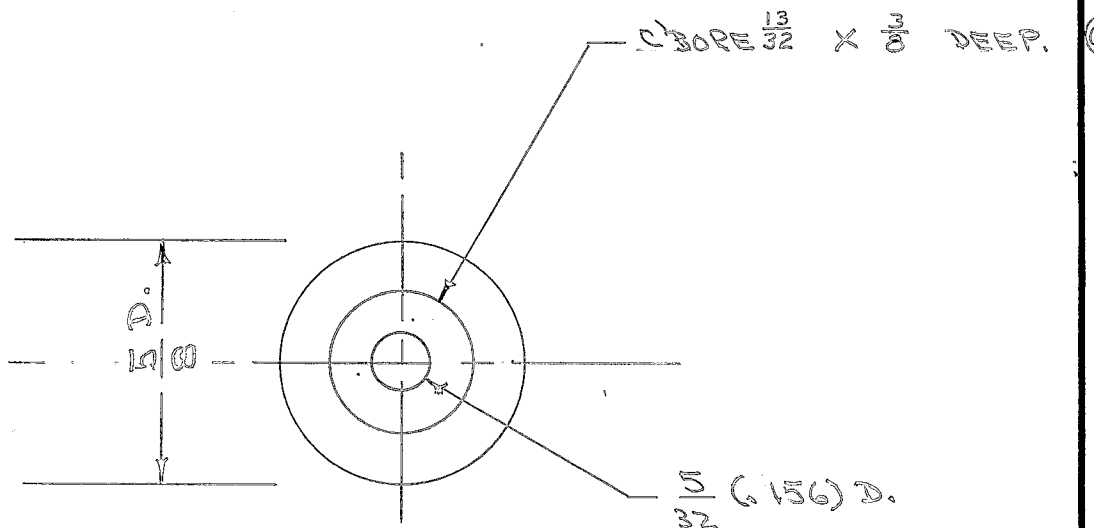
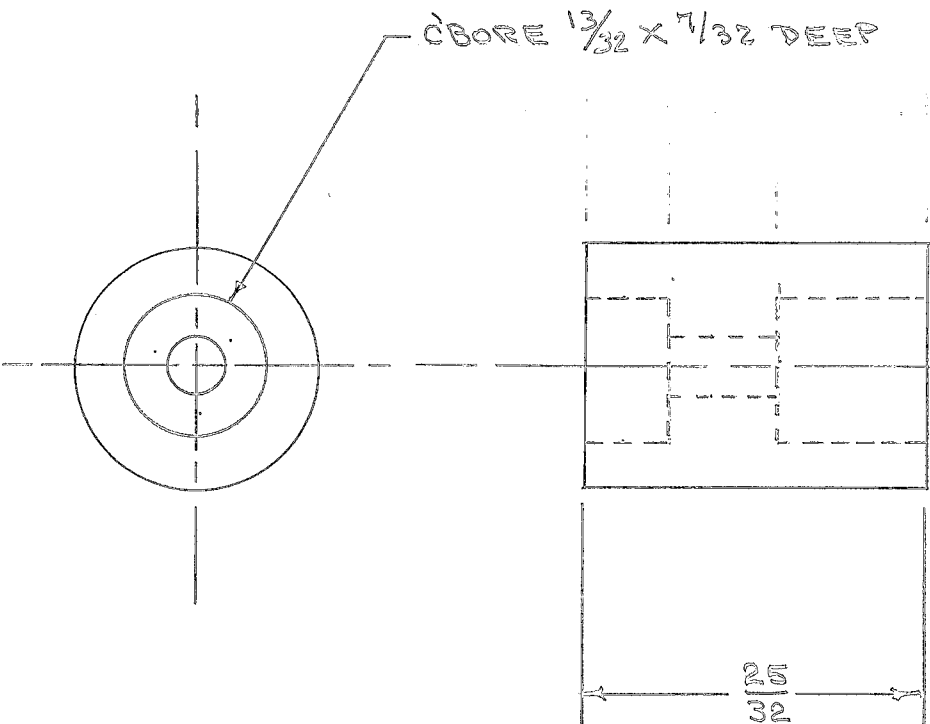
DRILL, PUNCH, COMMERCIAL STOCK
SIZES AND MANUFACTURERS
TOLERANCES ARE NOT INCLUDED.

IF IT IS FOUND DESIRABLE TO CHANGE ANY TOLERANCE OR OTHER DETAIL SPECIFIED ON THIS DRAWING NOTIFY THE PURCHASER PROMPTLY.

PX-242 D

MAXIMUM ALLOWABLE TOLERANCES HAVE BEEN DETERMINED AND DEVIATIONS WILL BE CAUSE FOR REJECTION. REMOVE ALL BURRS AND SHARP EDGES

REQ PER UNIT	USED ON			
	MODEL	PROJECT NO.	ASS'Y. NO.	DATE
1	PNO-1	285		9-20-54
1	PNO-2	285		9-20-54



REF: FRANKLIN FIBER CO. TYPE PBE

D	6	C'BORE 13/32 WAS 3/8	7/17/57	4	SL.	JACK	WRE
C	5	13/32 WAS 3/8	2-11-57	3	SL.	TO	WRE
B	4	MAT. WAS FIBER	11-17-57	2	P.B.	JACK	WRE
A	3	3/8 WAS 7/16	10/29/54	1	P.B.	WRE	WRE
	2	11/32 WAS 7/16					
	1	25/32 WAS 7/8					

REQ.	ITEM	PART NO.	DESCRIPTION	SYMBOL
		5/8 D. ROD.	THE TECHNICAL MATERIEL CORP. MAMARONECK, NEW YORK	CLAMP, CONDENSER P.M.O.
		STOCK SIZE		
		PHENOLIC	C10 D. 9-20-54	WRE
		MATERIAL WEIGHT PER PC.		
		LINEN BASE	DRAWN	ELEC. DES. APP.
		TYPE & TEMPER		
		HEAT TREAT. SPEC.	CHECKED	FINAL APPROVAL
		FINISH & SPEC. NO.		

ISSUE	ITEM	CHANGED FROM	DATE	CN. NO.	DRAFTS	CHECKER	ENG. APP.

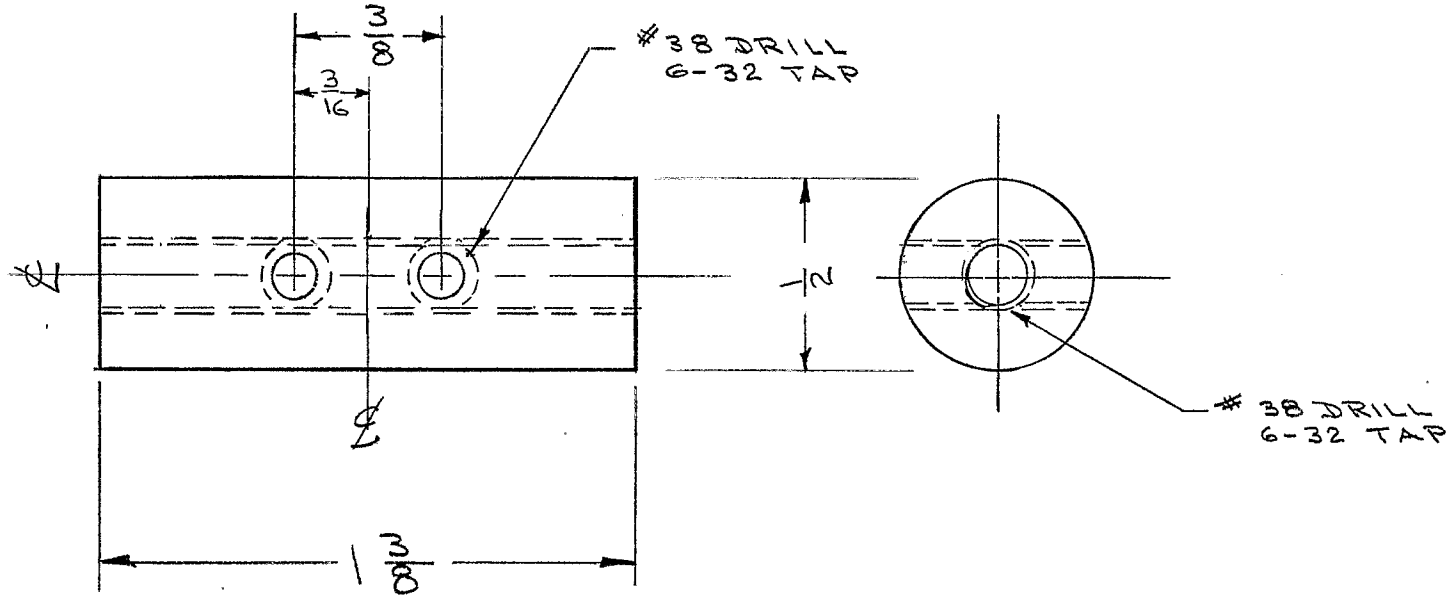
TOLERANCES		SCALE
ALL OTHERS	DEC. DIM. ± FRAC. DIM. ± 1/64 ANGULAR DIM. ±	DRILL, PUNCH, COMMERCIAL STOCK SIZES AND MANUFACTURERS TOLERANCES ARE NOT INCLUDED.

IF IT IS FOUND DESIRABLE TO CHANGE ANY TOLERANCE OR OTHER DETAIL SPECIFIED ON THIS DRAWING NOTIFY THE PURCHASER PROMPTLY.

PX-246

MAXIMUM ALLOWABLE TOLERANCES HAVE BEEN DETERMINED AND DEVIATIONS WILL BE CAUSE FOR REJECTION. REMOVE ALL BURRS AND SHARP EDGES

REQ PER UNIT	USED ON			
	MODEL	PROJECT NO.	ASSY. NO.	DATE
1	DAC-3		A-883	11/10/54



REQ.	ITEM	PART NO.	DESCRIPTION	SYMBOL
		1/2 DIA.	THE TECHNICAL MATERIEL CORP. MAMARONECK. NEW YORK	
		STOCK SIZE		
		PHENOLIC	HOLDER, SPARK ROD	
		MATERIAL WEIGHT PER PC.	MODEL DAC-3	
		LINEN BASE		
		TYPE & TEMPER		
			JAD 11/10/54	
			DRAWN	ELEC. DES. APP. MECH. DES. APP.
			CSO 11/11/54	
		HEAT TREAT. SPEC.	CHECKED	FINAL APPROVAL
		NATURAL		PX-246
		FINISH & SPEC. NO.		

ISSUE	ITEM	CHANGED FROM	DATE	CN. NO.	DRAFTS	CHECKER	ENG. APP.

TOLERANCES

SCALE

ALL OTHERS
DEC. DIM. ±
FRAC. DIM. ±
ANGULAR DIM. ±

DRILL, PUNCH, COMMERCIAL STOCK
SIZES AND MANUFACTURERS
TOLERANCES ARE NOT INCLUDED.

IF IT IS FOUND DESIRABLE TO CHANGE ANY TOLERANCE OR OTHER DETAIL SPECIFIED ON THIS DRAWING NOTIFY THE PURCHASER PROMPTLY.

PX-247

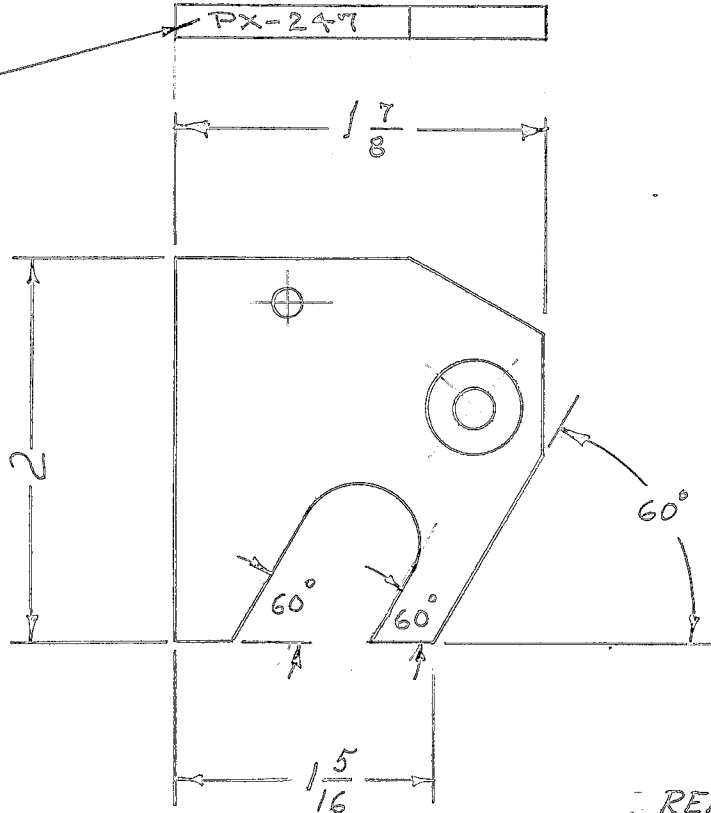
MAXIMUM ALLOWABLE TOLERANCES HAVE BEEN DETERMINED AND DEVIATIONS WILL BE CAUSE FOR REJECTION. REMOVE ALL BURRS AND SHARP EDGES

REQ. PER. UNIT.

USED ON

REQ. PER. UNIT.	MODEL	PROJECT NO.	ASS'Y. NO.	DATE
1	TAC-1	132	ED-134	11-11-54

STAMP AS SHOWN



REF: USE PX-236

REQ.	ITEM	PART NO.	DESCRIPTION	SYMBOL
		1/4 THK.	THE TECHNICAL MATERIEL CORP.	
		STOCK SIZE	MAMARONECK. NEW YORK	
	TEFLON	-4-	MODIFIED SPACER PLATE	
	MATERIAL	WEIGHT PER PC.	ROTOR SWITCH TAC-1	
		TYPE & TEMPER	P.B. 11-11-54	and
			DRAWN	ELEC. DES. APP. MECH. DES. APP.
		HEAT TREAT. SPEC.	and	
		FINISH & SPEC. NO.	CHECKED	FINAL APPROVAL
				PX-247

ISSUE ITEM CHANGED FROM DATE CN. NO. DRAFTS CHECKER ENG. APP.

TOLERANCES

SCALE

ALL OTHERS

DEC. DIM. ±
FRAC. DIM. ± 1/64
ANGULAR DIM. ±

DRILL, PUNCH, COMMERCIAL STOCK SIZES AND MANUFACTURERS TOLERANCES ARE NOT INCLUDED.

IF IT IS FOUND DESIRABLE TO CHANGE ANY TOLERANCE OR OTHER DETAIL SPECIFIED ON THIS DRAWING NOTIFY THE PURCHASER PROMPTLY.

PX-248

MAXIMUM ALLOWABLE TOLERANCES HAVE BEEN DETERMINED AND DEVIATIONS WILL BE CAUSE FOR REJECTION. REMOVE ALL BURRS AND SHARP EDGES

REQ
PER
UNIT.

USED ON

MODEL

PROJECT NO.

ASS'Y. NO.

DATE

1

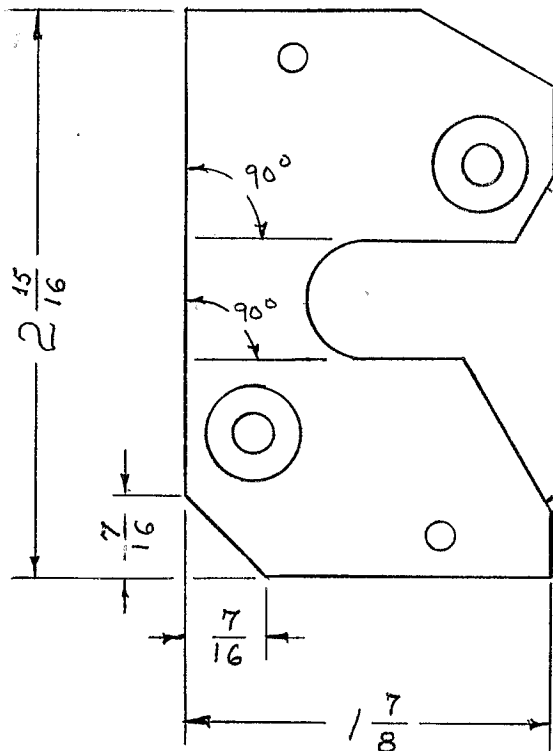
TAC-1

132

ID-135

11-11-54

PX-248



STAMP AS SHOWN

REF: USE PX-237

REQ.	ITEM	PART NO.	DESCRIPTION	SYMBOL
		1/4 THK.	THE TECHNICAL MATERIEL CORP.	
		STOCK SIZE	MAMARONECK. NEW YORK	
		TEFLON	MODIFIED SPACER PLATE	
		MATERIAL	LOAD SWITCH	
		WEIGHT PER PC.		
		TYPE & TEMPER	P.B. 11-11-54	
		HEAT TREAT. SPEC.	DRAWN	
		FINISH & SPEC. NO.	ELEC. DES. APP.	
			MECH. DES. APP.	
			CHECKED	
			FINAL APPROVAL	
			PX-248	

ISSUE ITEM CHANGED FROM DATE CN. NO. DRAFTS CHECKER ENG. APP.

TOLERANCES

SCALE

ALL OTHERS

DEC. DIM. ±
FRAC. DIM. ± 1/64
ANGULAR DIM. ±

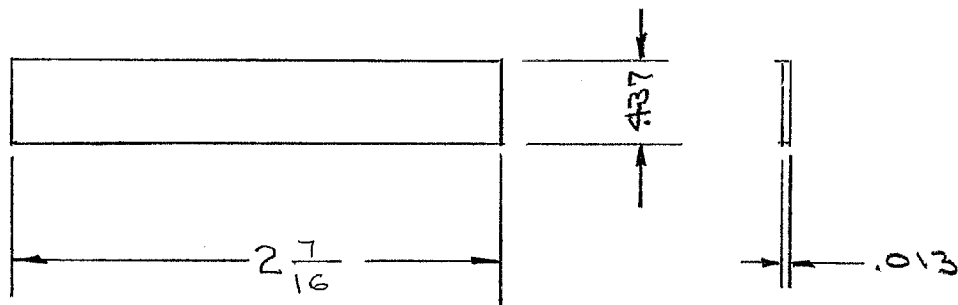
DRILL, PUNCH, COMMERCIAL STOCK
SIZES AND MANUFACTURERS
TOLERANCES ARE NOT INCLUDED.

IF IT IS FOUND DESIRABLE TO CHANGE ANY TOLERANCE OR OTHER DETAIL SPECIFIED ON THIS DRAWING NOTIFY THE PURCHASER PROMPTLY.

PX-249 A

MAXIMUM ALLOWABLE TOLERANCES HAVE BEEN DETERMINED AND DEVIATIONS WILL BE CAUSE FOR REJECTION. REMOVE ALL BURRS AND SHARP EDGES

REQ PER UNIT	USED ON			
	MODEL	PROJECT NO.	ASS'Y. NO.	DATE
1	RSC-2			12-20-54
4	QDP			3-3-57



REQ.	ITEM	PART NO.	DESCRIPTION	SYMBOL
		.013	THE TECHNICAL MATERIEL CORP. MAMARONECK, NEW YORK	
		STOCK SIZE		
		VINYL PLASTIC	GUARD, FREQ. TAB	
		MATERIAL	MODEL RSC-2	
		WEIGHT PER PC.		
		TYPE & TEMPER	JAK	
			DRAWN	ELEC. DES. APP. MECH. DES. APP.
		HEAT TREAT. SPEC.	WSS	WSS
		FINISH & SPEC. NO.	CHECKED	FINAL APPROVAL

ISSUE	ITEM	CHANGED FROM	DATE	CN. NO.	DRAFTS	CHECKER	ENG. APP.
A	1	2 7/16 WAS 2 1/2	12-30-54	1	AB	WSS	WSS

TOLERANCES	SCALE
ALL OTHERS DEC. DIM. $\pm .005$ FRAC. DIM. $\pm 1/64$ ANGULAR DIM. \pm	DRILL, PUNCH, COMMERCIAL STOCK SIZES AND MANUFACTURERS TOLERANCES ARE NOT INCLUDED.

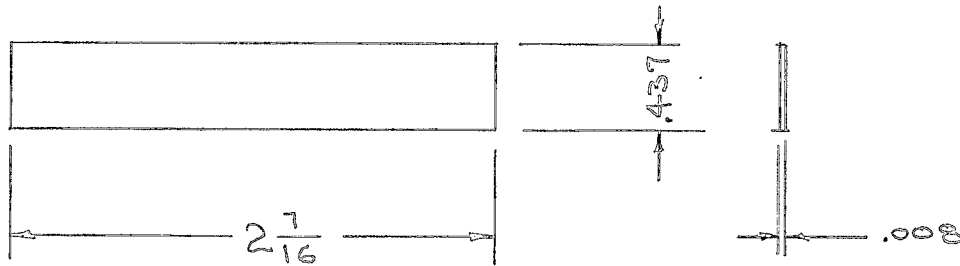
PX-249 A

IF IT IS FOUND DESIRABLE TO CHANGE ANY TOLERANCE OR OTHER DETAIL SPECIFIED ON THIS DRAWING NOTIFY THE PURCHASER PROMPTLY.

PX-250 A

MAXIMUM ALLOWABLE TOLERANCES HAVE BEEN DETERMINED AND DEVIATIONS WILL BE CAUSE FOR REJECTION. REMOVE ALL BURRS AND SHARP EDGES

REQ PER UNIT	USED ON			
	MODEL	PROJECT NO.	ASS'Y. NO.	DATE
1	RSC-2			12-20-54
4	@DP			8-3-57



REF: OXFORD, INDEX CARD (3" x 5")

REQ.	ITEM	PART NO.	DESCRIPTION	SYMBOL
			THE TECHNICAL MATERIEL CORP. MAMARONECK. NEW YORK	
		STOCK SIZE	FREQ. TAB	
	PAPER WHITE		MODEL RSC-2	
	MATERIAL	WEIGHT PER PC.		
		TYPE & TEMPER		
		HEAT TREAT, SPEC.		
		FINISH & SPEC. NO.		

ISSUE	ITEM	CHANGED FROM	DATE	CN. NO.	DRAFTS	CHECKER	ENG. APP.
A	1	2 7/16 WAS 2 1/2	12-30-54	1	P.D.	COO	WRE

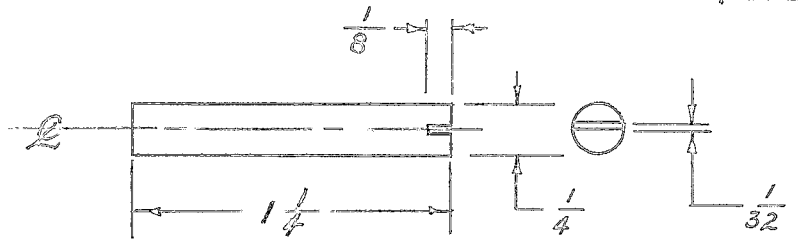
TOLERANCES		SCALE
ALL OTHERS	DEC. DIM. $\pm .005$ FRAC. DIM. $\pm 1/64$ ANGULAR DIM. \pm	DRILL, PUNCH, COMMERCIAL STOCK SIZES AND MANUFACTURERS TOLERANCES ARE NOT INCLUDED.

IF IT IS FOUND DESIRABLE TO CHANGE ANY TOLERANCE OR OTHER DETAIL SPECIFIED ON THIS DRAWING NOTIFY THE PURCHASER PROMPTLY.

PX-259 B

MAXIMUM ALLOWABLE TOLERANCES HAVE BEEN DETERMINED AND DEVIATIONS WILL BE CAUSE FOR REJECTION. REMOVE ALL BURRS AND SHARP EDGES

REQ. PER UNIT	USED ON			
	MODEL	PROJECT NO.	ASS'Y. NO.	DATE
1	VOX			2-8-55
1	VOX 1-2			2-8-55
1	PMO-1			2-1-56
1	PMO-2			2-1-56
1	RTF			2-1-56
1	RTF-2			11-10-58
1	AO-100		A-1742	



REQ.	ITEM	PART NO.	DESCRIPTION	SYMBOL
		1/4 D.	THE TECHNICAL MATERIEL CORP. MAMARONECK. NEW YORK	
		STOCK SIZE		
	EPOXY		SHAFT, OSC. COND. EXTENSION	
			(OSC. ASSY.)	
	G-11		PP. 2-8-55	
			DRAWN	ELEC. DES. APP.
			CHECKED	FINAL APPROVAL
				PX-259 B

ISSUE	ITEM	CHANGED FROM	DATE	CN. NO.	DRAFTS	CHECKER	ENG. APP.
B	1	EPOXY G-11 WAS BLACK PHENOLIC	2-11-60	2784	RU		
A	1	1 5/8 CHANGED TO 1 1/4	10/24/56	1	C.S.		

TOLERANCES		SCALE
ALL OTHERS	DEC. DIM. ± FRAC. DIM. ± 1/64 ANGULAR DIM. ±	DRILL, PUNCH, COMMERCIAL STOCK SIZES AND MANUFACTURERS TOLERANCES ARE NOT INCLUDED.

IF IT IS FOUND DESIRABLE TO CHANGE ANY TOLERANCE OR OTHER DETAIL SPECIFIED ON THIS DRAWING NOTIFY THE PURCHASER PROMPTLY.

PX-261

MAXIMUM ALLOWABLE TOLERANCES HAVE BEEN DETERMINED AND DEVIATIONS WILL BE CAUSE FOR REJECTION. REMOVE ALL BURRS AND SHARP EDGES

REQ. PER UNIT

USED ON

MODEL

PROJECT NO.

ASS'Y. NO.

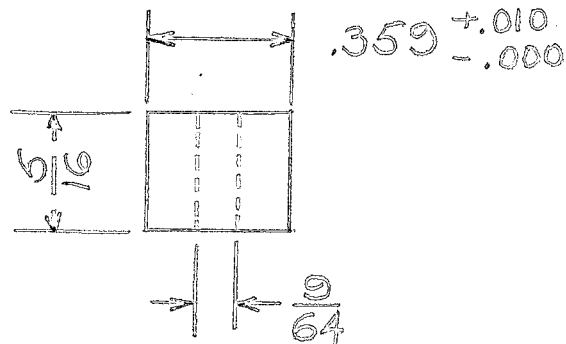
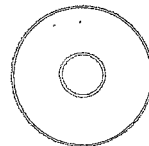
DATE

18

GPR

297

2-25-55



REQ.	ITEM	PART NO.	DESCRIPTION	SYMBOL
			THE TECHNICAL MATERIEL CORP.	
			MAMARONECK. NEW YORK	
			POLYETHYLENE	COIL FORM PLUG
			MATERIAL	WEIGHT PER PC.
			Approx 90 Diameter	
			TYPE & TEMPER	
				PLK. 2-25-55
			DRAWN	A.H.
				W.D.
			HEAT TREAT. SPEC.	
			CHECKED	G.T.O.
				FINAL APPROVAL
				PX-261
			FINISH & SPEC. NO.	

ISSUE	ITEM	CHANGED FROM	DATE	CN. NO.	DRAFTS	CHECKER	ENG. APP.

TOLERANCES

SCALE

ALL OTHERS

DEC. DIM. $\pm .010$
 FRAC. DIM. $\pm .000$
 ANGULAR DIM. $\pm 1/64$

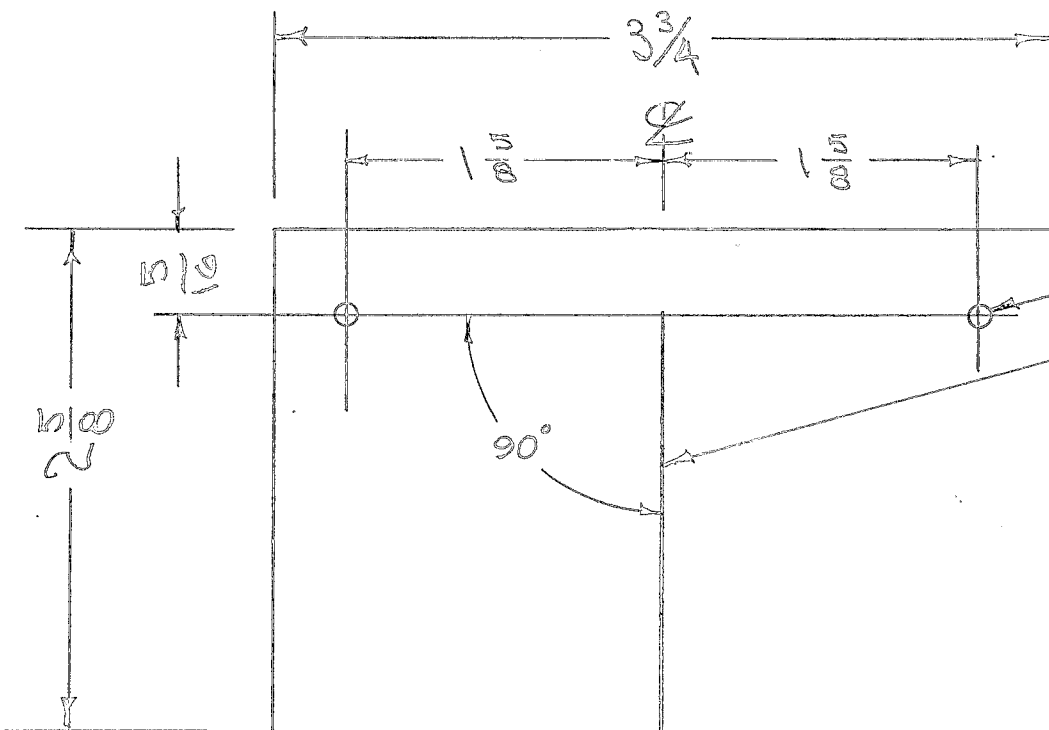
DRILL, PUNCH, COMMERCIAL STOCK SIZES AND MANUFACTURERS TOLERANCES ARE NOT INCLUDED.

IF IT IS FOUND DESIRABLE TO CHANGE ANY TOLERANCE OR OTHER DETAIL SPECIFIED ON THIS DRAWING NOTIFY THE PURCHASER PROMPTLY.

PX-264 D

MAXIMUM ALLOWABLE TOLERANCES HAVE BEEN DETERMINED AND DEVIATIONS WILL BE CAUSE FOR REJECTION. REMOVE ALL BURRS AND SHARP EDGES

REQ. PER UNIT	USED ON			
	MODEL	PROJECT NO.	ASS'Y. NO.	DATE
2	GPR	297		3-7-55
1	SBE-1-2			7-24-57
1	SBE-3	AP-101		11-30-58



3/16 (.187) D. 2 REQ.
SCRIBE LINE RED FILLED

REQ.	ITEM	PART NO.	DESCRIPTION	SYMBOL
		.040 ± .015	THE TECHNICAL MATERIEL CORP.	
		STOCK SIZE	MAMARONECK, NEW YORK	
		PLEXIGLASS. —H—	DIAL FIDUCIARY	
		MATERIAL	G.P.R.	
		WEIGHT PER PC.		
		TYPE & TEMPER	CD. 87-95	###
		DRAWN	ELEC. DES. APP.	MECH. DES. APP.
		HEAT TREAT. SPEC.	G.T.O	
		FINISH & SPEC. NO.	CHECKED	FINAL APPROVAL

ISSUE	ITEM	CHANGED FROM	DATE	CN. NO.	DRAFTS	CHECKER	ENG. APP.
D	1	Stock Size Tol. Added	1/28/52	4	J.M.C.		
C	1	3/16 WAS 5/64	6/5/56	3	J.M.C.		
B	1	HOLES WERE #32 DRILL	8/2/55	2	J.M.C.		
A	1	90° ANGLE ADDED					
		5/16 WAS 7/16	6/1/51	1	J.M.C.		

TOLERANCES		SCALE
ALL OTHERS	DEC. DIM. ± FRAC. DIM. ± 1/64 ANGULAR DIM. ± 1/2°	DRILL, PUNCH, COMMERCIAL STOCK SIZES AND MANUFACTURERS TOLERANCES ARE NOT INCLUDED.

PX-264 D

IF IT IS FOUND DESIRABLE TO CHANGE ANY TOLERANCE OR OTHER DETAIL SPECIFIED ON THIS DRAWING NOTIFY THE PURCHASER PROMPTLY.

PX-266 A

MAXIMUM ALLOWABLE TOLERANCES HAVE BEEN DETERMINED AND DEVIATIONS WILL BE CAUSE FOR REJECTION. REMOVE ALL BURRS AND SHARP EDGES

REQ. PER UNIT

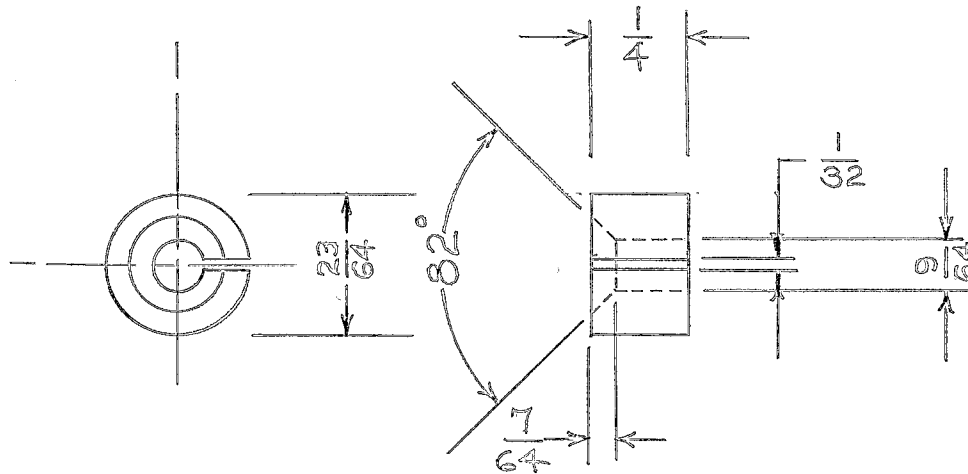
USED ON

MODEL

PROJECT NO.

ASS'Y. NO.

DATE



REF: CF-112 COIL FORM

REF: FRANKLIN FIBER CO.

REQ.	ITEM	PART NO.	DESCRIPTION	SYMBOL
	23/64	ROD	THE TECHNICAL MATERIEL CORP.	
	STOCK SIZE		MAMARONECK. NEW YORK	
	FIBER		BUSHING, COIL	
	MATERIAL	WEIGHT PER PC.		
	TYPE & TEMPER		P.L.K.3-23-55	###
	HEAT TREAT. SPEC.		MECH. DES. APP.	L.D.C.
	FINISH & SPEC. NO.		G.T.O.	
			CHECKED	FINAL APPROVAL
				PX-266 A

A	1	7/64 WAS 1/16	10/16/55	1	LG	CCD	WDC
ISSUE	ITEM	CHANGED FROM	DATE	CN. NO.	DRAFTS	CHECKER	ENG. APP.

TOLERANCES

SCALE

ALL OTHERS
DEC. DIM. ±
FRAC. DIM. ± 1/64
ANGULAR DIM. ±

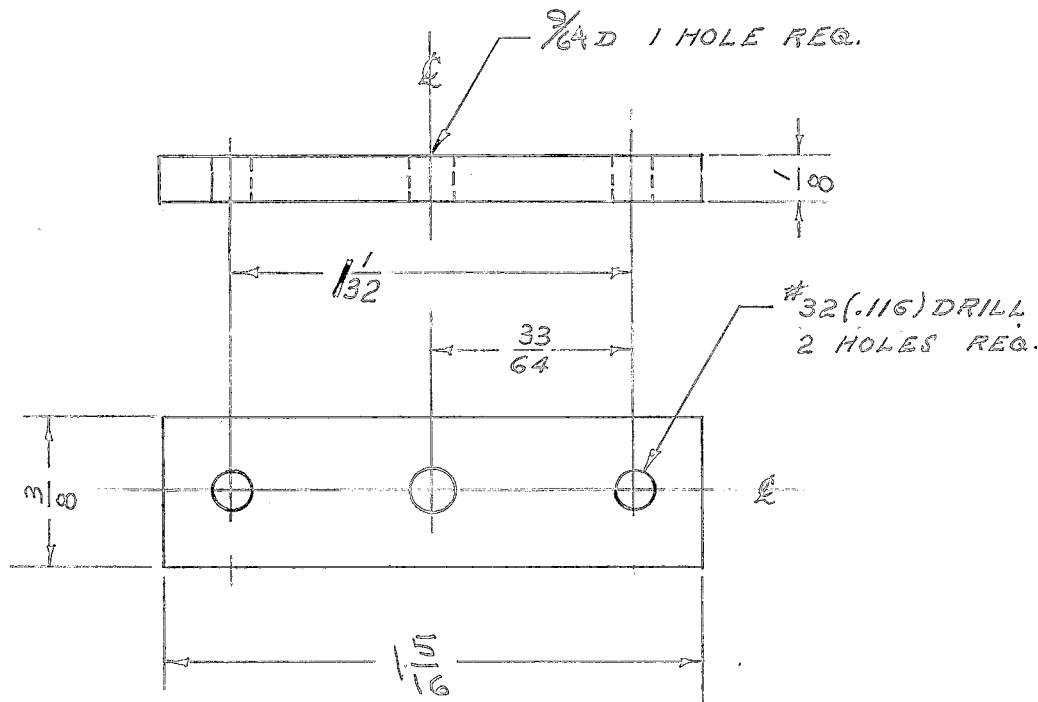
DRILL, PUNCH, COMMERCIAL STOCK SIZES AND MANUFACTURERS TOLERANCES ARE NOT INCLUDED.

IF IT IS FOUND DESIRABLE TO CHANGE ANY TOLERANCE OR OTHER DETAIL SPECIFIED ON THIS DRAWING NOTIFY THE PURCHASER PROMPTLY.

PX-270 B

MAXIMUM ALLOWABLE TOLERANCES HAVE BEEN DETERMINED AND DEVIATIONS WILL BE CAUSE FOR REJECTION. REMOVE ALL BURRS AND SHARP EDGES

REQ. PER UNIT	USED ON			
	MODEL	PROJECT NO.	ASS'Y. NO.	DATE
1	GPR			3-30-55



REQ.	ITEM	PART NO.	DESCRIPTION	SYMBOL
		1/8 X 3/8	THE TECHNICAL MATERIEL CORP.	
		STOCK SIZE	MAMARONECK. NEW YORK	
		BAKELITE	MOUNTING BOARD	
		MATERIAL	AUDIO SELECTIVITY TOROID	
		WEIGHT PER PC.		
		XXXP	A.B. 30-55	
		TYPE & TEMPER	###	
			DRAWN	MECH. DES. APP.
			HEAT TREAT. SPEC.	
		NATURAL	CHECKED	FINAL APPROVAL
		FINISH & SPEC. NO.		

ISSUE	ITEM	CHANGED FROM	DATE	CN. NO.	DRAFTS	CHECKER	ENG. APP.
B	1	15/16 WAS 13/8	5/1/55	2	ESS	###	W.C.
A	1	3/64 WAS 1/8	5/1/55	1	ESS	###	W.C.

TOLERANCES		SCALE
ALL OTHERS	DEC. DIM. ± FRAC. DIM. ± 1/64 ANGULAR DIM. ±	DRILL, PUNCH, COMMERCIAL STOCK SIZES AND MANUFACTURERS TOLERANCES ARE NOT INCLUDED.

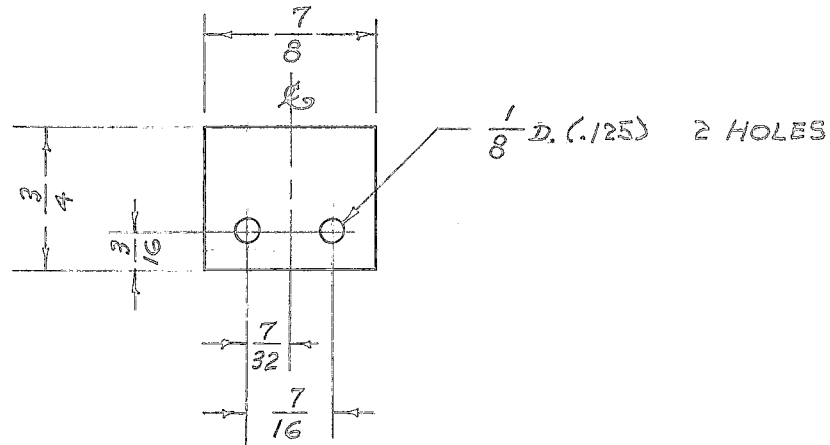
PX-270 B

IF IT IS FOUND DESIRABLE TO CHANGE ANY TOLERANCE OR OTHER DETAIL SPECIFIED ON THIS DRAWING NOTIFY THE PURCHASER PROMPTLY.

PX-283

MAXIMUM ALLOWABLE TOLERANCES HAVE BEEN DETERMINED AND DEVIATIONS WILL BE CAUSE FOR REJECTION. REMOVE ALL BURRS AND SHARP EDGES

REQ. PER UNIT	USED ON			
	MODEL	PROJECT NO.	ASS'Y. NO.	DATE
1	FSS			6-16-55



REQ.	ITEM	PART NO.	DESCRIPTION
	1/16 THK		THE TECHNICAL MATERIEL CO
	STOCK SIZE		MAMARONECK. NEW YORK
	PHENOLIC	— 4 —	TRIMMER INSULATOR
	MATERIAL	WEIGHT PER PC.	
	XXXX LAMINATE		
	TYPE & TEMPER		PB 6-16-55 <i>JB</i>
			DRAWN ELEC. DES. AP
			<i>CRD 7-8-55</i> <i>KZ</i>
	HEAT TREAT. SPEC.		CHECKED
	NATURAL		
	FINISH & SPEC. NO.		

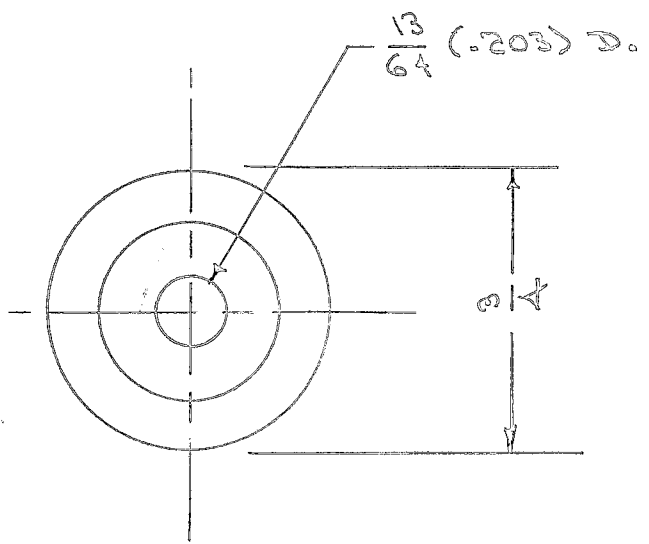
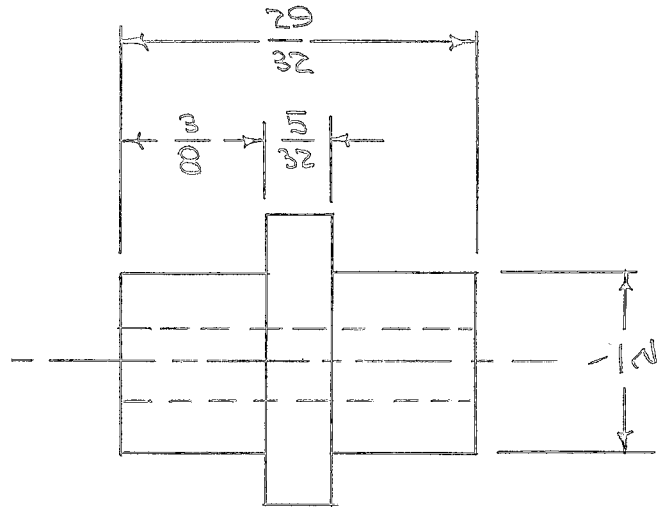
ISSUE	ITEM	CHANGED FROM	DATE	CN. NO.	DRAFTS	CHECKER	ENG. APP.
TOLERANCES		SCALE					
ALL OTHERS	DEC. DIM. ±	DRILL, PUNCH, COMMERCIAL STOCK SIZES AND MANUFACTURERS TOLERANCES ARE NOT INCLUDED.					
	FRAC. DIM. ± 1/64						
	ANGULAR DIM. ±						

IF IT IS FOUND DESIRABLE TO CHANGE ANY TOLERANCE OR OTHER DETAIL SPECIFIED ON THIS DRAWING NOTIFY THE PURCHASER PROMPTLY.

PX-287

MAXIMUM ALLOWABLE TOLERANCES HAVE BEEN DETERMINED AND DEVIATIONS WILL BE CAUSE FOR REJECTION. REMOVE ALL BURRS AND SHARP EDGES

REQ. PER UNIT	USED ON			
	MODEL	PROJECT NO.	ASS'Y. NO.	DATE
2	TR-133			7-18-55
2	TR-149		TRC-3500	6-27-61



NOTICE TO PERSONS RECEIVING THIS DRAWING

THE TECHNICAL MATERIEL CORPORATION claims proprietary right in the material disclosed hereon. This drawing is issued in confidence for engineering information only and may not be reproduced or used to manufacture anything shown hereon without permission from THE TECHNICAL MATERIEL CORPORATION to the user. This drawing is loaned for mutual assistance and is subject to recall at any time.

Property of:

THE TECHNICAL MATERIEL CORPORATION
MAMARONECK, NEW YORK

REQ.	ITEM	PART NO.	DESCRIPTION	SYMBOL
			THE TECHNICAL MATERIEL CORP.	
STOCK SIZE			MAMARONECK. NEW YORK	
TEFLON			GLAND	
MATERIAL		WEIGHT PER PC.		
TYPE & TEMPER			CD. 7-18-55	DB
			DRAWN	ELEC. DES. APP.
			HEAT TREAT. SPEC.	MECH. DES. APP.
FINISH & SPEC. NO.			CHECKED	FINAL APPROVAL

ISSUE	ITEM	CHANGED FROM	DATE	CN. NO.	DRAFTS	CHECKER	ENG. APP.
TOLERANCES		SCALE					
ALL OTHERS	DEC. DIM. ±	DRILL, PUNCH, COMMERCIAL STOCK SIZES AND MANUFACTURERS TOLERANCES ARE NOT INCLUDED.					
	FRAC. DIM. ± 1/64						
	ANGULAR DIM. ±						

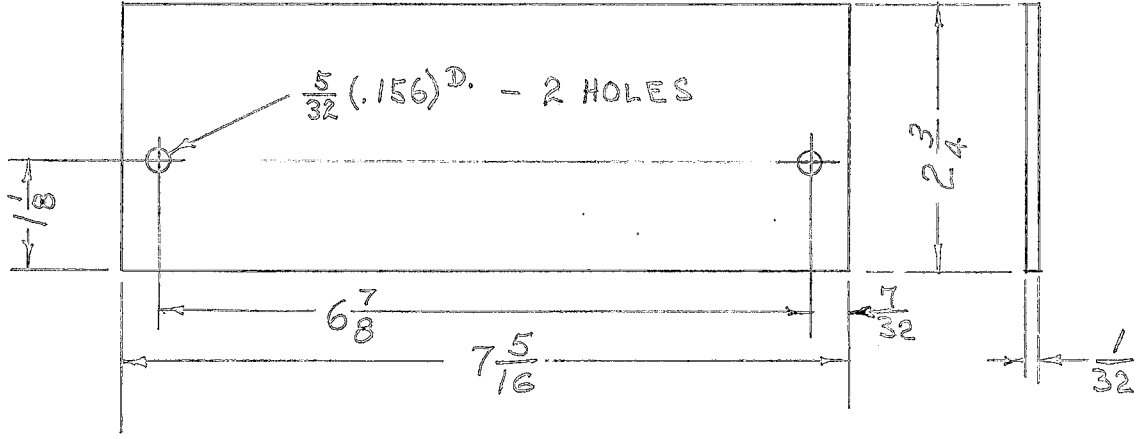
PX-287

IF IT IS FOUND DESIRABLE TO CHANGE ANY TOLERANCE OR OTHER DETAIL SPECIFIED ON THIS DRAWING NOTIFY THE PURCHASER PROMPTLY.

PX-289 B

MAXIMUM ALLOWABLE TOLERANCES HAVE BEEN DETERMINED AND DEVIATIONS WILL BE CAUSE FOR REJECTION. REMOVE ALL BURRS AND SHARP EDGES

REQ. PER UNIT	USED ON			
	MODEL	PROJECT NO.	ASS'Y. NO.	DATE
2	GPR	289		7-28-55



ISSUE	ITEM	CHANGED FROM	DATE	CN. NO.	DRAFTS	CHECKER	ENG. APP.
B	3	MATERIAL WAS PHENOLIC	6/14/56	2	JAR	CSB	WJ
	2	7 5/16 WAS 7 3/8					
	1	7/32 WAS 1/4					
A	2	WAS 1/16 THK	7/14/55	1	CSB	JAR	WJ
	1	WAS XXXP					

REQ.	ITEM	PART NO.	DESCRIPTION	SYMBOL
			THE TECHNICAL MATERIEL CORP.	
			MAMARONECK, NEW YORK	
			CONDENSER INSULATOR	
			GPR	
			GR-XXX	
			TYPE & TEMPER	
			DRAWN	
			ELEC. DES. APP.	
			CHECKED	
			HEAT TREAT. SPEC.	
			NATURAL	
			FINISH & SPEC. NO.	
			FINAL APPROVAL	
			PX-289	B

TOLERANCES		SCALE
ALL OTHERS	DEC. DIM. \pm FRAC. DIM. \pm Y64 ANGULAR DIM. \pm	DRILL, PUNCH, COMMERCIAL STOCK SIZES AND MANUFACTURERS TOLERANCES ARE NOT INCLUDED.

IF IT IS FOUND DESIRABLE TO CHANGE ANY TOLERANCE OR OTHER DETAIL SPECIFIED ON THIS DRAWING NOTIFY THE PURCHASER PROMPTLY.

PX-292

MAXIMUM ALLOWABLE TOLERANCES HAVE BEEN DETERMINED AND DEVIATIONS WILL BE CAUSE FOR REJECTION. REMOVE ALL BURRS AND SHARP EDGES

REQ. PER UNIT

USED ON

MODEL

PROJECT NO.

ASS'Y. NO.

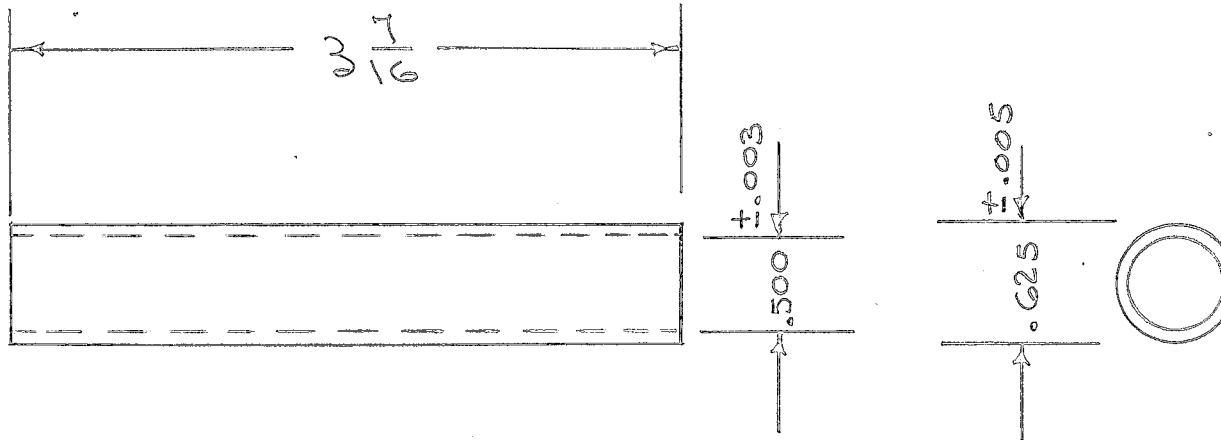
DATE

1

RR-115

A-1070

8/9/55



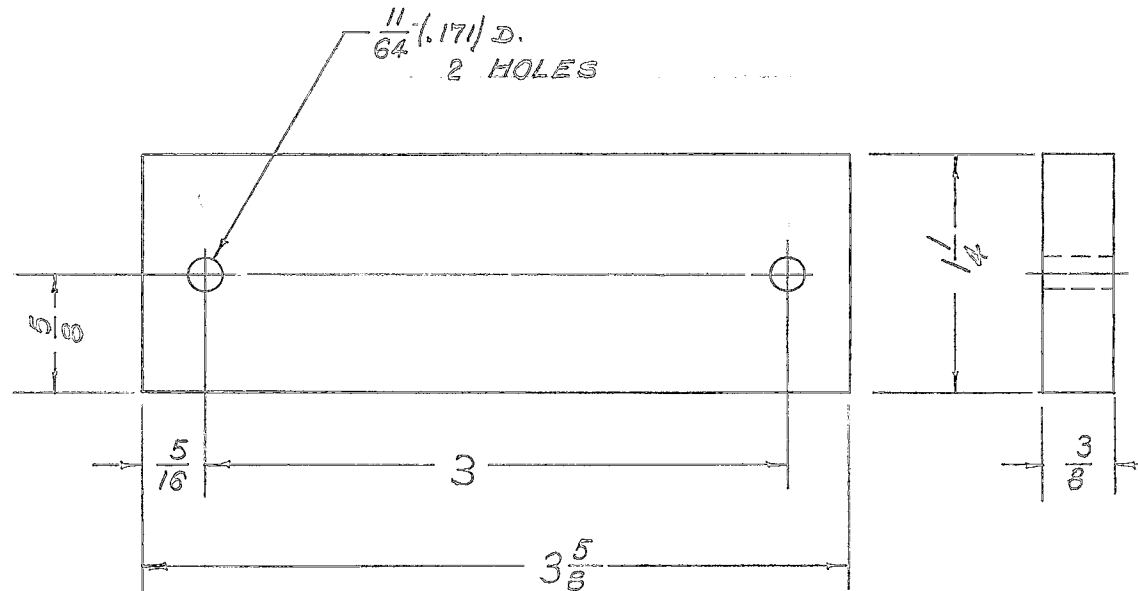
C	1	"OBSOLETE" NOTE DELETED	11.19.61	12964	LS	Am	MM
B	2	OBSOLETE NOTE ADDED	3-20-63	8594	LS	Am	MM
A	1	ID WAS 1/2", O.D. WAS 5/8" MATERIAL WAS BAKELITE	11/6/58	1	Am	LS	MM

REQ.	ITEM	PART NO.	DESCRIPTION	SYMBOL
		1/2 ID - 5/8 OD.	THE TECHNICAL MATERIEL CORP.	
		STOCK SIZE	MAMARONECK. NEW YORK	
		PHENOLIC	CASE, RESISTOR	
		MATERIAL	RTB	
		LE-COTTON BASE	CDD 8/8/55	
		WEIGHT PER PC.		
		TYPE & TEMPER		
			DRAWN	ELEC. DES. APP.
			MECH. DES. APP.	
			CHECKED	FINAL APPROVAL
		NATURAL		
		FINISH & SPEC. NO.	PX-292	C

TOLERANCES		SCALE
ALL OTHERS	DEC. DIM. ± FRAC. DIM. ± 1/64 ANGULAR DIM. ±	DRILL, PUNCH, COMMERCIAL STOCK SIZES AND MANUFACTURERS TOLERANCES ARE NOT INCLUDED.

REQ. PER UNIT	USED ON		
	MODEL	ASS'Y. NO.	DATE
1	RTM		10-10-55
1	RTM-2		10-16-58

PX-297 A



* FUNGUS PROOFING PER TMC SPECIFICATION S-113

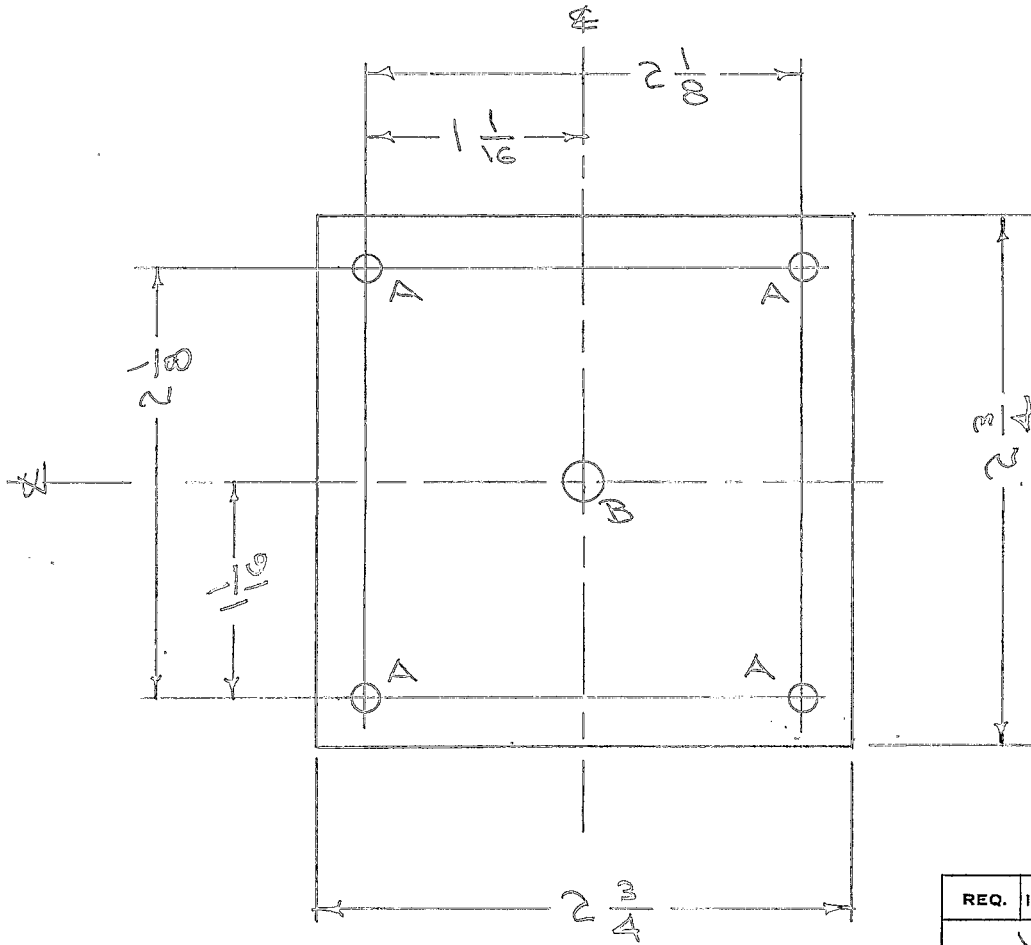
ISSUE	ITEM	CHANGED FROM	DATE	CH. NO.	DRAFTS	CHECKER	ENG. APP.	REQ. ITEM	PART NO.	DESCRIPTION	SYMBOL		
										THE TECHNICAL MATERIEL CORP. MAMARONECK, NEW YORK			
										RELAY, MOUNTING BOARD			
										GPT-750			
A		S113 ADDED	4/13/62	11186	A.M.	JWL	EG						
TOLERANCES			SCALE:					XXX: LAMINA	—#—	PB 10-10-55	JWL	A. J. J.	
DEC. DIM. ±			MAXIMUM ALLOWABLE TOLERANCES HAVE BEEN DETERMINED AND ANY DEVIATIONS WILL BE CAUSE FOR REJECTION. REMOVE ALL BURRS AND SHARP EDGES					TYPE & TEMPER		DRAWN		MECH. DES. APP.	
FRAC. DIM. ±								HEAT TREAT. SPEC.		CHECKED		FINAL APPROVAL	
ANGULAR DIM. ±								NATURAL *		WJC		PX-297 A	
								FINISH & SPEC. NO.		ELEC. DES. APP.			

IF IT IS FOUND DESIRABLE TO CHANGE ANY TOLERANCE OR OTHER DETAIL SPECIFIED ON THIS DRAWING NOTIFY THE PURCHASER PROMPTLY.

PX-299

MAXIMUM ALLOWABLE TOLERANCES HAVE BEEN DETERMINED AND DEVIATIONS WILL BE CAUSE FOR REJECTION. REMOVE ALL BURRS AND SHARP EDGES

REQ. PER UNIT	USED ON			
	MODEL	PROJECT NO.	ASS'Y. NO.	DATE
1	RTF			9-23-57
1	RTF-2	P/A		11/20/57



A - 11/64 (.171) D 4 REQ.
 B - 13/64 (.203) D 1 REQ.

NOTICE TO PERSONS RECEIVING THIS DRAWING

THE TECHNICAL MATERIEL CORPORATION claims proprietary right in the material disclosed hereon. This drawing is issued in confidence for engineering information only and may not be reproduced or used to manufacture anything shown hereon without permission from THE TECHNICAL MATERIEL CORPORATION to the user. This drawing is loaned for mutual assistance and is subject to recall at any time.

Property of:

THE TECHNICAL MATERIEL CORPORATION
 MAMARONECK, NEW YORK

REQ.	ITEM	PART NO.	DESCRIPTION	SYMBOL
	1/4 THK.		THE TECHNICAL MATERIEL CORP.	
	STOCK SIZE		MAMARONECK. NEW YORK	
	TEFLON		INSULATOR, R.F. PLATE	
	MATERIAL	WEIGHT PER PC.	POW / AMP	
	TYPE & TEMPER		CDD 9/23/55	11/11/56
	HEAT TREAT. SPEC.		DRAWN	ELEC. DES. APP. MECH. DES. APP.
	FINISH & SPEC. NO.		CHECKED	FINAL APPROVAL

ISSUE	ITEM	CHANGED FROM	DATE	CN. NO.	DRAFTS	CHECKER	ENG. APP.
TOLERANCES		SCALE					
ALL OTHERS	DEC. DIM. ±	DRILL, PUNCH, COMMERCIAL STOCK SIZES AND MANUFACTURERS TOLERANCES ARE NOT INCLUDED.					
	FRAC. DIM. ± 1/64						
	ANGULAR DIM. ±						

PX-299