

IF IT IS FOUND DESIRABLE TO CHANGE ANY TOLERANCE OR OTHER DETAIL SPECIFIED ON THIS DRAWING NOTIFY THE PURCHASER PROMPTLY.

PX-292

MAXIMUM ALLOWABLE TOLERANCES HAVE BEEN DETERMINED AND DEVIATIONS WILL BE CAUSE FOR REJECTION. REMOVE ALL BURRS AND SHARP EDGES

REQ. PER UNIT

USED ON

MODEL

PROJECT NO.

ASS'Y. NO.

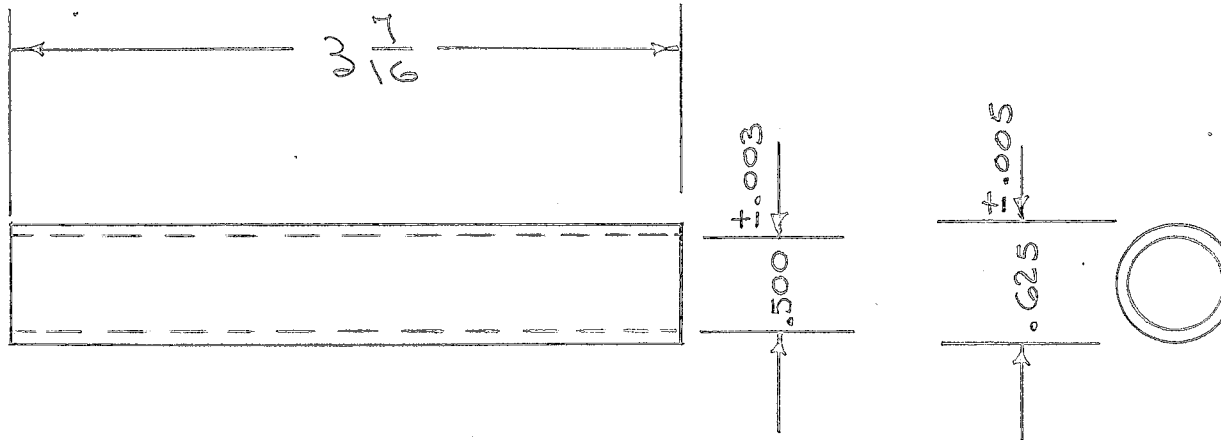
DATE

1

RR-115

A-1070

8/9/55



C	1	"OBSOLETE" NOTE DELETED	11.19.61	12964	LS	Am	MM
B	2	OBSOLETE NOTE ADDED	3-20-63	8594	LS	Am	MM
A	1	ID WAS 1/2"; O.D. WAS 5/8"	11/6/58	1	Am	LS	MM
		MATERIAL WAS BAKELITE					

REQ.	ITEM	PART NO.	DESCRIPTION	SYMBOL
		1/2 ID - 5/8 OD.	THE TECHNICAL MATERIEL CORP.	
		STOCK SIZE	MAMARONECK. NEW YORK	
		PHENOLIC	CASE, RESISTOR	
		MATERIAL	WEIGHT PER PC.	
		LE-COTTON BASE	RTB	
		TYPE & TEMPER	CDD 8/8/55	
			DRAWN	ELEC. DES. APP.
			MECH. DES. APP.	
			CHECKED	FINAL APPROVAL
		NATURAL		
		FINISH & SPEC. NO.		

TOLERANCES		SCALE
ALL OTHERS	DEC. DIM. ± FRAC. DIM. ± 1/64 ANGULAR DIM. ±	DRILL, PUNCH, COMMERCIAL STOCK SIZES AND MANUFACTURERS TOLERANCES ARE NOT INCLUDED.

PX-292 C