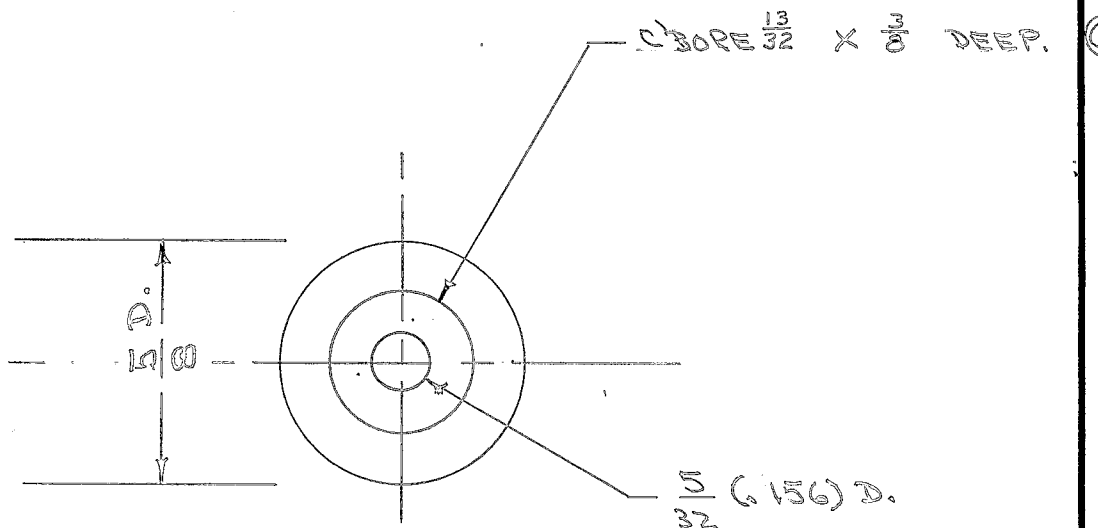
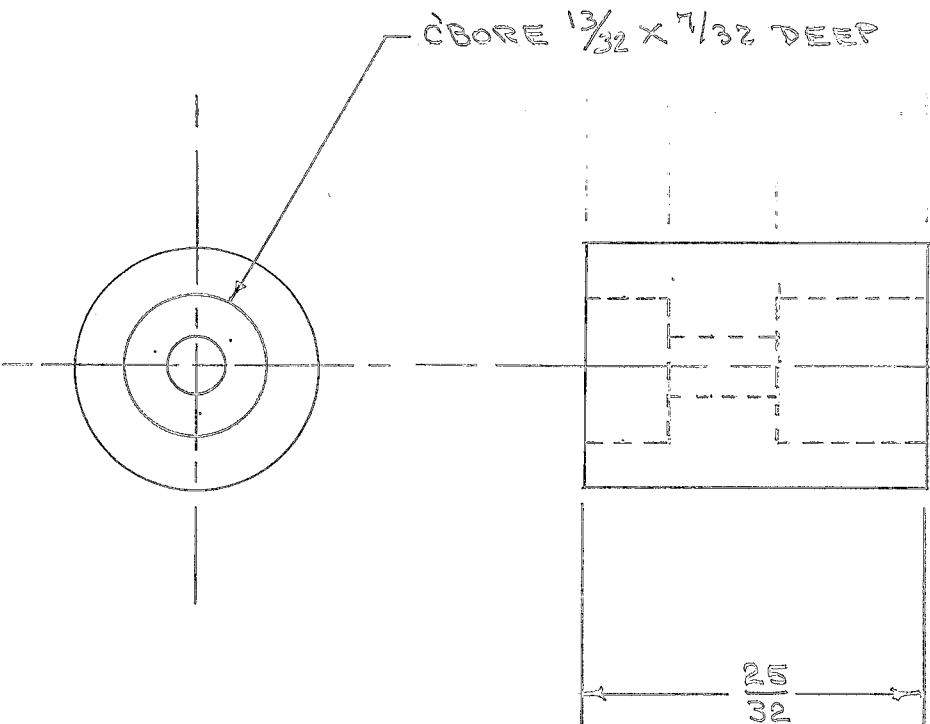


IF IT IS FOUND DESIRABLE TO CHANGE ANY TOLERANCE OR OTHER DETAIL SPECIFIED ON THIS DRAWING NOTIFY THE PURCHASER PROMPTLY.

PX-242 D

MAXIMUM ALLOWABLE TOLERANCES HAVE BEEN DETERMINED AND DEVIATIONS WILL BE CAUSE FOR REJECTION. REMOVE ALL BURRS AND SHARP EDGES

REQ PER UNIT	USED ON			
	MODEL	PROJECT NO.	ASS'Y. NO.	DATE
1	PNO-1	285		9-20-54
1	PNO-2	285		9-20-54



REF: FRANKLIN FIBER CO. TYPE PBE

D	6	C'BORE 13/32 WAS 3/8	7/17/57	4	SL.	JACK	WRE
C	5	13/32 WAS 3/8	2-11-57	3	SL.	TO	WRE
B	4	MAT. WAS FIBER	11-17-57	2	P.B.	JACK	WRE
A	3	3/8 WAS 7/16	10/29/54	1	P.B.	WRE	WRE
	2	11/32 WAS 7/16					
	1	25/32 WAS 7/8					

REQ.	ITEM	PART NO.	DESCRIPTION	SYMBOL
		5/8 D. ROD.	THE TECHNICAL MATERIEL CORP. MAMARONECK, NEW YORK	CLAMP, CONDENSER P.M.O.
		STOCK SIZE		
		PHENOLIC	C10 D. 9-20-54	WRE
		MATERIAL WEIGHT PER PC.		
		LINEN BASE	DRAWN	ELEC. DES. APP.
		TYPE & TEMPER		
		HEAT TREAT. SPEC.	CHECKED	FINAL APPROVAL
		FINISH & SPEC. NO.		

ISSUE	ITEM	CHANGED FROM	DATE	CN. NO.	DRAFTS	CHECKER	ENG. APP.
TOLERANCES		SCALE					
ALL OTHERS	DEC. DIM. ±	DRILL, PUNCH, COMMERCIAL STOCK SIZES AND MANUFACTURERS TOLERANCES ARE NOT INCLUDED.					
	FRAC. DIM. ± 1/64						
	ANGULAR DIM. ±						

PX-242 D