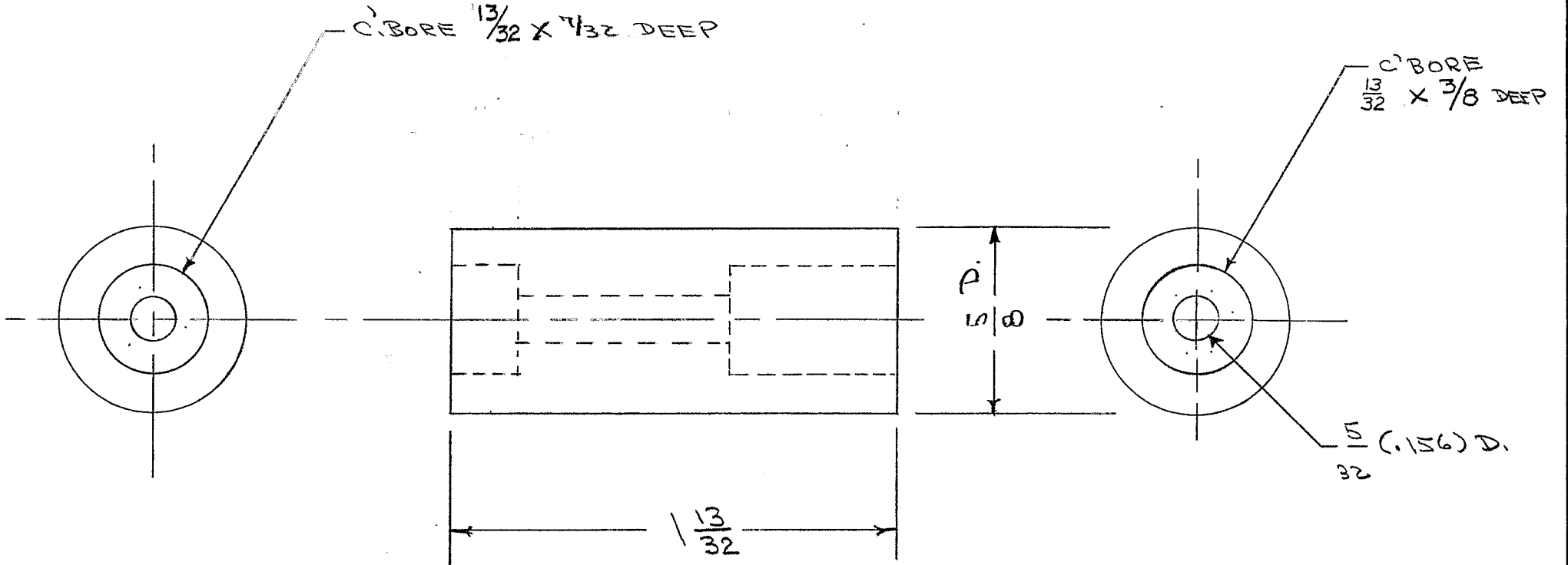


IF IT IS FOUND DESIRABLE TO CHANGE ANY TOLERANCE OR OTHER DETAIL SPECIFIED ON THIS DRAWING NOTIFY THE PURCHASER PROMPTLY.

PX-241 D

MAXIMUM ALLOWABLE TOLERANCES HAVE BEEN DETERMINED AND DEVIATIONS WILL BE CAUSE FOR REJECTION. REMOVE ALL BURRS AND SHARP EDGES

| REQ. PER UNIT | USED ON | | | |
|---------------|---------|-------------|------------|---------|
| | MODEL | PROJECT NO. | ASS'Y. NO. | DATE |
| 1 | PMO-1 | 285 | | 9-20-54 |
| 1 | PMO-2 | 285 | | 9-20-54 |



REF: FRANKLIN FIBER CO. TYPE P.B.E.

| ISSUE | ITEM | CHANGED FROM | DATE | CN. NO. | DRAFTS | CHECKER | ENG. APP. |
|-------|------|---------------------------|----------|---------|--------|---------|-----------|
| D | 2 | C'BORE 13/32 WAS 3/8 | 7/17/57 | 4 | SC. | FAIR | ALL |
| C | 5 | C'BORE - 3/8 DEEP WAS 1/2 | 2-11-57 | 3 | SC. | FAIR | ALL |
| B | 4 | MAT. WAS FIBER | 11-17-54 | 2 | P.B. | FAIR | ALL |
| A | 3 | 1/2 WAS 9/16 | 10/29/54 | 1 | FAIR | P.B. | ALL |
| | 2 | 15/32 WAS 9/16 | | | | | |
| | 1 | 13/32 WAS 1/2 | | | | | |

| REQ. | ITEM | PART NO. | DESCRIPTION | SYMBOL |
|------|------|--------------------|------------------------------|---------------------------------|
| | | 5/8 ROD | THE TECHNICAL MATERIEL CORP. | |
| | | STOCK SIZE | MAMARONECK. NEW YORK | |
| | | PHENOLIC | CLAMP, RELAY | |
| | | MATERIAL | P.M.O. | |
| | | WEIGHT PER PC. | | |
| | | LINEN BASE | | |
| | | TYPE & TEMPER | c.d.d. 9/20/54 | |
| | | HEAT TREAT. SPEC. | DRAWN | ELEC. DES. APP. MECH. DES. APP. |
| | | FINISH & SPEC. NO. | CHECKED | FINAL APPROVAL |

TOLERANCES

SCALE

ALL OTHERS
DEC. DIM. ±
FRAC. DIM. ± 1/64
ANGULAR DIM. ±

DRILL, PUNCH, COMMERCIAL STOCK
SIZES AND MANUFACTURERS
TOLERANCES ARE NOT INCLUDED.

PX-241 D