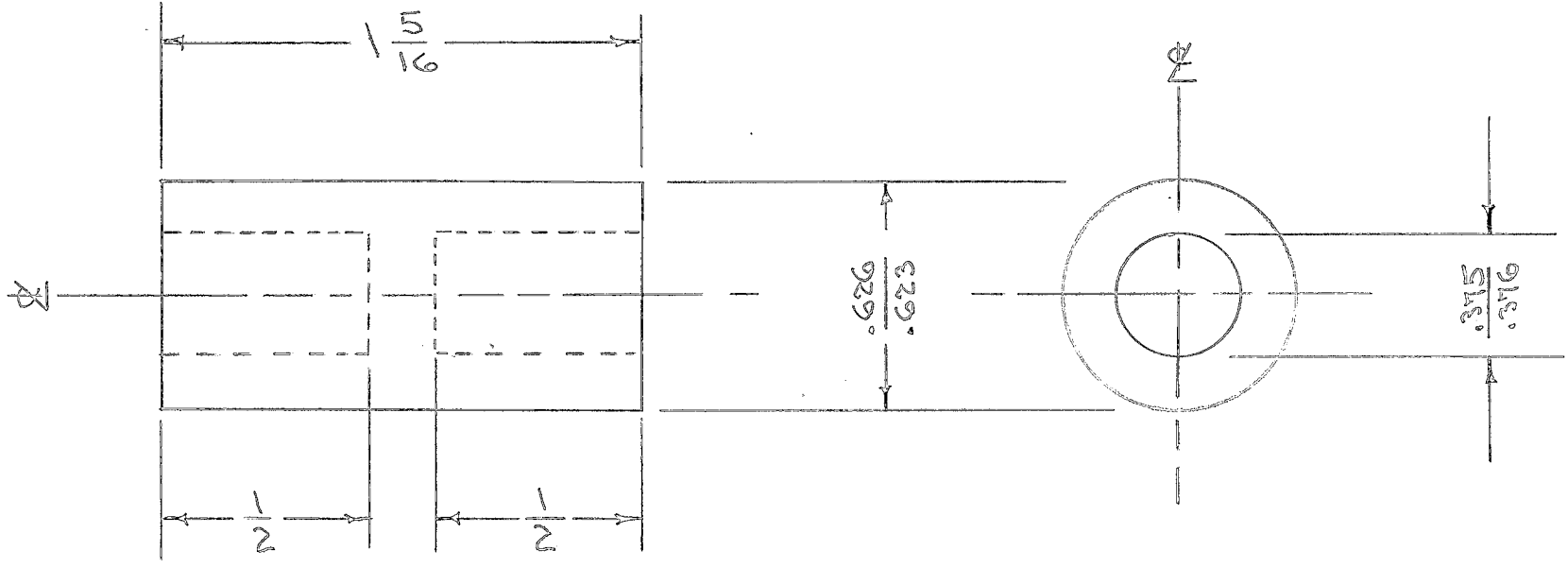


IF IT IS FOUND DESIRABLE TO CHANGE ANY TOLERANCE OR OTHER DETAIL SPECIFIED ON THIS DRAWING NOTIFY THE PURCHASER PROMPTLY.

PX-230 B

MAXIMUM ALLOWABLE TOLERANCES HAVE BEEN DETERMINED AND DEVIATIONS WILL BE CAUSE FOR REJECTION. REMOVE ALL BURRS AND SHARP EDGES

REQ. PER UNIT	USED ON			
	MODEL	PROJECT NO.	ASS'Y. NO.	DATE
1	TAC-1	132	A-716	1-4-54



B	1	375/376 WAS 376/378	3/1/54	2	C.D.D.	WAB	WEC
A	1	1/2 WAS 3/16	3/10/54	1	CDD	WAB	WEC

ISSUE	ITEM	CHANGED FROM	DATE	CN. NO.	DRAFTS	CHECKER	ENG. APP.
TOLERANCES		SCALE $\frac{1}{2}$					
ALL OTHERS	DEC. DIM. \pm $\frac{1}{64}$ FRAC. DIM. \pm ANGULAR DIM. \pm	DRILL, PUNCH, COMMERCIAL STOCK SIZES AND MANUFACTURERS TOLERANCES ARE NOT INCLUDED.					

REQ.	ITEM	PART NO.	DESCRIPTION	SYMBOL
		5/8 D	THE TECHNICAL MATERIEL CORP. MAMARONECK, NEW YORK	
		STOCK SIZE		
		TEFLON	INSULATOR, CONNECTING BUSHING	
		MATERIAL	WEIGHT PER PC.	
			TAC-1	
		TYPE & TEMPER	C.D.D.	WAB
			DRAWN	WAB
			ELEC. DES. APP.	WAB
			MECH. DES. APP.	WAB
		HEAT TREAT. SPEC.	CHECKED	WAB
			FINAL APPROVAL	WAB
		FINISH & SPEC. NO.		

PX-230 B