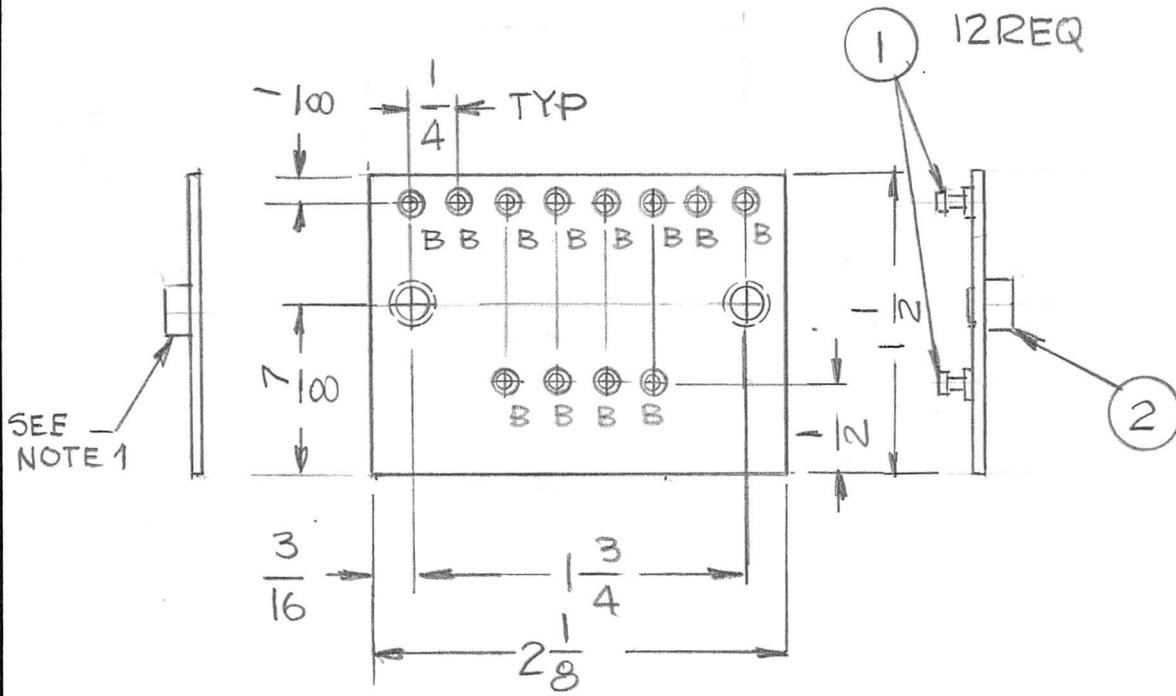


APPLICATION			REVISIONS						
QTY	MODEL USED ON	ASS'Y NO.	LTR	DESCRIPTION	DATE	E.M.N.NO	DRAFT	CHKD	APPD
1	HFL-100C	5641	X	DWG NO. WAS PX1257	11-5-76		GDL		
				ORIGINAL RELEASE FOR PRODUCTION 3-8-77			G.D.L.		*



HOLES

A - .189 DIA 2REQ
 B - .081 DIA 12REQ

NOTES:

AFTER ASSY., DRILL OUT THREADS ONLY ON THIS SPACER WITH .171 (11/64) DRILL.

RF LD 3060

REQ'D	ITEM	PART NUMBER	DESCRIPTION	SYM.
2	2	TE108-1	NUT, PLAIN CLINCH	
12	1	TE127-2	TERMINAL, STUD	

LIST OF MATERIAL

UNLESS OTHERWISE SPECIFIED DIMENSIONS ARE IN INCHES AND INCLUDE CHEMICALLY APPLIED OR PLATED FINISHES	FINAL APPROVAL <i>GDL</i>	DATE <i>9/8/77</i>
MATERIAL .062THK G10 GLASS EPOXY LAM.	MECH. DES.	DATE
FINISH NATURAL	ELECT. DES.	DATE
	CHECKED	DATE
	DRAWN <i>GDL</i>	DATE <i>10-10-76</i>

THE TECHNICAL MATERIEL CORP.
 MAMARONECK, NEW YORK

TERMINAL BOARD

NOTICE TO PERSONS RECEIVING THIS DRAWING
 THE TECHNICAL MATERIEL CORPORATION claims proprietary right in the material disclosed hereon. This drawing is issued in confidence for engineering information only and may not be reproduced or used to manufacture anything shown hereon without permission from THE TECHNICAL MATERIEL CORPORATION to the user. This drawing is loaned for mutual assistance and is subject to recall at any time.

SIZE A	CODE IDENT. NO. 82679	DWG NO. PX1258	ISSUE 1
SCALE 1:1		SHEET OF	