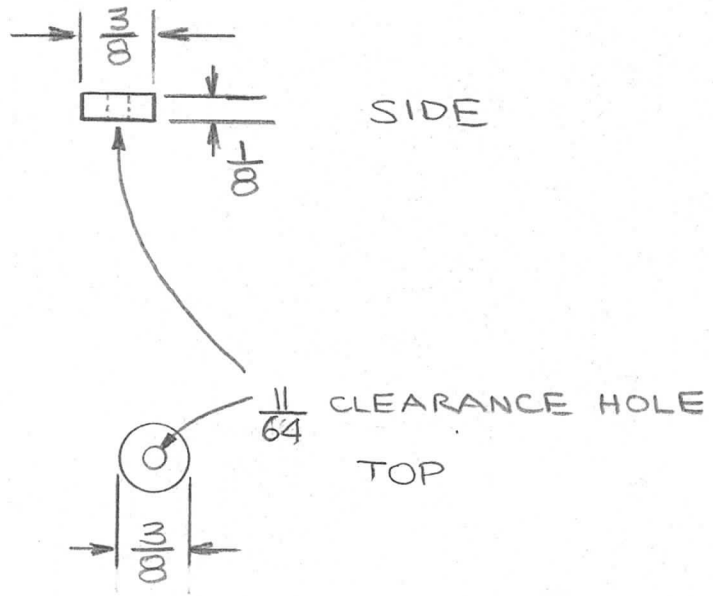


QTY	MODEL USED ON	ASS'Y NO.	LTR	DESCRIPTION				
1	A5611		X	EXP. RELEASE	10-2-74			
			Ø	ORIG RELEASE FOR PROD	3/13/75		Q	



UNLESS OTHERWISE SPECIFIED DIMENSIONS ARE IN INCHES AND INCLUDE CHEMICALLY APPLIED OR PLATED FINISHES		REQ'D	ITEM	PART NUMBER	DESCRIPTION	SYM.	
DECIMALS: .X ± .05, .XX ± .01, .XXX ± .005 FRACTIONS: 1/64, ANGLES: 0° -30'		LIST OF MATERIAL					
MATERIAL ROUND 3/8 TEFLON FINISH		FINAL APPROVAL: <i>F. IANNUZZI</i> DATE: 3/13/75		<b>THE TECHNICAL MATERIEL CORP.</b> MAMARONECK, NEW YORK			
		MECH. DES. DATE: 2-7-75 ELECT. DES. DATE:		OUTPUT COUPLER CAPACITOR INSULATION			
		CHECKED: F. IANNUZZI DATE: 12-14-74 DRAWN: F. IANNUZZI DATE: 6/19/74					
<b>NOTICE TO PERSONS RECEIVING THIS DRAWING</b> THE TECHNICAL MATERIEL CORPORATION claims proprietary right in the material disclosed hereon. This drawing is issued in confidence for engineering information only and may not be reproduced or used to manufacture anything shown hereon without permission from THE TECHNICAL MATERIEL CORPORATION to the user. This drawing is loaned for mutual assistance and is subject to recall at any time.				SIZE: A	CODE IDENT. NO.: 82679	DWG NO.: PX 1250	ISSUE: <i>Ø</i>
				SCALE		SHEET OF	