

5

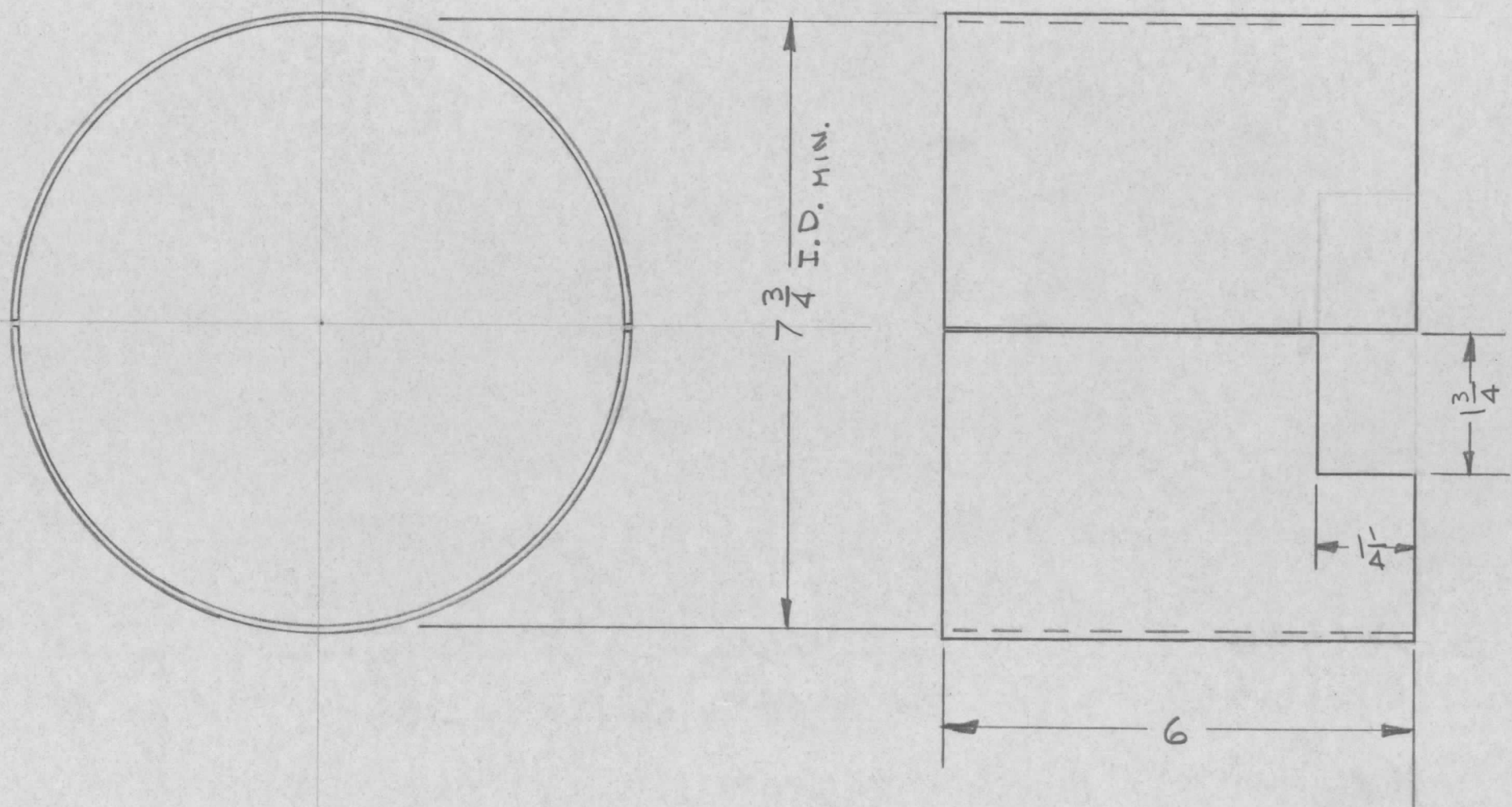
4

3

2

1

REVISIONS							
E.M.N. NO.	DRAFT	CHKD	ZONE	LTR	DESCRIPTION	DATE	APPROVED
	CL			Ø	ORIG RELEASE FOR PRODUCTION	2-19-73	



1. FORM WHOLE FLUE
2. CUT IN HALF.
3. NOTCH 1 PIECE AS SHOWN

1	HFTA-5KJ	AX5151
QTY / UNIT	MODEL USED ON	ASS'Y NO.
APPLICATION		
	CODE	

NOTICE TO PERSONS RECEIVING THIS DRAWING
 THE TECHNICAL MATERIEL CORPORATION claims proprietary right in the material disclosed hereon. This drawing is issued in confidence for engineering information only and may not be reproduced or used to manufacture anything shown hereon without permission from THE TECHNICAL MATERIEL CORPORATION to the user. This drawing is loaned for mutual assistance and is subject to recall at any time.

UNLESS OTHERWISE SPECIFIED DIMENSIONS ARE IN INCHES AND INCLUDE CHEMICALLY APPLIED OR PLATED FINISHES	
DECIMALS .X ± .05 .XX ± .01 .XXX ± .005	FRACTIONS 1/64 ANGLES 0° -30'
MATERIAL 3 PLY FIBERGLASS	
FINISH S115 TMC GREY	

REQ'D	ITEM	PART NUMBER	DESCRIPTION	SYM.
LIST OF MATERIAL				
THE TECHNICAL MATERIEL CORP. MAMARONECK, NEW YORK				
FLUE, TOP, OUTER				
FINAL APPROVAL	<i>[Signature]</i>	DATE	8 FEB 73	
MECH. DES.	<i>[Signature]</i>	DATE	8 FEB 73	
ELECT. DES.		DATE		
CHECKED		DATE		
DRAWN	<i>[Signature]</i>	DATE	15 JAN 73	
SIZE	B	CODE IDENT. NO.	82679	DWG NO.
				PX1187
SCALE		SHEET		OF
				ISSUE
				Ø