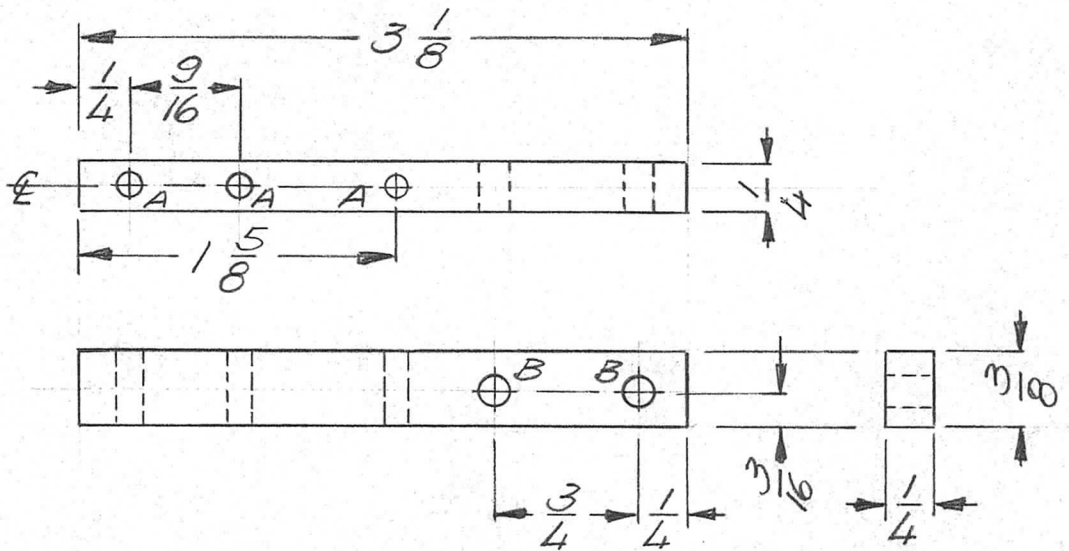


APPLICATION			REVISIONS						
QTY	MODEL USED ON	ASS'Y NO.	LTR	DESCRIPTION	DATE	E.M.N.NO	DRAFT	CHKD	APPD
1	KIT 382	AX5144	0	ORIG RELEASE FOR PROD	3/30/72		CV		



A HOLE - $\frac{1}{8}$ DIA. - 3 REQ.
 B HOLE - $\frac{5}{32}$ DIA. - 2 REQ.

UNLESS OTHERWISE SPECIFIED DIMENSIONS ARE IN INCHES AND INCLUDE CHEMICALLY APPLIED OR PLATED FINISHES	REQ'D	ITEM	PART NUMBER	DESCRIPTION	SYM.
DECIMALS .X ± .05 .XX ± .01 .XXX ± .005	F.B.		LIST OF MATERIAL		
FRACTIONS 1/64 ANGLES 0° - 30'	FINAL APPROVAL		DATE	THE TECHNICAL MATERIEL CORP.	
MATERIAL G11	AL PETROCCA		29 Mar 72	MAMARONECK, NEW YORK	
FINISH	ELECT. DES.		DATE	ARM. SWITCH	
	CHECKED		DATE		
	DRAWN GE		DATE		
NOTICE TO PERSONS RECEIVING THIS DRAWING THE TECHNICAL MATERIEL CORPORATION claims proprietary right in the material disclosed hereon. This drawing is issued in confidence for engineering information only and may not be reproduced or used to manufacture anything shown hereon without permission from THE TECHNICAL MATERIEL CORPORATION to the user. This drawing is loaned for mutual assistance and is subject to recall at any time.			SIZE A	CODE IDENT. NO. 82679	ISSUE Ø
			DWG NO. PX 1179	SHEET OF	
			SCALE 1:1		