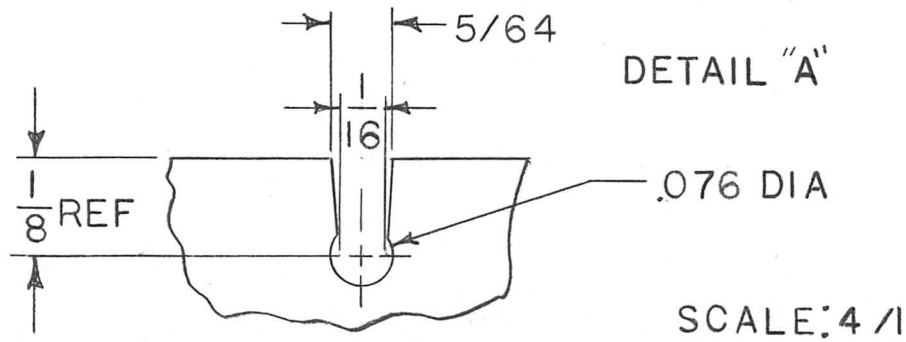
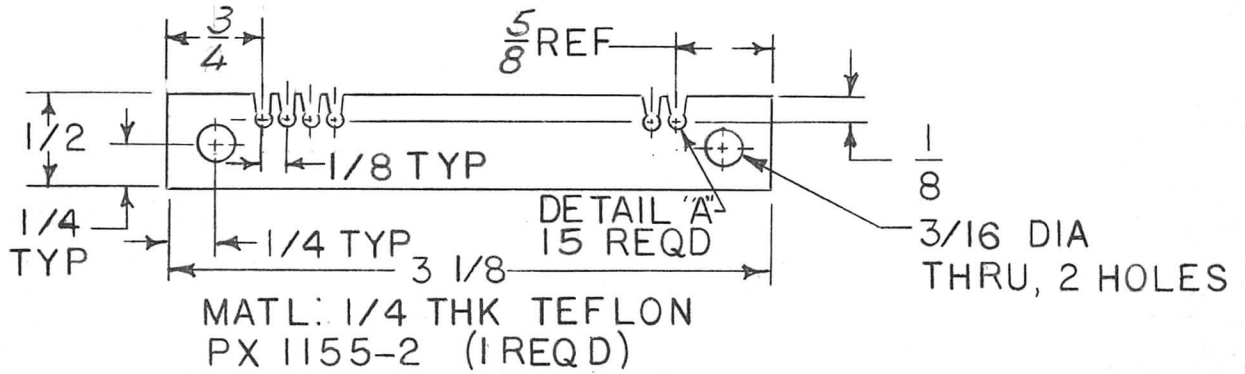
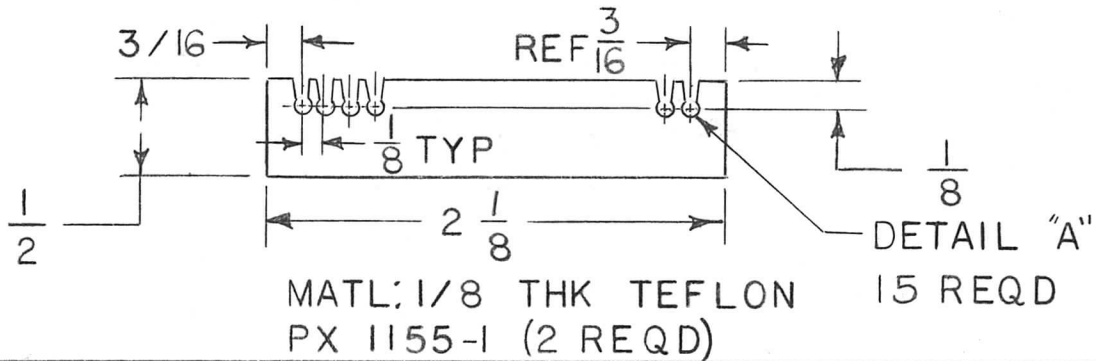


APPLICATION			REVISIONS						
QTY	MODEL USED ON	ASS'Y NO.	LTR	DESCRIPTION	DATE	E.M.N.NO	DRAFT	CHKD	APPD
1	TLAMIK	CL463	X	EXP RELEASE	12-10-70		RF		
1	TLAAIK	CL463	Ø	ORIG RELEASE FOR PRO.	12-17-70		CV		PEH
			A	CHNG LG & SLOTS REQD	1-19-71	20193	RF	W	PEH
			B	ON PX 1155-1 CHG. OVRL. DIM.	12/1/72	20516	GE	ef	cf



UNLESS OTHERWISE SPECIFIED DIMENSIONS ARE IN INCHES AND INCLUDE CHEMICALLY APPLIED OR PLATED FINISHES		REQ'D	ITEM	PART NUMBER	DESCRIPTION	SYM.	
LIST OF MATERIAL							
DECIMALS: .X ± .05, .XX ± .01, .XXX ± .005 FRACTIONS: 1/64, ANGLES: 0° - 30'		FINAL APPROVAL: <i>JMM</i> DATE: 18 DEC 70		THE TECHNICAL MATERIEL CORP. MAMARONECK, NEW YORK SPACER, STATIC CHOKE			
MATERIAL AS NOTED		MECH. DES. <i>ase</i> DATE: 12/18/70					
FINISH		ELECT. DES. DATE:					
		CHECKED <i>W</i> DATE: 12/16/70					
		DRAWN <i>R. Fociano</i> DATE: 12-10-70					
NOTICE TO PERSONS RECEIVING THIS DRAWING THE TECHNICAL MATERIEL CORPORATION claims proprietary right in the material disclosed hereon. This drawing is issued in confidence for engineering information only and may not be reproduced or used to manufacture anything shown hereon without permission from THE TECHNICAL MATERIEL CORPORATION to the user. This drawing is loaned for mutual assistance and is subject to recall at any time.				SIZE: A	CODE IDENT. NO.: 82679	DWG NO.: PX 1155	ISSUE: B
				SCALE: 1/1	SHEET 1 OF 1		