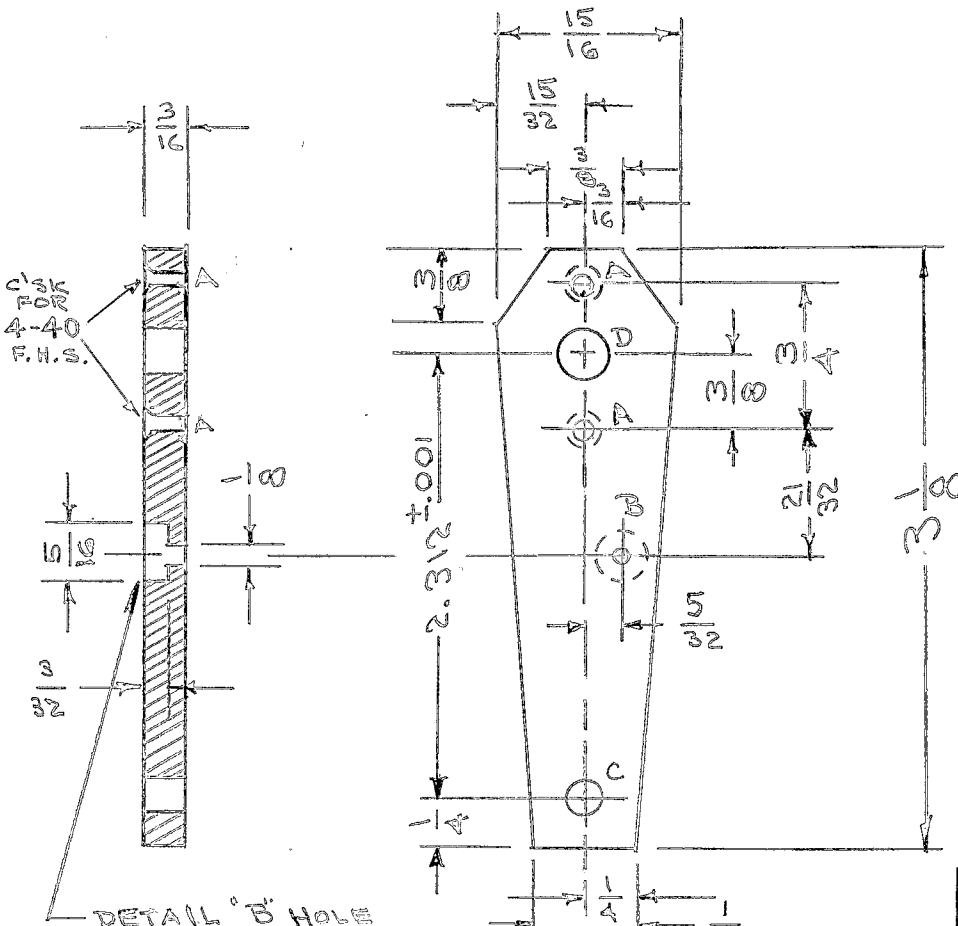


IF IT IS FOUND DESIRABLE TO CHANGE ANY TOLERANCE OR OTHER DETAIL SPECIFIED ON THIS DRAWING NOTIFY THE PURCHASER PROMPTLY.

PX-165 H

MAXIMUM ALLOWABLE TOLERANCES HAVE BEEN DETERMINED AND DEVIATIONS WILL BE CAUSE FOR REJECTION. REMOVE ALL BURRS AND SHARP EDGES

REQ. PER UNIT	USED ON			
	MODEL	PROJECT NO.	ASS'Y. NO.	DATE
1	VOX		A-583	12/16/54
1	PMO-1	285	"	"
1	PMO-2	285	"	"
1	VOX-1	291		1/17/55
1	VOX-2	291		1/17/55
1	RTP			2-1-56
1	RTP-2			11-10-58



- A-DRILL & C'SINK FOR 4-40 F.H.S. - 2 HOLES REQ.
- B- SEE DETAIL -
- C- NO. 11 (191) D. -
- D- .252 ± .0015

ISSUE	ITEM	CHANGED FROM	DATE	CN. NO.	DRAFTS	CHECKER	ENG. APP.
H	1	'A' HOLE WAS 3-48 F.H.S.	10/23/54	12664	1/58		
G	2	'D' HOLE WAS 17/64 D.	7/27/50	2662	cy	file	
F	1	'A' HOLE - WAS 3-48					
E	1	17/64 D WAS 1/4 D	1/2/53				
D	2	4-40 C/SINK Hole Clarified	8/27/55	5			
C	1	3/8 Dim. Added	1/13/55	4			
		B HOLE DETAIL ADDED	7/6/54	3			

REQ.	ITEM	PART NO.	DESCRIPTION	SYMBOL
			3/16 THK.	
			STOCK SIZE	
			PHENOLIC	
			MATERIAL	
			WEIGHT PER PC.	
			XXXX LAMINATE	
			TYPE & TEMPER	
			HEAT TREAT. SPEC.	
			NATURAL	
			FINISH & SPEC. NO.	
			THE TECHNICAL MATERIEL CORP. MAMARONECK, NEW YORK	
			ARM, CAM FOLLOWER (OVEN ASSY.)	
			CDD: 12/16/54	
			DRAWN	ELEC. DES. APP.
			CHECKED	FINAL APPROVAL
			PX-165	H

TOLERANCES

SCALE

ALL OTHERS
DEC. DIM. ± .001
FRAC. DIM. ± 1/64
ANGULAR DIM. ±

DRILL, PUNCH, COMMERCIAL STOCK
SIZES AND MANUFACTURERS
TOLERANCES ARE NOT INCLUDED.