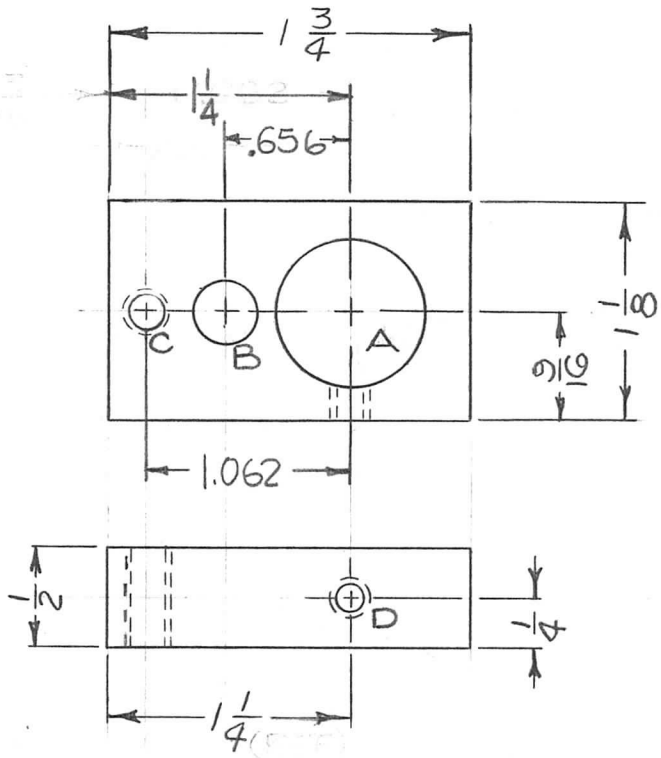


APPLICATION			REVISIONS						
QTY	MODEL USED ON	ASS'Y NO.	LTR	DESCRIPTION	DATE	E.M.N.NO	DRAFT	CHKD	APPD
1	HFRR-4		X	EXP. RELEASE	11-8-68				
			Ø	ORIG. RELEASE FOR PROD.	11-6-68	Ø	R.G.		J.W.

MATERIAL
 CLEVERLY PHENOLIC



HOLE DESCR

- A .7500 $\pm .0005$ DIA. (1 REQ)
- B .3125 $\pm .0005$ DIA. (1 REQ)
- C NO. 29 (.1360) DR & TAP #8-32 NC-2B (1 REQ)
- D NO. 43 (.0890) DR & TAP #4-40 (1 REQ)

UNLESS OTHERWISE SPECIFIED DIMENSIONS ARE IN INCHES AND INCLUDE CHEMICALLY APPLIED OR PLATED FINISHES		REQ'D	ITEM	PART NUMBER	DESCRIPTION	SYM.
DECIMALS .X $\pm .05$.XX $\pm .01$.XXX $\pm .005$		HOGAN		LIST OF MATERIALS K3252-003-30 X2		
FRACTIONS 1/64 TOLS. ANGLES 0°-30°		FINAL APPROVAL	DATE	THE TECHNICAL MATERIEL CORP.		
MATERIAL LINEN BASE XXXP PHENOLIC		M. ZEJENA	11/6/68	MAMARONECK, NEW YORK		
FINISH NATURAL S113 FUNGUS PROOF S401-451		MECH. DES.	DATE	BLOCK, ALIGNMENT, OSC		
		ELECT. DES.	DATE			
		CHECKED	DATE			
		DRAWN	DATE			
NOTICE TO PERSONS RECEIVING THIS DRAWING THE TECHNICAL MATERIEL CORPORATION claims proprietary right in the material disclosed herein. This drawing is issued in confidence for engineering information only and may not be reproduced or used to manufacture anything shown hereon without permission from THE TECHNICAL MATERIEL CORPORATION to the user. This drawing is loaned for mutual assistance and is subject to recall at any time.		SIZE	CODE IDENT. NO.	DWG NO.	ISSUE	
		A	82679	PX1049	Ø	
		SCALE 1:1		SHEET	OF	