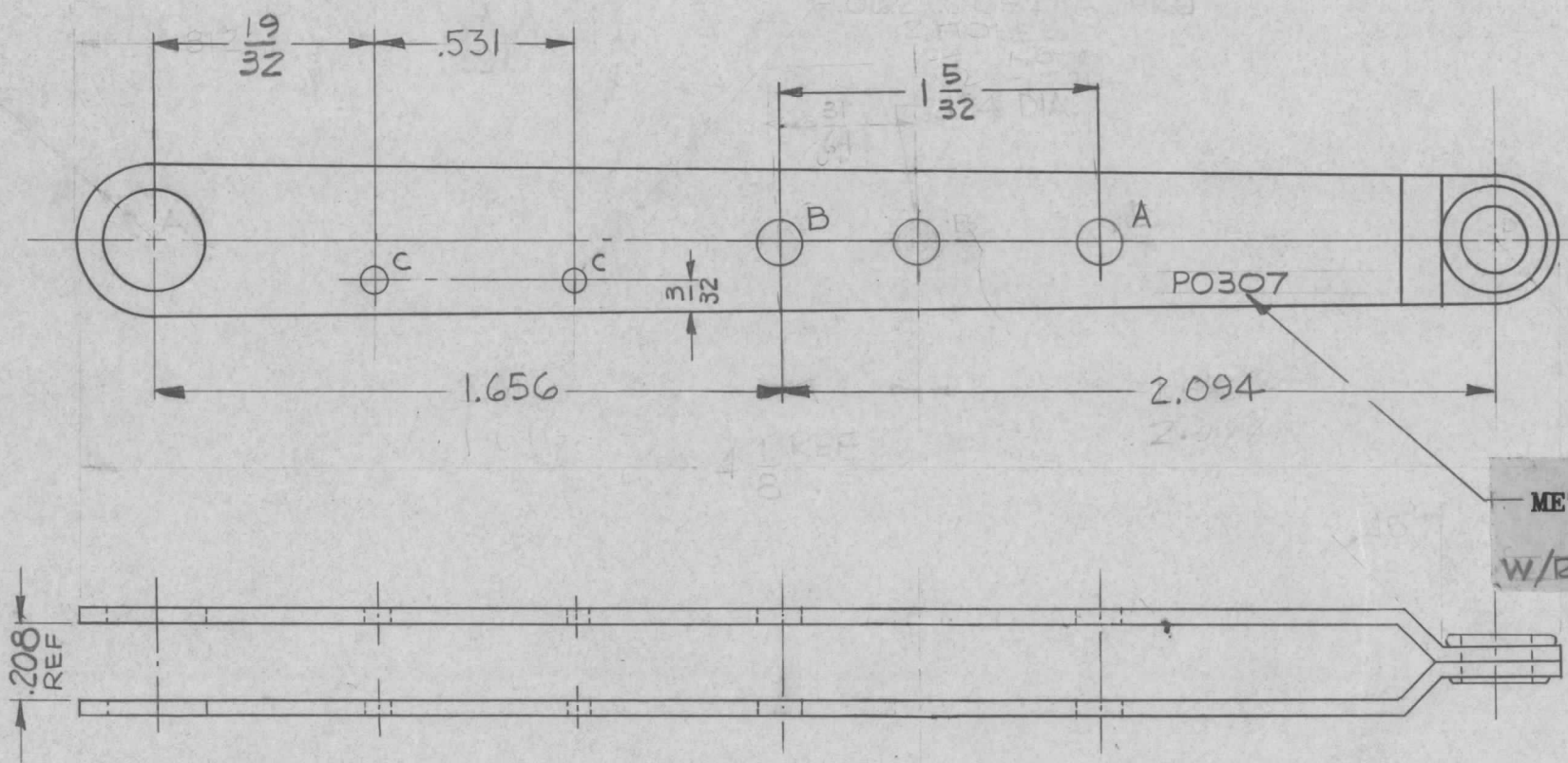


PO 307

REVISIONS					
SYM	DESCRIPTION	DATE	E.M.N. NO.	DRAFT	CHKD APPD
X	EXPERIMENTAL RELEASE	3/3/69			
Ø	ORIGINAL RELEASE FOR PRODUCTION	8-14-64	A	C. Shu	@



HOLE LEGEND		
HOLE	DESCRIPTION	REQD
A	.144 DIA	2
B	.1250 <sup>+0.0002</sup> <sub>-0.0000</sub> DIA	2
C	.062-.065 DIA	4

METAL STAMP TMC PART NO. 1/8 HIGH GOTHIC. W/REVISION LETTER

(MODIFY TMC PART NO. PO 241)

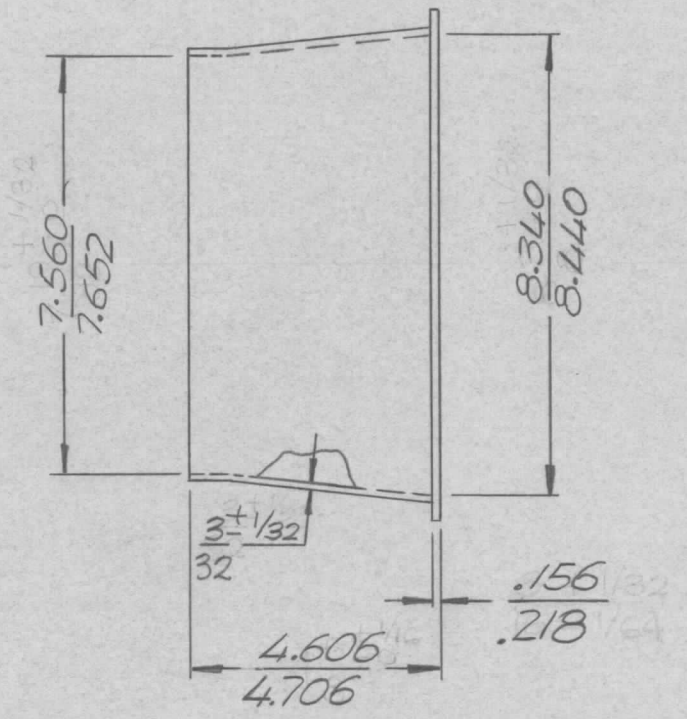
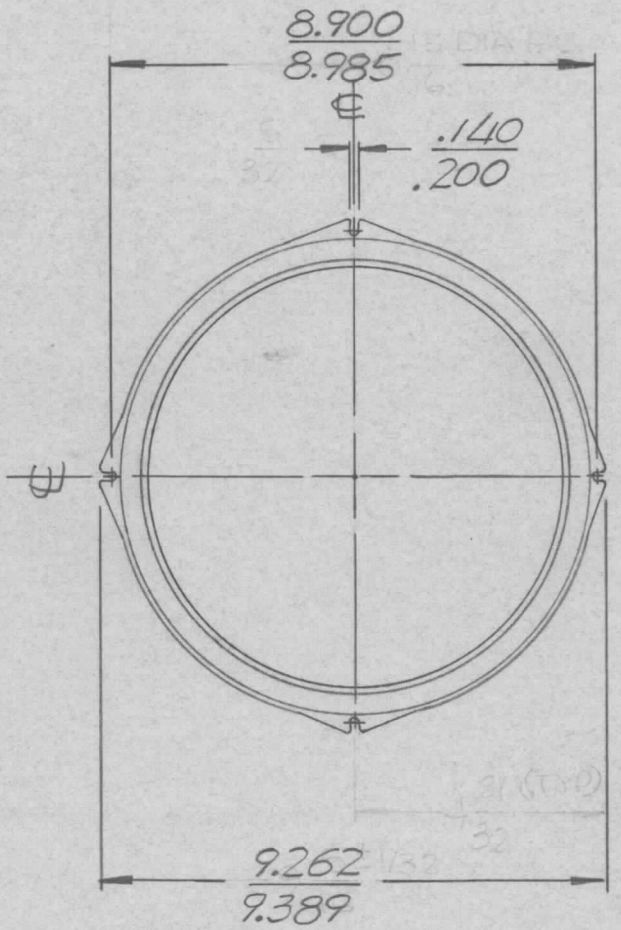
REMOVE ALL BURRS & SHARP EDGES

NOTES

1	HFRR-2	A3533
1	HFR-2	A3548
Q'TY./UNIT	MODEL USED ON	ASS'Y. NO.
SCALE	CODE	
DO NOT SCALE	A	
THE CONTENTS OF THIS DRAWING ARE THE EXCLUSIVE PROPERTY OF THE TECHNICAL MATERIEL CORP. ITS UNAUTHORIZED USE OR REPRODUCTION IN WHOLE OR IN PART IS STRICTLY FORBIDDEN.		

REQ'D.	ITEM	PART NUMBER	DESCRIPTION	SYMBOL
T. KRUY LIST OF MATERIAL				
MATERIAL			THE TECHNICAL MATERIEL CORP. MAMARONECK, NEW YORK	
FINISH			TITLE	
			ARM, DETENT	
UNLESS OTHERWISE SPECIFIED DIMENSIONS ARE IN INCHES AND INCLUDE CHEMICALLY APPLIED OR PLATED FINISHES			DRAWN	DATE
			T. Kruy	3-3-69
			CHECKED	DATE
			@	5-5-64
			ELECT. DES.	DATE
DECIMALS .X ± .05 .XX ± .01 .XXX ± .005			MECH. DES.	DATE
FRACTIONS ± 1/64 ANGLES ± 0° 30'			T. Kruy	8-14-64
			SHEET	
			PO 307 Ø	
			REV. LTR.	

REVISIONS						
ZONE	LTR	DESCRIPTION	DATE	E.M.N.NO	DRAFT	CHKD APPD
	Ø	ORIGINAL RELEASE FOR PRODUCTION	1-30-67		L.P.K.	
	A	CHG. FRACT. DIM TO DEC.	12/7/70	20142	GE	(1) P.gh



MATERIAL:  
 POLYESTER PRE MIX COMP.  
 (GREY) FIBERGLASS PER MIL-Y-1140,  
 RESIN PER MIL-R-7675.

NOTE: MATERIAL  
 FIBERGLASS REINFORCED  
 EDG. R. 20 IN.

GPT-10KLF		
QTY / UNIT	MODEL USED ON	ASS'Y NO.
APPLICATION		
CODE	S401-23 (SK316)	
NOTICE TO PERSONS RECEIVING THIS DRAWING THE TECHNICAL MATERIEL CORPORATION claims proprietary right in the material disclosed hereon. This drawing is issued in confidence for engineering information only and may not be reproduced or used to manufacture anything shown hereon without permission from THE TECHNICAL MATERIEL CORPORATION to the user. This drawing is loaned for mutual assistance and is subject to recall at any time.		

UNLESS OTHERWISE SPECIFIED DIMENSIONS ARE IN INCHES AND INCLUDE CHEMICALLY APPLIED OR PLATED FINISHES	
DECIMALS .X ± .05 .XX ± .01 .XXX ± .005	FRACTIONS TOLS. 1/64 ANGLES 0° .30'
MATERIAL	SEE NOTE
FINISH	NONE

REQ'D	ITEM	PART NUMBER	DESCRIPTION	SYM.
BUDETTI LIST OF MATERIAL				
THE TECHNICAL MATERIEL CORP. MAMARONECK, NEW YORK				
CHIMNEY, AIR				
SIZE	CODE IDENT. NO.	DWG NO.	ISSUE	
B	82679	P0309	A	
SCALE	SHEET		OF	

5

4

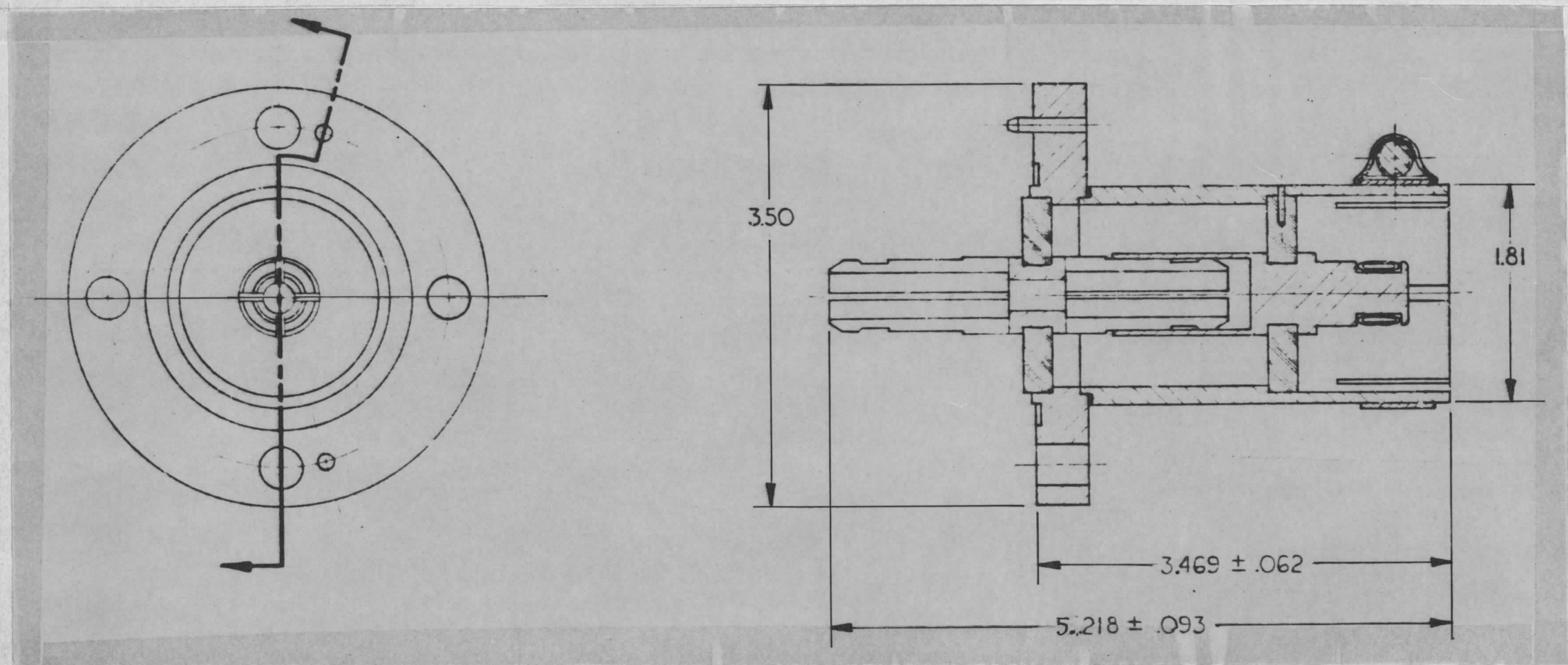
3

2

1

REVISIONS

ZONE	LTR	DESCRIPTION	DATE	E.M.N.NO	DRAFT	CHKD	APPD
	Ø	ORIG RELEASE FOR PROD	7/17/69		CV		



NOTE:  
 ALL FLANGE DIMENSIONS ARE AS PER  
 E.I.A STANDARD RS-225,  
 1.625 CONNECTOR FLANGE.

3	GPT40KEL	AS142
QTY / UNIT	MODEL USED ON	ASS'Y NO.
APPLICATION		
	CODE	

NOTICE TO PERSONS RECEIVING THIS DRAWING  
 THE TECHNICAL MATERIEL CORPORATION claims proprietary right in the material disclosed hereon. This drawing is issued in confidence for engineering information only and may not be reproduced or used to manufacture anything shown hereon without permission from THE TECHNICAL MATERIEL CORPORATION to the user. This drawing is loaned for mutual assistance and is subject to recall at any time.

UNLESS OTHERWISE SPECIFIED DIMENSIONS ARE IN INCHES AND INCLUDE CHEMICALLY APPLIED OR PLATED FINISHES

DECIMALS	FRACTIONS
.X ± .05	1/64
.XX ± .01	TOLS. ANGLES
.XXX ± .005	0° -30'
MATERIAL	
FINISH	

REQ'D	ITEM	PART NUMBER	DESCRIPTION	SYM.
BUDETTM LIST OF MATERIAL				
FINAL APPROVAL <i>[Signature]</i>			DATE 7/17/69	
MECH. DES. <i>AVC</i>			DATE	
ELECT. DES.			DATE	
CHECKED <i>[Signature]</i>			DATE 7/19/69	
DRAWN <i>[Signature]</i>			DATE 7/19/69	
S401-48(950)			SIZE B	CODE IDENT. NO. 82679
			DWG NO. PO 318	ISSUE Ø
SCALE			SHEET	OF

5

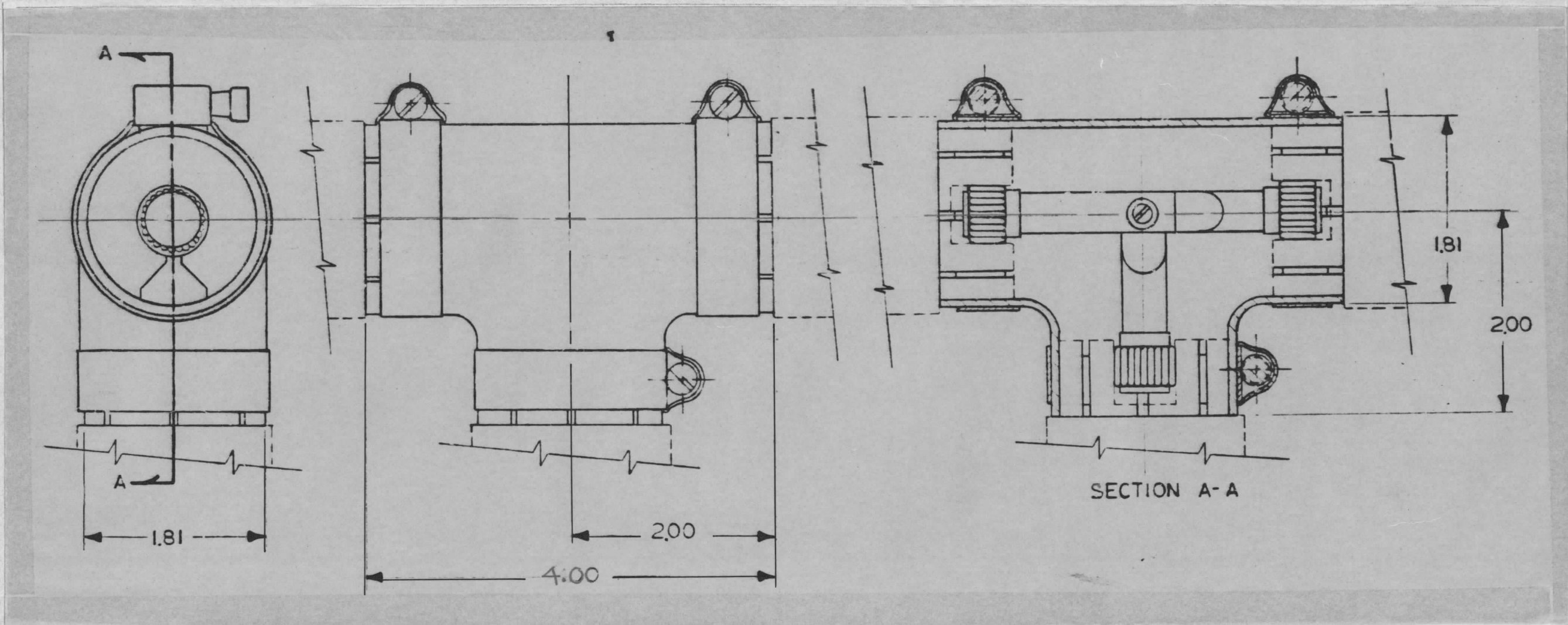
4

3

2

1

REVISIONS							
ZONE	LTR	DESCRIPTION	DATE	E.M.N.NO	DRAFT	CHKD	APPD
	Ø	ORIG RELEASE FOR PROD	7/14/69		CV		



1	GPT40KEL	AS142
QTY / UNIT	MODEL USED ON	ASS'Y NO.
APPLICATION		
	CODE	

**NOTICE TO PERSONS RECEIVING THIS DRAWING**  
 THE TECHNICAL MATERIEL CORPORATION claims proprietary right in the material disclosed hereon. This drawing is issued in confidence for engineering information only and may not be reproduced or used to manufacture anything shown hereon without permission from THE TECHNICAL MATERIEL CORPORATION to the user. This drawing is loaned for mutual assistance and is subject to recall at any time.

UNLESS OTHERWISE SPECIFIED DIMENSIONS ARE IN INCHES AND INCLUDE CHEMICALLY APPLIED OR PLATED FINISHES

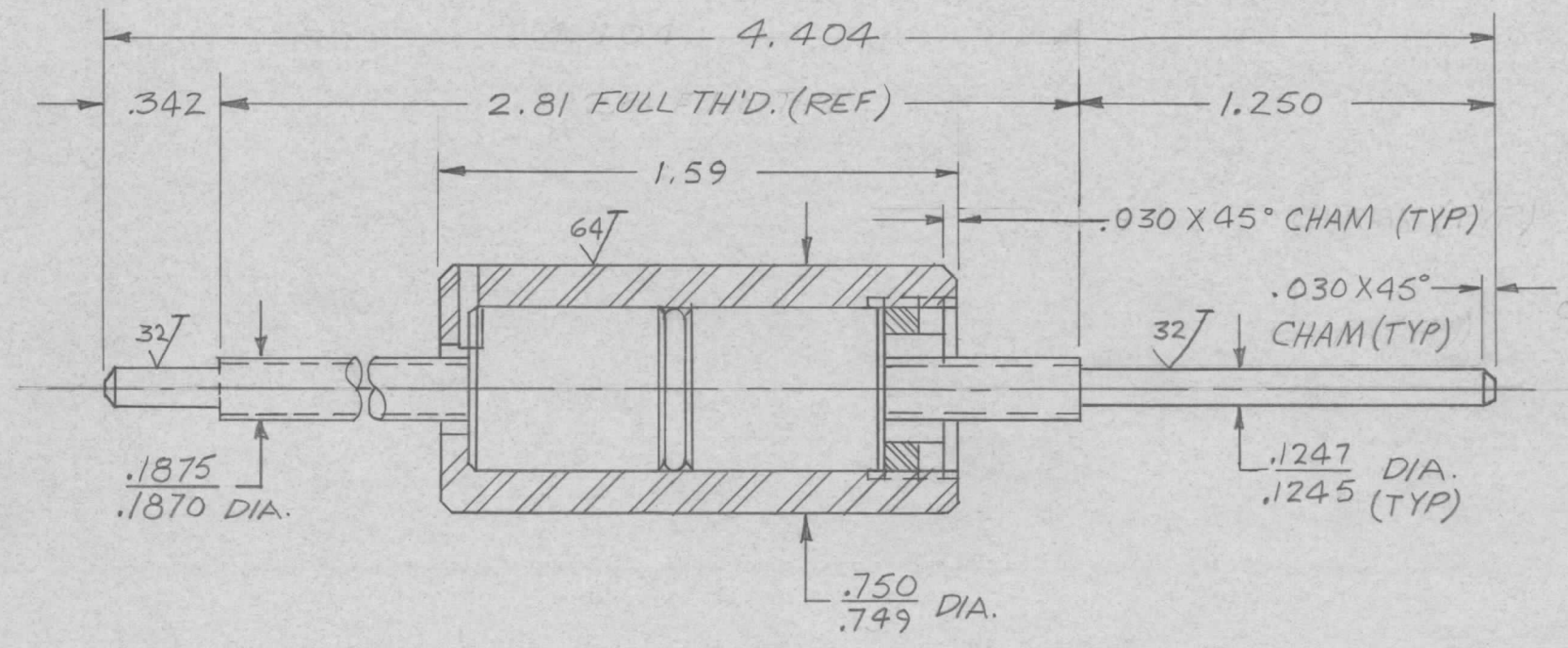
DECIMALS	FRACTIONS
.X ± .05	1/64
.XX ± .01	TOLS. ANGLES
.XXX ± .005	0° .30'

MATERIAL

FINISH

REQ'D	ITEM	PART NUMBER	DESCRIPTION	SYM.
<b>BUDETTI</b>				
LIST OF MATERIAL				
THE TECHNICAL MATERIEL CORP. MAMARONECK, NEW YORK				
SPLIT TEE ASSY (1 5/8 COAXIAL)				
MATERIAL		5401-48(946)	SIZE B	CODE IDENT. NO. 82679
FINISH			DWG NO. PO 319	ISSUE Ø
SCALE			SHEET	OF

REVISIONS						
ZONE	LTR	DESCRIPTION	DATE	E.M.N.NO	DRAFT	CHKD APPD
	X	EXP. RELEASE	8.21.68		H.S.	JAD
	Ø	ORIG. RELEASE FOR PROD	11/4/68	Ø	R.G.	
	A	ADD. A0128 ASSY NO.	7/16/69	-#	GE	WB



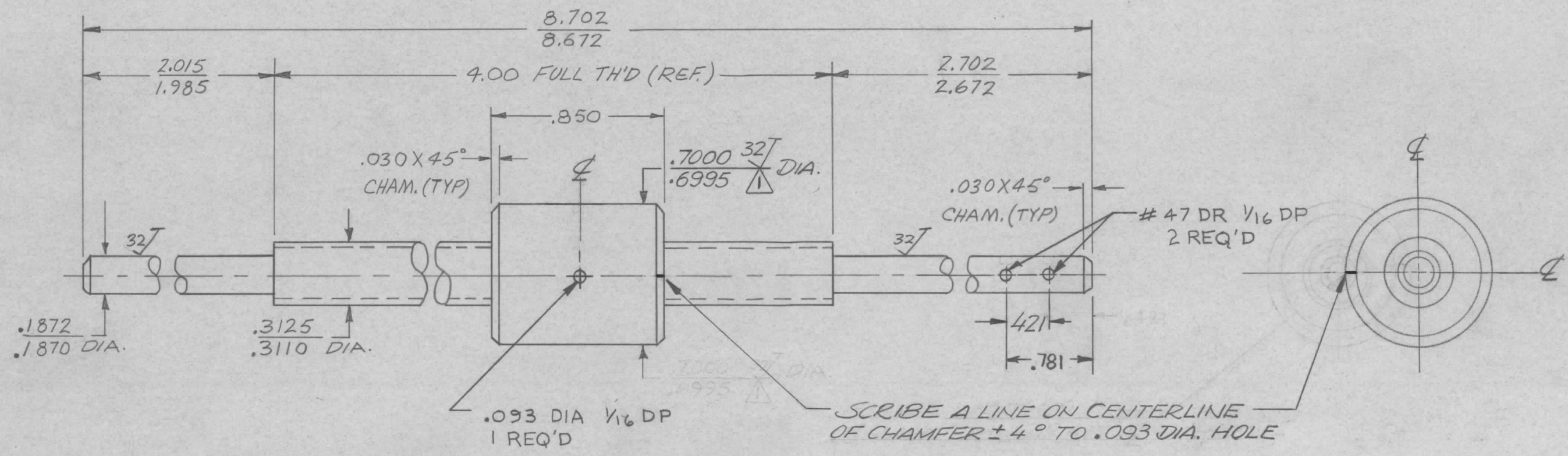
BALL TH'D DATA  
.187 SCREW TH'D DIA.  
20 TH'DS PER INCH~R.H.  
.0005 MAX. LEAD ERROR  
PER IN. OF BALL TH'D  
CUMULATIVE  
ADJUST BALL NUTS TO  
WITHIN THE RANGE OF ZERO  
BACKLASH TO 10 LBS PRELOAD

1	HFRR-4	A0128
QTY / UNIT	MODEL USED ON	ASS'Y NO.
APPLICATION		
CODE		
<p><b>NOTICE TO PERSONS RECEIVING THIS DRAWING</b>          THE TECHNICAL MATERIEL CORPORATION claims proprietary right in the material disclosed hereon. This drawing is issued in confidence for engineering information only and may not be reproduced or used to manufacture anything shown hereon without permission from THE TECHNICAL MATERIEL CORPORATION to the user. This drawing is loaned for mutual assistance and is subject to recall at any time.</p>		

UNLESS OTHERWISE SPECIFIED DIMENSIONS ARE IN INCHES AND INCLUDE CHEMICALLY APPLIED OR PLATED FINISHES	
DECIMALS	FRACTIONS
.X ± .05	1/64
.XX ± .01	ANGLES
.XXX ± .005	0° -30'
TOLS.	
MATERIAL	
FINISH	

REQ'D	ITEM	PART NUMBER	DESCRIPTION	SYM.
LIST OF MATERIAL				
<p>FINAL APPROVAL <i>[Signature]</i> DATE 11-1-68</p> <p>MECH. DES. <i>[Signature]</i> DATE 10/30/68</p> <p>ELECT. DES. <i>[Signature]</i> DATE 8.21.68</p> <p>CHECKED <i>[Signature]</i> DATE 8.21.68</p> <p>DRAWN <i>[Signature]</i> DATE 8.21.68</p>				
<p>THE TECHNICAL MATERIEL CORP.          MAMARONECK, NEW YORK</p> <p>BALL SCREW, ASS'Y</p>				
S401-473 (M 305-11777)		SIZE B	CODE IDENT. NO. 82679	DWG NO. PO 320
SCALE ++		SHEET		OF A

REVISIONS						
ZONE	LTR	DESCRIPTION	DATE	E.M.N.NO	DRAFT	CHKD APPD
	X	EXP. RELEASE	8.21.68		HZ	JAD
	Ø	ORIG. RELEASE FOR PROD	11/4/68	Ø	R.G.	
	A	ADD. BMA 298 ASSY NO	7/16/69	-#	GE	WB
	B	ADDED 47DR +.093 HOLES	10/23/69	19626	KD	O.P.K.H.
	C	SCRIBE MARK ADD.	11/26/69	19664	KH	OP
	D	NOTE "SCRIBE LINE" REV. DIM. 421 RELOC.	12/22/69	19688	KH	OP



BALL TH'D DATA  
.312 PITCH DIA.  
10 TH'DS PER INCH ~ R.H.  
.0005 MAX. LEAD ERROR  
PER IN. OF BALL TH'D  
CUMULATIVE. .004 MAX. BACKLASH.

DIA. NOTED Δ TO BE CONCENTRIC  
TO BALL NUT PITCH DIA.  
WITHIN .001 T.I.R.

QTY / UNIT	MODEL USED ON	ASS'Y NO.
1	HFRR-4	BMA 298
APPLICATION		
CODE		

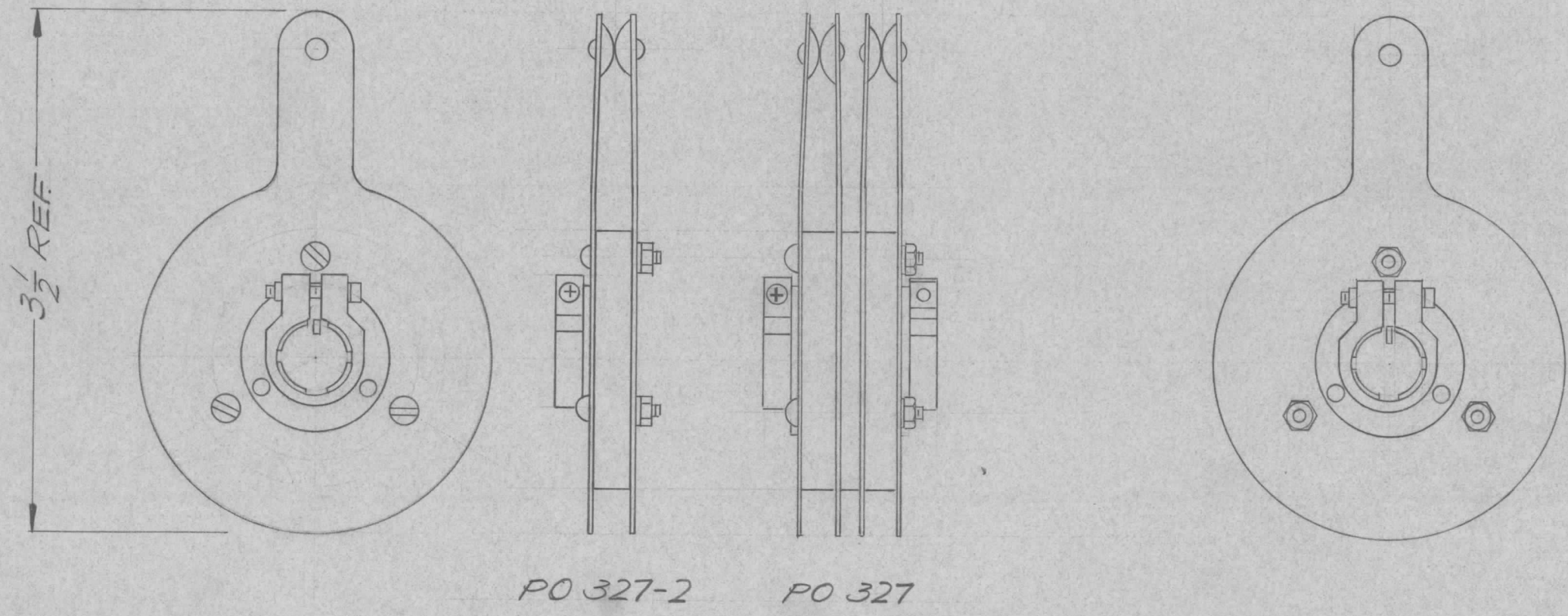
**NOTICE TO PERSONS RECEIVING THIS DRAWING**  
 THE TECHNICAL MATERIEL CORPORATION claims proprietary right in the material disclosed hereon. This drawing is issued in confidence for engineering information only and may not be reproduced or used to manufacture anything shown hereon without permission from THE TECHNICAL MATERIEL CORPORATION to the user. This drawing is loaned for mutual assistance and is subject to recall at any time.

DECIMALS	FRACTIONS
.X ± .05	1/64
.XX ± .01	TOLS. ANGLES
.XXX ± .005	0° - 30'

REQ'D	ITEM	PART NUMBER	DESCRIPTION	SYM.
LIST OF MATERIAL				
FINAL APPROVAL				
MECH. DES.				
ELECT. DES.				
CHECKED				
DRAWN				
MATERIAL				
FINISH				
5401-473 (M510-11778)			SIZE B	ISSUE D
			CODE IDENT. NO. 82679	
			DWG NO. PO 321	
SCALE			SHEET	OF

BALL SCREW, ASS'Y

REVISIONS						
ZONE	LTR	DESCRIPTION	DATE	E.M.N.NO	DRAFT	CHKD APPD
	Ø	ORIG RELEASE FOR PROD	3/25/71		CV	GE
	A	PO 327-2 ADDED	3/8/72	20556	GE	EP EP



SPECIFICATIONS

- 20,000 V PEAK FLASHOVER AT 60 CPS.
- 80 AMP CURRENT CARRYING CAPACITY.
- SILVER PLATED CONTACT BUTTONS & MEMBERS

PO 327 AS SHOWN  
 PO 327-2 ONE SET CONTACTS & CLAMP

1	MAT-5	BMA 477
1	BCT10K	AS 133
QTY / UNIT	MODEL USED ON	ASS'Y NO.

**APPLICATION**

CODE

**NOTICE TO PERSONS RECEIVING THIS DRAWING**  
 THE TECHNICAL MATERIEL CORPORATION claims proprietary right in the material disclosed hereon. This drawing is issued in confidence for engineering information only and may not be reproduced or used to manufacture anything shown hereon without permission from THE TECHNICAL MATERIEL CORPORATION to the user. This drawing is loaned for mutual assistance and is subject to recall at any time.

UNLESS OTHERWISE SPECIFIED DIMENSIONS ARE IN INCHES AND INCLUDE CHEMICALLY APPLIED OR PLATED FINISHES

DECIMALS	FRACTIONS	TOLS.
.X ± .05	1/64	
.XX ± .01	ANGLES	
.XXX ± .005	0° -30'	

MATERIAL

FINISH

REQ'D	ITEM	PART NUMBER	DESCRIPTION	SYM.		
<i>F. BUDETTI</i> LIST OF MATERIAL						
FINAL APPROVAL <i>[Signature]</i>		DATE	<b>THE TECHNICAL MATERIEL CORP.</b> MAMARONECK, NEW YORK			
MECH. DES. <i>[Signature]</i>		DATE				
ELECT. DES.		DATE				
CHECKED		DATE				
DRAWN <i>EVANGELIST</i>		DATE	<i>ROTOR</i>			
5401-113 (MODEL 90)		DATE	SIZE	CODE IDENT. NO.	DWG NO.	ISSUE
			B	82679	PO 327	A
SCALE 1:1			SHEET OF			

5

4

3

2

1

REVISIONS

ZONE	LTR	DESCRIPTION	DATE	E.M.N.NO	DRAFT	CHKD	APPD
	Ø	ORIG RELEASE FOR PROD	10/11/71		CV		

FIG. 1

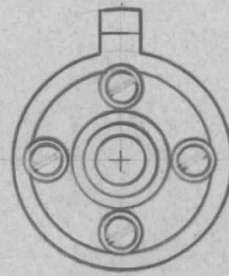


FIG. 2

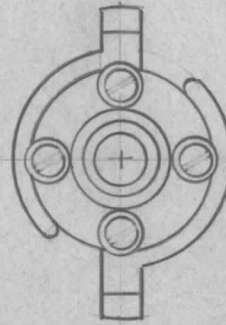


FIG. 3

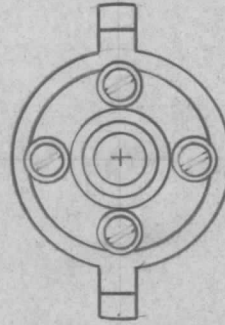
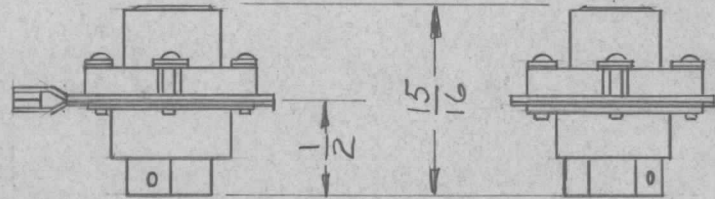
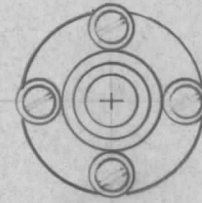
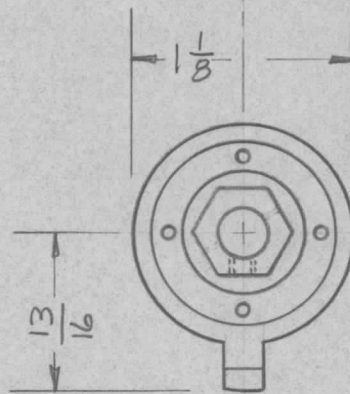


FIG. 4



DIMENSIONS FOR REF. ONLY



1 CIRCUIT ROTOR AVAILABLE  
2-11 POSITIONS.

PART NUMBER	FIG	CKT	POLE
PO 329-1	1	1	1
PO 329-2	2	2	2
PO 329-3	3	1	2

REF: WS106

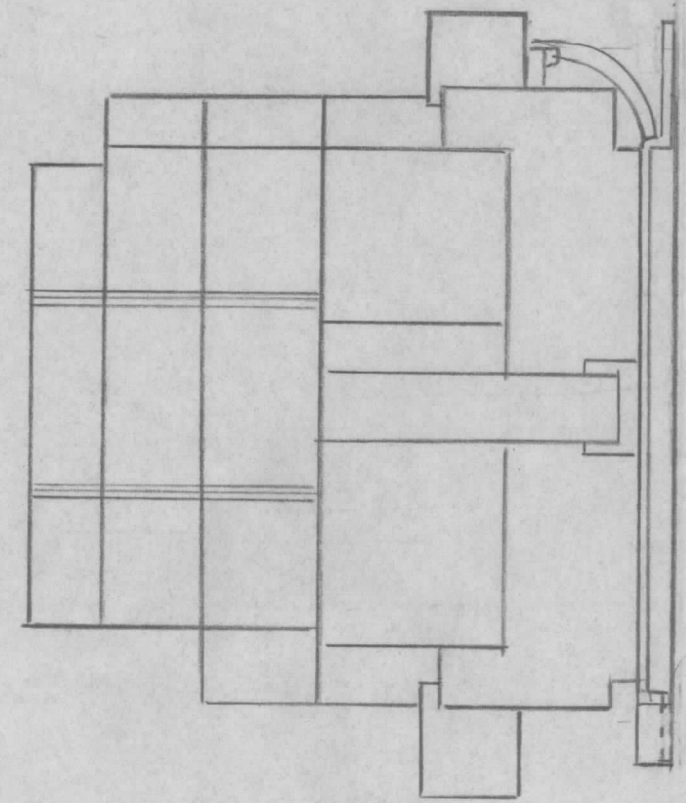
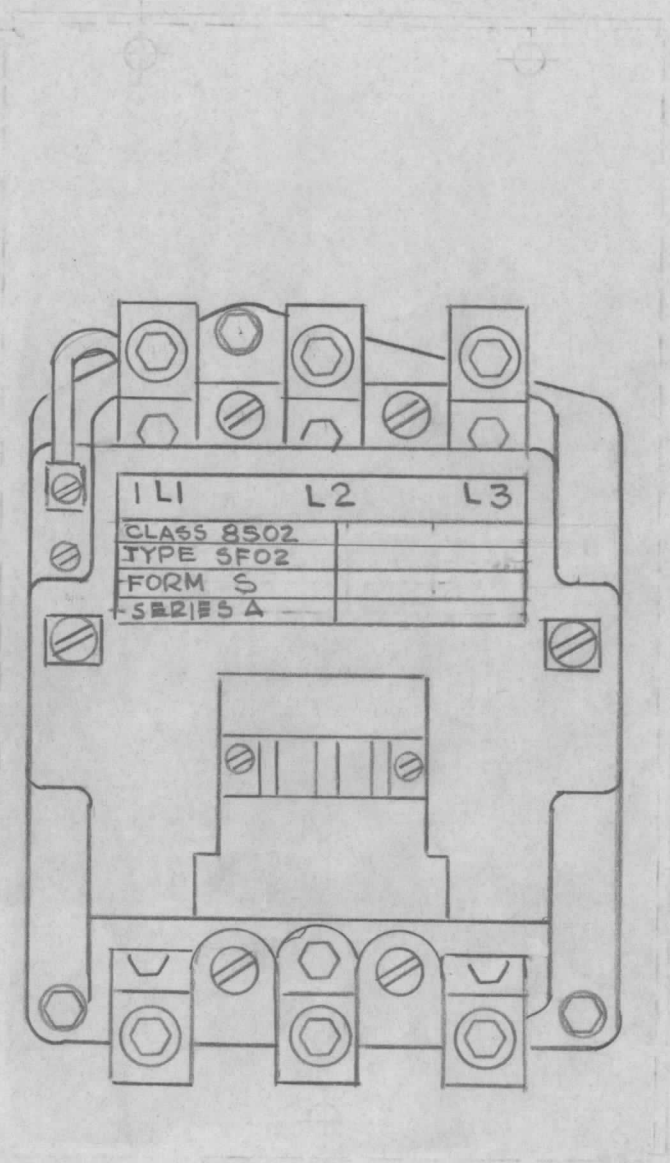
QTY / UNIT	MODEL USED ON	ASS'Y NO.
2	TFP-1K	
APPLICATION		
CODE		

NOTICE TO PERSONS RECEIVING THIS DRAWING  
THE TECHNICAL MATERIEL CORPORATION claims proprietary right in the material disclosed hereon. This drawing is issued in confidence for engineering information only and may not be reproduced or used to manufacture anything shown hereon without permission from THE TECHNICAL MATERIEL CORPORATION to the user. This drawing is loaned for mutual assistance and is subject to recall at any time.

REQ'D	ITEM	PART NUMBER	DESCRIPTION	SYM.
LIST OF MATERIAL				
THE TECHNICAL MATERIEL CORP. MAMARONECK, NEW YORK				
ROTOR, SW				
MATERIAL			SIZE	ISSUE
FINISH			B	Ø
			CODE IDENT. NO.	DWG NO.
			82679	PO 329
SCALE			SHEET OF	



					REVISIONS		
E.M.N. NO.	DRAFT	CHKD	ZONE	LTR	DESCRIPTION	DATE	APPROVED
	J.D.			Ø	ORIGINAL RELEASE FOR PRODUCTION	12-8-80	



ELECTRICAL SPECIFICATIONS

MAX WIRE SIZE: 0000  
 WEIGHT: 21 LBS. APPROX.  
 NEMA SIZE: 4  
 MAX H.P.: 50  
 POLES: 3  
 CONTACT VOLTAGE: 600 V MAX.  
 8 HOUR RATING: 150 AMPS FREE AIR  
 135 AMPS INCLOSED  
 COIL VOLTAGE: 220 ± 10%  
 COIL FREQ.: 50/60 HZ  
 ONE INTERLOCK SWITCH SPST MOUNTED  
 ON LEFT SIDE

REF: RL138-3

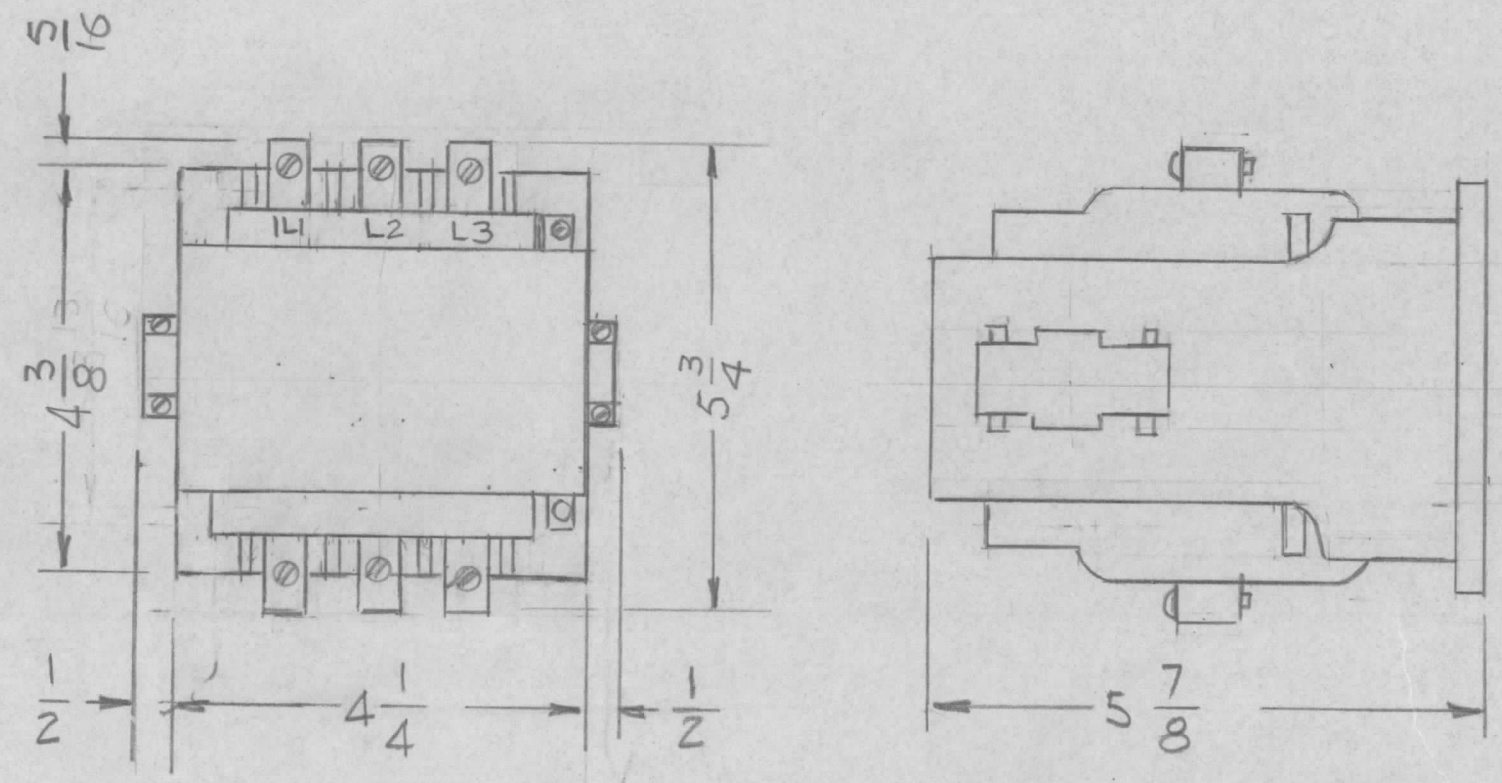
1	GPT-40K	A5784
QTY / UNIT	MODEL USED ON	ASS'Y NO.
APPLICATION		
	CODE	5401-85

**NOTICE TO PERSONS RECEIVING THIS DRAWING**  
 THE TECHNICAL MATERIEL CORPORATION claims proprietary right in the material disclosed hereon. This drawing is issued in confidence for engineering information only and may not be reproduced or used to manufacture anything shown hereon without permission from THE TECHNICAL MATERIEL CORPORATION to the user. This drawing is loaned for mutual assistance and is subject to recall at any time.

UNLESS OTHERWISE SPECIFIED DIMENSIONS ARE IN INCHES AND INCLUDE CHEMICALLY APPLIED OR PLATED FINISHES	
DECIMALS .X ± .05 .XX ± .01 .XXX ± .005	FRACTIONS 1/64 ANGLES 0° .30'
MATERIAL	
FINISH	

REQ'D	ITEM	PART NUMBER	DESCRIPTION	SYM.
LIST OF MATERIAL				
THE TECHNICAL MATERIEL CORP. MAMARONECK, NEW YORK				
RELAY, 3 POLE				
FINAL APPROVAL		DATE	SIZE B CODE IDENT. NO. 82679 DWG NO. P0339 ISSUE Ø	
MECH. DES.		DATE		
ELECT. DES.		DATE		
CHECKED		DATE		
DRAWN G.D.L.		DATE 12-8-80		
SCALE 1/2		SHEET		OF

REVISIONS							
E.M.N. NO.	DRAFT	CHKD	ZONE	LTR	DESCRIPTION	DATE	APPROVED
	GDL			Ø	ORIGINAL RELEASE	5-17-82	



ELECTRICAL SPECIFICATIONS

NEMA SIZE - 3  
 MAX H.P. - 50  
 3 PHASE RATING  
 CAT. NO. 200V 230V  
 - WARD LEONARD ELEC CO -  
 MFG. NO 500 3A 3001-21 WITH N.O. AND  
 N.C. (5M65) AUXILIARY MOUNTED ON THE  
 220V COIL 50/60 HZ

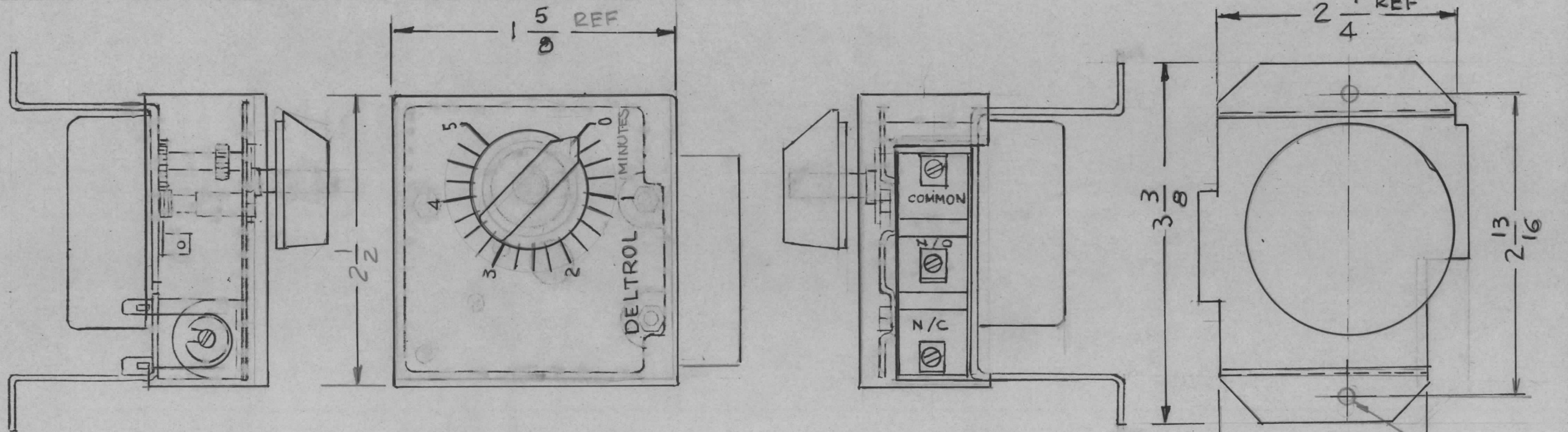
REF: RL 130-6

QTY / UNIT	MODEL USED ON	ASS'Y NO.	DECIMALS	FRACTIONS	TOLS.	ANGLES	REQ'D	ITEM	PART NUMBER	DESCRIPTION	SYM.
1	GPT-10K	A5792	.X ± .05	1/64							
APPLICATION			.XX ± .01				LIST OF MATERIAL				
CODE			.XXX ± .005		0° .30'		THE TECHNICAL MATERIEL CORP.				
MATERIAL			UNLESS OTHERWISE SPECIFIED DIMENSIONS ARE IN INCHES AND INCLUDE CHEMICALLY APPLIED OR PLATED FINISHES				MAMARONECK, NEW YORK				
FINISH							RELAY, 3 POLE				
NOTICE TO PERSONS RECEIVING THIS DRAWING			THE TECHNICAL MATERIEL CORPORATION claims proprietary right in the material disclosed hereon. This drawing is issued in confidence for engineering information only and may not be reproduced or used to manufacture anything shown hereon without permission from THE TECHNICAL MATERIEL CORPORATION to the user. This drawing is loaned for mutual assistance and is subject to recall at any time.				DRAWN G.D.L. DATE 10-1-81				
							SIZE	CODE IDENT. NO.	DWG NO.	ISSUE	
							B	82679	P0340	Ø	
							SCALE	1/2	SHEET	OF	

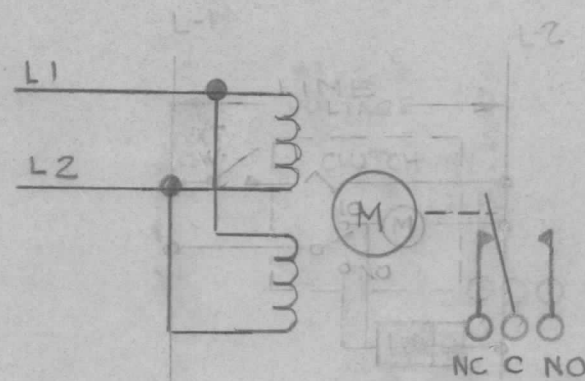
**MFG SPECIFICATIONS:**

MODEL: 601-126  
 MOTOR 240V 60Hz,  
 CLUTCH RATED 240VAC  
 SWITCH RATED 10A, 240VAC  
 TIME DELAY 5' MIN. (DELTROL DIV. DETROIT P/NO 46309-84)  
 TIME DELAY 60" SECONDS (DELTROL DIV. DETROIT P/NO 46308-84)

REVISIONS							
E.M.N. NO	DRAFT	CHKD	ZONE	LTR	DESCRIPTION	DATE	APPROVED
				Ø	ORIGINAL RELEASE	8-25-82	



TMC PART NO	MFG PART NO
PO 341-1	DELTROL 46309-84
PO 341-2	DELTROL 46308-84



**SCHEMATIC**

REQ'D	ITEM	PART NUMBER	DESCRIPTION	SYM.
LIST OF MATERIAL				
THE TECHNICAL MATERIEL CORP. MAMARONECK, NEW YORK				
TIMER ADJUSTABLE				
SIZE	CODE IDENT. NO.	DWG NO.	ISSUE	
B	82679	PO 341-	Ø	

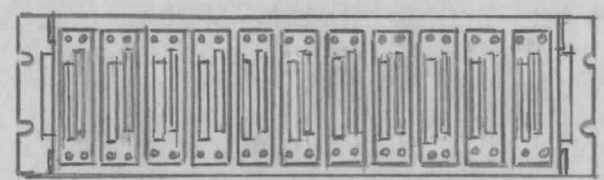
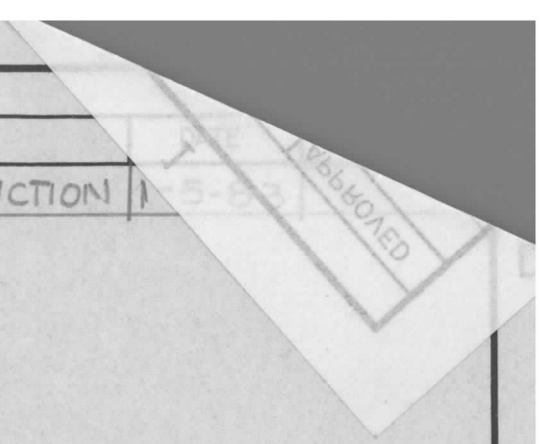
QTY / UNIT	MODEL USED ON	ASS'Y NO.
1	GPT-10K	
APPLICATION		
	CODE	

**NOTICE TO PERSONS RECEIVING THIS DRAWING**  
 THE TECHNICAL MATERIEL CORPORATION claims proprietary right in the material disclosed hereon. This drawing is issued in confidence for engineering information only and may not be reproduced or used to manufacture anything shown hereon without permission from THE TECHNICAL MATERIEL CORPORATION to the user. This drawing is loaned for technical assistance and is subject to recall at any time.

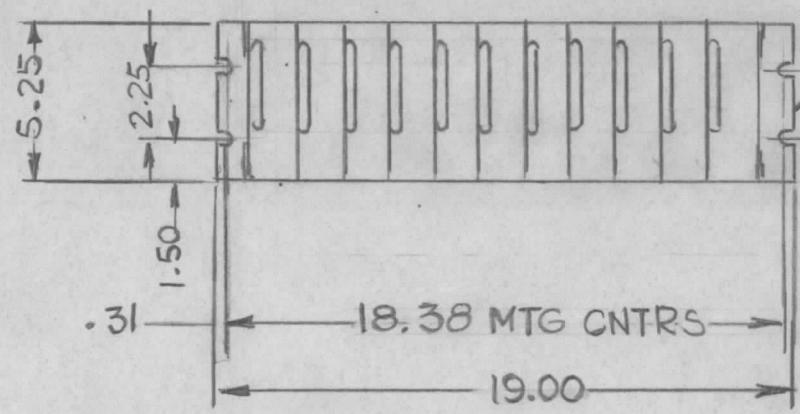
DECIMALS	FRACTIONS	ANGLES
.X ± .05	1/64	0° - 30'
.XX ± .01	TOLS.	
.XXX ± .005		

UNLESS OTHERWISE SPECIFIED DIMENSIONS ARE IN INCHES AND INCLUDE CHEMICALLY APPLIED OR PLATED FINISHES	FINAL APPROVAL	DATE
	G.D.L.	3-4-82

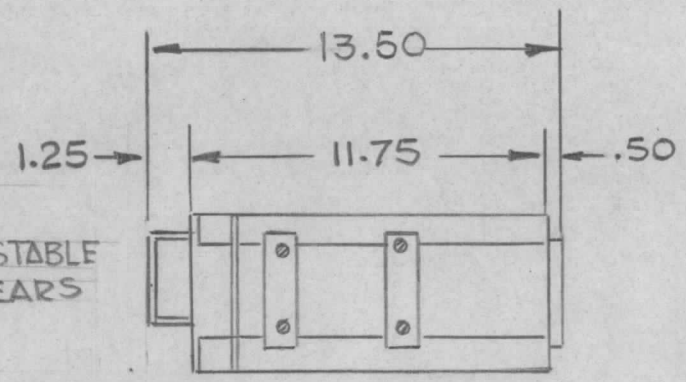
REVISIONS					
E.M.N. NO.	DRAFT	CHKD	ZONE	LTR	DESCRIPTION
	GDL			Ø	ORIG. RELEASE FOR PRODUCTION



REAR VIEW  
(SHOWN WITH TERM. BLOCK  
IN PLACE)



FRONT VIEW  
(SHOWN WITH MODULES  
IN PLACE)



ADJUSTABLE  
MTG EARS

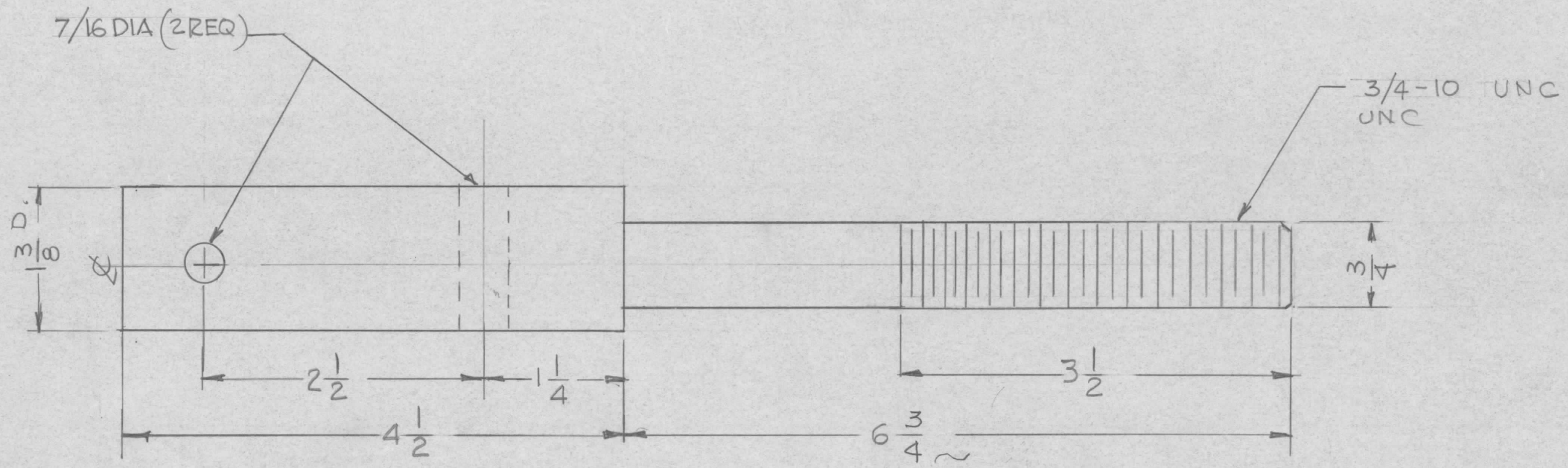
REF: MFG. DWG DX-II FRAME 20382  
(DAQ ELECTRONICS)

REQ'D	ITEM	PART NUMBER	DESCRIPTION	SYM.
	ENG. S. DE MARCO LIST OF MATERIAL			
	THE TECHNICAL MATERIEL CORP. MAMARONECK, NEW YORK			
	CHASSIS ASS'Y			
SIZE	CODE IDENT. NO.	DWG NO.	ISSUE	
B	82679	PO 343	Ø	
SCALE	SHEET		OF	

QTY / UNIT	MODEL USED ON	ASS'Y NO.	APPLICATION	MATERIAL	FINISH
1	AX5257	RCST-2			
1	AX5254	RCST-2			
APPLICATION			MATERIAL		
CODE			FINISH		

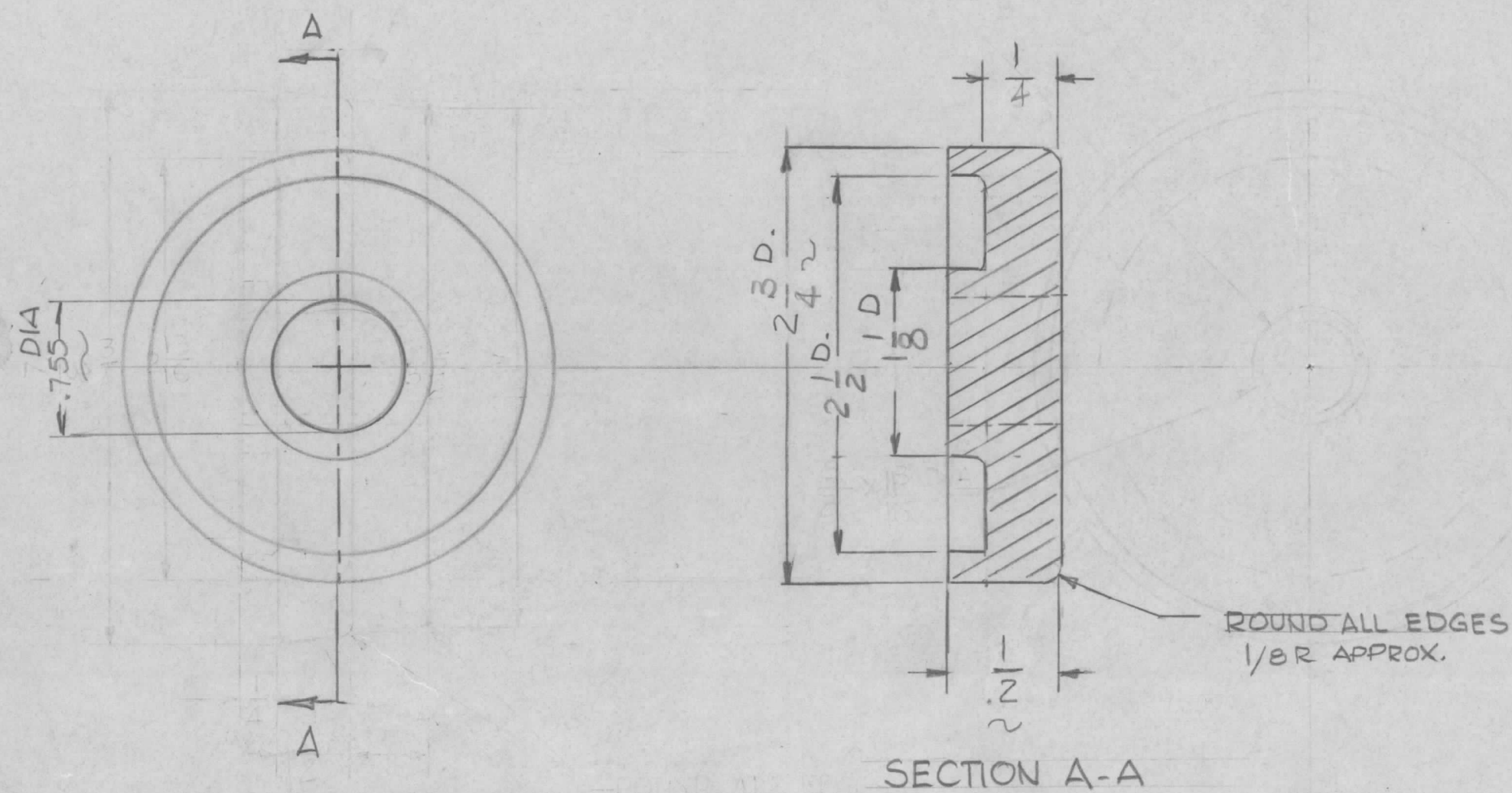
**NOTICE TO PERSONS RECEIVING THIS DRAWING**  
THE TECHNICAL MATERIEL CORPORATION claims proprietary right in the material disclosed hereon. This drawing is issued in confidence for engineering information only and may not be reproduced or used to manufacture anything shown hereon without permission from THE TECHNICAL MATERIEL CORPORATION to the user. This drawing is loaned for mutual assistance and is subject to recall at any time.

REVISIONS							
E.M.N. NO.	DRAFT	CHKD	ZONE	LTR	DESCRIPTION	DATE	APPROVED
	GDL			Ø	ORIGINAL RELEASE	1-3-90	



QTY / UNIT	MODEL USED ON	ASS'Y NO.	REQ'D	ITEM	PART NUMBER	DESCRIPTION	SYM.
LIST OF MATERIAL							
AA104 APPLICATION			UNLESS OTHERWISE SPECIFIED DIMENSIONS ARE IN INCHES AND INCLUDE CHEMICALLY APPLIED OR PLATED FINISHES		FINAL APPROVAL G.B.		DATE 1/15/90
			DECIMALS .X ± .05 .XX ± .01 .XXX ± .005		FRACTIONS 1/64 ANGLES 0° -30'		MECH. DES. DATE
CODE NOTICE TO PERSONS RECEIVING THIS DRAWING THE TECHNICAL MATERIEL CORPORATION claims proprietary right in the material disclosed hereon. This drawing is issued in confidence for engineering information only and may not be reproduced or used to manufacture anything shown hereon without permission from THE TECHNICAL MATERIEL CORPORATION to the user. This drawing is loaned for mutual assistance and is subject to recall at any time.			MATERIAL 1 3/8 OD S. STEEL (304)		ELECT. DES. DATE		THE TECHNICAL MATERIEL CORP. MAMARONECK, NEW YORK POST, ANTENNA (35' FT)
			FINISH NICKEL PLATE		CHECKED DATE		
			SIZE B		CODE IDENT. NO. 82679		DWG NO. PO 349
			SCALE 1:1		SHEET OF		ISSUE Ø

REVISIONS							
E.M.N. NO.	DRAFT	CHKD	ZONE	LTR	DESCRIPTION	DATE	APPROVED
	G.D.L.			Ø	ORIGINAL RELEASE FOR PROD.	1-3-90	
	G.D.L.			A	MATERIAL WAS COLD ROLL STEEL DIMENSIONS .755, 2 3/4, 3/4 & 1/4 WERE CHANGED	4-25-90	<i>[Signature]</i>



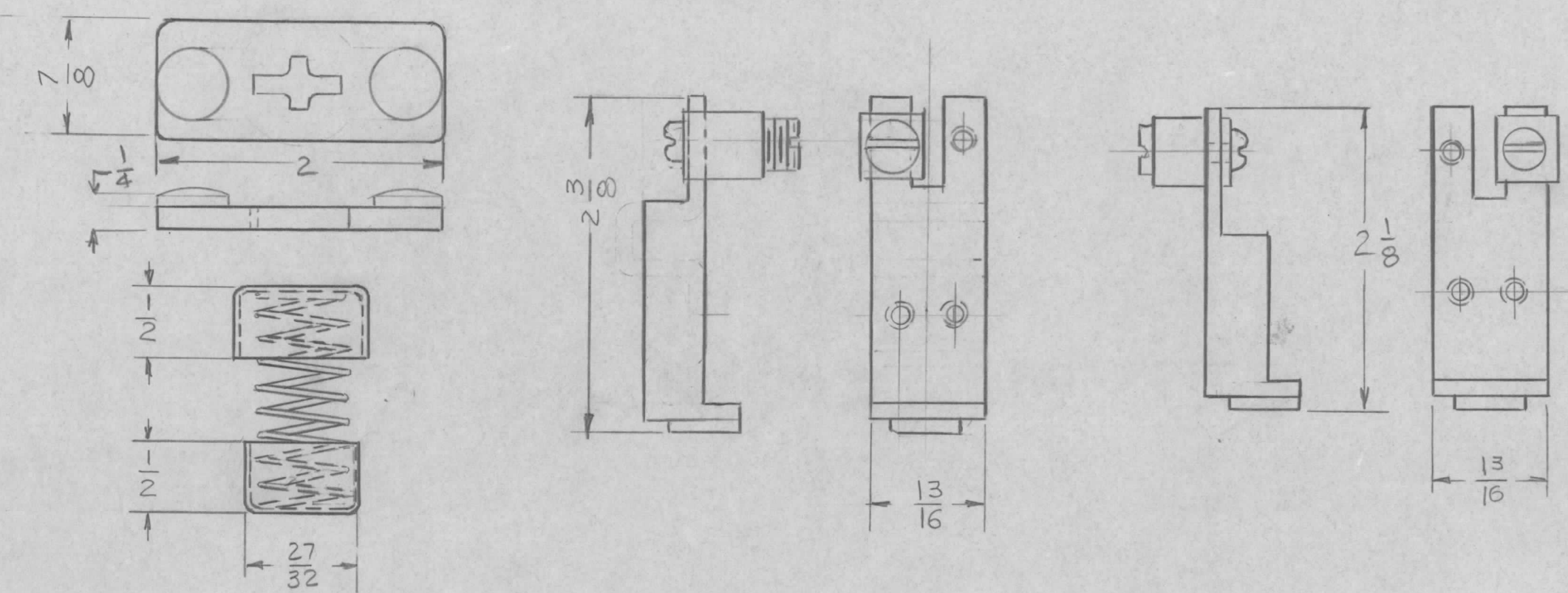
SECTION A-A

REQ'D	ITEM	PART NUMBER	DESCRIPTION	SYM.
LIST OF MATERIAL				
FINAL APPROVAL <i>[Signature]</i>			DATE 4/15/90	<b>THE TECHNICAL MATERIEL CORP.</b> MAMARONECK, NEW YORK  <b>TOP &amp; BOTTOM INSULATOR</b>
MECH. DES.			DATE	
ELECT. DES.			DATE	
CHECKED			DATE	
DRAWN G.D.L.			DATE 8-25-88	
SIZE	CODE IDENT. NO.	DWG NO.	ISSUE	
B	82679	PO 350	A	
SCALE 1:1		SHEET OF		

2	AA104	AB106
QTY / UNIT	MODEL USED ON	ASS'Y NO.
APPLICATION		
CODE		
<small>NOTICE TO PERSONS RECEIVING THIS DRAWING</small> THE TECHNICAL MATERIEL CORPORATION claims proprietary right in the material disclosed hereon. This drawing is issued in confidence for engineering information only and may not be reproduced or used to manufacture anything shown hereon without permission from THE TECHNICAL MATERIEL CORPORATION to the user. This drawing is loaned for mutual assistance and is subject to recall at any time.		

UNLESS OTHERWISE SPECIFIED DIMENSIONS ARE IN INCHES AND INCLUDE CHEMICALLY APPLIED OR PLATED FINISHES	
DECIMALS .X ± .05 .XX ± .01 .XXX ± .005	FRACTIONS 1/64 ANGLES 0° -30'
MATERIAL STAINLESS STEEL	
FINISH NICKEL PLATE	

REVISIONS							
E.M.N. NO.	DRAFT	CHKD	ZONE	LTR	DESCRIPTION	DATE	APPROVED
	G-DL			Ø	ORIG. RELEASE FOR PRODUCTION	8-15-91	



MOVABLE CONTACT ASSY 1 EACH  
 LINE CONTACT 1 EACH  
 LOAD CONTACT 1 EACH

ORIGINAL PARTS FOR PO 183  
 NOT AVAILABLE DIRECTLY  
 REPLACE BY THESE PARTS

REF: PM1620

QTY / UNIT	MODEL USED ON	ASS'Y NO.
APPLICATION		
CODE		

**NOTICE TO PERSONS RECEIVING THIS DRAWING**  
 THE TECHNICAL MATERIEL CORPORATION claims proprietary right in the material disclosed hereon. This drawing is issued in confidence for engineering information only and may not be reproduced or used to manufacture anything shown hereon without permission from THE TECHNICAL MATERIEL CORPORATION to the user. This drawing is loaned for mutual assistance and is subject to recall at any time.

UNLESS OTHERWISE SPECIFIED DIMENSIONS ARE IN INCHES AND INCLUDE CHEMICALLY APPLIED OR PLATED FINISHES	
DECIMALS .X ± .05 .XX ± .01 .XXX ± .005	FRACTIONS 1/64 ANGLES 0° -30'
MATERIAL	
FINISH	

REQ'D	ITEM	PART NUMBER	DESCRIPTION	SYM.
LIST OF MATERIAL				
FINAL APPROVAL <i>JB</i> DATE 8/15/91				
MECH. DES. DATE				
ELECT. DES. DATE				
CHECKED DATE				
DRAWN G.D.L. DATE 8-15-91				
SIZE	CODE IDENT. NO.	DWG NO.	ISSUE	
B	82679	PO-355	Ø	
SCALE	SHEET			OF

THE TECHNICAL MATERIEL CORP.  
 MAMARONECK, NEW YORK

RL-130 CONTACT  
 (SINGLE)