

THE CONTENTS OF THIS DRAWING ARE THE EXCLUSIVE PROPERTY OF THE TECHNICAL MATERIEL CORP. ITS UNAUTHORIZED USE OR REPRODUCTION IN WHOLE OR IN PART IS STRICTLY FORBIDDEN.

REQ. PER UNIT

MODEL

USED ON

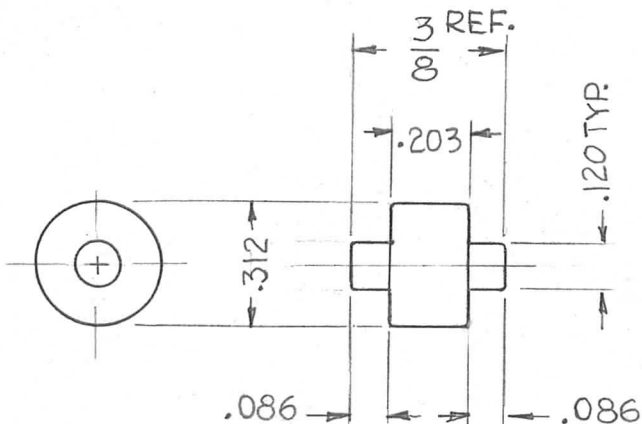
ASS'Y. NO.

DATE

PO-243

#FR-1

7-26-62



REF: RADIO SWITCH CORPORATION (S-13387)

REQ.	ITEM	PART NO.	DESCRIPTION	SYMBOL							
			KRUY								
			THE TECHNICAL MATERIEL CORP.								
			MAMARONECK, NEW YORK								
			STAINLESS STEEL	ROLLER, DETENT							
			MATERIAL								
SYM	DESCRIPTION	DATE	CH. NO.	DRAFTS	CHECKER	ENG. APP.	#303	G.D.L.	HDe	BP	
UNLESS OTHERWISE SPECIFIED:		SCALE: DO NOT SCALE									
DIMENSIONS ARE IN INCHES		MAXIMUM ALLOWABLE TOLERANCES HAVE BEEN DETERMINED AND ANY DEVIATIONS WILL BE CAUSE FOR REJECTION.									
TOLERANCES ON		REMOVE ALL BURRS AND SHARP EDGES						5104 PASSIVATE		TAK	
FRAC. ± 1/64 DEC. ± .005 ANGLES ± 1/2°								FINISH & SPEC. NO.	ELEC. DES. APP.	MECH. DES. APP.	PO-243