

THE CONTENTS OF THIS DRAWING ARE THE EXCLUSIVE PROPERTY OF THE TECHNICAL MATERIEL CORP. ITS UNAUTHORIZED USE OR REPRODUCTION IN WHOLE OR IN PART IS STRICTLY FORBIDDEN.

REQ. PER UNIT

USED ON

MODEL

ASS'Y. NO.

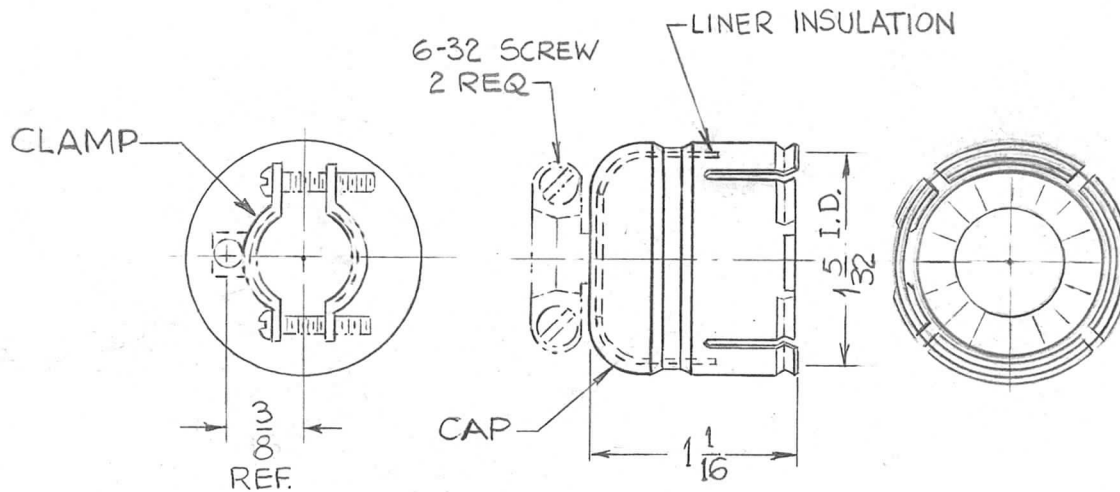
DATE

6-27-62

PO-236



TMC PART NO.	MFG. PART NO.	TYPE
PO-236-1	# 3-24	W/CLAMP
PO-236-2	# 3-10	W/O CLAMP



DIMENSIONS FOR REFERENCE

NOTE:- TO BE COMPLETELY ASSEMBLED BY MANUFACTURER

REQ.	ITEM	PART NO.	STRUMER DESCRIPTION	SYMBOL					
		///	THE TECHNICAL MATERIEL CORP. MAMARONECK, NEW YORK						
		///	CAP, PLUG						
Ø	ORIGINAL RELEASE	9/26/69	Ⓢ						
SYM	DESCRIPTION	DATE	CH. NO.	DRAFTS	CHECKER	ENG. APP.			
UNLESS OTHERWISE SPECIFIED:		SCALE: 5401-71		V.R.R.		J.We		SJM 9/26/69	
DIMENSIONS ARE IN INCHES		MAXIMUM ALLOWABLE TOLERANCES HAVE BEEN DETERMINED AND ANY DEVIATIONS WILL BE CAUSE FOR REJECTION.		TYPE & TEMPER		HEATTREAT. SPEC.		DRAWN	
TOLERANCES ON		REMOVE ALL BURRS AND SHARP EDGES		BLACK JAPPANED				CHECKED	
FRAC. ± 1/64 DEC. ± .005 ANGLES ± 1/2°				FINISH & SPEC. NO.		ELEC. DES. APP.		MECH. DES. APP.	
								PO-236	
								Ø	