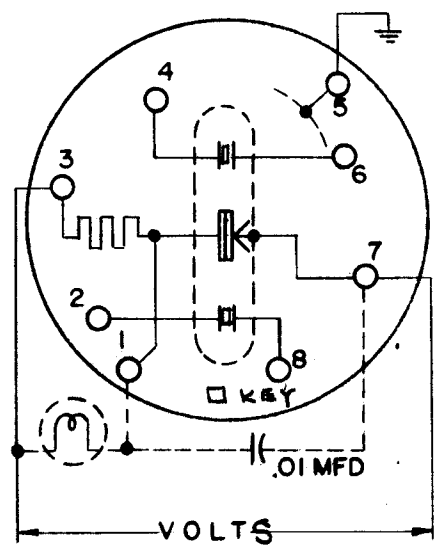
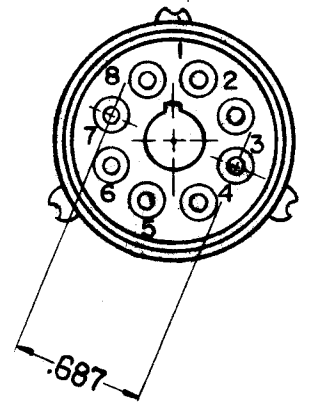
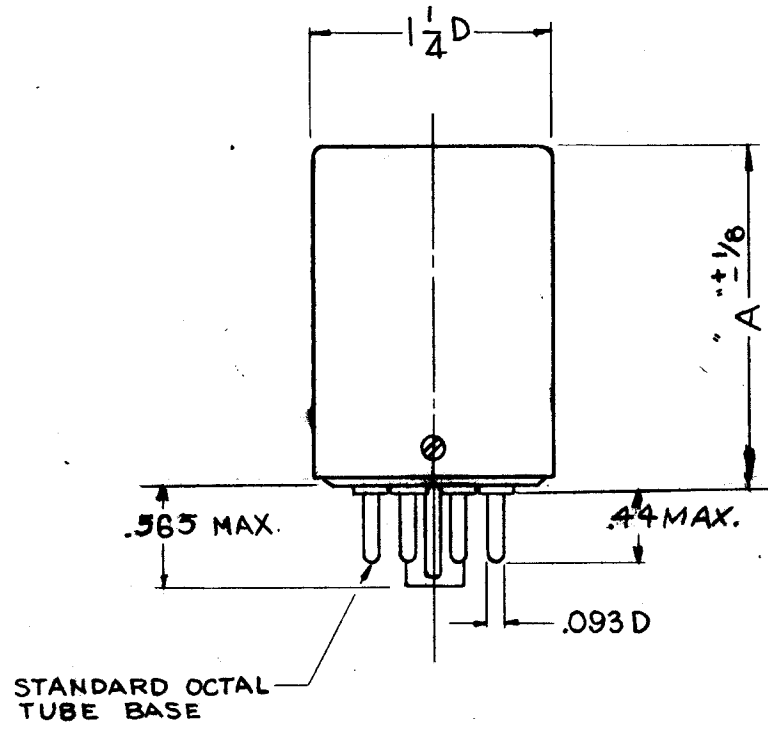


PO 158

STANDARD DRAWING

ACCOMMODATES HOLDER TYPE	TMC NO	DIM. A	HEATER RATING		STABILITY	
			VOLTS	WATTS	CONDITION A	CONDITION B
HC-6/U	PO 158-1	1-11/16	6.3	7.5	±1°C	±2°C
HC-6/U	PO 158-2	1-11/16	26.7	7.5	±1°C	±2°C
HC-6/U	PO 158-3	1-11/16	12.0	7.5	±1°C	±2°C
HC-13/U	PO 158-4	2-11/32	6.3	10.0	±1°C	±2°C



OPERATING CONDITIONS	
CONDITION	AMBIENT TEMPERATURE RANGE
A	+ 10°C TO + 60°C
B	- 55°C TO + 70°C

WARM UP TIME ~ 6 MINUTES (CONDITION A)
 15 MINUTES (CONDITION B)
 NOMINAL TEMP. ~ + 75°C ± 2°C
 ACCOMODATES ~ TWO MILTYPE HC-6/U
 OR HC-13/U HOLDERS
 AS PER CHART.

NOTICE TO PERSONS RECEIVING THIS DRAWING

THE TECHNICAL MATERIEL CORPORATION claims proprietary right in the material disclosed hereon. This drawing is issued in confidence for engineering information only and may not be reproduced or used to manufacture anything shown hereon without permission from THE TECHNICAL MATERIEL CORPORATION to the user. This drawing is loaned for mutual assistance and is subject to recall at any time.

Property of:
 THE TECHNICAL MATERIEL CORPORATION
 MAMARONECK, NEW YORK

ISSUE	ITEM	CHANGED FROM	DATE	CH. NO.	DRAFTS	CHECKER	ENG. APP.
C		DIM. LINES FOR "A" & .565 RELOCATED	3/24/66	16009	GDC	[Signature]	[Signature]
B		MFG. CO. DELETED 5401 Nos. ADDED 44 WAS 437	12/1/65	15290	H.V.	[Signature]	[Signature]
A		ACCOMMODATES HOLDER TYPE ADDED	6-22-65	14240	DVV	[Signature]	[Signature]

5401-77 (TCO-14)
 5401-129 (BG-100)

FOR PURCHASING ONLY

REQ. PER UNIT	MODEL	ASSY. NO.	DATE
1	RTF-2		10-20-58
USED ON			

REQ. ITEM	PART NO.	DESCRIPTION	SYMBOL
		THE TECHNICAL MATERIEL CORP. MAMARONECK, NEW YORK	
		OVEN, CRYSTAL	
		J.C. BIELE	[Signature]
		DRAWN	CHECKED
		FINAL APPROVAL	[Signature]
		PO 158	C