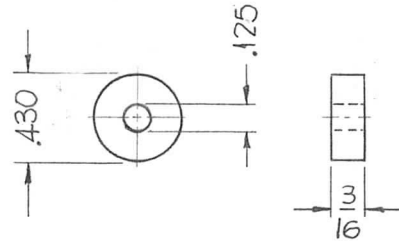


REQ. PER UNIT	USED ON			PM-988 Ø
	MODEL	ASS'Y. NO.	DATE	
10	GPT-200K (AX-395)	A-3255	8-13-63	



NOTE:
ROUND ALL EDGES

REQ.	ITEM	PART NO.	F. BUDETTI	DESCRIPTION	SYMBOL					
		AS NOTED	THE TECHNICAL MATERIEL CORP. MAMARONECK, NEW YORK							
		STAINLESS STEEL	STOP, WIRE ROPE							
○	ORIGINAL RELEASE FOR PRODUCTION	3-1-64								
SYM	DESCRIPTION	DATE	CH. NO.	DRAFTS	CHECKER	ENG. APP.	MATERIAL			
UNLESS OTHERWISE SPECIFIED DIMENSIONS ARE IN INCHES AND INCLUDE CHEMICALLY APPLIED OR PLATED FINISHES		SCALE	1" = 1"			303		SRG	aaqpb	RE 3-30-64
DECIMALS .X ± .05 .XX ± .01 .XXX ± .005	TOLERANCES	FRACTIONS ± 1/64 ANGLES ± 0° 30'	CODE	A			S104 - PASSIVATE	9B 2B	me/ep	PM-988 Ø
							FINISH & SPEC. NO.	ELEC. DES. APP.	MECH. DES. APP.	