

THE CONTENTS OF THIS DRAWING ARE THE EXCLUSIVE PROPERTY OF THE TECHNICAL MATERIEL CORP. ITS UNAUTHORIZED USE FOR REPRODUCTION IN WHOLE OR IN PART IS STRICTLY FORBIDDEN.

REQ. PER UNIT

3

USED ON

MODEL

GPT-200K (AX-395)

ASS'Y. NO.

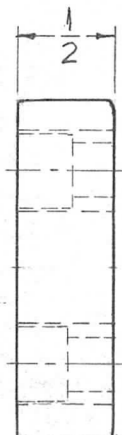
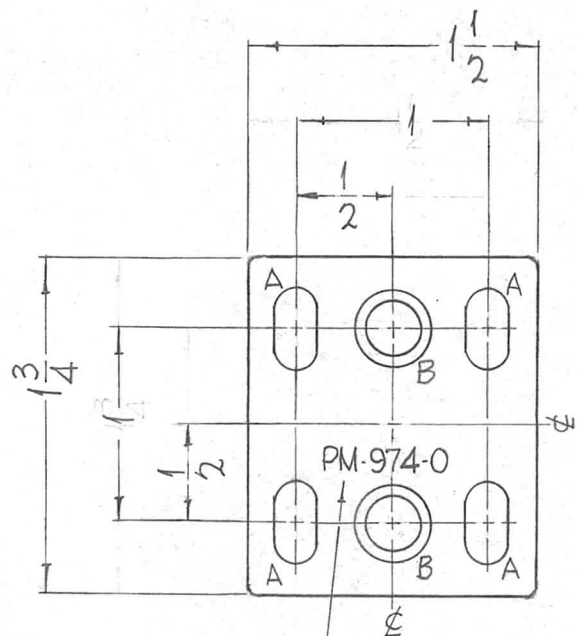
A-3194

DATE

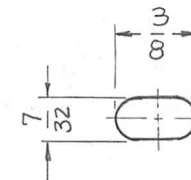
8-6-63

PM-974

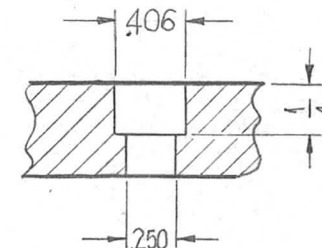
0



1/16 R
TYP
8 PLACES



DETAIL-A
(4 REQ.)



DETAIL-B
(2 REQ.)

METAL STAMP TMC PART NO. 1/8
HIGH GOTHIC

REQ.	ITEM	PART NO.	F. BUDETTI	DESCRIPTION	SYMBOL
		1/2 THICK		THE TECHNICAL MATERIEL CORP. MAMARONECK, NEW YORK	STAND, BASE
		STOCK SIZE			
		ALUMINUM			
		MATERIAL			
		2024-T4	SRG	QA900 RJC 3-30-64	
		TYPE & TEMPER	DRAWN	CHECKED	FINAL APPROVAL
		5404 YELLOW IRIDITE	QA900 RJC	QA900 RJC	PM-974
		FINISH & SPEC. NO.	ELEC. DES. APP.	MECH. DES. APP.	

SYM	DESCRIPTION	DATE	CH. NO.	DRAFTS	CHECKER	ENG. APP.
0	ORIGINAL RELEASE FOR PRODUCTION					

DECIMALS	TOLERANCES	FRACTIONS	CODE
.X ± .05		± 1/64	A
.XX ± .01		ANGLES	
.XXX ± .005		± 0° 30'	

UNLESS OTHERWISE SPECIFIED	SCALE
DIMENSIONS ARE IN INCHES AND INCLUDE CHEMICALLY APPLIED OR PLATED FINISHES	1" = 1"