

PM-973 0

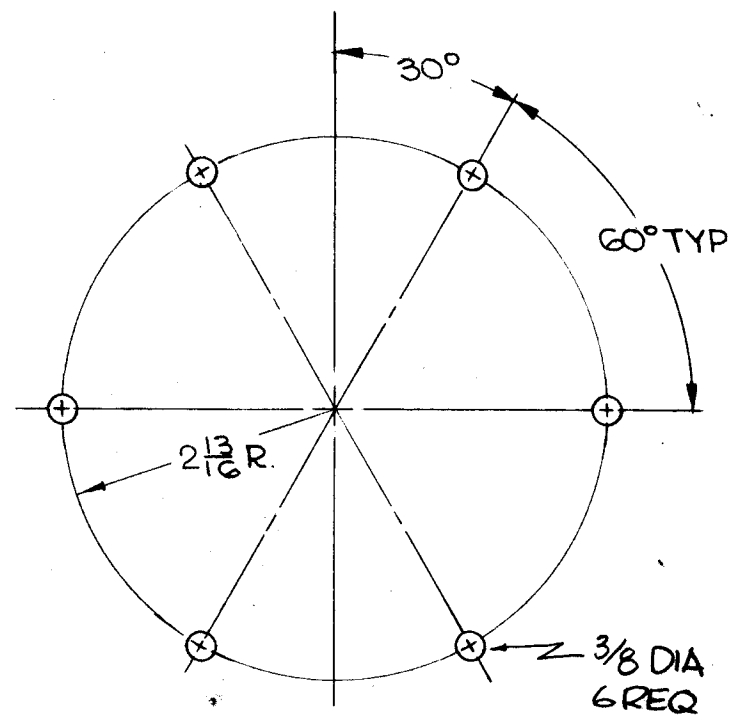
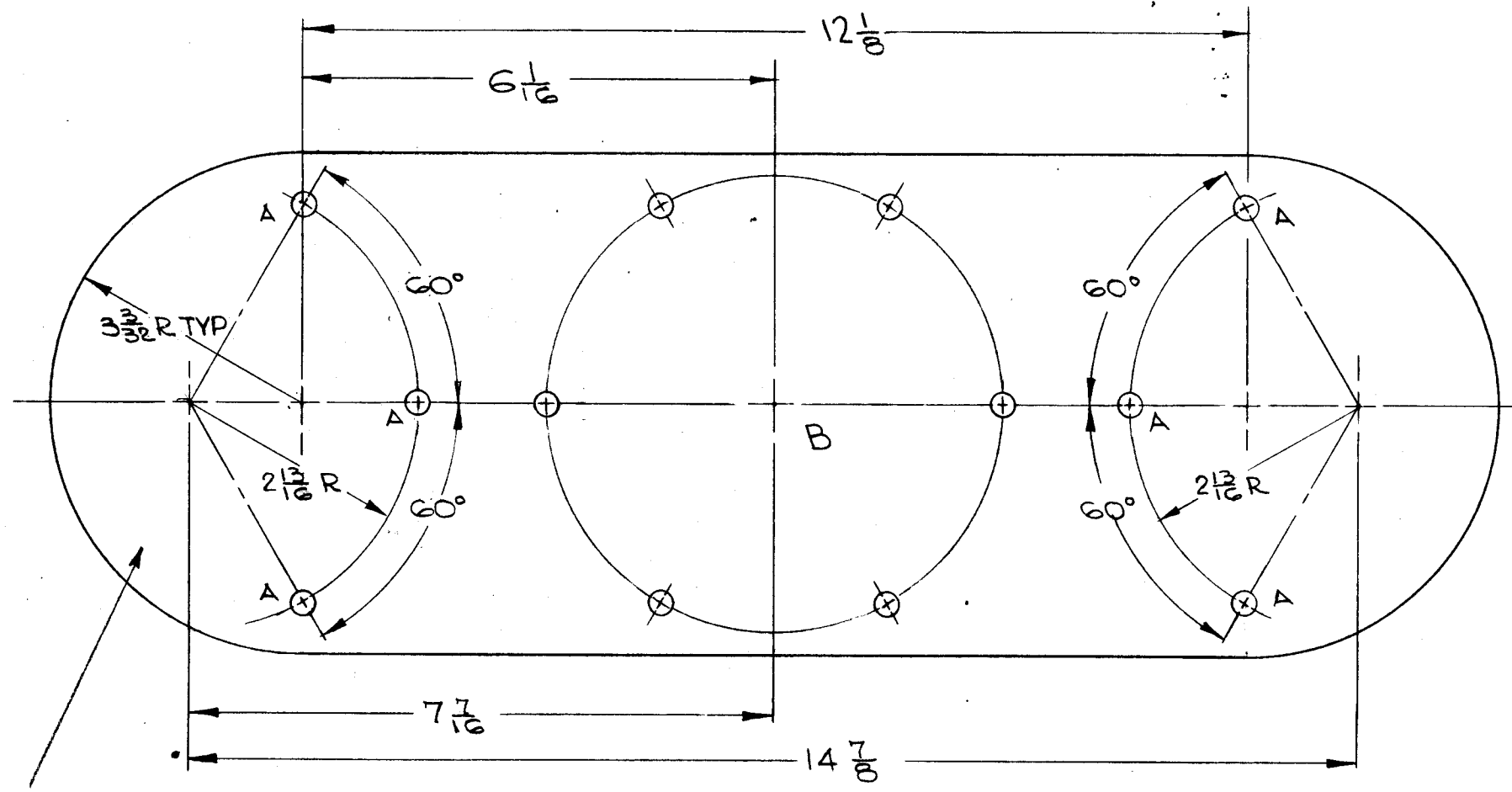
THE CONTENTS OF THIS DRAWING ARE THE EXCLUSIVE PROPERTY OF THE TECHNICAL MATERIEL CORP. ITS UNAUTHORIZED USE OR REPRODUCTION IN WHOLE OR IN PART IS STRICTLY FORBIDDEN.

ROUND ALL EDGES

HOLE

A - 3/8 DIA

6 REQ



"B" DETAIL - 1 REQ

METAL STAMP TMC PART NO. 1/8 HIGH GOTHIC.

~ NOTE ~  
POLISH BEFORE PLATING

0	ORIGINAL RELEASE FOR PRODUCTION	3/23/64				
SYM	DESCRIPTION	DATE	CH. NO.	DRAFTS	CHECKER	ENG. APP.
	UNLESS OTHERWISE SPECIFIED:	A	SCALE: 1:2			
	DIMENSIONS ARE IN INCHES		MAXIMUM ALLOWABLE TOLERANCES HAVE BEEN DETERMINED AND ANY DEVIATIONS WILL BE CAUSE FOR REJECTION.			
	TOLERANCES ON FRACTIONS ± 1/64		REMOVE ALL BURRS AND SHARP EDGES			
	DECIMALS ± .005					
	ANGLES ± 1/2°					

1	GPT-200K	AX-395	A-2823	8-29-63
REQ. PER UNIT	MODEL	SECTION	ASS'Y. NO.	DATE

USED ON

REQ.	ITEM	PART NO.	F. BUDETTI	DESCRIPTION	SYMBOL
		1/8 THICK		THE TECHNICAL MATERIEL CORP.	
		STOCK SIZE		MAMARONECK, NEW YORK	
		ALUMINUM		PLATE, CAPACITOR	
		MATERIAL		INTERCONNECT	
		5052-H32		<i>2/29/63</i> <i>aa gmk</i> <i>3/13/64</i>	
		TYPE & TEMPER		DRAWN	CHECKED
		HEAT TREAT. SPEC.			FINAL APPROVAL
		S245-SILVER PLATE .0003		<i>LB</i>	
		FINISH & SPEC. NO.		ELEC. DES. APP.	MECH. DES. APP.
					PM-973 0