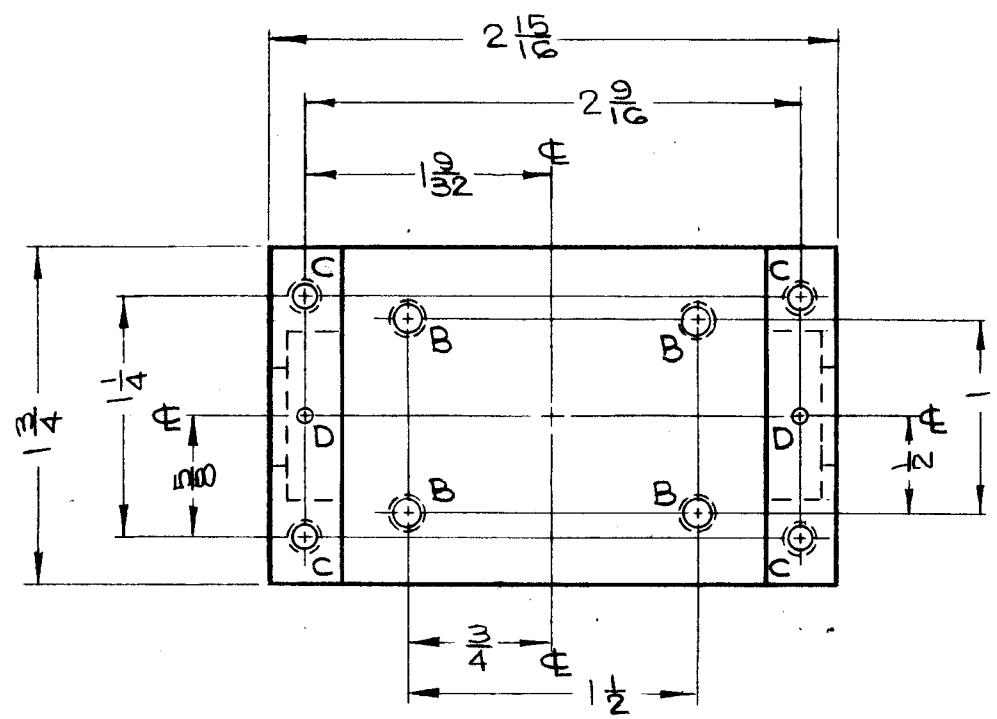


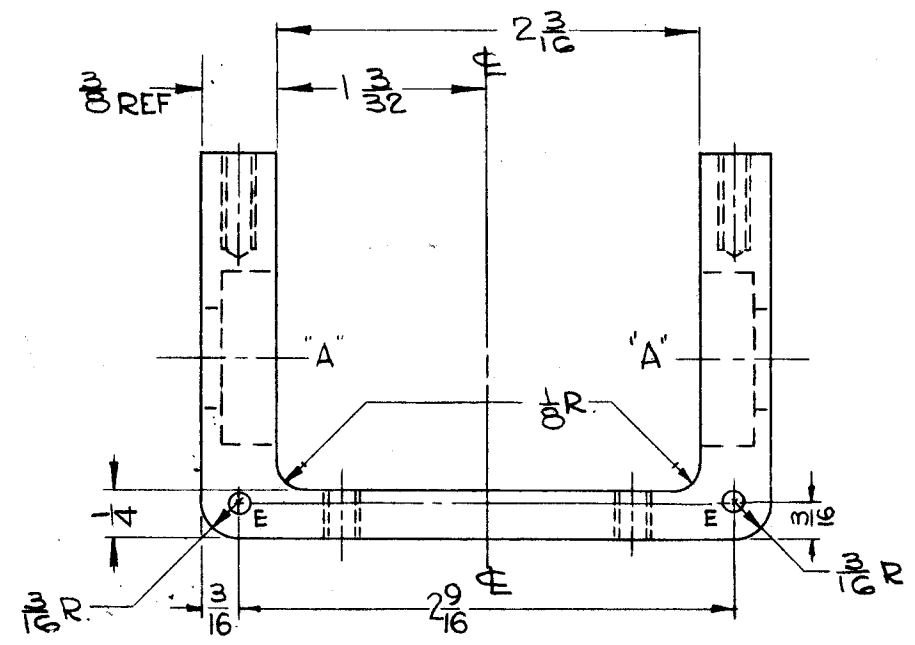
PM-962 0

THE CONTENTS OF THIS DRAWING ARE THE EXCLUSIVE PROPERTY OF THE TECHNICAL MATERIEL CORP. ITS UNAUTHORIZED USE OR REPRODUCTION IN WHOLE OR IN PART IS STRICTLY FORBIDDEN.

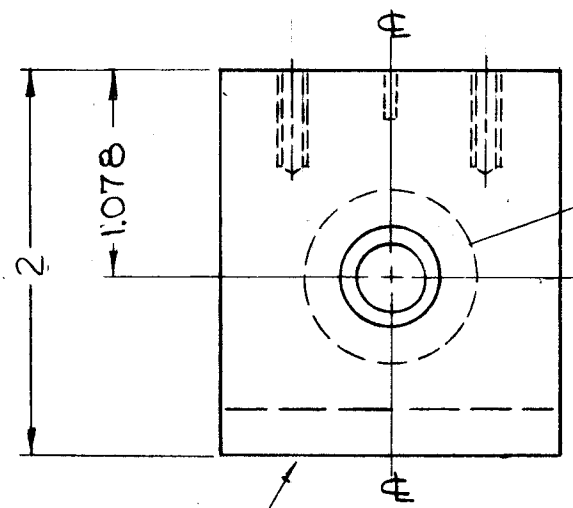


LEGEND		
HOLE	DESCRIPTION	REQ
A	1/2 DIA. THRU, C'BORE .875 <sup>+0.000</sup> / <sub>-.001</sub> DIA. x .281 DEEP	2
B	DRILL & TAP 10-32 THRU	4
C	DRILL & TAP 8-32 x 1/2 DEEP	4
D	.093 DIA. x 1/4 DEEP (SEE NOTE*)	2
E	.089 DIA. x 3/16 DEEP	4

~NOTE \*  
DRILL & PIN UPON ASSEMBLY



OPPOSITE SIDE SAME



① BEARING TO BE WRINGING FIT (CLASS-5),  
INSERTED AFTER MACHINING & IRIDITING

METAL STAMP TMC PART NO. 1/8  
HIGH GOTHIC ON BOTTOM.  
PM-962-0

2	1	BB-120-2	BEARING, RACE	
REQ.	ITEM	PART NO.	F. BUDETTI DESCRIPTION	SYMBOL
AS NOTED			THE TECHNICAL MATERIEL CORP. MAMARONECK, NEW YORK	
ALUMINUM			BOX, RIGHT ANGLE DRIVE	
MATERIAL				
2024-T4			<i>R. Chant</i> 9-11-63	<i>aaq</i> <i>Rat</i> 3-30-64
TYPE & TEMPER	HEAT TREAT. SPEC.	DRAWN	CHECKED	FINAL APPROVAL
S404-IRIDITE		<i>BB</i>	<i>BB</i>	PM-962 0
FINISH & SPEC. NO.			ELEC. DES. APP.	MECH. DES. APP.

0	ORIGINAL RELEASE FOR PRODUCTION					
SYM	DESCRIPTION	DATE	CH. NO.	DRAFTS	CHECKER	ENG. APP.
	UNLESS OTHERWISE SPECIFIED:					
	DIMENSIONS ARE IN INCHES					
	TOLERANCES ON FRACTIONS ± 1/64					
	DECIMALS ± .005					
	ANGLES ± 1/2°					
	SCALE: 1:1					
	MAXIMUM ALLOWABLE TOLERANCES HAVE BEEN DETERMINED AND ANY DEVIATIONS WILL BE CAUSE FOR REJECTION.					
	REMOVE ALL BURRS AND SHARP EDGES					

1	GPT-200K	AX-395	A-3262	2-24-64
1	GPT-200K	AX-395	A-3232	9-11-63
1	GPT-200K	AX-395	A-3233	9-11-63
REQ. PER UNIT	MODEL	SECTION	ASS'Y. NO.	DATE
	USED ON			