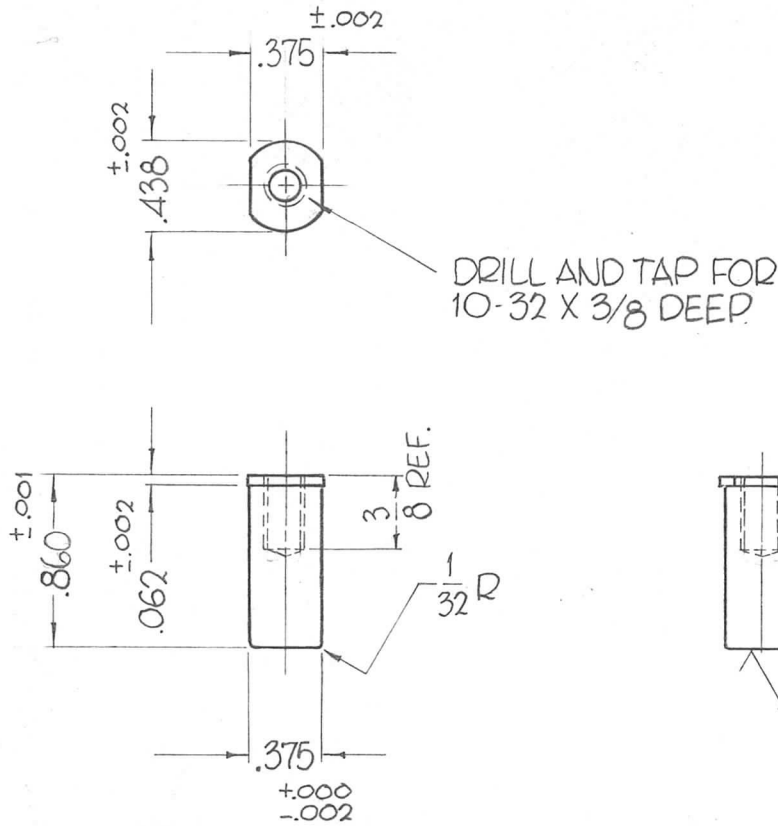


THE CONTENTS OF THIS DRAWING ARE THE EXCLUSIVE PROPERTY OF THE TECHNICAL MATERIEL CORP. ITS UNAUTHORIZED USE FOR REPRODUCTION IN WHOLE OR IN PART IS STRICTLY FORBIDDEN.

| | | | | | |
|---------------|-------------------|------------|---------|--------|---|
| REQ. PER UNIT | USED ON | | | PM-905 | Ø |
| | MODEL | ASS'Y. NO. | DATE | | |
| 30 | GPT-200K (AS-124) | AX-442 | 5-22-63 | | |



DRILL AND TAP FOR 10-32 X 3/8 DEEP.

FINISHING NOTES

POLISH BEFORE PLATING
S-245 SILVER PLATE BRIGHT

SURFACE BETWEEN THESE TWO POINTS (AROUND ENTIRE CIRCUMFERENCE) MUST BE FREE OF ALL TOOL MARKS.

16 (THIS SURFACE ONLY)

NOTE - ALL DIMENSIONS APPLY AFTER FINISHING.

| | | | | | | | | | | | | |
|---|-------------------------|-----------|---------|--------|---------|-----------|-----------|--------------------------|--|-----------------|---------|----------------|
| | | | | | | | REQ. ITEM | PART NO. | F. BUDETTI | DESCRIPTION | SYMBOL | |
| | | | | | | | | AS NOTED | THE TECHNICAL MATERIEL CORP. MAMARONECK, NEW YORK | | | |
| | | | | | | | | STOCK SIZE | SLUG, CONTACT | | | |
| | | | | | | | | BRASS | | | | |
| | | | | | | | | MATERIAL | | | | |
| 0 | ORIG. RELEASE FOR PROD. | 5-16-64 | | | SRG | | | | John C. Biele | aa | RAC | |
| SYM | DESCRIPTION | DATE | CH. NO. | DRAFTS | CHECKER | ENG. APP. | | | | | | |
| UNLESS OTHERWISE SPECIFIED DIMENSIONS ARE IN INCHES AND INCLUDE CHEMICALLY APPLIED OR PLATED FINISHES | | SCALE | | | | | | HALF HARD FREE MACHINING | | | | |
| | | 1" = 1" | | | | | | TYPE & TEMPER | HEAT TREAT. SPEC. | DRAWN | CHECKED | FINAL APPROVAL |
| DECIMALS | TOLERANCES | FRACTIONS | CODE | | | | | SEE NOTE | | | | |
| .X ± .05 | | ± 1/64 | | | | | | | | | | |
| .XX ± .01 | | ANGLES | | | | | | | | | | |
| .XXX ± .005 | | ± 0° 30' | | | | | | FINISH & SPEC. NO. | ELEC. DES. APP. | MECH. DES. APP. | PM-905 | Ø |