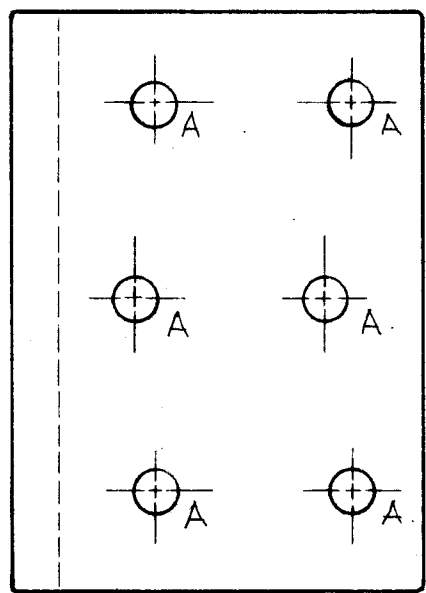
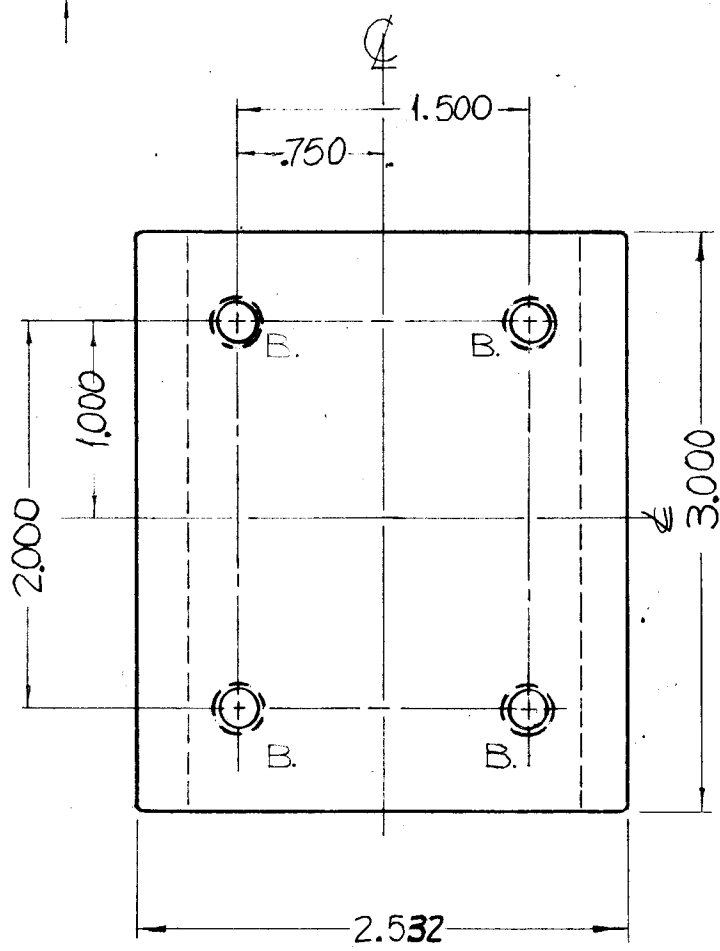
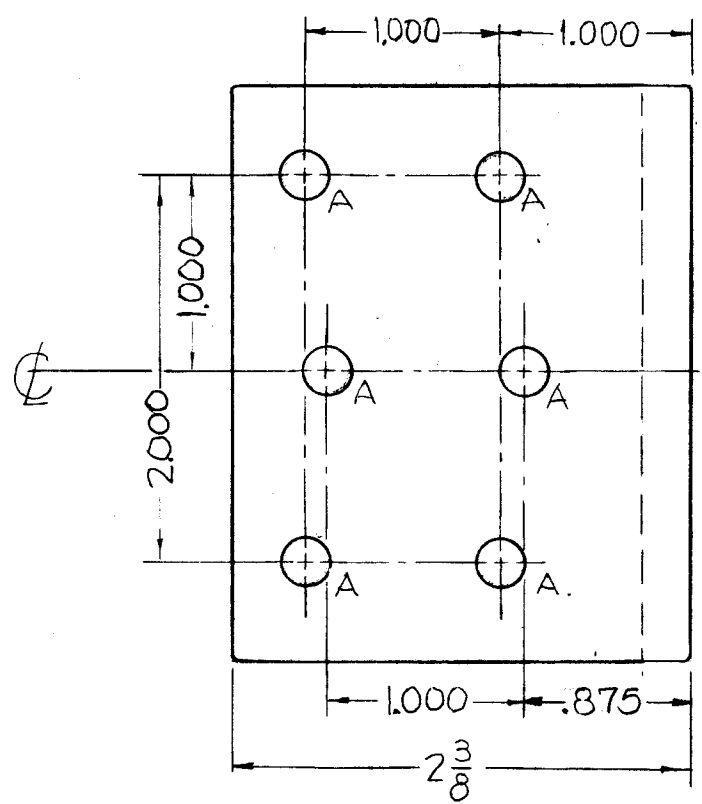
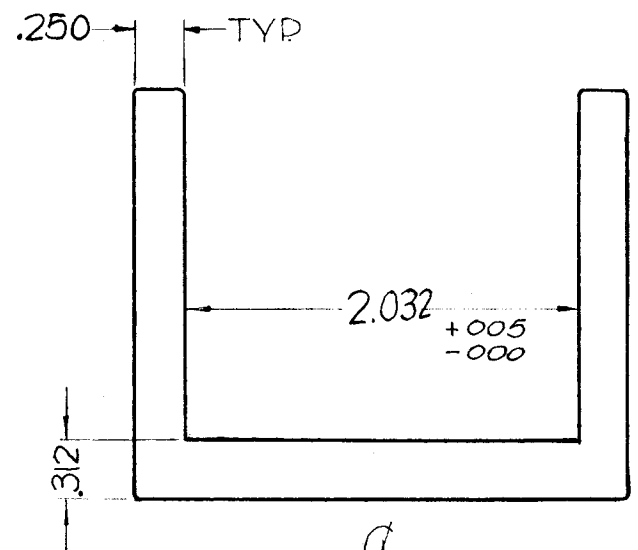


PM-851 0

REVISIONS

SYM	DESCRIPTION	DATE	E.M.N. NO.	DRAFT	CHKD	APPD
0	ORIGINAL RELEASE FOR PRODUCTION	5.18.64		WB		



HOLES REQ.
 A: 15/64 DIA. 12
 B: 1/4-20 TAPPED THRU 4

NOTES:
 ROUND ALL CORNERS & EDGES 1/32 RADIUS
 POLISH BEFORE PLATING
 S-245 SILVER PLATE, BRIGHT
 S-423 IRIDITE 18-D SILVER-KOTE

2	GPT-200K AS-123	AX-446
Q'TY./UNIT	MODEL USED ON	ASS'Y. NO.
SCALE	CODE	
FULL		

THE CONTENTS OF THIS DRAWING ARE THE EXCLUSIVE PROPERTY OF THE TECHNICAL MATERIEL CORP. ITS UNAUTHORIZED USE OR REPRODUCTION IN WHOLE OR IN PART IS STRICTLY FORBIDDEN.

REQ'D.	ITEM	PART NUMBER	DESCRIPTION	SYMBOL
LIST OF MATERIAL				
MATERIAL		THE TECHNICAL MATERIEL CORP. MAMARONECK, NEW YORK		
FINISH		TITLE "L"-BDACKET, WIDED MTG. (BANDSWITCH)		
UNLESS OTHERWISE SPECIFIED DIMENSIONS ARE IN INCHES AND INCLUDE CHEMICALLY APPLIED OR PLATED FINISHES		DRAWN J.F. VITDO		
DECIMALS .X ± .05 .XX ± .01 .XXX ± .005		CHECKED aa		
FRACTIONS ± 1/64 ANGLES ± 0° 30'		ELECT. DES. [Signature]		
TOLERANCES		MECH. DES. [Signature]		
		DATE 4/11/64		
		DATE 3/1/64		
		FINAL APPROVAL [Signature]		
		SHEET PM-851		
		REV. LTR. 0		

NOTES