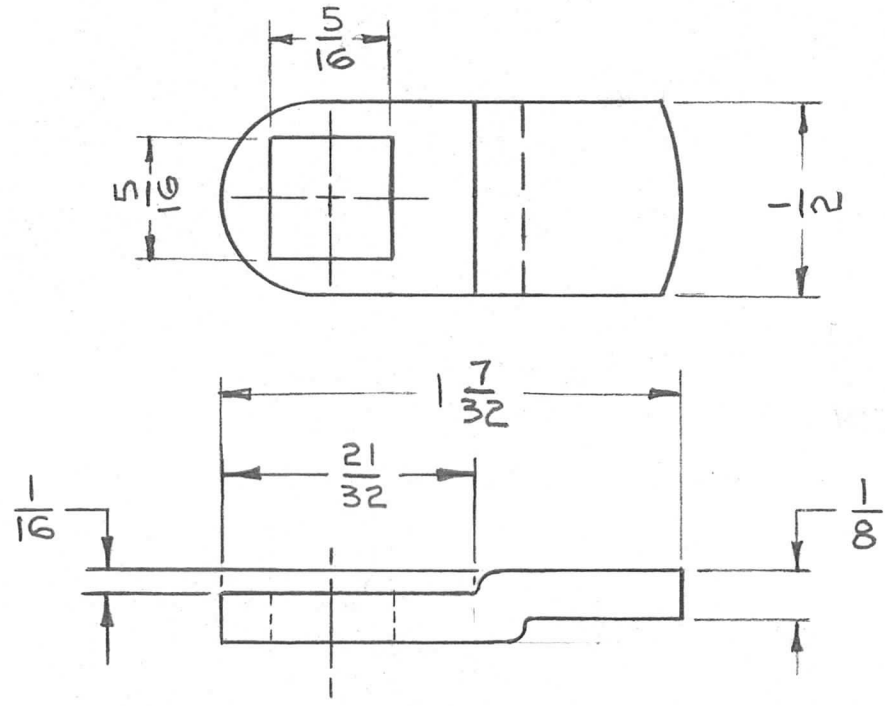


THE CONTENTS OF THIS DRAWING ARE THE EXCLUSIVE PROPERTY OF THE TECHNICAL MATERIEL CORP. ITS UNAUTHORIZED USE OR REPRODUCTION IN WHOLE OR IN PART IS STRICTLY FORBIDDEN.

REQ. PER UNIT	USED ON	
	MODEL	ASS'Y. NO.
1	RAK-215	DATE

PM-824



REF: CORBIN LOCK Co. (CAM #C2S) MODIFIED PER TMC REQUIREMENTS.

REQ.	ITEM	PART NO.	KRUY	DESCRIPTION	SYMBOL	
		1/8 THK STOCK SIZE	THE TECHNICAL MATERIEL CORP. MAMARONECK, NEW YORK			
		STEEL	CAM, LOCK			
		MATERIAL				
SYM	DESCRIPTION	DATE	CH. NO.	DRAFTS	CHECKER	ENG. APP.
UNLESS OTHERWISE SPECIFIED: DIMENSIONS ARE IN INCHES TOLERANCES ON FRAC. ± 1/64 DEC. ± .005 ANGLES ± 1/2°		SCALE: NO SCALE		MAXIMUM ALLOWABLE TOLERANCES HAVE BEEN DETERMINED AND ANY DEVIATIONS WILL BE CAUSE FOR REJECTION. REMOVE ALL BURRS AND SHARP EDGES		
		COLD ROLLED		DRAWN	CHECKED	FINAL APPROVAL
		NICKEL PLATE S-135				PM-824
		FINISH & SPEC. NO.	ELEC. DES. APP.	MECH. DES. APP.		