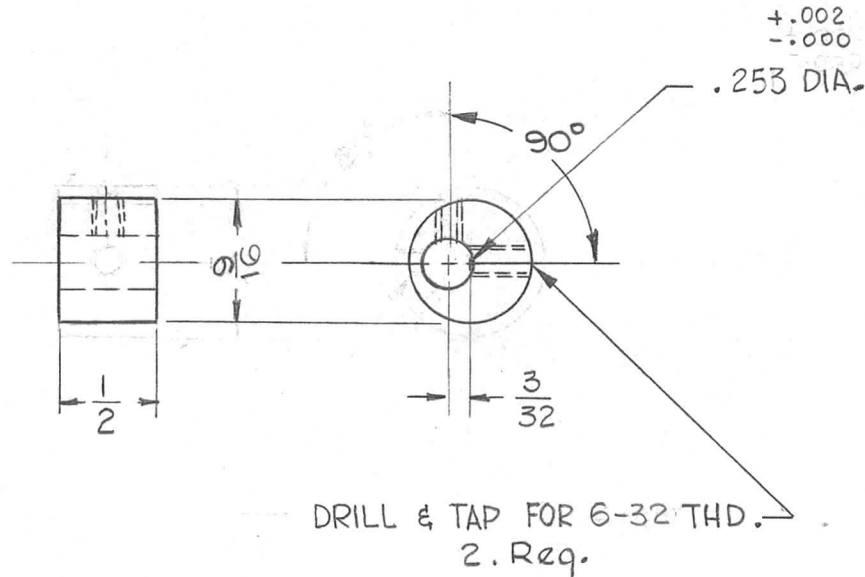


THE CONTENTS OF THIS DRAWING ARE THE EXCLUSIVE PROPERTY OF THE TECHNICAL MATERIEL CORP. ITS UNAUTHORIZED USE FOR REPRODUCTION IN WHOLE OR IN PART IS STRICTLY FORBIDDEN.

REQ. PER UNIT	USED ON		
	MODEL	ASS'Y. NO.	DATE
2	GPR-92	A-3095	11-7-62

PM-817 C



SYM	DESCRIPTION	DATE	CH. NO.	DRAFTS	CHECKER	ENG. APP.	REQ. ITEM	PART NO.	STRUMER DESCRIPTION	SYMBOL		
C	IN REVISION BLOCK CHG. NO. 9296 WAS 9269	11/2/63	10362	<i>MT</i>	<i>MT</i>	<i>MT</i>	5/8 DIA. ROD		THE TECHNICAL MATERIEL CORP. MAMARONECK, NEW YORK	CAM, LOCK, TUNING		
B	DRILL & TAP WAS FOR 4-40 THD.	9-23-63	9984	G.D.L.	<i>MT</i>	<i>MT</i>	STOCK SIZE					
A	RELOCATED TAPPED HOLE PART WAS 5/8 DIA, THD WAS 3-48	G-763	9296	<i>MT</i>	<i>MT</i>	<i>MT</i>	BRASS					
UNLESS OTHERWISE SPECIFIED DIMENSIONS ARE IN INCHES AND INCLUDE CHEMICALLY APPLIED OR PLATED FINISHES							SCALE	MATERIAL				
							DO NOT SCALE	FREE TURNING	G.D.L.	<i>file</i>	<i>MA</i> <i>BP</i>	
DECIMALS .X ± .05 .XX ± .01 .XXX ± .005							TOLERANCES	TYPE & TEMPER	HEAT TREAT. SPEC.	DRAWN	CHECKED	FINAL APPROVAL
FRACTIONS ± 1/64 ANGLES ± 0° 30'							CODE	NONE		<i>MA</i>	<i>D.M.</i>	PM-817 C
							FINISH & SPEC. NO.	ELEC. DES. APP.	MECH. DES. APP.			