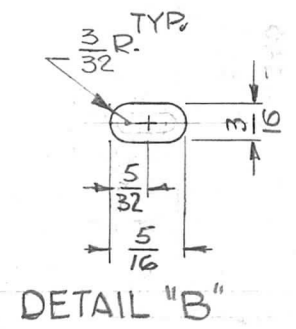
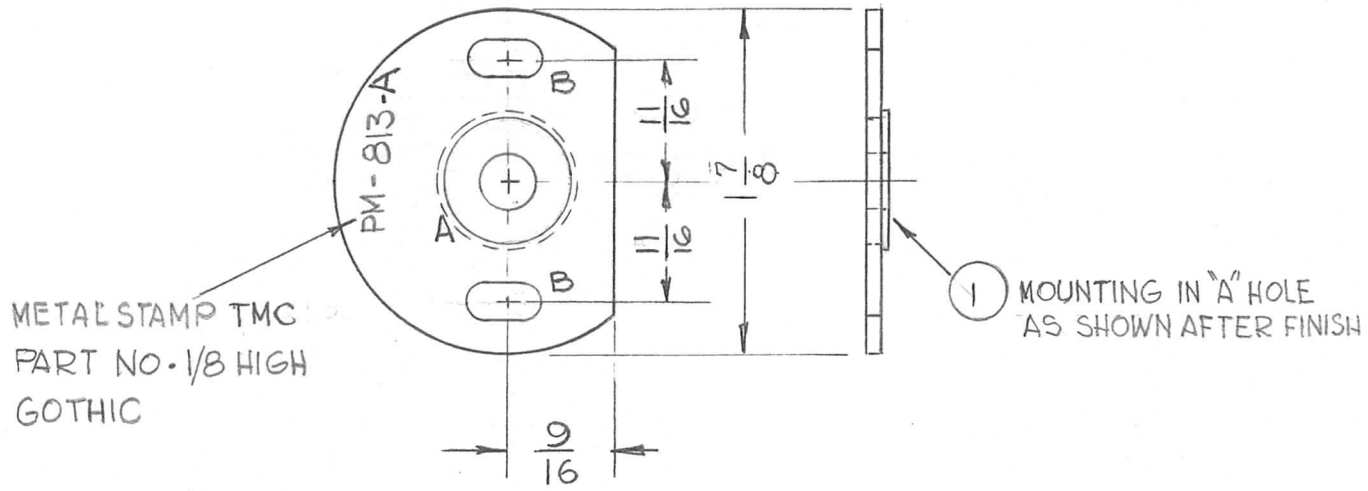


THE CONTENTS OF THIS DRAWING ARE THE EXCLUSIVE PROPERTY OF THE TECHNICAL MATERIEL CORP. ITS UNAUTHORIZED USE OR REPRODUCTION IN WHOLE OR IN PART IS STRICTLY FORBIDDEN.

REQ. PER UNIT 2	USED ON		PM-813	A
	MODEL GPR-92	ASS'Y. NO.		

HOLE	DESCRIPTION	REQ.
A	.6249-.6246 DIA.	1
B	SEE DETAIL	2



						1	1	BB-126-5	BEARING, BALL	A	
						REQ.	ITEM	PART NO.	DESCRIPTION	SYMBOL	
								1/16 THK. STOCK SIZE	THE TECHNICAL MATERIEL CORP. MAMARONECK, NEW YORK		
								ALUMINUM	PLATE, MOUNTING, BEARING		
A	DIMS CLARIFIED	11-30-62	7758								
SYM	DESCRIPTION	DATE	CH. NO.	DRAFTS	CHECKER	ENG. APP.					
UNLESS OTHERWISE SPECIFIED: DIMENSIONS ARE IN INCHES TOLERANCES ON FRAC. ± 1/64 DEC. ± .005 ANGLES ± 1/2°		SCALE: DO NOT SCALE				5052-H32		G.D.L.			
		MAXIMUM ALLOWABLE TOLERANCES HAVE BEEN DETERMINED AND ANY DEVIATIONS WILL BE CAUSE FOR REJECTION. REMOVE ALL BURRS AND SHARP EDGES				TYPE & TEMPER	HEATTREAT. SPEC.	DRAWN	CHECKED	FINAL APPROVAL	
						YELLOW IRIDITE 5404			D.M.	PM-813	A
						FINISH & SPEC. NO.		ELEC. DES. APP.	MECH. DES. APP.		