

THE CONTENTS OF THIS DRAWING ARE THE EXCLUSIVE PROPERTY OF THE TECHNICAL MATERIEL CORP. ITS UNAUTHORIZED USE OR REPRODUCTION IN WHOLE OR IN PART IS STRICTLY FORBIDDEN.

REQ. PER UNIT

USED ON

MODEL

ASS'Y. NO.

DATE

HFR-1/T

A-3042

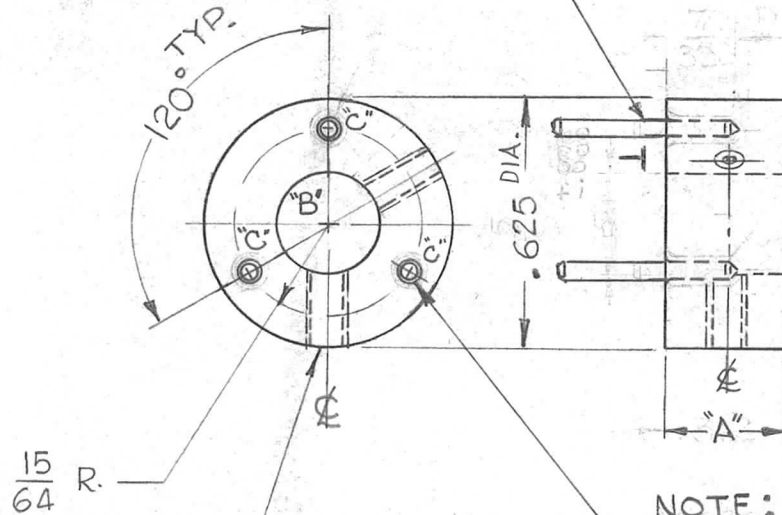
5-26-62

PM-780

C

T.M.C. PART NO.	"A"	"B"	REQ.
PM-780-1	.250	.3135REAM	1
PM-780-2	.375	.3135REAM	1
PM-780-3	.250	.251REAM	1

1 PRESS FIT IN ALL "C" HOLES AS SHOWN AFTER FINISHING



~ HOLE ~  
 "C" ~  $\frac{.0626}{.0621}$  DIA. x  $\frac{7}{32}$  DP. RE ~ 3-REQ.

NOTE:  
 DEBURR "C" HOLES APPROX.  $\frac{1}{32}$  DR.

DRILL & TAP FOR  
 6-32 SET SCREW  
 2 Req

REQ.	ITEM	PART NO.	DESCRIPTION	SYMBOL
3	1	PN-117	PIN, STRAIGHT, DOWEL	
STAINLESS STEEL			THE TECHNICAL MATERIEL CORP. MAMARONECK, NEW YORK	
#303			COUPLER, SHAFT	
S104 PASSIVATE			G.D.L. <i>[Signature]</i> <i>[Signature]</i>	
FINISH & SPEC. NO.			DRAWN J. ANGER CHECKED <i>[Signature]</i> FINAL APPROVAL <i>[Signature]</i>	
			ELEC. DES. APP. MECH. DES. APP. PM-780 C	

SYM	DESCRIPTION	DATE	CH. NO.	DRAFTS	CHECKER	ENG. APP.
C	ITEM (1) ADDED; NOTE ADDED (C) HOLES WERE .0595 DIA.	9-12-62	7200	ef.	JH	<i>[Signature]</i>
B	DRAWING REINSTATED	7-6-62		SRG	<i>[Signature]</i>	<i>[Signature]</i>
A	OBSOLETE NOTE ADDED	6-27-62				TAK

UNLESS OTHERWISE SPECIFIED:  
 DIMENSIONS ARE IN INCHES  
 TOLERANCES ON  
 FRAC.  $\pm 1/64$  DEC.  $\pm .005$  ANGLES  $\pm 1/2^\circ$

SCALE: DO NOT SCALE  
 MAXIMUM ALLOWABLE TOLERANCES HAVE BEEN DETERMINED AND ANY DEVIATIONS WILL BE CAUSE FOR REJECTION.  
 REMOVE ALL BURRS AND SHARP EDGES