

THE CONTENTS OF THIS DRAWING ARE THE EXCLUSIVE PROPERTY OF THE TECHNICAL MATERIEL CORP. ITS UNAUTHORIZED USE OR REPRODUCTION IN WHOLE OR IN PART IS STRICTLY FORBIDDEN.

REQ. PER UNIT

2

GPR-92

USED ON

MODEL

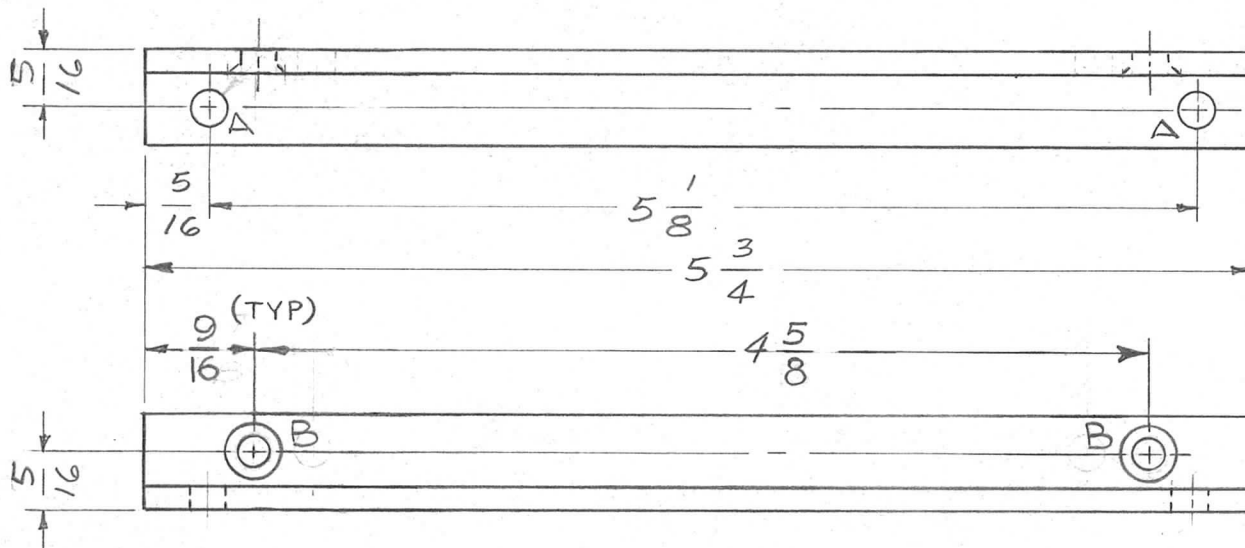
ASS'Y. NO.

DATE

10-16-62

PM-769

A



HOLE LEGEND

- A - 3/16 DIA. - 2 REQ
- B - 5/32 DIA., CSK 82° x .279 DIA. - 2 REQ

REQ.	ITEM	PART NO.	DESCRIPTION			SYMBOL
			GELLMAN			
		1/8 x 1/2 x 1/2	THE TECHNICAL MATERIEL CORP.			
		STOCK SIZE	MAMARONECK, NEW YORK			
		EXTRUDED ALUMINUM	SUPPORT, ANGLE			
		MATERIAL				
A	ALL HOLES WERE 3/16 DIA	G-14-63 9286	W.S.	JMA	BP	
SYM	DESCRIPTION	DATE	CH. NO.	DRAFTS	CHECKER	ENG. APP.
UNLESS OTHERWISE SPECIFIED:		SCALE: 1:1				
DIMENSIONS ARE IN INCHES		MAXIMUM ALLOWABLE TOLERANCES HAVE BEEN DETERMINED AND ANY DEVIATIONS WILL BE CAUSE FOR REJECTION.				
TOLERANCES ON		REMOVE ALL BURRS AND SHARP EDGES				
FRAC. ± 1/64 DEC. ± .005 ANGLES ± 1/2°		6063-T5		W.S.	JMA	BP
		TYPE & TEMPER	HEAT TREAT. SPEC.	DRAWN	CHECKED	FINAL APPROVAL
		5404-YEL. IRIDITE		W.S.	MP	PM-769 A
		FINISH & SPEC. NO.	ELEC. DES. APP.	MECH. DES. APP.		