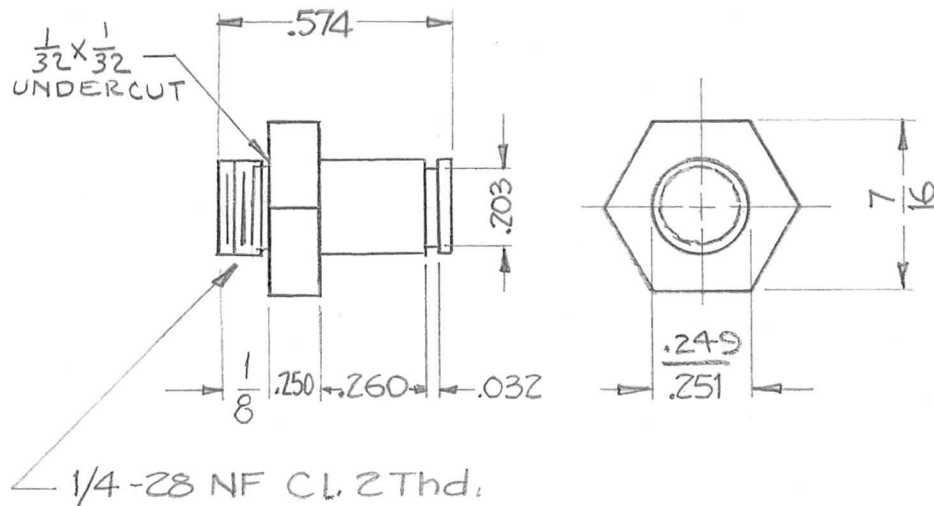


REQ. PER. UNIT	USED ON			PM-665	B
	MODEL	ASS'Y. NO.	DATE		
1	CHG-1	GEAR ASS'Y	9-16-60		



REQ.	ITEM	PART NO.	DESCRIPTION				SYMBOL
		7/16 HEX	THE TECHNICAL MATERIEL CORP.				
		STOCK SIZE	MAMARONECK, NEW YORK				
		BRASS	SHAFT, GEAR				
		MATERIAL					
B	1	DIM. .250 WAS .125	11-29-60	3585	<i>[Signature]</i>	<i>[Signature]</i>	
A	1	UNDERCUT ADDED	9-29-60	3106	<i>[Signature]</i>	<i>[Signature]</i>	
ISSUE	ITEM	CHANGED FROM	DATE	CH. NO.	DRAFTS	CHECKER	ENG. APP.
TOLERANCES			SCALE: 2X				
DEC. DIM. ± .0015			MAXIMUM ALLOWABLE TOLERANCES HAVE BEEN DETERMINED AND ANY DEVIATIONS WILL BE CAUSE FOR REJECTION. REMOVE ALL BURRS AND SHARP EDGES				
FRAC. DIM. ± 1/64							
ANGULAR DIM. ±							
FREE TURING			<i>[Signature]</i>	<i>[Signature]</i>	<i>[Signature]</i>		
TYPE & TEMPER		HEAT TREAT. SPEC.	DRAWN	CHECKED	FINAL APPROVAL		
				<i>[Signature]</i>	PM-665 B		
FINISH & SPEC. NO.		ELEC. DES. APP	MECH. DES. APP				