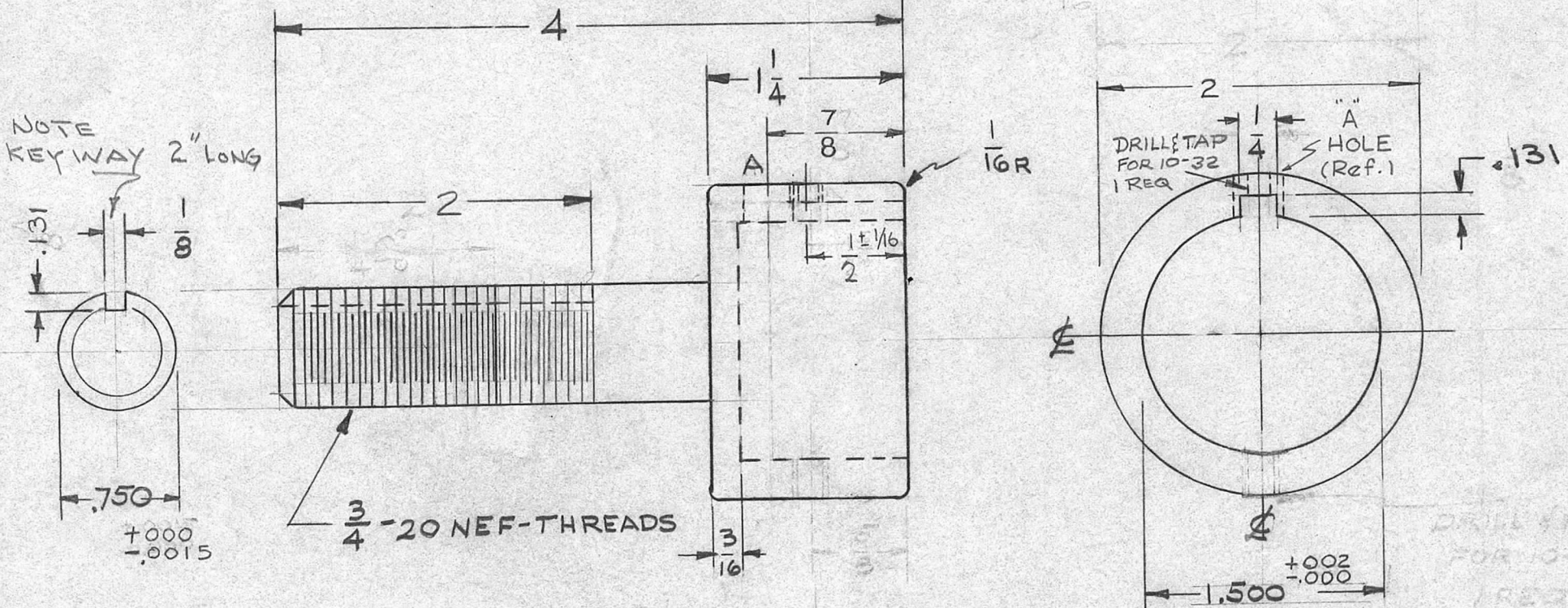


REQ. PER UNIT	USED ON		
	MODEL	ASS'Y. NO.	DATE
1	GPT-40K	AX-209	4-14-60
1	GPT-40K)3 As-125	AX-353	12-23-63
1	GPT-40K)4 As-125	AX-458	12-23-63

PM-640 H



A $\frac{5}{16}$ DIA. HOLE 1 REQ

H	1	ADDED $\frac{1}{16}$ TOL. TO $\frac{1}{2}$ DIM	8-10-66	16745	RME	JCB	QB
G	1	PICT: $\frac{1}{2}$ DIM. WAS $\frac{5}{8}$	1-8-65	13259	RL	JCB	QB
F	1	DWG UPDATED	12/23/63	10642	RL	JCB	QB
E	1	KEYWAY CLARIFIED	7-12-62	6884	RL	JCB	QB
D	1	DRILL & TAP 10-32 RELOCATED	9-28-60	3028	RU	JCB	QB

C	1	2 Thread Length was $1\frac{3}{8}$	9-8-60	2915	RU	JCB	QB
B	3	$1\frac{3}{8}$ DIM. WAS $1\frac{1}{4}$ DIM	8	2676	CY	JCB	QB
	2	TOLERANCES ADDED	3				
A	1	'A' HOLE ADDED	60				
		.131 was $\frac{1}{8}$	6/28/60	2586	JCB	JCB	QB

ISSUE	ITEM	CHANGED FROM	DATE	CH. NO.	DRAFTS	CHECKER	ENG. APP.
		TOLERANCES	SCALE: FULL				

DEC. DIM. \pm
 FRAC. DIM. \pm
 ANGULAR DIM. \pm

MAXIMUM ALLOWABLE TOLERANCES HAVE BEEN DETERMINED AND ANY DEVIATIONS WILL BE CAUSE FOR REJECTION:
 REMOVE ALL BURRS AND SHARP EDGES

REQ.	ITEM	PART NO.	DESCRIPTION	SYMBOL
			THE TECHNICAL MATERIEL CORP. MAMARONECK, NEW YORK	
		STOCK SIZE BRASS ROD FREE TURNING	HUB, SHAFT, TOP	
		MATERIAL		
			10/16/60	QB
		TYPE & TEMPER RHODIUM PLATE .000025	DRAWN JCB	CHECKED JCB
		FINISH & SPEC. NO.	ELEC. DES. APP	MECH. DES. APP
			PM-640	H