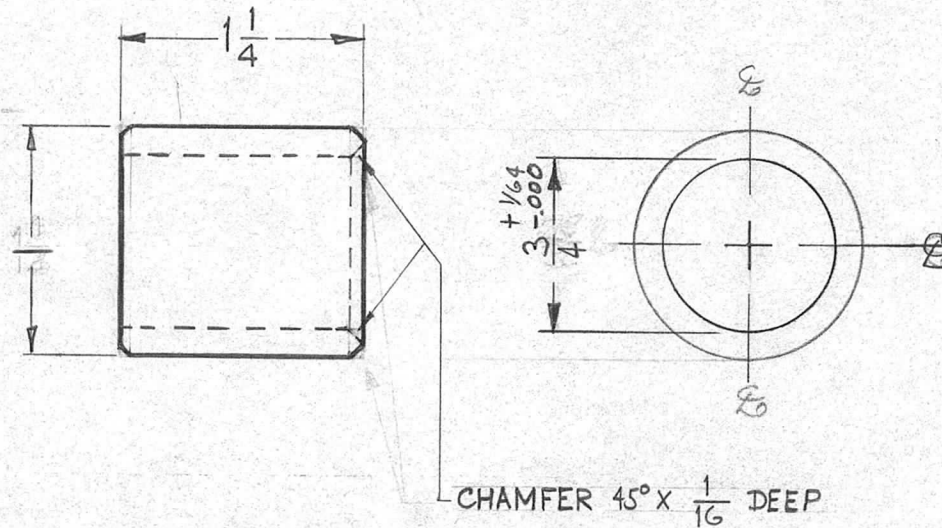


REQ. PER UNIT	USED ON			PM-625	C
	MODEL	ASS'Y. NO.	DATE		
2	GPT-40K	ΔX-209	3-16-60		



ISSUE	ITEM	CHANGED FROM	DATE	CH. NO.	DRAFTS	CHECKER	ENG. APP.	REQ. ITEM	PART NO.	DESCRIPTION	SYMBOL				
C	1	1" DIM WAS 1-1/8"	12-18-62	7891	<i>[Signature]</i>	<i>[Signature]</i>	<i>[Signature]</i>	1		THE TECHNICAL MATERIEL CORP. MAMARONECK, NEW YORK BUSHING, END, PA FILAMENT					
B	2	ID DIM. 3/4 WAS 25/32	5-11-61	4886	<i>[Signature]</i>	<i>[Signature]</i>	<i>[Signature]</i>		STOCK SIZE						
	1	ADDED 45° X 1/16 DP. CHAMFER	7-18-60	2588	<i>[Signature]</i>	<i>[Signature]</i>	<i>[Signature]</i>		MATERIAL						
A	1	1/8 WAS 1/4 DIA. 25/32 WAS 29/32							Free Turning						
TOLERANCES			SCALE:					TYPE & TEMPER	HEAT TREAT. SPEC.	DRAWN	CHECKED	FINAL APPROVAL			
DEC. DIM. ±			MAXIMUM ALLOWABLE TOLERANCES HAVE BEEN DETERMINED AND ANY DEVIATIONS WILL BE CAUSE FOR REJECTION. REMOVE ALL BURRS AND SHARP EDGES									PM-625	C		
FRAC. DIM. ± 1/64															
ANGULAR DIM. ±															
								FINISH & SPEC. NO.	ELEC. DES. APP.	MECH. DES. APP.					