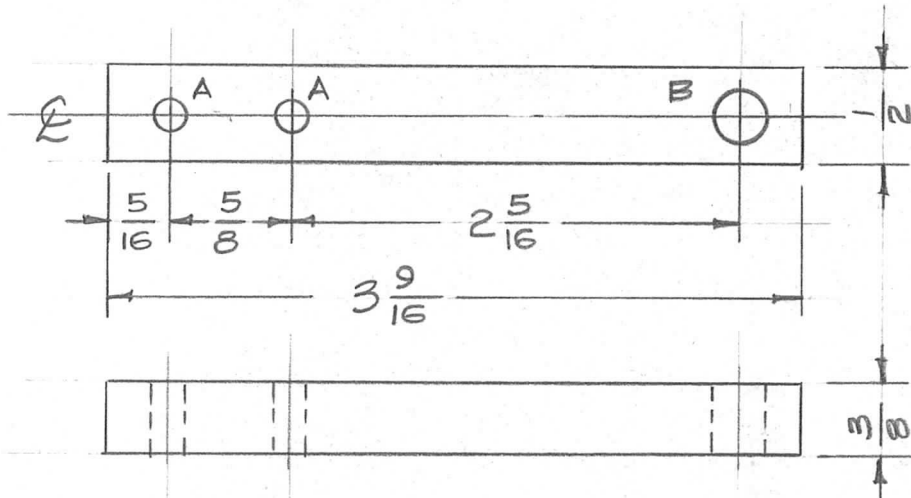


REQ. PER. UNIT	USED ON			PM-574
	MODEL	ASS'Y. NO.	DATE	
1	PS-5 PAL-1K		6-15-59	



A - $\frac{11}{64}$ (.171) D. 2 Req.
 B - $\frac{9}{32}$ (.281) D. 1 Req.

ISSUE	ITEM	CHANGED FROM	DATE	CH. NO.	DRAFTS	CHECKER	ENG. APP.	REQ. ITEM	PART NO.	DESCRIPTION	SYMBOL	
								3/8 x 1/2 BAR		THE TECHNICAL MATERIEL CORP. MAMARONECK, NEW YORK SUPPORT, TUBE CLAMP		
								STOCK SIZE				
								ALUMINUM				
								MATERIAL				
								2024-T3		16 ⁶ /15/59		
TOLERANCES			SCALE: FULL (Do Not Scale)									
DEC. DIM. ± FRAC. DIM. ± 1/64 ANGULAR DIM. ±			MAXIMUM ALLOWABLE TOLERANCES HAVE BEEN DETERMINED AND ANY DEVIATIONS WILL BE CAUSE FOR REJECTION. REMOVE ALL BURRS AND SHARP EDGES					TYPE & TEMPER	HEAT TREAT. SPEC.	DRAWN	CHECKED	FINAL APPROVAL
								S404 Iridite				PM-574
								FINISH & SPEC. NO.	ELEC. DES. APP	MECH. DES. APP		