

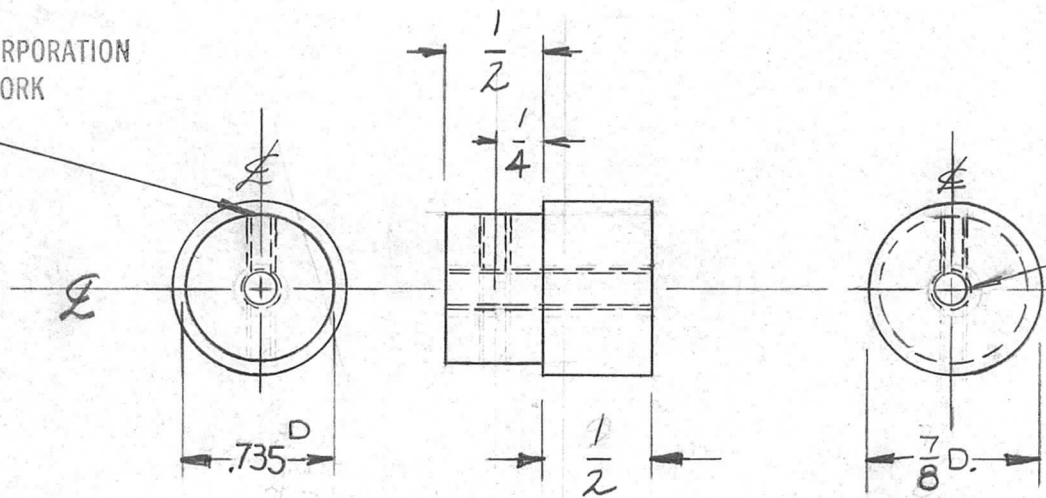
THE TECHNICAL MATERIEL CORPORATION claims proprietary right in the material disclosed hereon. This drawing is issued in confidence for engineering information only and may not be reproduced or used to manufacture anything shown hereon without permission from THE TECHNICAL MATERIEL CORPORATION to the user. This drawing is loaned for mutual assistance and is subject to recall at any time.

REQ. PER. UNIT	USED ON			PM-557	E
	MODEL	ASS'Y. NO.	DATE		
2	GPT-10K	A-1644	2-20-59		

Property of:

THE TECHNICAL MATERIEL CORPORATION  
MAMARONECK, NEW YORK

DRILL + TAP  
FOR 6-32  
1 HOLE



DRILL + TAP  
FOR 10-32

E	2	Dim. .735 was 3/4	3-1-61	A269	RU	JCB	JCB
D	1	FINISH WAS COPPER FLASH WAS 2 RE Q.	9-6-60	2904	RU	JCB	JCB
C	1	DRILL & TAP 6-32 WAS 2 RE Q.	8-8-60		Cy	JCB	JCB
B	1	10-32 TAP WAS 1/4-20	7/26/59	1232	16	JCB	JCB
A	1	1/4-20 WAS 10-32 (For New Feedthru)	7/24/59			JCB	JCB
A	1	1/4-20 TO 10-32 DRILL + TAP				JCB	JCB

REQ.	ITEM	PART NO.	DESCRIPTION		SYMBOL
			THE TECHNICAL MATERIEL CORP.		
			MAMARONECK, NEW YORK		
			INSERT, COIL FORM		
			GPT-10K		
			MATERIAL		
			7/8 OD,		
			STOCK SIZE		
			BRASS		
			HALF HARD		
			TYPE & TEMPER		
			HEAT TREAT. SPEC.		
			SILVER PATE & CLEAR IRIDITE		
			FINISH & SPEC. NO.		
			DRAWN		
			CHECKED		
			FINAL APPROVAL		
			ELEC. DES. APP		
			MECH. DES. APP		

ISSUE	ITEM	CHANGED FROM	DATE	CH. NO.	DRAFTS	CHECKER	ENG. APP.
TOLERANCES			SCALE: $\pm$				
DEC. DIM. $\pm$			MAXIMUM ALLOWABLE TOLERANCES HAVE BEEN DETERMINED AND ANY DEVIATIONS WILL BE CAUSE FOR REJECTION. REMOVE ALL BURRS AND SHARP EDGES				
FRAC. DIM. $\pm$ 1/64							
ANGULAR DIM. $\pm$							