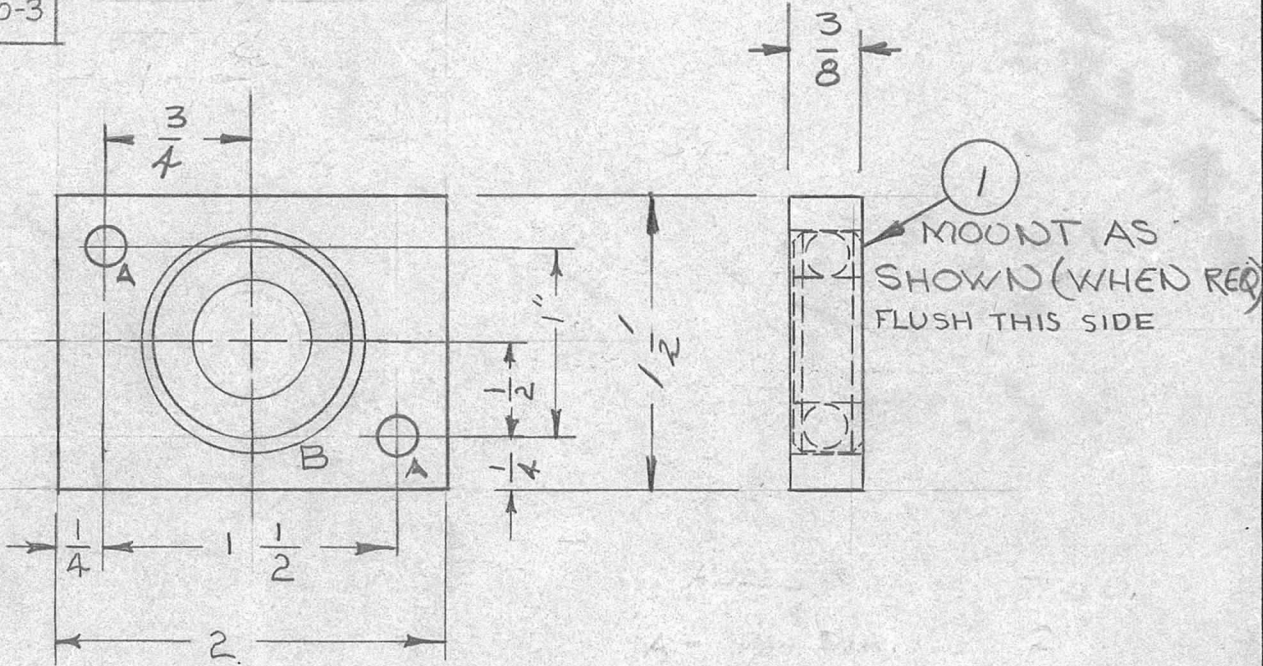


REQ. PER UNIT	USED ON			PM-533	D
	MODEL	ASS'Y. NO.	DATE		

### CHART I

TMC PART NO.	A HOLE	B HOLE	ITEM I
PM 533-1	13/64	.500 +.002 -.001	NOT USED
PM 533-2	13/64	1.1247 / 1.1250 DIA C BORE	BB120-3
PM 533-3	DR + TAP 10-32	1.1247 / 1.1250 DIA C BORE	BB120-3



#### NOTICE TO PERSONS RECEIVING THIS DRAWING

THE TECHNICAL MATERIEL CORPORATION claims proprietary right in the material disclosed hereon. This drawing is issued in confidence for engineering information only and may not be reproduced or used to manufacture anything shown hereon without permission from THE TECHNICAL MATERIEL CORPORATION to the user. This drawing is loaned for mutual assistance and is subject to recall at any time.

Property of:

THE TECHNICAL MATERIEL CORPORATION  
MAMARONECK, NEW YORK

ISSUE	ITEM	CHANGED FROM	DATE	CH. NO.	DRAFTS	CHECKER	ENG. APP.	REQ.	ITEM	PART NO.	DESCRIPTION	SYMBOL
D		PM 533-3 ADDED	9/15/71	20492	CD	ES	ES	1	1	SEE CHART	BEARING, BALL	
C		ADD C'BORE, CHNG CHART, REDIMENSIONED	12-2-69	19670	KD	KH	FB					
B		ADD CHART	7-8-68	18994	F.W.	JR	FB					
A	1	ADDED +.002 TOLERANCE TO (B) HOLE	7-1-62	6848	V.R.R.							
TOLERANCES								MATERIAL				
SCALE:								MATERIAL				
DEC. DIM. ±								2024-T4				
FRAC. DIM. ± 1/64								IRIDIUM - 5404				
ANGULAR DIM. ±								FINISH & SPEC. NO.				
MAXIMUM ALLOWABLE TOLERANCES HAVE BEEN DETERMINED AND ANY DEVIATIONS WILL BE CAUSE FOR REJECTION. REMOVE ALL BURRS AND SHARP EDGES								DRAWN				
								CHECKED				
								FINAL APPROVAL				
								ELEC. DES. APP				
								MECH. DES. APP				
								PM-533-D				