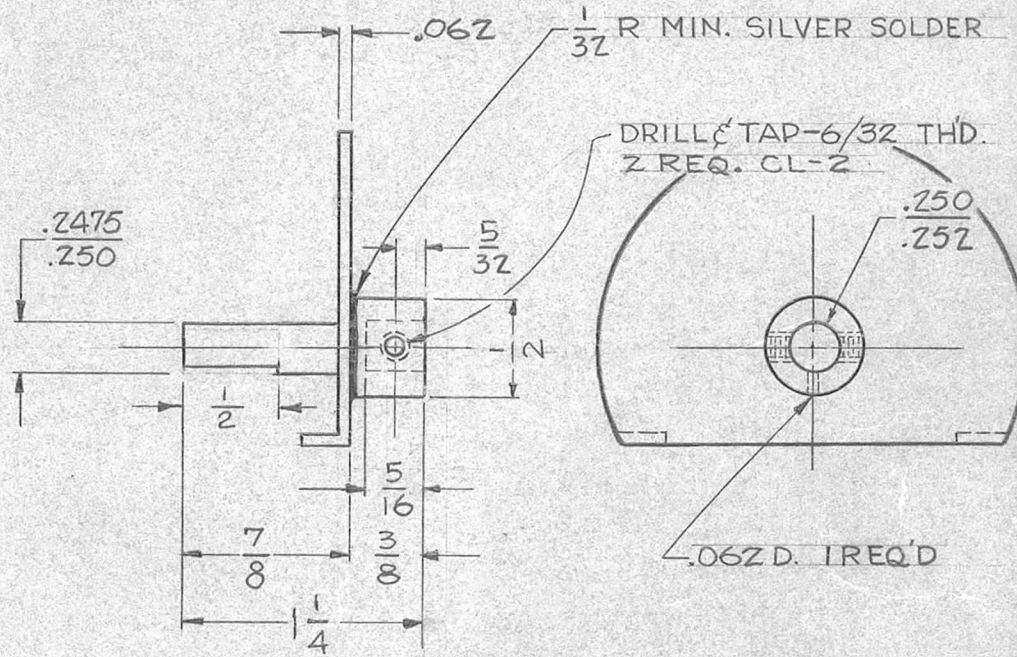
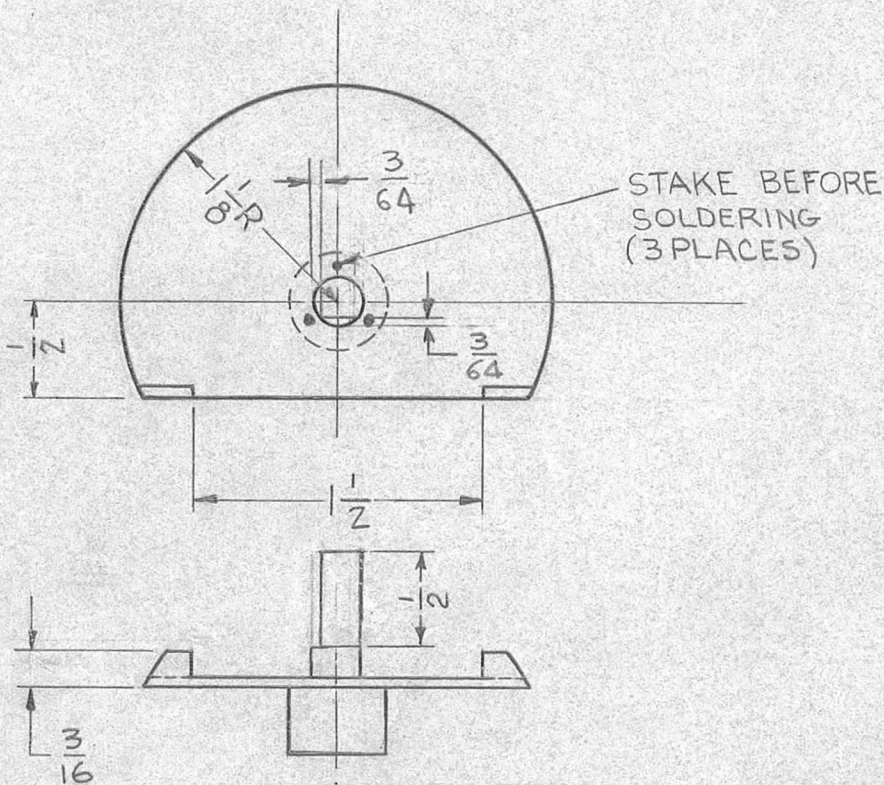


REQ. PER UNIT	USED ON			PM-520	D
	MODEL	ASS'Y. NO.	DATE		
1	RTF-2		11-26-58		



D	RELOCATED & ADDED FLAT ON SHAFT	10-7-66	16992	G.D.L.	J.C.B.	J.C.B.
C	ADDED STAKE BEFORE SOLDERING NOTE	8-5-66	16713	RME	J.C.B.	J.C.B.
B	1 3/64 X 1/2 FLAT ADDED	5-21-64	11418	WB	J.C.B.	J.C.B.
A	4 3/16 dim. was 1/4	2/3/59	756	J.C.B.	J.C.B.	J.C.B.
	3 .062 was .040					
	2 3/8, 5/32 dim added					
1 1 1/4 dim. was 1 3/8						

ISSUE	ITEM	CHANGED FROM	DATE	CH. NO.	DRAFTS	CHECKER	ENG. APP.
TOLERANCES			SCALE:				
DEC. DIM. ± .0015			MAXIMUM ALLOWABLE TOLERANCES HAVE BEEN DETERMINED AND ANY DEVIATIONS WILL BE CAUSE FOR REJECTION.				
FRAC. DIM. ± 1/64			REMOVE ALL BURRS AND SHARP EDGES				
ANGULAR DIM. ±							

REQ.	ITEM	PART NO.	DESCRIPTION	SYMBOL
			THE TECHNICAL MATERIEL CORP.	
			MAMARONECK, NEW YORK	
			SHAFT STOP, 180°	
			STOCK SIZE	
			BRASS	
			MATERIAL	
			FREE TURNING	
			J.C. BIELE	
			DRAWN	
			CHECKED	
			FINAL APPROVAL	
			NICKEL PLATE	
			FINISH & SPEC. NO.	
			ELEC. DES. APP	
			MECH. DES. APP	
			PM-520	D