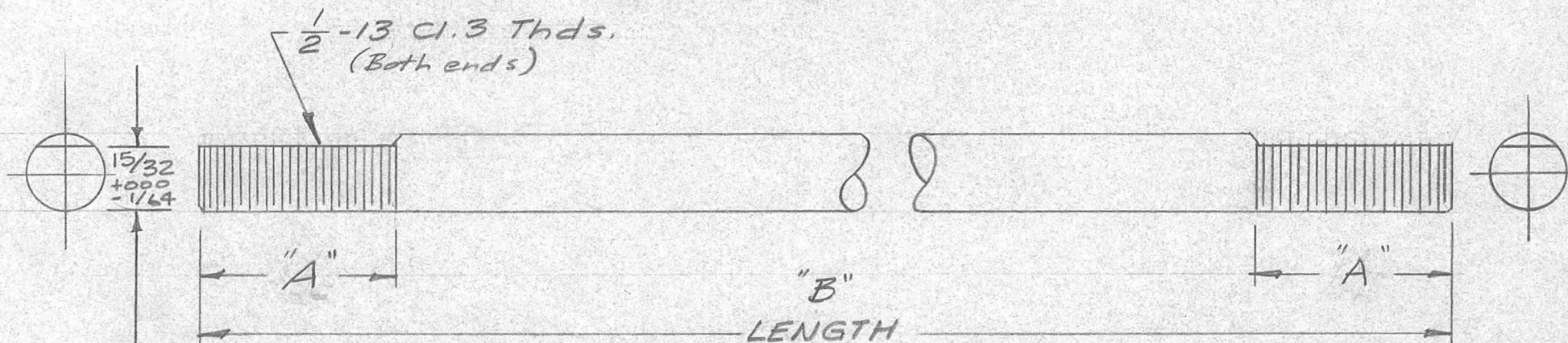


TMC NO.	DIM. "A" (Threads)	DIM. "B" (Length)	USED ON	REQ. PER UNIT	USED ON			PM-511	B
					MODEL	ASS'Y. NO.	DATE		
PM-511-1	2 5/16	52 1/2	TER-5000-70	2			1-9-59		



Flat entire threaded portion on both ends as shown.  
Both Flats Must BE on the same line

ISSUE	ITEM	CHANGED FROM	DATE	CH. NO.	DRAFTS	CHECKER	ENG. APP.	REQ. ITEM	PART NO.	DESCRIPTION	SYMBOL	
								1/2 D. Rod		THE TECHNICAL MATERIEL CORP.		
B	1	DIM "A" WAS 2" ON-1	4/3/66	16329	C.H.	J.P.	J.P.	STOCK SIZE		MAMARONECK, NEW YORK		
A	1	FINISH WAS S101 CAUSTIC DIP	11-12-63	10364		M.H.	J.P.	Aluminum		ROD, CENTER CONDUCTOR		
								MATERIAL				
								6063		16 1/2/59		
								TYPE & TEMPER	HEAT TREAT. SPEC.	DRAWN	CHECKED	FINAL APPROVAL
								S404-YELLOW IRIDITE			G.G.	PM-511
								FINISH & SPEC. NO.		ELEC. DES. APP	MECH. DES. APP	B

DEC. DIM. ±  
FRAC. DIM. ± 1/64  
ANGULAR DIM. ±

SCALE: FULL  
MAXIMUM ALLOWABLE TOLERANCES HAVE BEEN DETERMINED AND ANY DEVIATIONS WILL BE CAUSE FOR REJECTION.  
REMOVE ALL BURRS AND SHARP EDGES