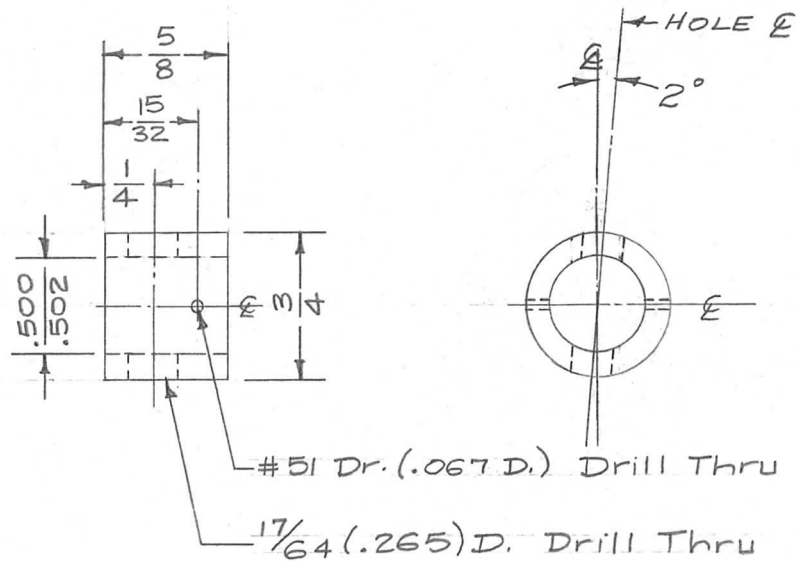


REQ. PER UNIT	USED ON			PM-473	A
	MODEL	ASS'Y. NO.	DATE		
1	ATS-50/70TU		12-18-57		



ISSUE	ITEM	CHANGED FROM	DATE	CH. NO.	DRAFTS	CHECKER	ENG. APP.	REQ. ITEM	PART NO.	DESCRIPTION	SYMBOL	
								3/4 O.D.		THE TECHNICAL MATERIEL CORP. MAMARONECK, NEW YORK COLLAR, DRIVE SHAFT		
								STOCK SIZE				
								BRASS				
								MATERIAL				
A	1	HOLE & SHIFTED 2° OFF OF PIECE E.	3/31/58	1	16	SPR	JOR	HALF HARD	N	16 12/18/57	AMC	AMC
TOLERANCES			SCALE: FULL									
DEC. DIM. ±			MAXIMUM ALLOWABLE TOLERANCES HAVE BEEN DETERMINED AND ANY DEVIATIONS WILL BE CAUSE FOR REJECTION.									
FRAC. DIM. ± 1/64			REMOVE ALL BURRS AND SHARP EDGES									
ANGULAR DIM. ± .5°												
								TYPE & TEMPER	HEAT TREAT. SPEC.	DRAWN	CHECKED	FINAL APPROVAL
								5245 SILVER PLATE	.0005	JOR	SPR	PM-473
								FINISH & SPEC. NO.	ELEC. DES. APP.	MECH. DES. APP.		A