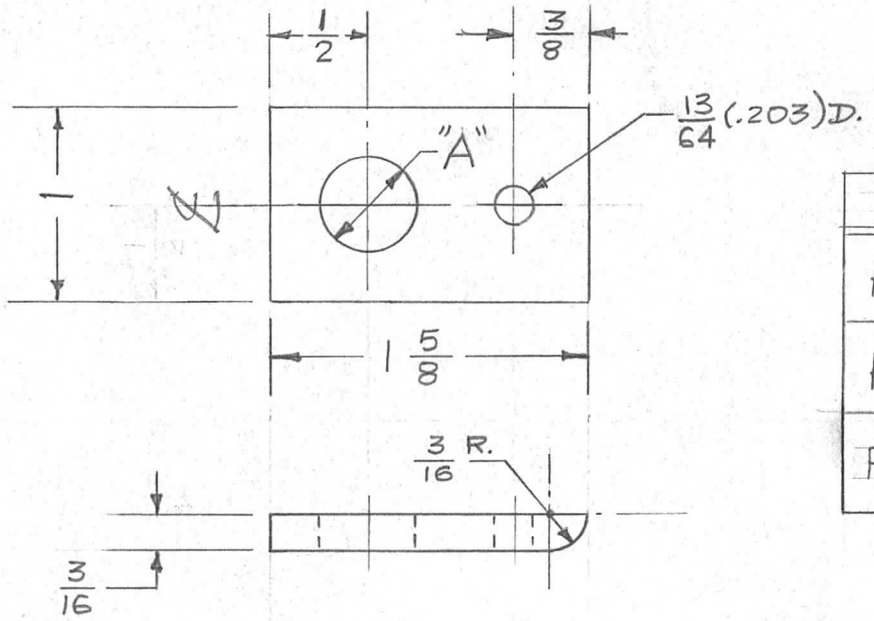


NUMBER	REQ. PER UNIT	USED ON		
		MODEL	ASS'Y. NO.	DATE
PM-433-1	2	TER-5000	A-1404	3-21-57
PM-433-2	2	TER-5000	A-1405	3-21-57
PM-433-3	2	TER-5000-70	A-1586	1-8-59

PM-433 A



TMC NO.	"A" HOLE
PM-433-1	$\frac{1}{2}$ D
PM-433-2	$\frac{13}{64}$ D
PM-433-3	$\frac{17}{64}$ D

REQ. ITEM	PART NO.	DESCRIPTION	SYMBOL
	$\frac{3}{16}$ THK. X 1" WIDE	THE TECHNICAL MATERIEL CORP. MAMARONECK, NEW YORK	A
	STOCK SIZE		
	BRASS	END PLATE, STRAP, LARGE (TER-5000)	
	MATERIAL		
A	PM-433-3 ADDED	$\frac{1}{8}/59$ # J.C.B. <i>[Signature]</i> 6.6/67	
ISSUE	ITEM	CHANGED FROM	DATE
TOLERANCES		SCALE: #	
DEC. DIM. \pm		MAXIMUM ALLOWABLE TOLERANCES HAVE BEEN DETERMINED AND ANY DEVIATIONS WILL BE CAUSE FOR REJECTION.	
FRAC. DIM. $\pm \frac{1}{64}$		REMOVE ALL BURRS AND SHARP EDGES	
ANGULAR DIM. \pm			
TYPE & TEMPER	HEAT TREAT. SPEC.	DRAWN	CHECKED
FINISH & SPEC. NO.	ELEC. DES. APP.	MECH. DES. APP.	
			PM-433 A