

IF IT IS FOUND DESIRABLE TO CHANGE ANY TOLERANCE OR OTHER DETAIL SPECIFIED ON THIS DRAWING NOTIFY THE PURCHASER PROMPTLY.

PM-360

MAXIMUM ALLOWABLE TOLERANCES HAVE BEEN DETERMINED AND DEVIATIONS WILL BE CAUSE FOR REJECTION. REMOVE ALL BURRS AND SHARP EDGES

REQ. PER UNIT

USED ON

MODEL

PROJECT NO.

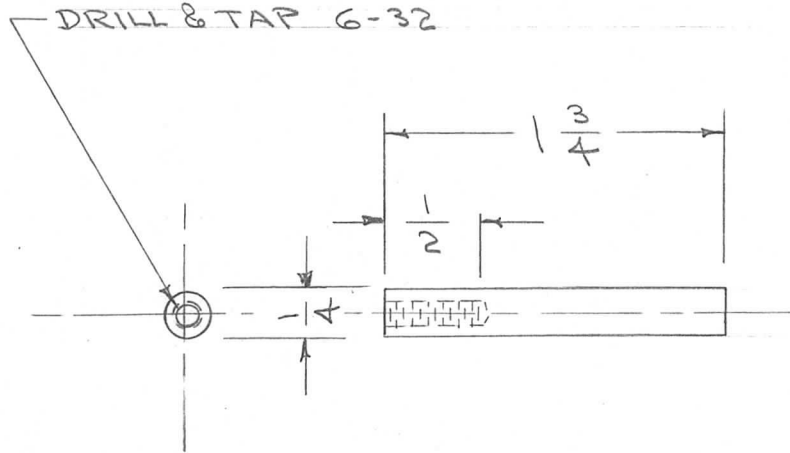
ASS'Y. NO.

DATE

1

RTF

9-26-55



REQ.	ITEM	PART NO.	DESCRIPTION	SYMBOL
	1/4 D. ROD.		THE TECHNICAL MATERIEL CORP.	
	STOCK SIZE		MAMARONECK. NEW YORK	
	ALUMINUM	—H—	SLIDE, ROD	
	MATERIAL	WEIGHT PER PC.	POW/AMPL.	
	11 S T 3		CDD 9/26/55	
	TYPE & TEMPER		Mb -1/11/56	
	H		DRAWN	ELEC. DES. APP. MECH. DES. APP.
	HEAT TREAT. SPEC.		CHECKED	FINAL APPROVAL
	S-101 CAUSTIC DIP			PM-360
	FINISH & SPEC. NO.			

ISSUE	ITEM	CHANGED FROM	DATE	CN. NO.	DRAFTS	CHECKER	ENG. APP.
TOLERANCES			SCALE				
ALL OTHERS	DEC. DIM. ±	DRILL, PUNCH, COMMERCIAL STOCK SIZES AND MANUFACTURERS TOLERANCES ARE NOT INCLUDED.					
	FRAC. DIM. ±1/64						
	ANGULAR DIM. ±						