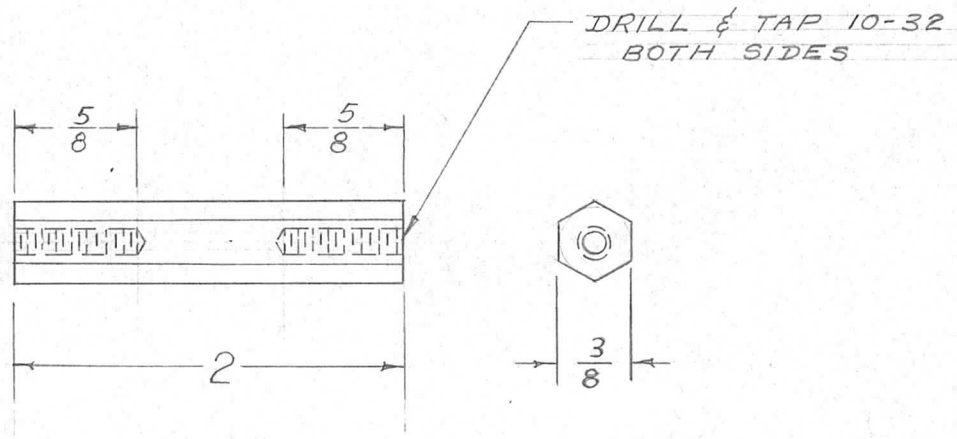


IF IT IS FOUND DESIRABLE TO CHANGE ANY TOLERANCE OR OTHER DETAIL SPECIFIED ON THIS DRAWING NOTIFY THE PURCHASER PROMPTLY.

PM-356

MAXIMUM ALLOWABLE TOLERANCES HAVE BEEN DETERMINED AND DEVIATIONS WILL BE CAUSE FOR REJECTION. REMOVE ALL BURRS AND SHARP EDGES

| REQ. PER UNIT | USED ON | | | |
|---------------|---------|-------------|------------|----------|
| | MODEL | PROJECT NO. | ASS'Y. NO. | DATE |
| 6 | RTP | | | 8-16-55 |
| 1 | VOX | | | 5-19-58 |
| 6 | RTP-2 | | | 10-21-58 |



| REQ. | ITEM | PART NO. | DESCRIPTION | SYMBOL |
|------|---------------|--------------------|------------------------------|-----------------|
| | $\frac{3}{8}$ | HEX. CROSS FLATS | THE TECHNICAL MATERIEL CORP. | |
| | | STOCK SIZE | MAMARONECK, NEW YORK | |
| | ALUMINUM | —#— | SOCKET MOUNTING | |
| | | MATERIAL | GPT-750 PLATE SPACERS | |
| | | WEIGHT PER PC. | | |
| | | 11S - T3 | | |
| | | TYPE & TEMPER | AB 8-16-55 | OK 10/27/55 |
| | | | DRAWN | ELEC. DES. APP. |
| | | | A.J.J. | |
| | | HEAT TREAT. SPEC. | CHECKED | FINAL APPROVAL |
| | | S-101 CAUSTIC DIP | PM-356 | |
| | | FINISH & SPEC. NO. | | |

| ISSUE | ITEM | CHANGED FROM | DATE | CN. NO. | DRAFTS | CHECKER | ENG. APP. |
|------------|-----------------------|---|------|---------|--------|---------|-----------|
| TOLERANCES | | SCALE | | | | | |
| ALL OTHERS | DEC. DIM. \pm | DRILL, PUNCH, COMMERCIAL STOCK SIZES AND MANUFACTURERS TOLERANCES ARE NOT INCLUDED. | | | | | |
| | FRAC. DIM. \pm 1/64 | | | | | | |
| | ANGULAR DIM. \pm | | | | | | |