

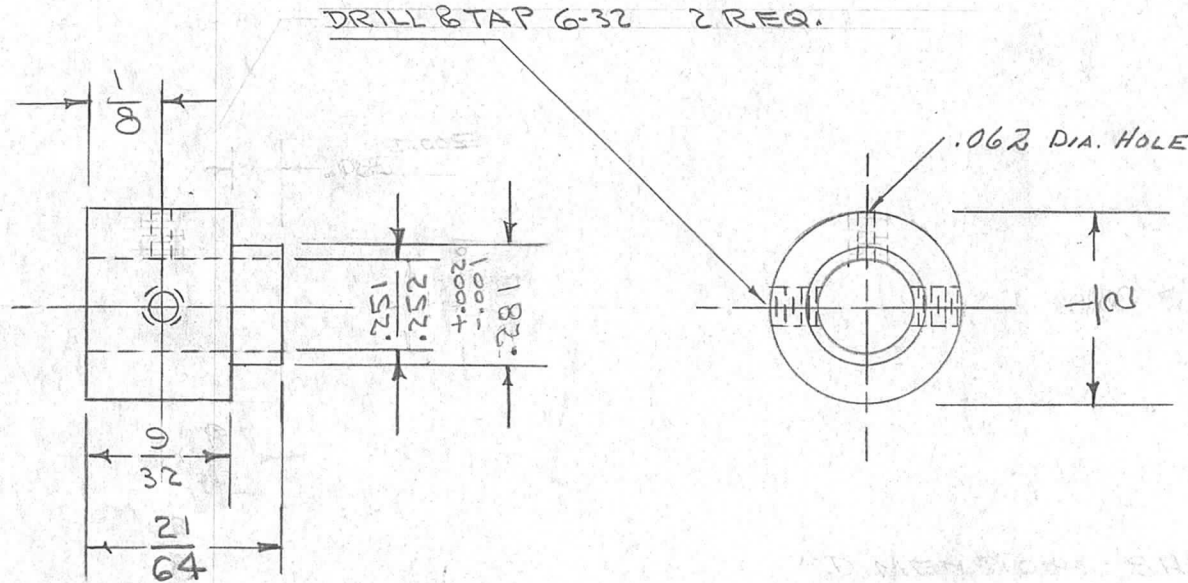
IF IT IS FOUND DESIRABLE TO CHANGE ANY TOLERANCE OR OTHER DETAIL SPECIFIED ON THIS DRAWING NOTIFY THE PURCHASER PROMPTLY.

PM-327

G

MAXIMUM ALLOWABLE TOLERANCES HAVE BEEN DETERMINED AND DEVIATIONS WILL BE CAUSE FOR REJECTION. REMOVE ALL BURRS AND SHARP EDGES

REQ PER UNIT	USED ON			
	MODEL	PROJECT NO.	ASS'Y. NO.	DATE
2	GPR	297	A-1023	12-6-54
1	G5B-1	MARK I	A-1023	5-7-57
1	SBE-1+2		A-1023	
1	RTF-2	POW/AMP		12-9-58
1	SBE-3	AP-100	A-1023	11-30-59



REQ.	ITEM	PART NO.	DESCRIPTION	SYMBOL									
G	1	ADDED .062 HOLE	1/2 D. ROD.										
F	1	21/64 was 3/8 1/2 was 5/8	THE TECHNICAL MATERIEL CORP.										
E	1	STOCK SIZE WAS 1/2 D	MAMARONECK. NEW YORK										
D	1	NOTE REMOVED	HUB, FREQ. DIAL										
C	1	HOLES WERE 90° APART											
B	1	9/32 & 1/8 ADDED											
A	2	.281 WAS .312											
A	1	.085 WAS .125											
ISSUE	ITEM	CHANGED FROM	DATE	CN. NO.	DRAFTS	CHECKER	ENG. APP.	TYPE & TEMPER	HEAT TREAT. SPEC.	FINISH & SPEC. NO.	C.D.D. 12-6-54	###	W02
TOLERANCES		SCALE		DRILL, PUNCH, COMMERCIAL STOCK SIZES AND MANUFACTURERS TOLERANCES ARE NOT INCLUDED.		DRAWN		ELEC. DES. APP.		MECH. DES. APP.		G.T.O	
ALL OTHERS	DEC. DIM. ± .005 FRAC. DIM. ± 1/64 ANGULAR DIM. ±						CHECKED		FINAL APPROVAL		PM-327		G