

IF IT IS FOUND DESIRABLE TO CHANGE ANY TOLERANCE OR OTHER DETAIL SPECIFIED ON THIS DRAWING NOTIFY THE PURCHASER PROMPTLY.

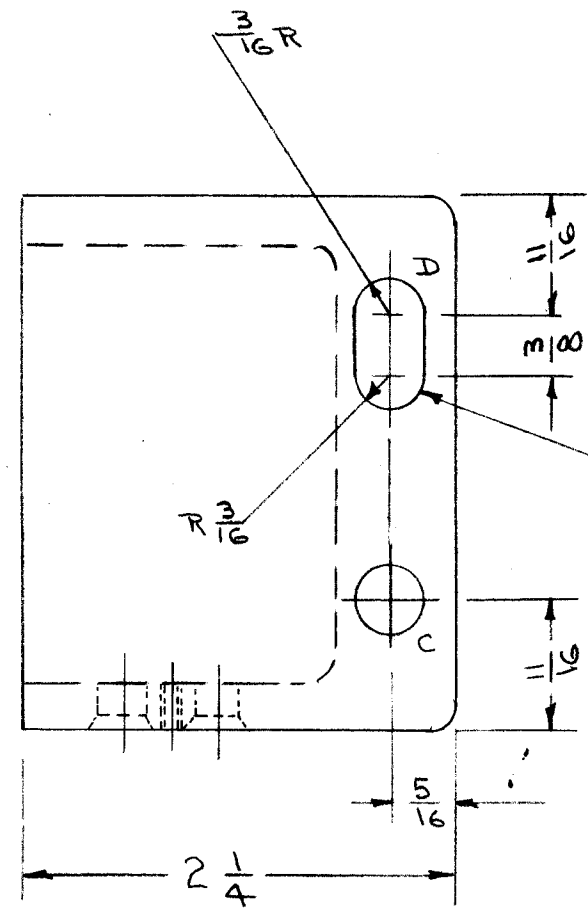
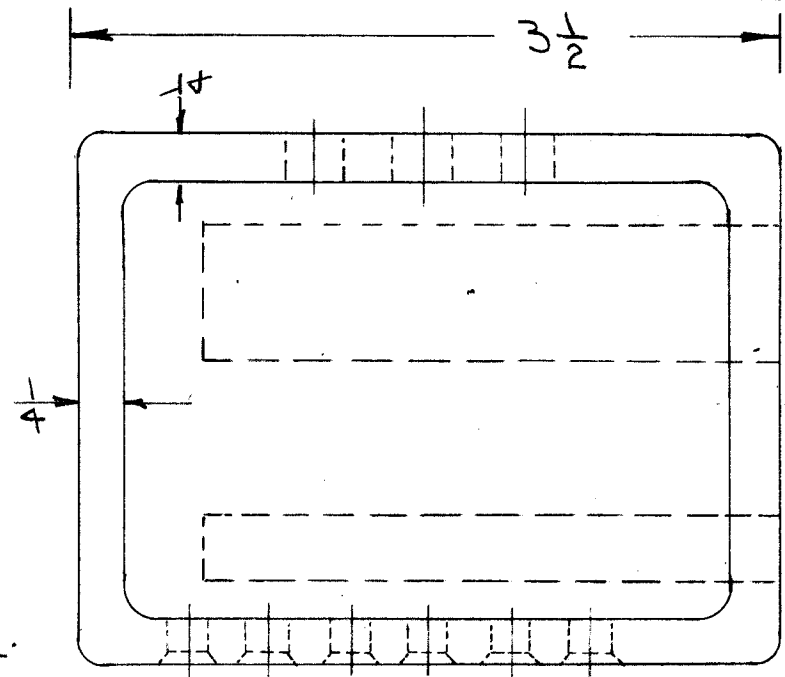
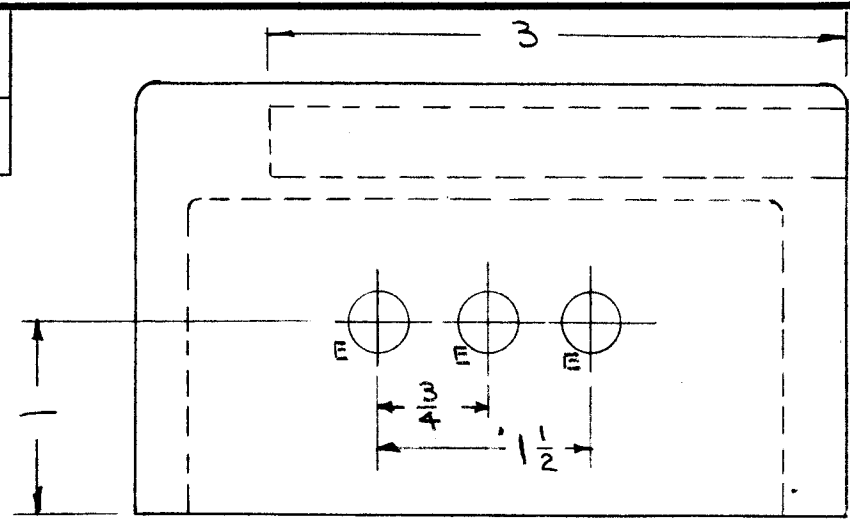
MAXIMUM ALLOWABLE TOLERANCES HAVE BEEN DETERMINED AND DEVIATIONS WILL BE CAUSE FOR REJECTION. REMOVE ALL BURRS AND SHARP EDGES

PM-295

NOTICE TO PERSONS RECEIVING THIS DRAWING

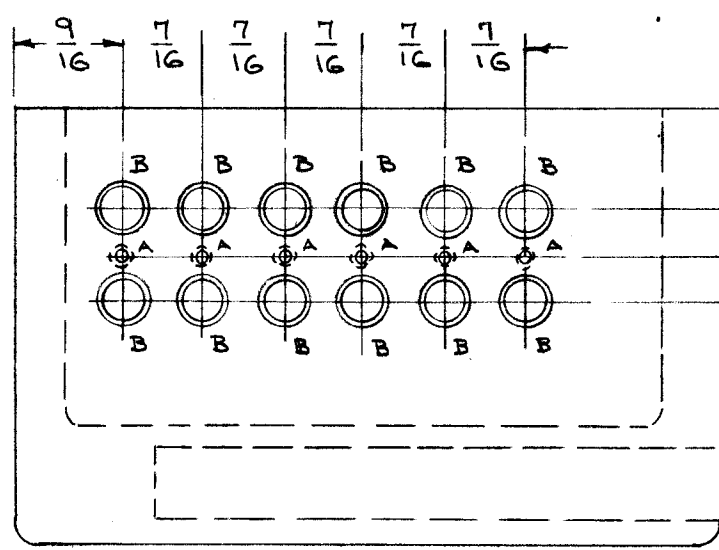
THE TECHNICAL MATERIEL CORPORATION claims proprietary right in the material disclosed hereon. This drawing is issued in confidence for engineering information only and may not be reproduced or used to manufacture anything shown hereon without permission from THE TECHNICAL MATERIEL CORPORATION to the user. This drawing is loaned for mutual assistance and is subject to recall at any time.

Property of:
THE TECHNICAL MATERIEL CORPORATION
MAMARONECK, NEW YORK



3/8 x 3/4, 3" DEEP

- A - 4-40 TAP. 6 REQ
 - B - H DRILL (.266) THEN C'SINK AT 82° x 1/32 DEEP. 12 REQ.
 - C - 3/8 (.375) D. 3" DEEP 1 REQ.
 - D - SLOT 3/8 x 3/4 3" DEEP 1 REQ.
 - E - 5/16 (.312) D. 3 REQ.
- (CHAMFER "E" HOLES 1/32)



REF: CASTING DWG. CS-107

REQ.	ITEM	PART NO.	DESCRIPTION	SYMBOL
			THE TECHNICAL MATERIEL CORP. MAMARONECK, NEW YORK	
STOCK SIZE			XTAL OVEN, MACHINING	
MATERIAL			MODEL XFK-M1	
TYPE & TEMPER			JAN 7-20-54	A.J.J. WDE
HEAT TREAT. SPEC.			o.B.B. 7-20-54	A.J.J. WDE
FINISH & SPEC. NO.			CHECKED FINAL APPROVAL	
			PM-295	

ISSUE	ITEM	CHANGED FROM	DATE	CN. NO.	DRAFTS	CHECKER	ENG. APP.
TOLERANCES		SCALE:					
ALL OTHERS		DRILL, PUNCH, COMMERCIAL STOCK SIZES AND MANUFACTURERS TOLERANCES ARE NOT INCLUDED.					

1	XFK-M1	309		7-20-54
MODEL	PROJECT NO.	ASS'Y. NO.	DATE	
USED ON				