

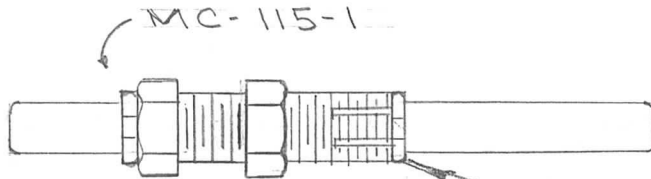
IF IT IS FOUND DESIRABLE TO CHANGE ANY TOLERANCE OR OTHER DETAIL SPECIFIED ON THIS DRAWING NOTIFY THE PURCHASER PROMPTLY.

PM-250 A

MAXIMUM ALLOWABLE TOLERANCES HAVE BEEN DETERMINED AND DEVIATIONS WILL BE CAUSE FOR REJECTION. REMOVE ALL BURRS AND SHARP EDGES

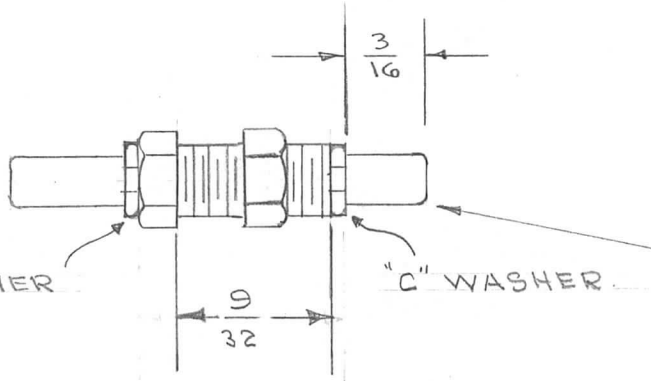
USED ON

MODEL	PROJECT NO.	ASS'Y. NO.	DATE
RSC-1	170	A-560	10-12-53



MODIFICATION PROCEDURE

1. USING A CUTOFF TOOL .038 WIDE, CUT BEARING TO $9/32$ LENGTH AS SHOWN. IN SAME OPERATION, REGROOVE SHAFT $1/32$ DEEP FOR "C" WASHER.
2. REMOVE "C" WASHER AND REPLACE IN NEW GROOVE.
3. CUT SHAFT TO $3/16$ AS SHOWN.



SLIGHT CHAMFER.

USE MC-115-1

REQ.	ITEM	PART NO.	DESCRIPTION	SYMBOL
			THE TECHNICAL MATERIEL CORP.	
			MAMARONECK. NEW YORK	
			MODIFICATION,	
			PANEL BEARING	
			C.D.D. 10-12-53	
			DRAWN	ELEC. DES. APP. MECH. DES. APP.
			CHECKED	FINAL APPROVAL
				PM-250 A

ISSUE	ITEM	CHANGED FROM	DATE	CN. NO.	DRAFTS	CHECKER	ENG. APP.
A	1	CUTTING LENGTH CHANGED	10/27/53	1	16	JAL	WDE

ALL OTHERS	DEC. DIM. \pm FRAC. DIM. \pm ANGULAR DIM. \pm	SCALE $\frac{1}{16}$	DRILL, PUNCH, COMMERCIAL STOCK SIZES AND MANUFACTURERS TOLERANCES ARE NOT INCLUDED.
------------	---	----------------------	---