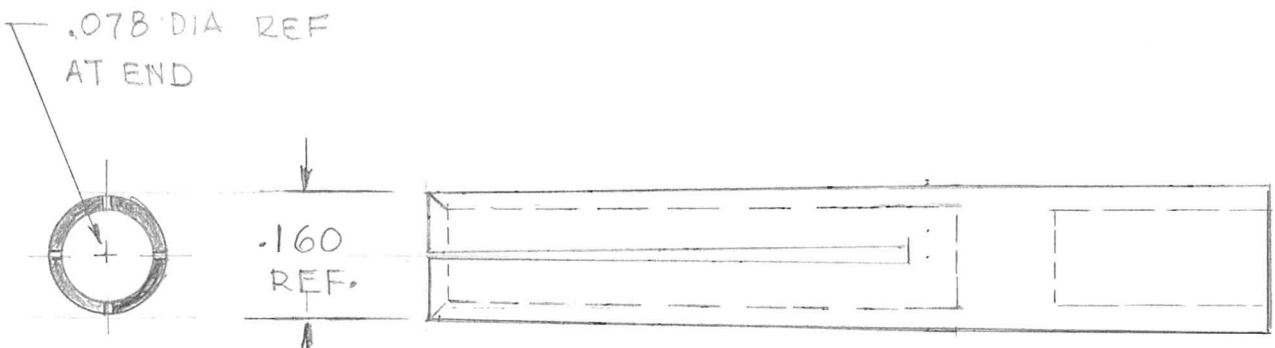
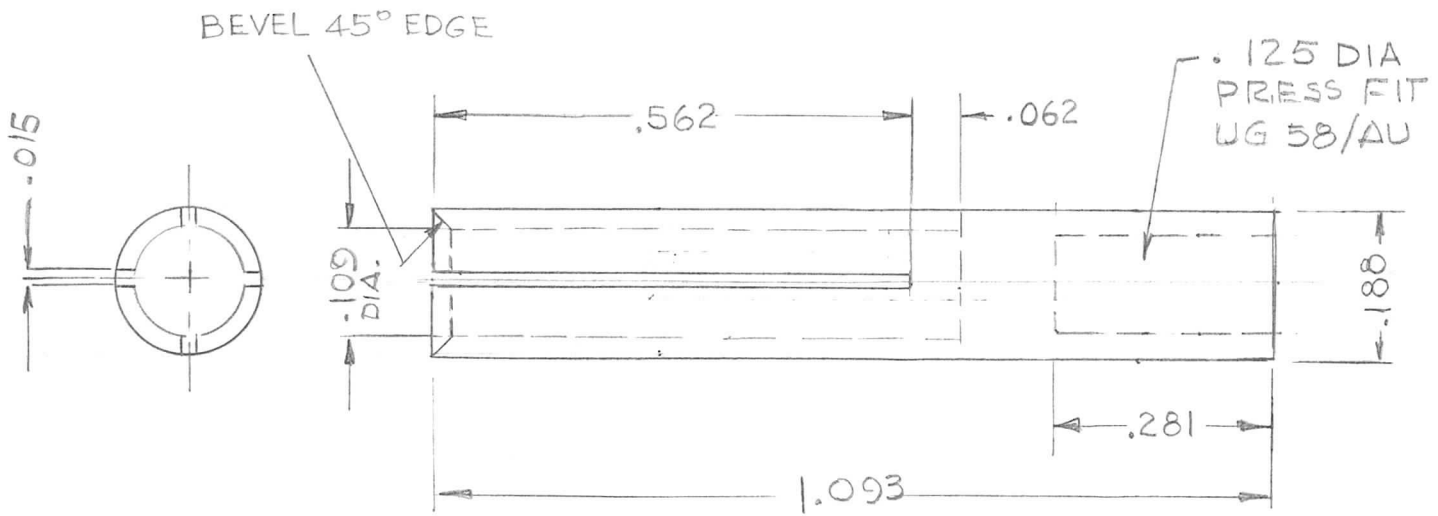


APPLICATION				REVISIONS					
QTY	MODEL USED ON	ASS'Y NO.	LTR	DESCRIPTION	DATE	E.M.N.NO	DRAFT	CHKD	APPD

Ø ORIGINAL RELEASE FOR PROD



CONTACT PIN AFTER FORMING END



UNLESS OTHERWISE SPECIFIED DIMENSIONS ARE IN INCHES AND INCLUDE CHEMICALLY APPLIED OR PLATED FINISHES

DECIMALS	FRACTIONS	TOLS.	ANGLES
.X ± .05	1/64		0° - 30'
.XX ± .01			
.XXX ± .005			

REQ'D	ITEM	PART NUMBER	DESCRIPTION	SYM.
LIST OF MATERIAL				
FINAL APPROVAL <i>G.B.</i>			DATE 12/10/92	<b>THE TECHNICAL MATERIEL CORP.</b> MAMARONECK, NEW YORK  <b>CONTROL PIN ADAPTOR</b> <b>JJ 282</b>
MECH. DES.			DATE	
ELECT. DES.			DATE	
CHECKED			DATE	
DRAWN <i>G.D.L.</i>			DATE 6/10/92	

MATERIAL 3/16 DIA BERYLIUM COPPER  
FINISH SILVER PLATE & GOLD FLASH

**NOTICE TO PERSONS RECEIVING THIS DRAWING**  
 THE TECHNICAL MATERIEL CORPORATION claims proprietary right in the material disclosed hereon. This drawing is issued in confidence for engineering information only and may not be reproduced or used to manufacture anything shown hereon without permission from THE TECHNICAL MATERIEL CORPORATION to the user. This drawing is loaned for mutual assistance and is subject to recall at any time.

SIZE <b>A</b>	CODE IDENT. NO. <b>82679</b>	DWG NO. <b>PM 1611</b>	ISSUE
SCALE <b>4:1</b>		SHEET	OF